

The KOS

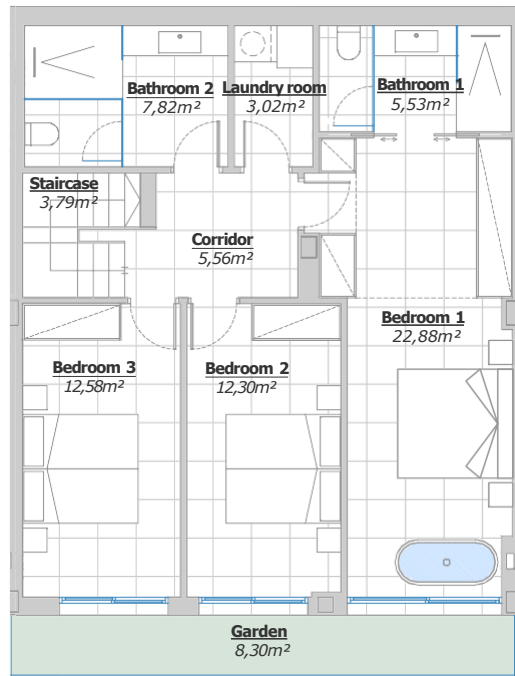
SKY TOP VILLA 3.4

USEABLE SURFACE AREA

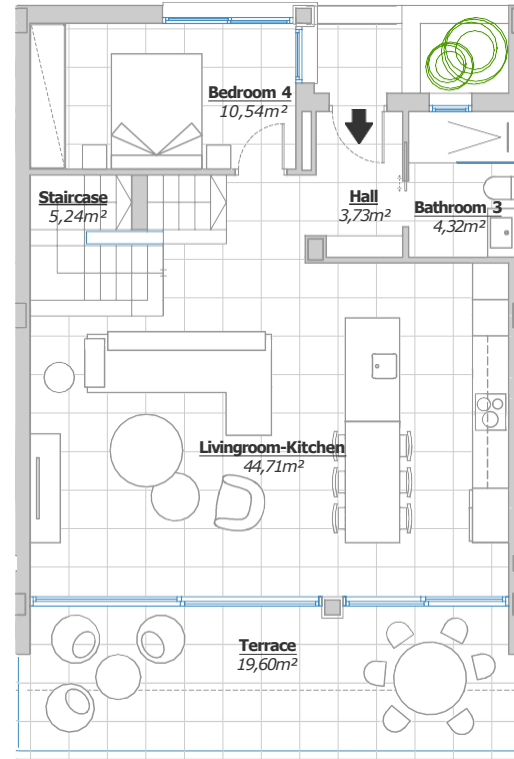
Indoors	143,13 m ²
Terraces	83,22 m ²
Garden	8,30 m ²

TOTAL NET FLOOR AREA: 157,44 m²
 ACCORDING TO ROYAL DECREE 218/2005

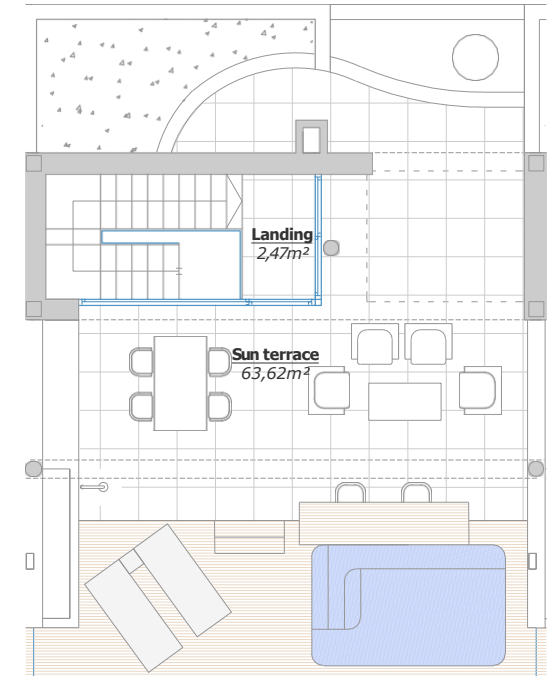
TOTAL BUILT ENCLOSED AREA: 172,06 m²



GROUND FLOOR

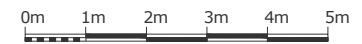
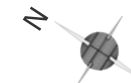
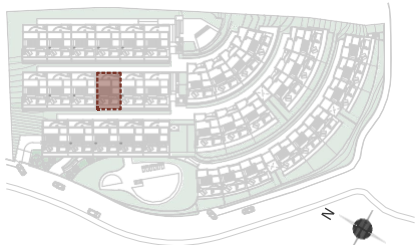


FIRST FLOOR



SUN TERRACE FLOOR

SITE PLAN



Graphic scale

(* This plan may be modified depending on progress of the development. The furniture shown is purely for decorative purposes. The project manager reserves the right to make the necessary changes for any possible functional, aesthetic and legal reasons, without this negatively affecting the quality of the construction. Illustrative dimensions.