

The KOS

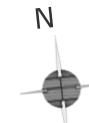
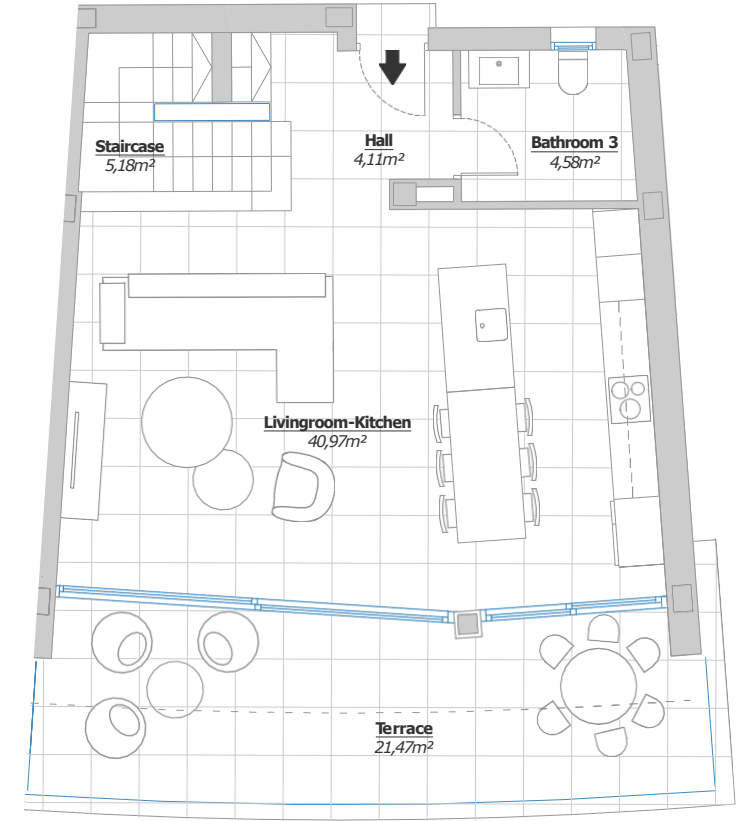
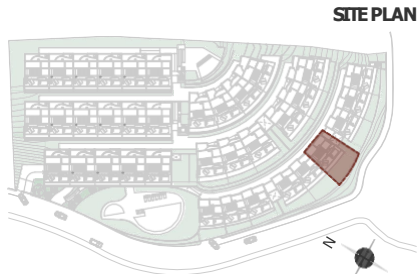
SKY TOP VILLA 1.6

USEABLE SURFACE AREA

Indoors	138,79 m ²
Terraces	84,79 m ²
Garden	72,74 m ²

TOTAL NET FLOOR AREA: 152,67 m²
 ACCORDING TO ROYAL DECREE 218/2005

TOTAL BUILT ENCLOSED AREA: 174,92 m²



Graphic scale

(* This plan may be modified depending on progress of the development. The furniture shown is purely for decorative purposes. The project manager reserves the right to make the necessary changes for any possible functional, aesthetic and legal reasons, without this negatively affecting the quality of the construction. Illustrative dimensions.

The KOS

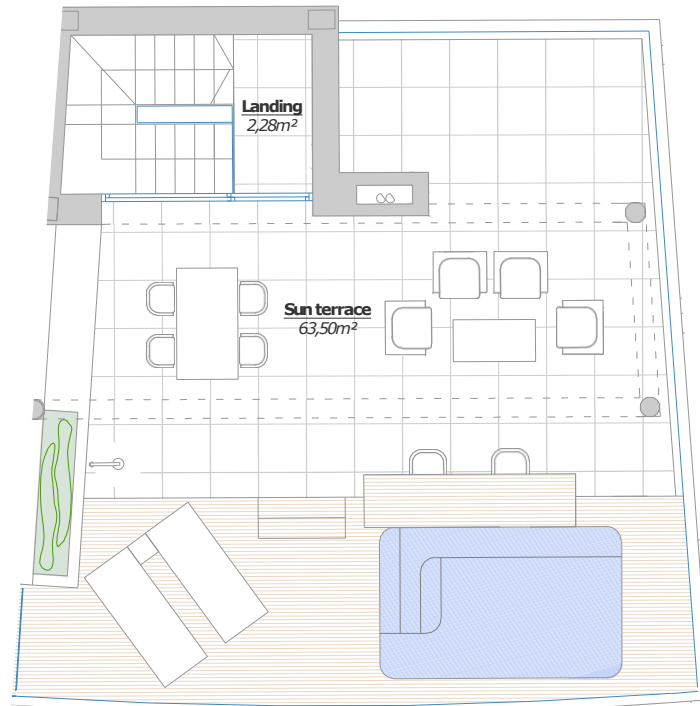
SKY TOP VILLA 1.6

USEABLE SURFACE AREA

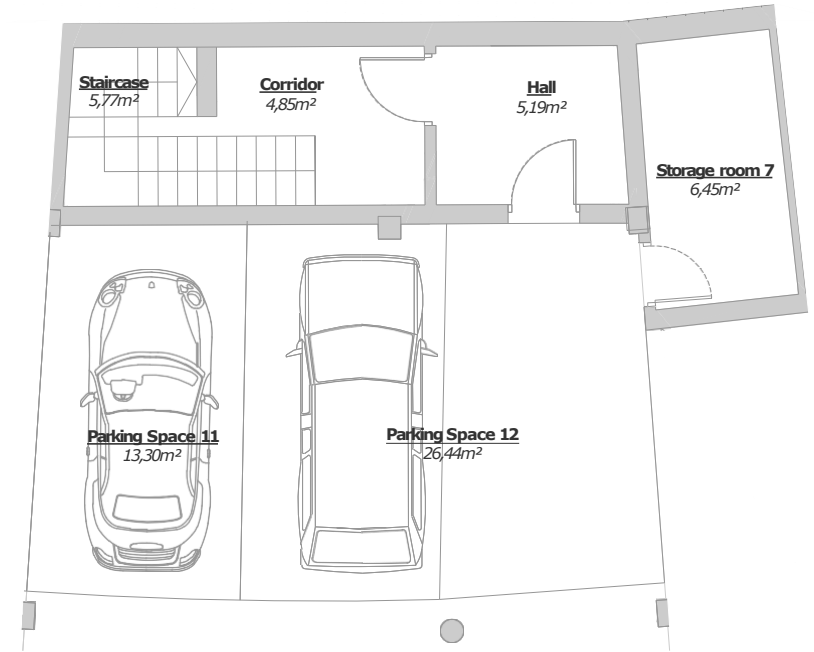
Indoors	138,79 m ²
Terraces	84,79 m ²
Garden	72,74 m ²

TOTAL NET FLOOR AREA: 152,67 m²
 ACCORDING TO ROYAL DECREE 218/2005

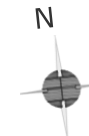
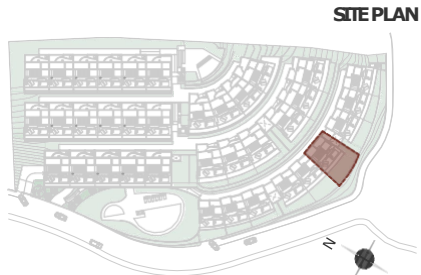
TOTAL BUILT ENCLOSED AREA: 174,92 m²



SUN TERRACE FLOOR



BASEMENT FLOOR



Graphic scale

(*) This plan may be modified depending on progress of the development. The furniture shown is purely for decorative purposes. The project manager reserves the right to make the necessary changes for any possible functional, aesthetic and legal reasons, without this negatively affecting the quality of the construction. Illustrative dimensions.