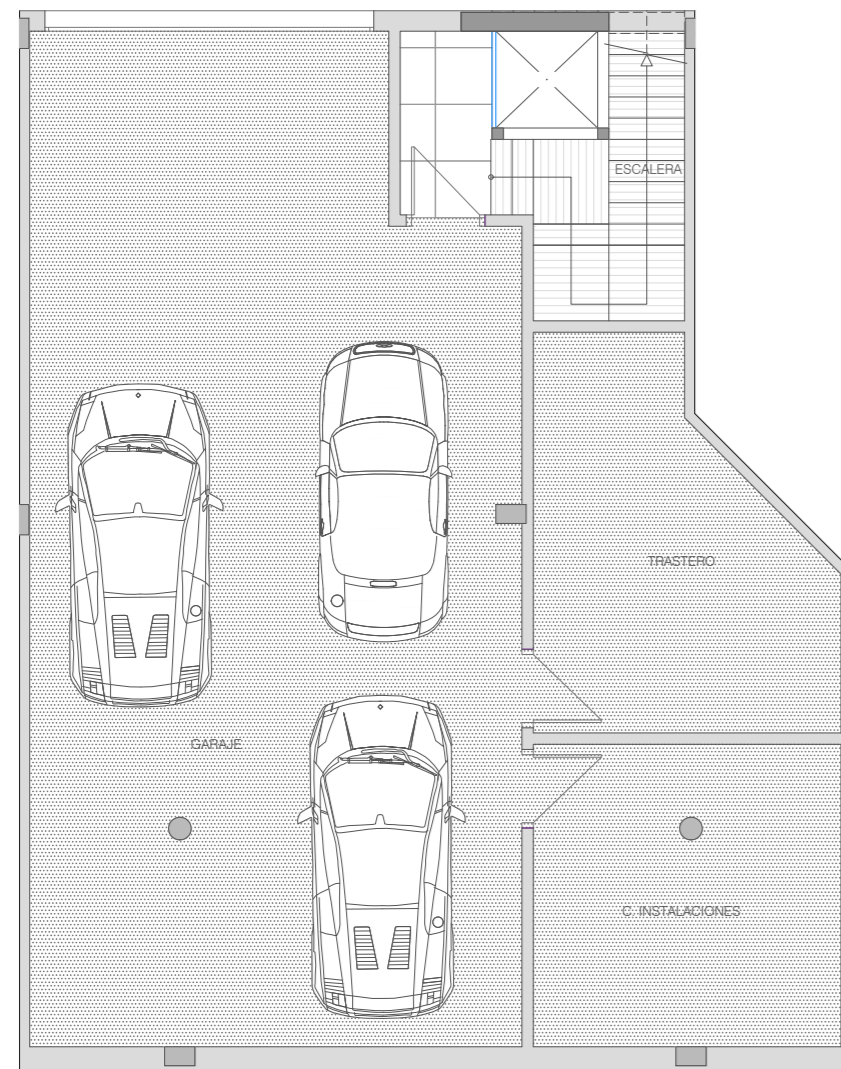


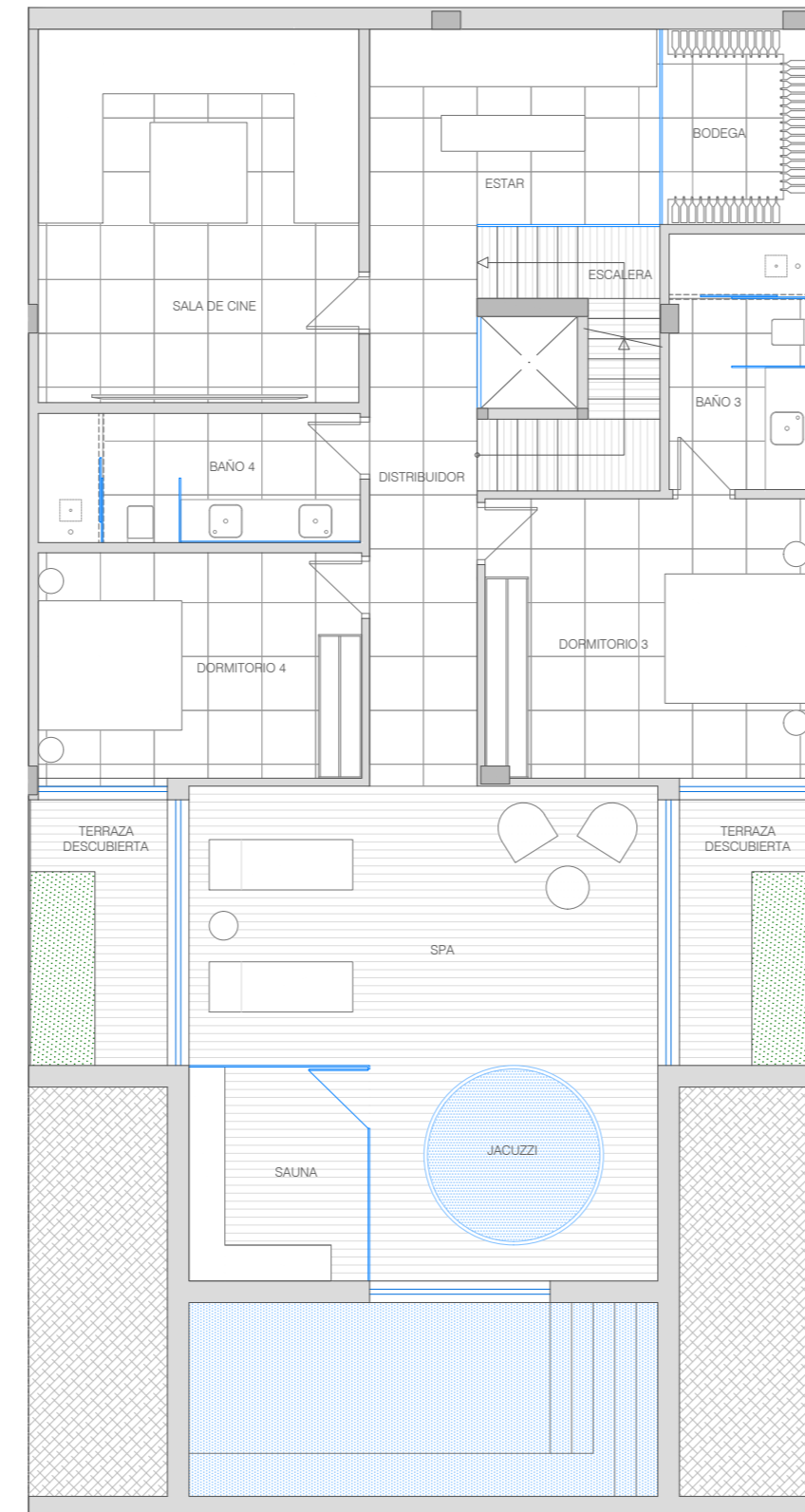


Villa B

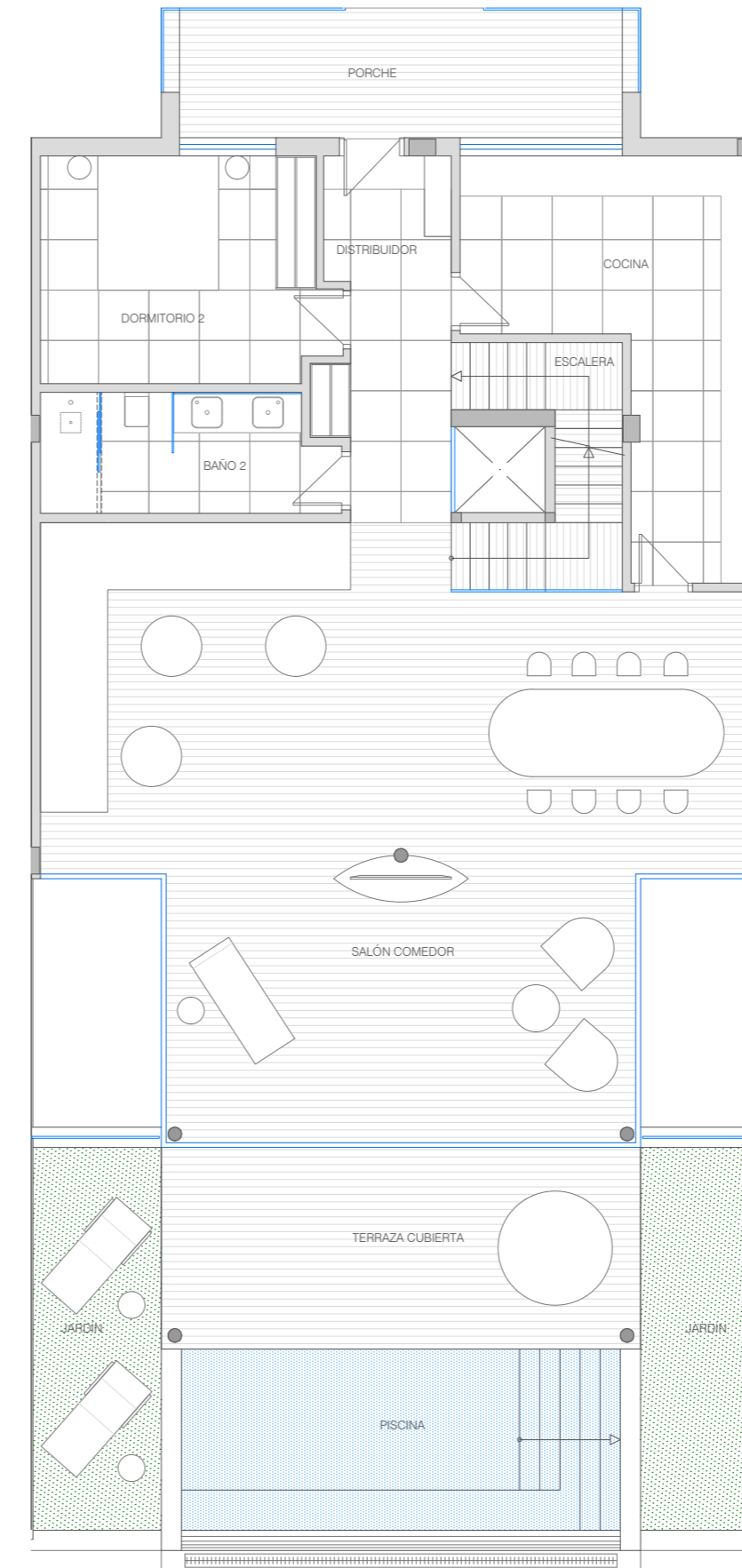
Garaje



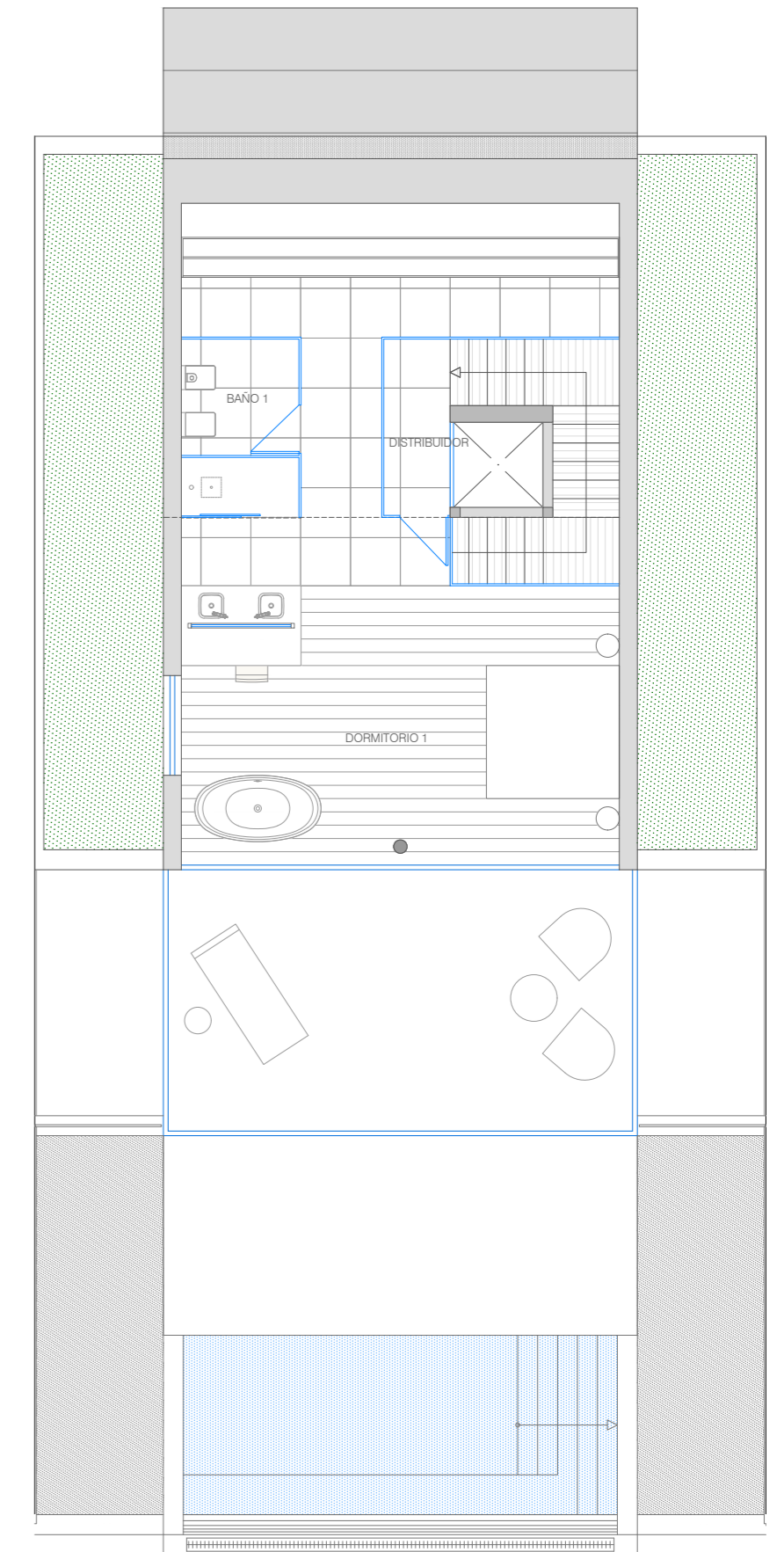
Nivel 0



Nivel 1



Nivel 2



SUPERFICIES Villa B

SUPERFICIE DE VIVIENDA	
NIVEL 0	171,24 m ²
NIVEL 1	149,85 m ²
NIVEL 2	76,26 m ²
SUPERFICIE DE TERRAZA	75,01 m ²
SUPERFICIE DE GARAJE	103,31 m ²
SUPERFICIE DE PISCINA	19,59 m ²
SUPERFICIE DE TRASTERO / INST	37,52 m ²
SUPERF. CONST. TOTAL	632,78 m ²

