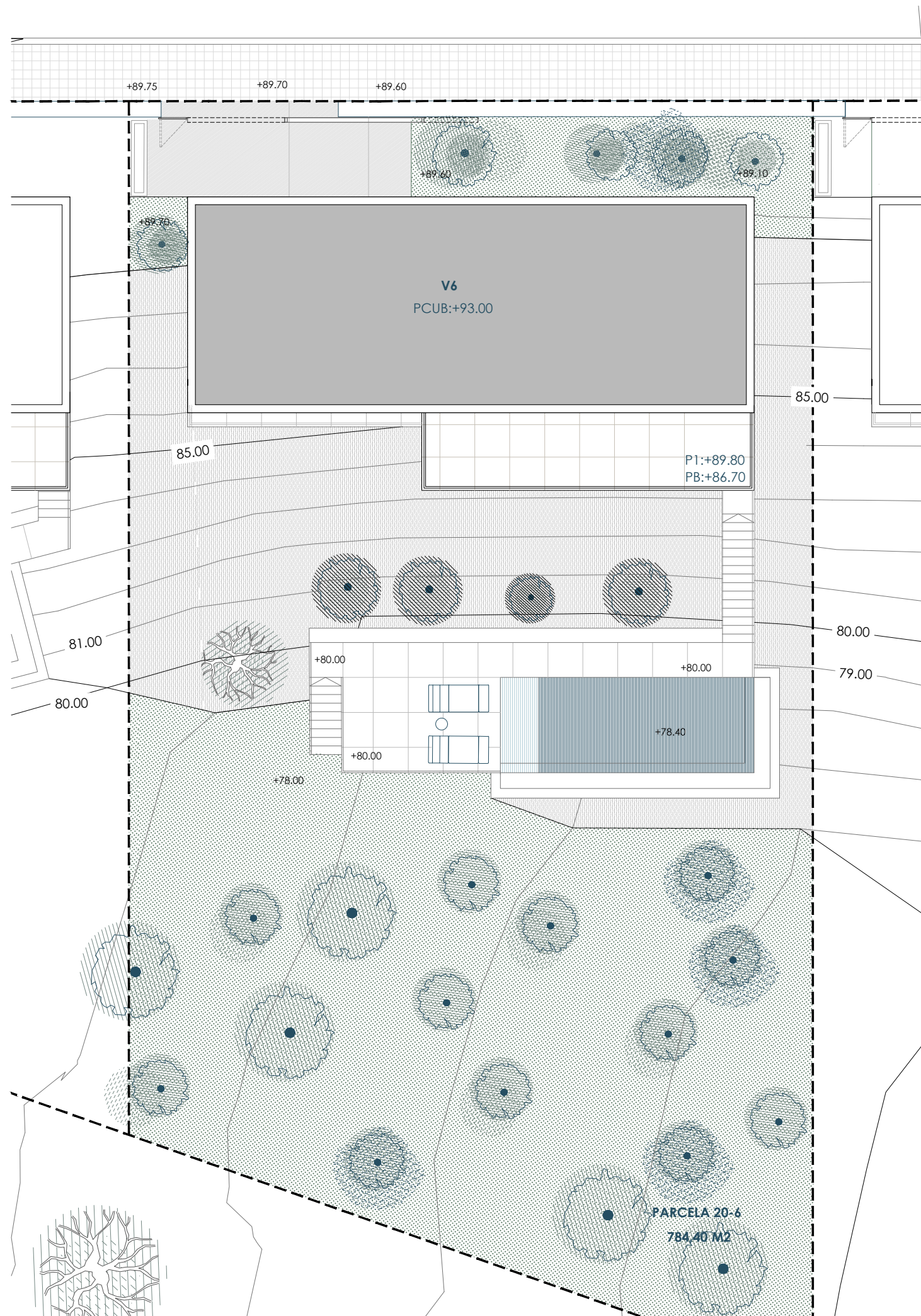


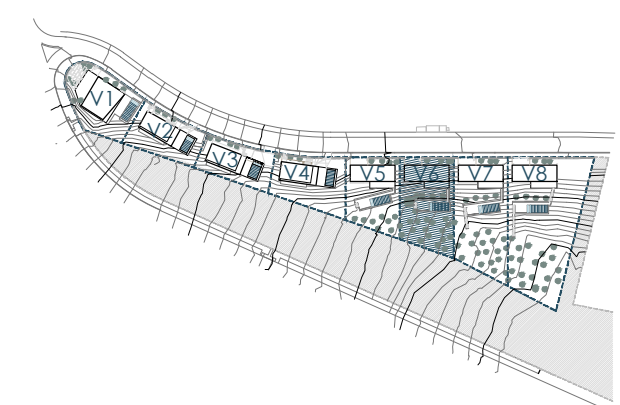
# HIGUERÓN WEST

LIVE  
WORK  
PLAY

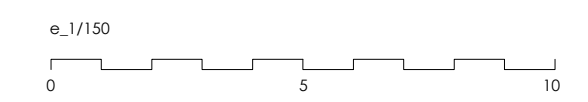
by **Urbania**



|                       |                      |
|-----------------------|----------------------|
| CAMINO EXTERIOR       | 54,10 m <sup>2</sup> |
| JARDÍN                | 38,10 m <sup>2</sup> |
| TALUD NATURAL         | 187 m <sup>2</sup>   |
| (+80.00)              |                      |
| TERRAZA PISCINA       | 15,00 m <sup>2</sup> |
| PISCINA (lámina agua) | 24,00 m <sup>2</sup> |
| JARDÍN                | 320 m <sup>2</sup>   |

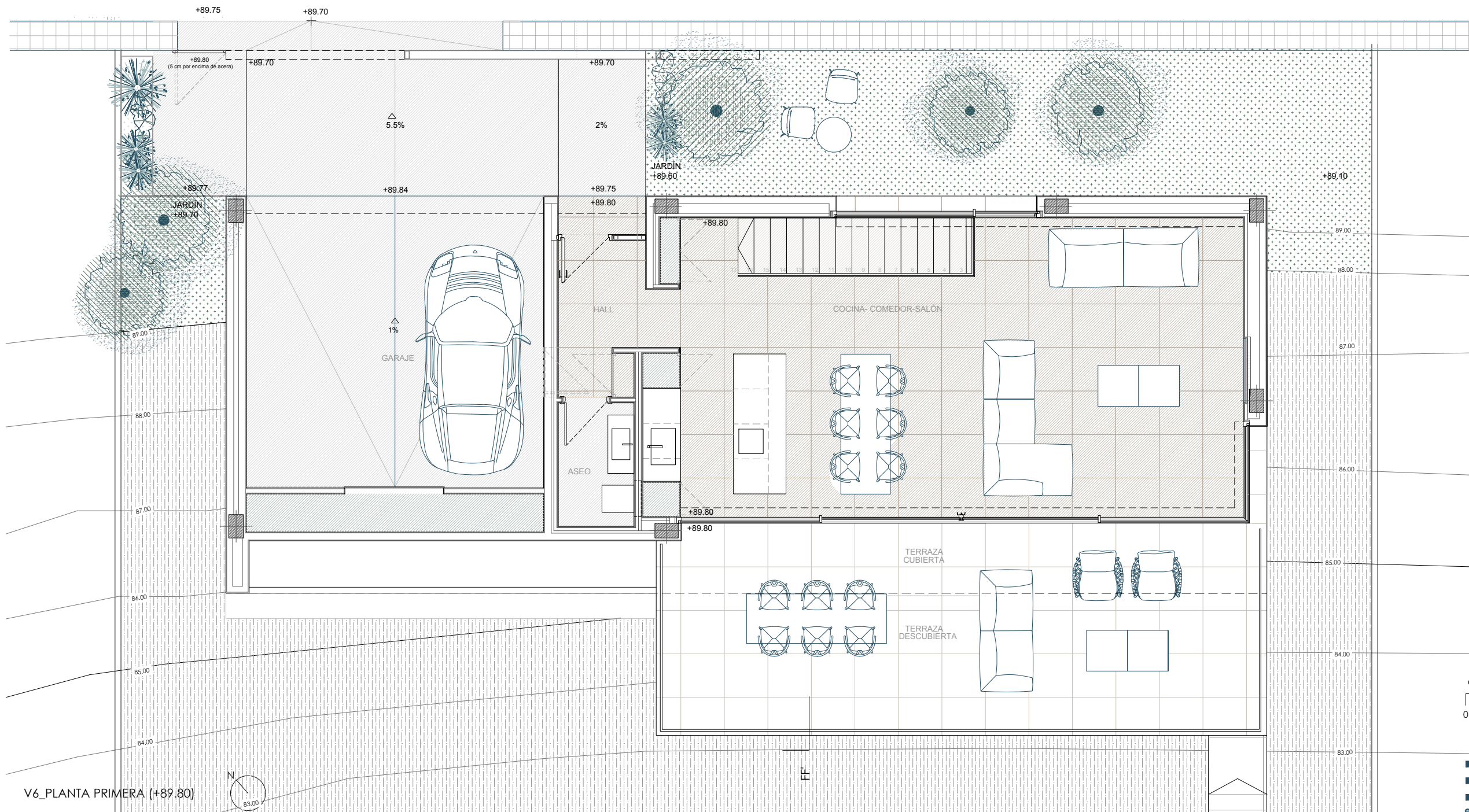


**V6 SUP. PARCELA 784,40 M<sup>2</sup>**



NOTA: La arquitectura y los elementos de diseño podrían sufrir modificaciones debido a razones técnicas o al desarrollo del proyecto  
 DISCLAIMER: Architecture and design elements may suffer modifications due to technical reasons or project development





**V6 SUP. PARCELA 784,40 M2**

PLANTA PRIMERA (+89.80)

**SUPERFICIES ÚTILES**

|                               |                 |
|-------------------------------|-----------------|
| HALL                          | 4.60 m2         |
| ASEO                          | 2.50 m2         |
| COCINA- COMEDOR-SALÓN         | 52.70 m2        |
| ESCALERA                      | 2.00 m2         |
| <b>TOTAL ÚTIL RESIDENCIAL</b> | <b>61.80 m2</b> |

**TOTAL ÚTIL RESIDENCIAL 61.80 m2**

GARAJE 28.60 m2

**TOTAL ÚTIL (interior) 90.40 m2**

PORCHE DE ACCESO 1.00 m2

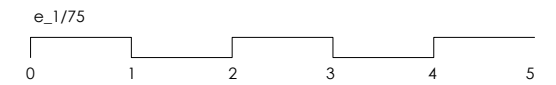
TERRAZA CUBIERTA 8.40 m2

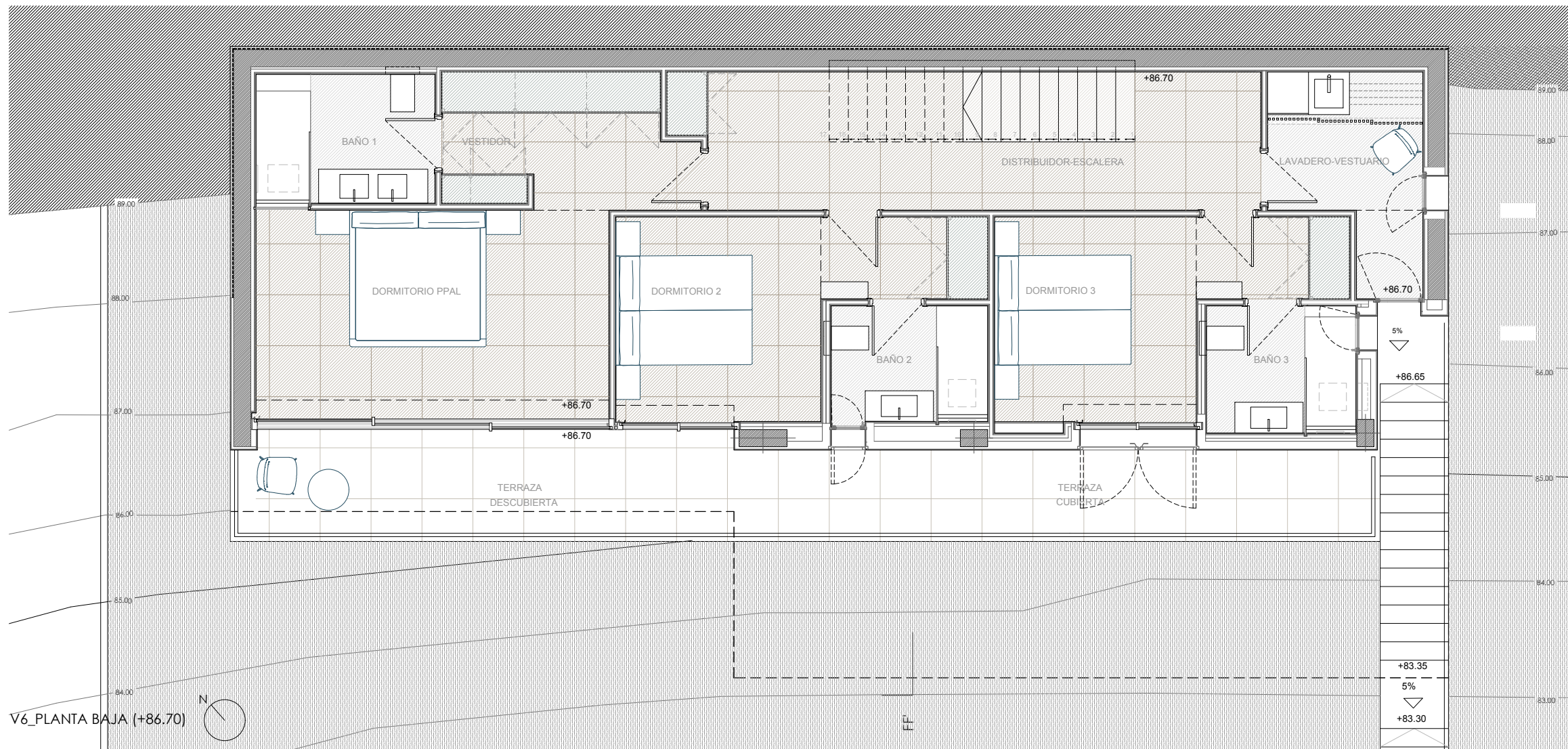
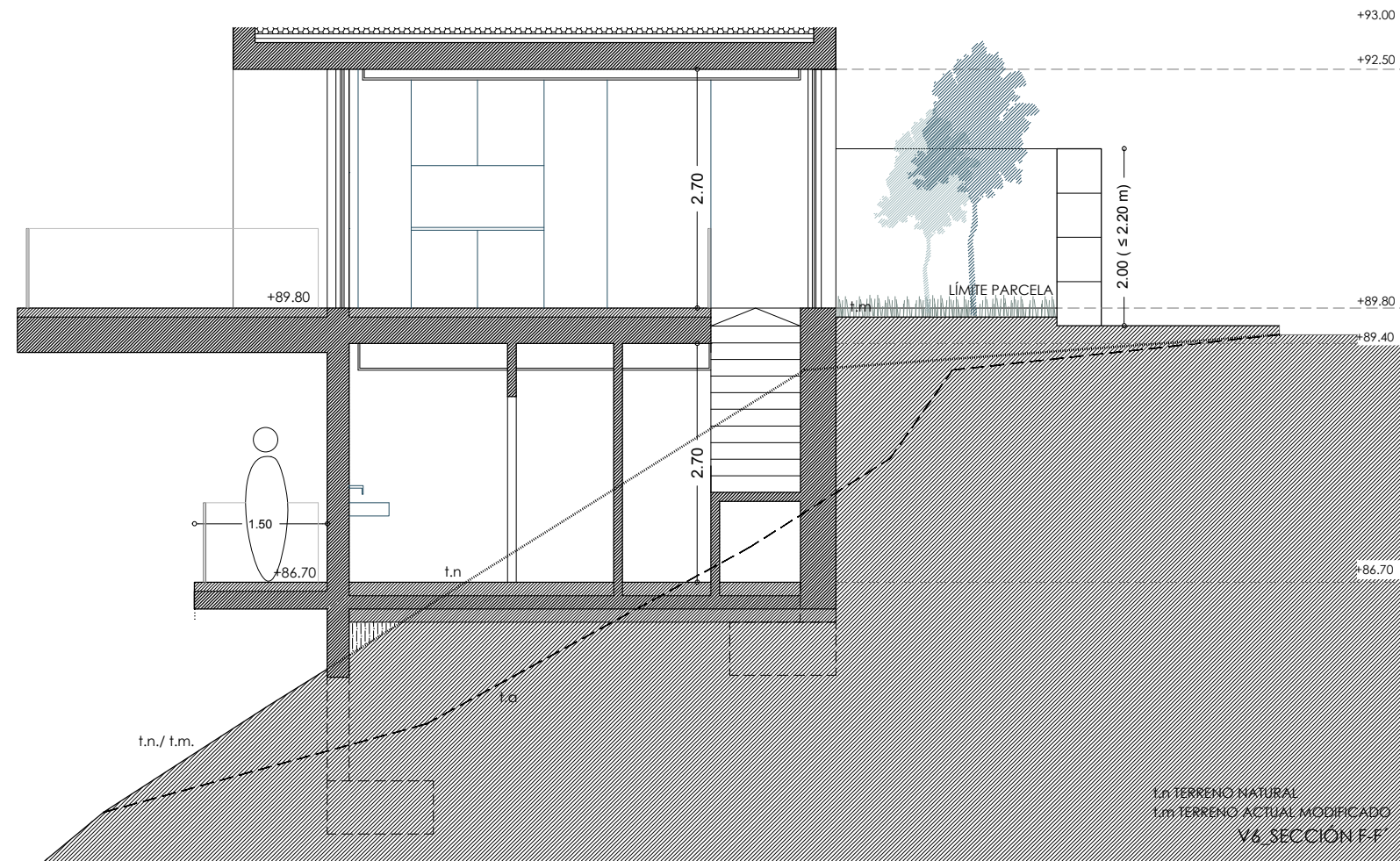
TERRAZA DESCUBIERTA 28.30 m2

**SUPERFICIES CONSTRUIDAS**

|                          |                  |
|--------------------------|------------------|
| SUP CONSTRUIDA P.BAJA    | 101.50 m2        |
| SUP CONSTRUIDA P.PRIMERA | 69.50 m2         |
| SUP CONSTRUIDA GARAJE    | 32.00 m2         |
| <b>CONSTRUIDA TOTAL</b>  | <b>203.00 m2</b> |

**CONSTRUIDA TOTAL 203.00 m2**





## V6 SUP. PARCELA 784,40 M2

PLANTA BAJA (+86.70)

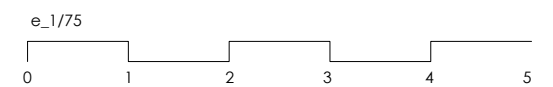
### SUPERFICIES ÚTILES

|                              |                 |
|------------------------------|-----------------|
| DORMITORIO PPAL              | 16.10 m2        |
| BAÑO 1                       | 5.10 m2         |
| VESTIDOR                     | 6.80 m2         |
| DORMITORIO 2                 | 11.80 m2        |
| BAÑO 2                       | 3.90 m2         |
| DORMITORIO 3                 | 11.70 m2        |
| BAÑO 3                       | 3.80 m2         |
| LAVADERO-VESTUARIO           | 6.10 m2         |
| DISTRIBUIDOR-ESCALERA        | 16.50 m2        |
| <b>TOTAL ÚTIL (interior)</b> | <b>81.80 m2</b> |

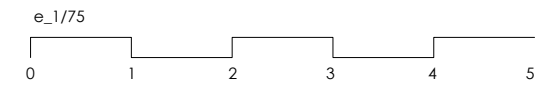
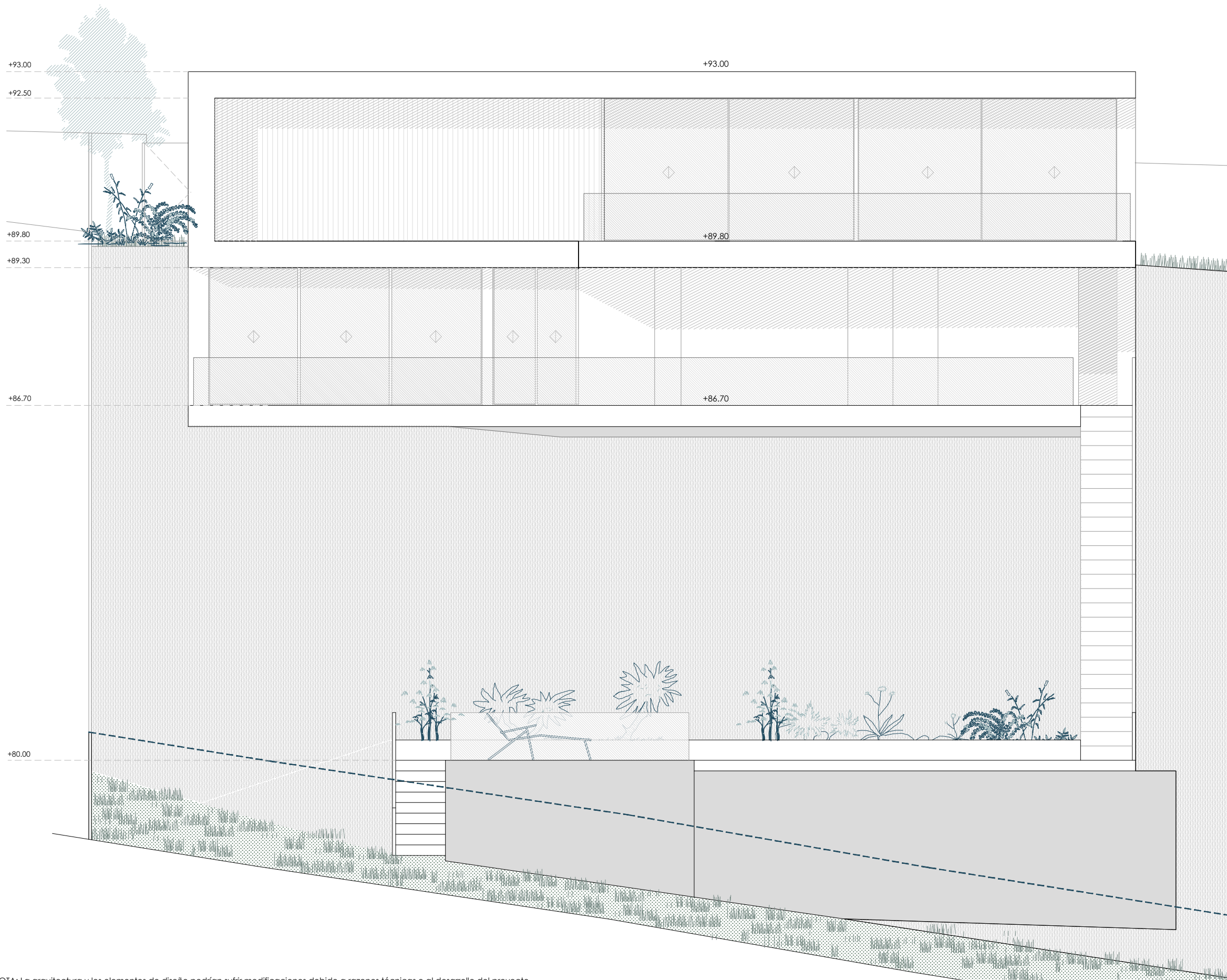
|                     |          |
|---------------------|----------|
| TERRAZA CUBIERTA    | 19.30 m2 |
| TERRAZA DESCUBIERTA | 5.20 m2  |

### SUPERFICIES CONSTRUIDAS

|                          |                  |
|--------------------------|------------------|
| SUP CONSTRUIDA P.BAJA    | 101.50 m2        |
| SUP CONSTRUIDA P.PRIMERA | 69.50 m2         |
| SUP CONSTRUIDA GARAJE    | 32.00 m2         |
| <b>CONSTRUIDA TOTAL</b>  | <b>203.00 m2</b> |







NOTA: La arquitectura y los elementos de diseño podrían sufrir modificaciones debido a razones técnicas o al desarrollo del proyecto  
DISCLAIMER: Architecture and design elements may suffer modifications due to technical reasons or project development