



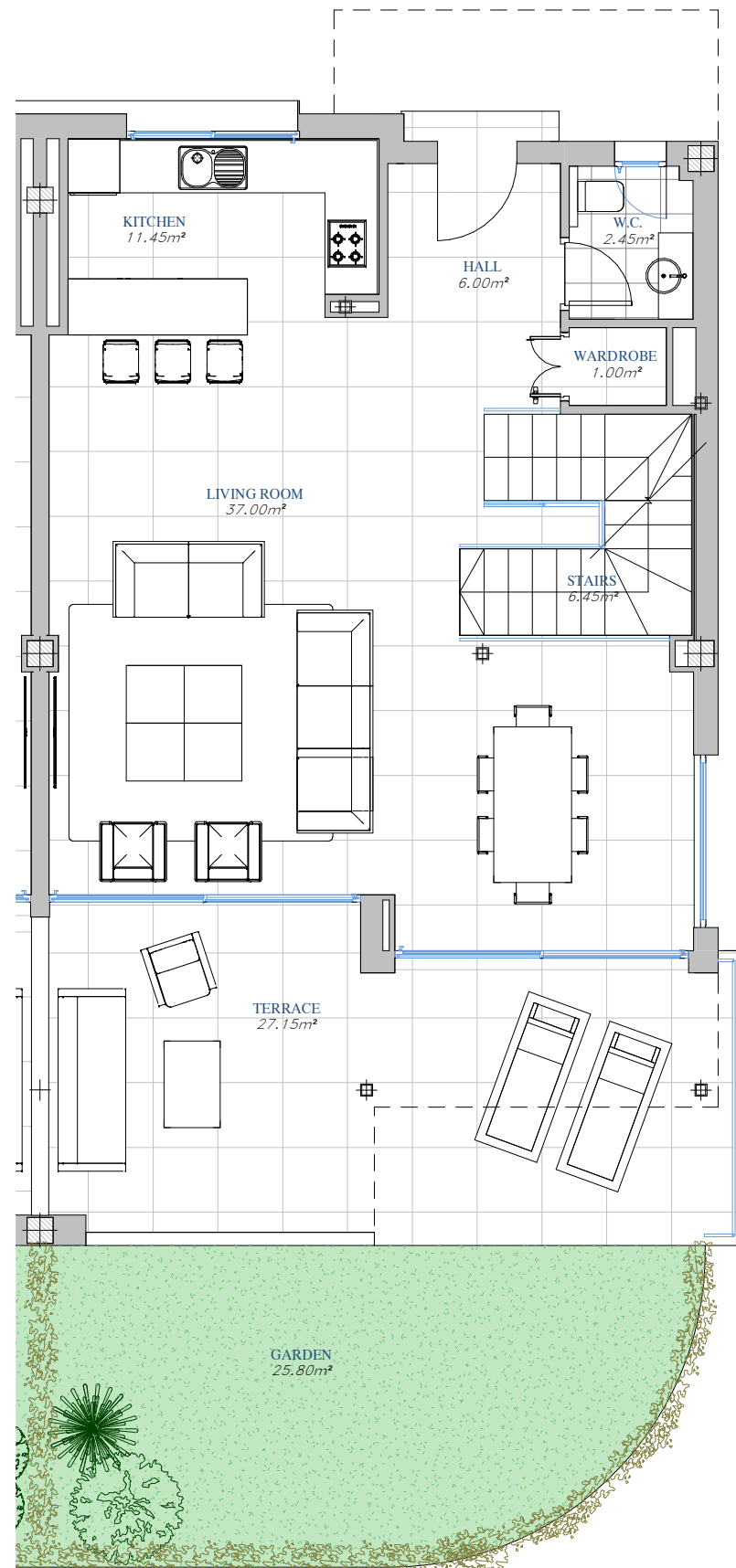
LOMAS DEL HIGUERÓN
by TOP GESTIÓN

BUILDING 4

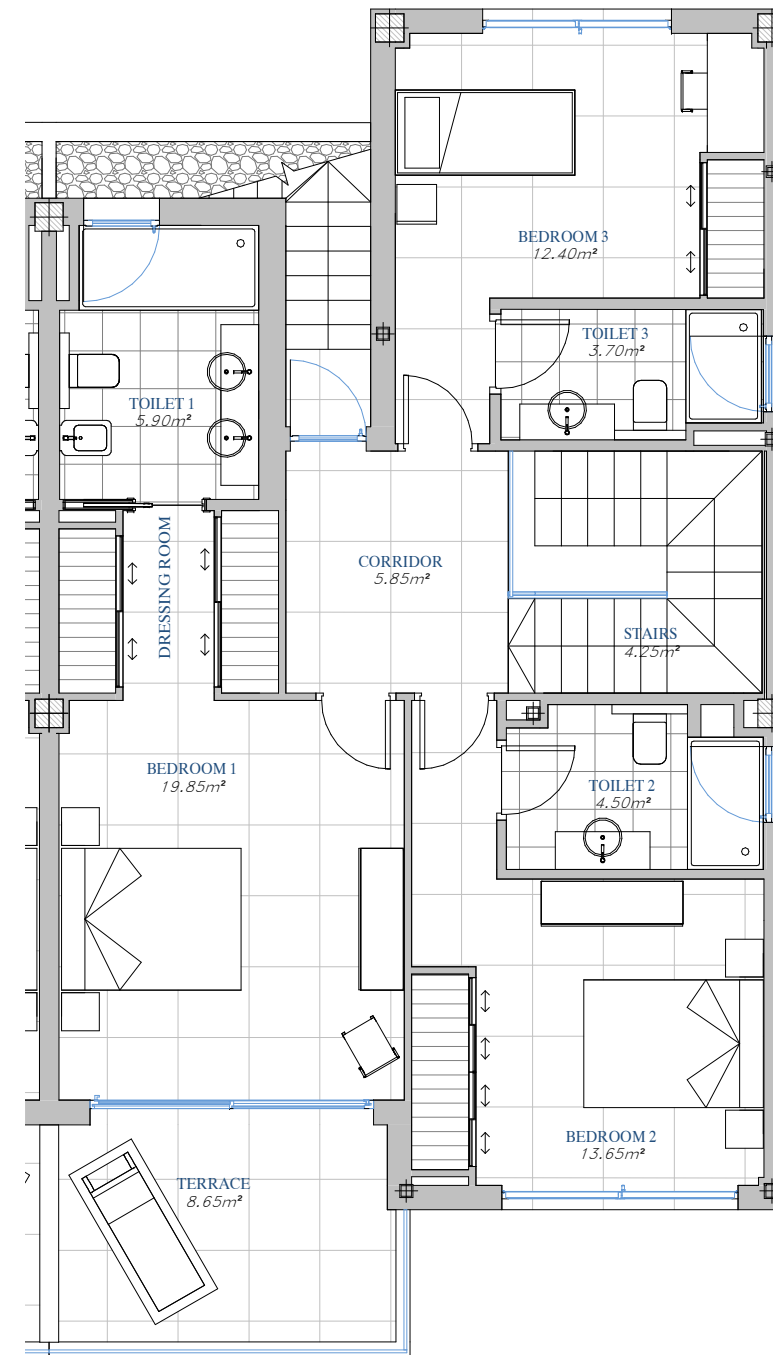
DUPLEX VILLAS
Nº 5



SITE PLAN



GROUND FLOOR

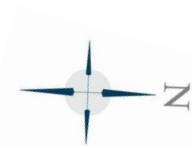


FIRST FLOOR

HIGUERÓN
Resort

BUILT AREA

Living Area	176,25 m ²
Terrace Area	129,21 m ²
Private Garden	25,80 m ²
TOTAL BUILT AREA:	305,46 m²



GRAPHIC SCALE

1/80



"This plan may be modified according to the development of the Execution Project and the construction. It does not constitute a contractual document. The reflected furnishing is for decoration purposes only. The Project Management reserves the right to make the necessary changes for functional, esthetic and legal reasons that may occur, without implying a decrease in the quality of the construction".

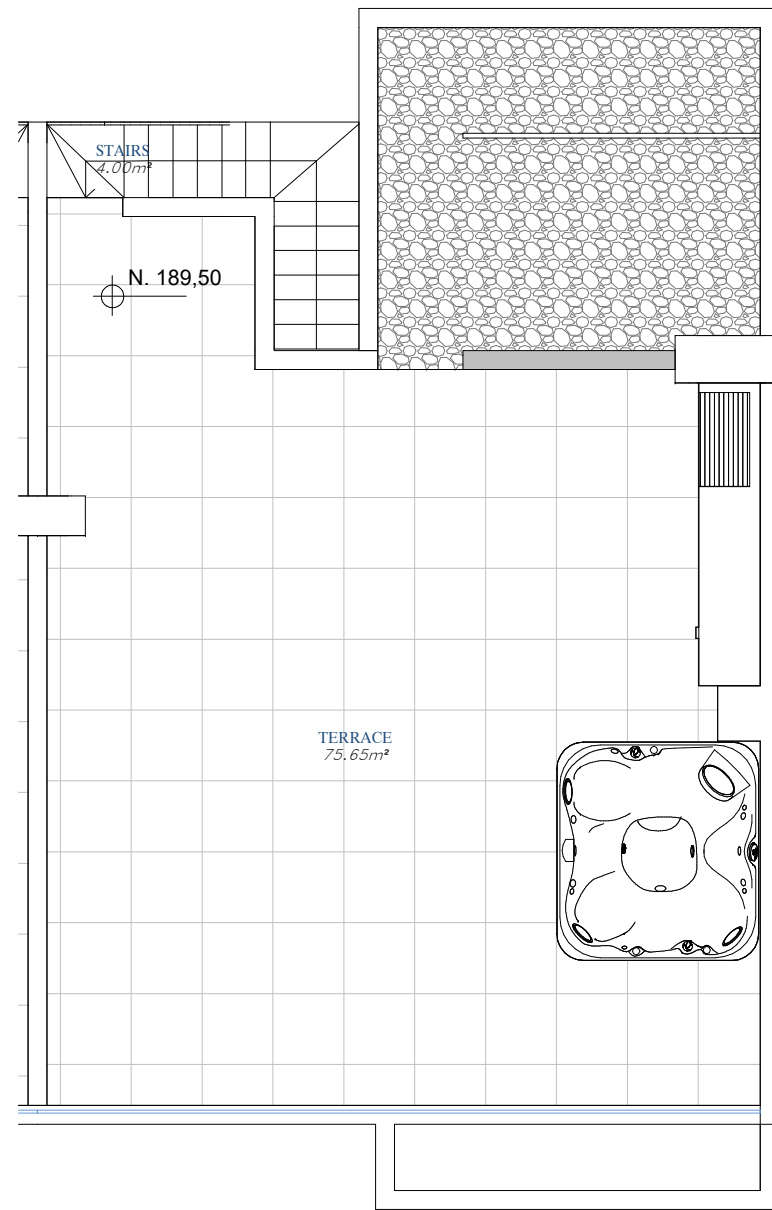


LOMAS DEL HIGUERÓN
by TOP GESTIÓN

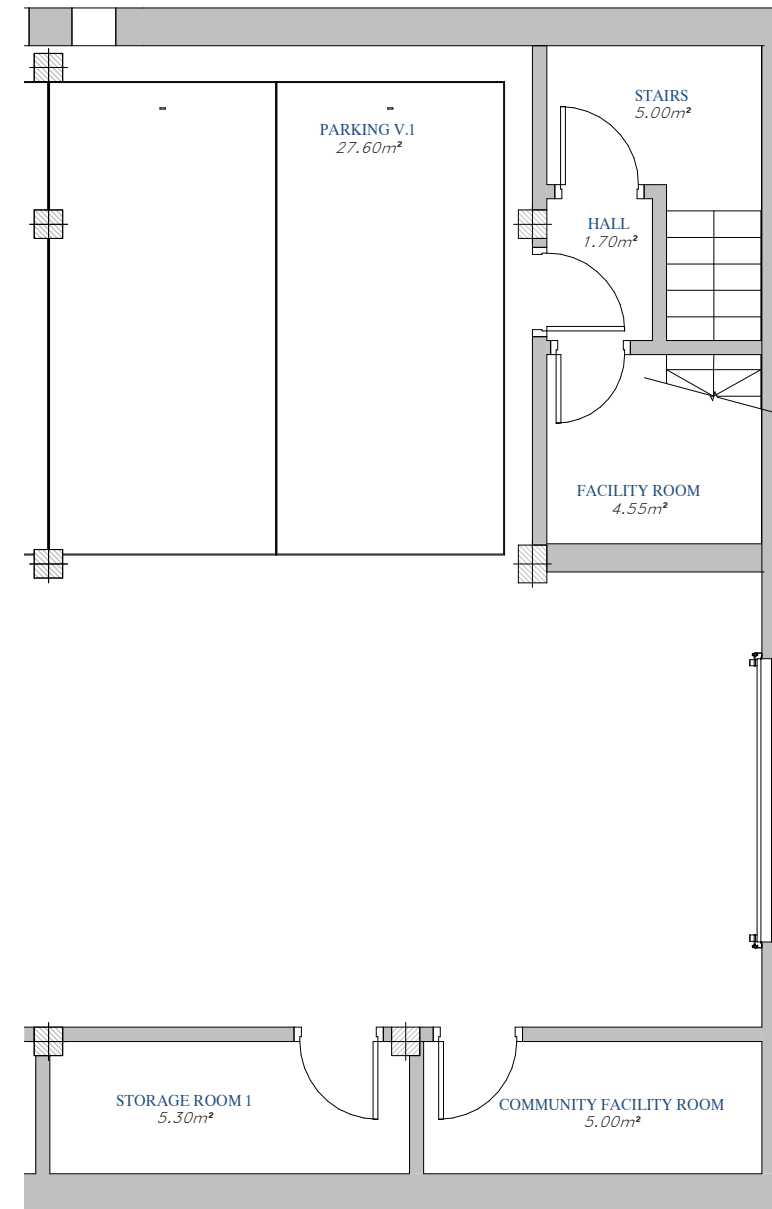
HIGUERÓN
Resort

BUILDING 4

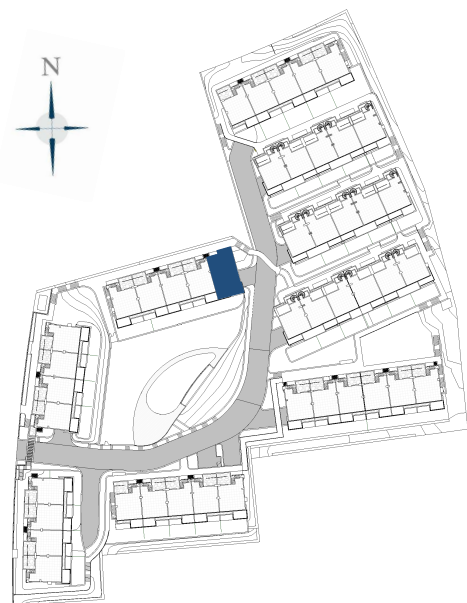
DUPLEX VILLAS
Nº 5



ROOF FLOOR



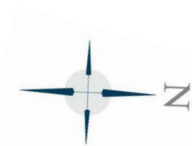
BASEMENT FLOOR



SITE PLAN

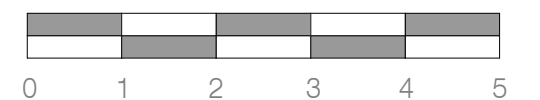
BUILT AREA

Living Area	176,25 m ²
Terrace Area	129,21 m ²
Private Garden	25,80 m ²
TOTAL BUILT AREA:	305,46 m²



GRAPHIC SCALE

1/80



"This plan may be modified according to the development of the Execution Project and the construction. It does not constitute a contractual document. The reflected furnishing is for decoration purposes only. The Project Management reserves the right to make the necessary changes for functional, esthetic and legal reasons that may occur, without implying a decrease in the quality of the construction".