



LOMAS DEL HIGUERÓN
by TOP GESTIÓN

BUILDING 1

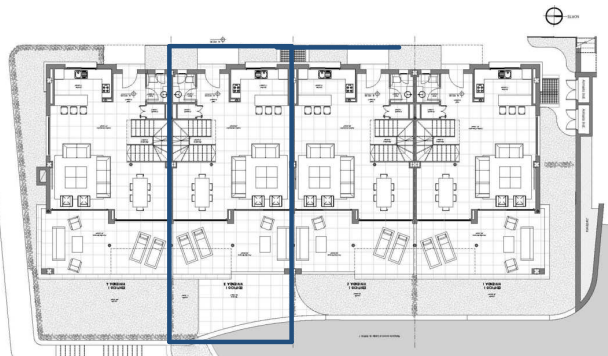
TOWNHOUSE 1.3

GROUND FLOOR & FIRST FLOOR

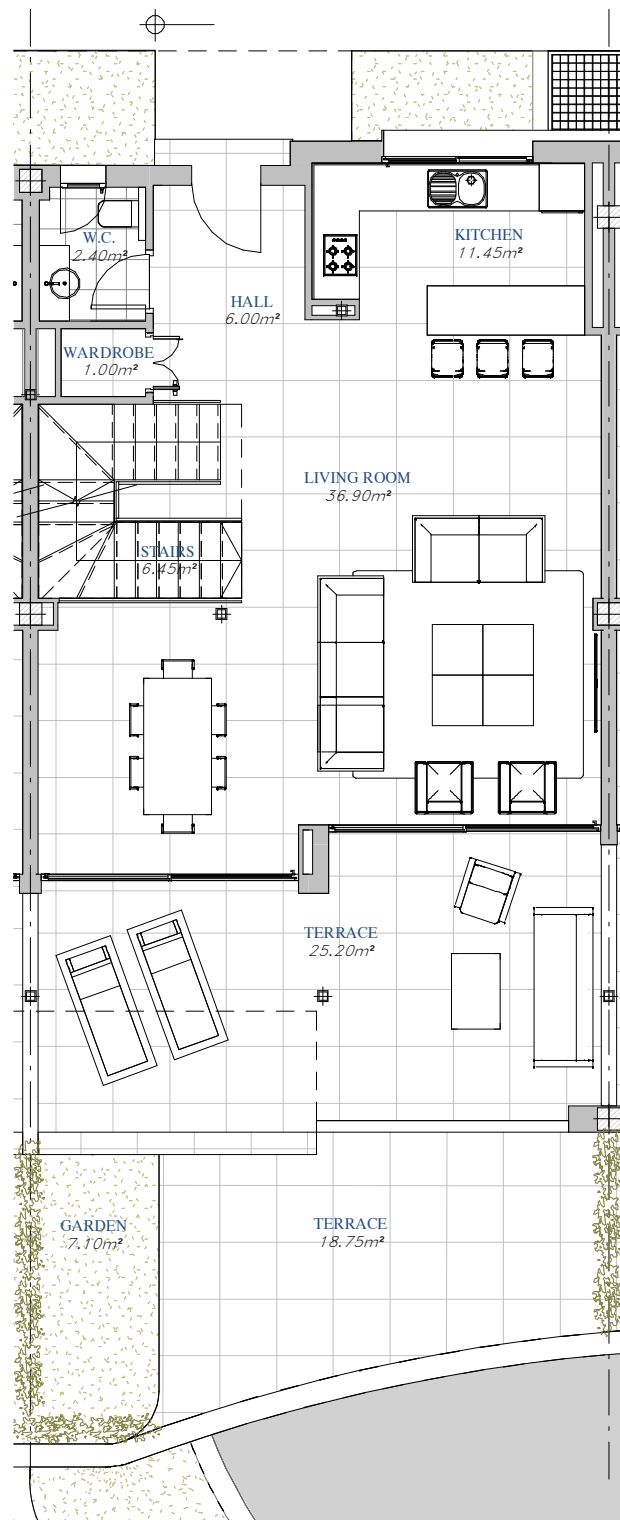
BUILT AREA

Living Area	170,60 m ²
Terrace	145,76 m ²
Private Garden	7,10 m ²
TOTAL BUILT AREA:	316,36 m²

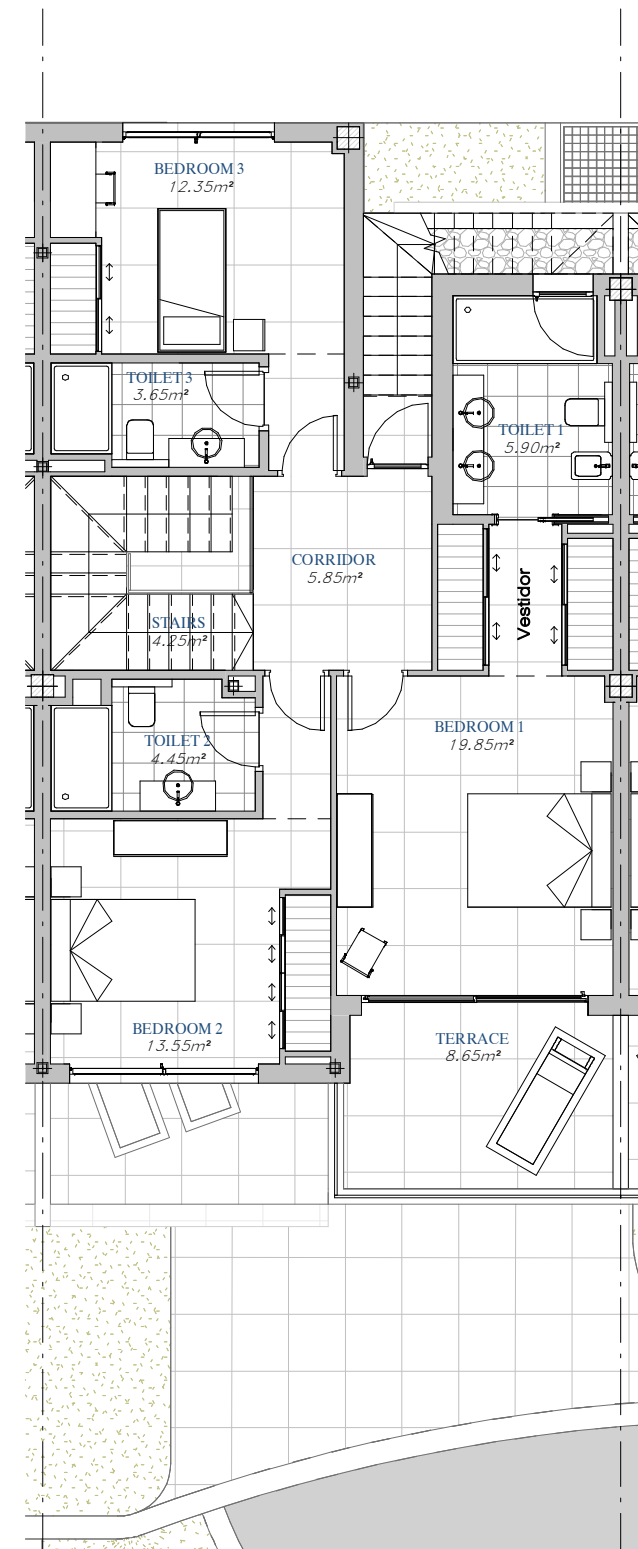
"This plan may be modified according to the development of the Execution Project and the construction. It does not constitute a contractual document. The reflected furnishing is for decoration purposes only. The Project Management reserves the right to make the necessary changes for functional, esthetic and legal reasons that may occur, without implying a decrease in the quality of the construction".



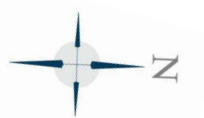
SITE PLAN



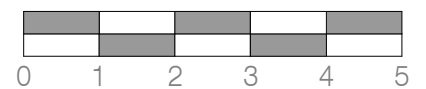
GROUND FLOOR



FIRST FLOOR



GRAPHIC SCALE





LOMAS DEL HIGUERÓN
by TOP GESTIÓN

BUILDING 1

TOWNHOUSE 1.3

ROOF FLOOR & BASEMENT FLOOR

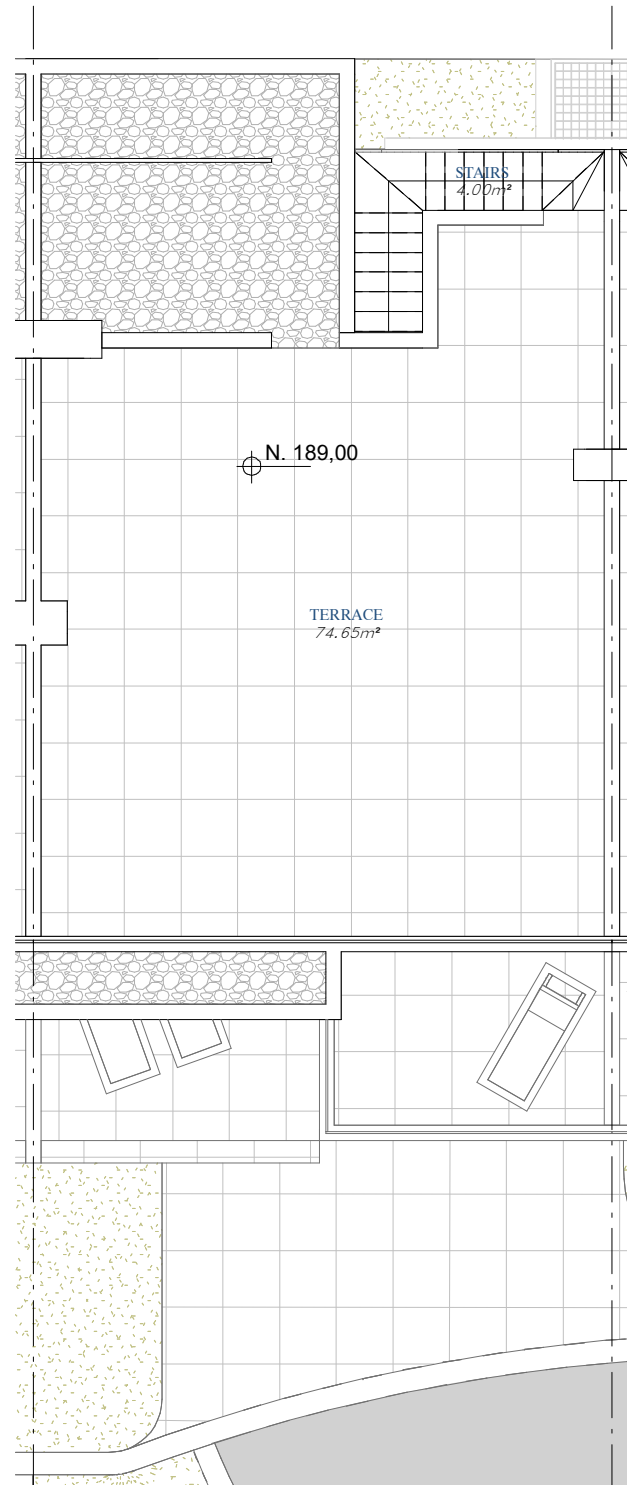
BUILT AREA

Living Area	170,60 m ²
Terrace	145,76 m ²
Private Garden	7,10 m ²
TOTAL BUILT AREA:	316,36 m²

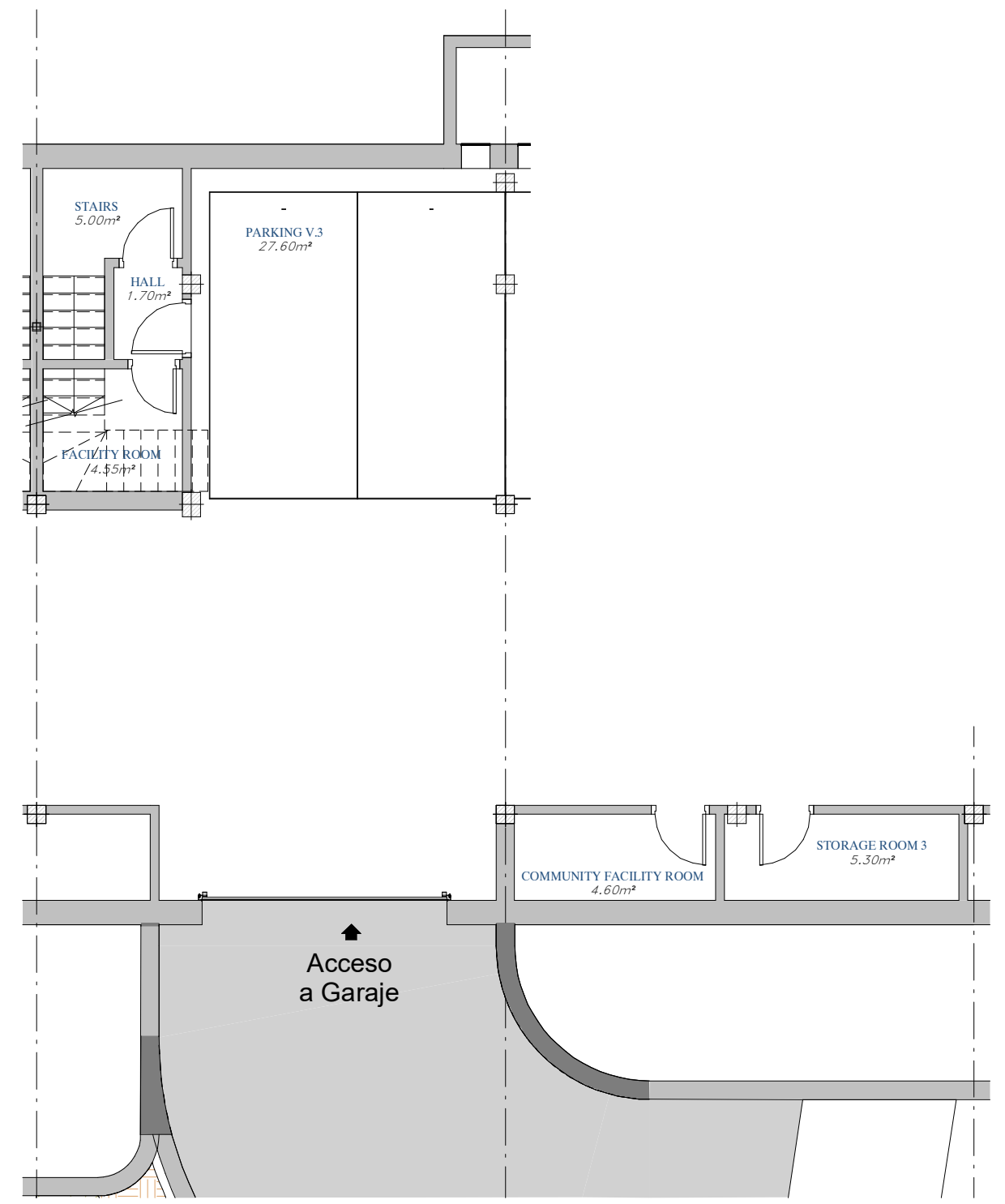
"This plan may be modified according to the development of the Execution Project and the construction. It does not constitute a contractual document. The reflected furnishing is for decoration purposes only. The Project Management reserves the right to make the necessary changes for functional, esthetic and legal reasons that may occur, without implying a decrease in the quality of the construction".



SITE PLAN



ROOF FLOOR



BASEMENT FLOOR



GRAPHIC SCALE

