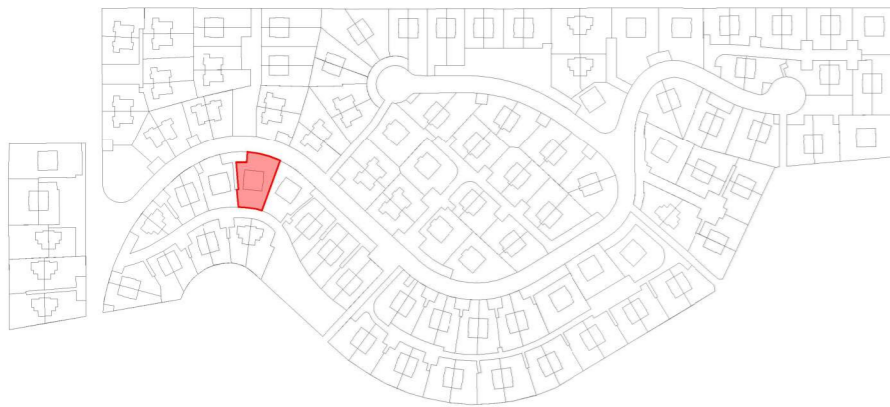


# SUNRISE BAY RESIDENCES



## HOUSE MII-09/10-B+ CONFROT (ground floor)



Useful area

Living-dining	52,95 m <sup>2</sup>
Distributor	5,44 m <sup>2</sup>
Kitchen	7,48 m <sup>2</sup>
Bedroom 1	12,58 m <sup>2</sup>
Bathroom 1	4,45 m <sup>2</sup>
Bathroom 2	2,55 m <sup>2</sup>
Laundryroom	3,36 m <sup>2</sup>
Staircase	10,88 m <sup>2</sup>
Bedroom 2	10,42 m <sup>2</sup>
Bathroom 3	4,05 m <sup>2</sup>
Bedroom 3	10,42 m <sup>2</sup>
Bathroom 4	4,05 m <sup>2</sup>

Total useful interior area 128,63 m<sup>2</sup>

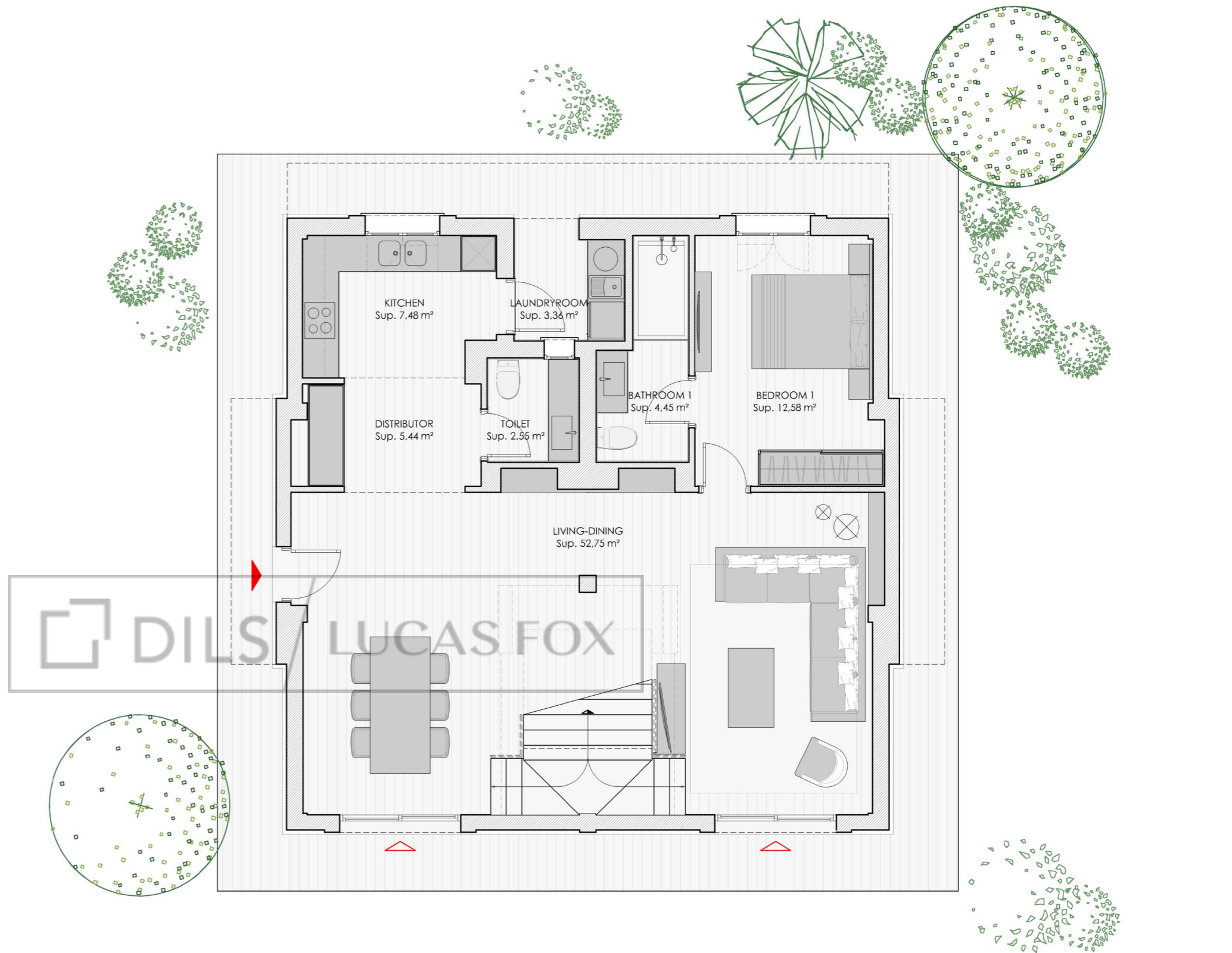
Built area

Closed built area	150,00 m <sup>2</sup>
Terrace built area	42,61 m <sup>2</sup>

Total built area 192,61 m<sup>2</sup>

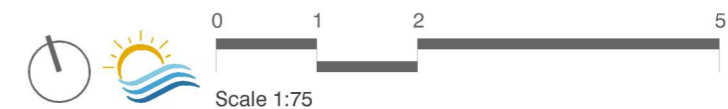
Garden area 301,54 m<sup>2</sup>

Plot area 452,70 m<sup>2</sup>

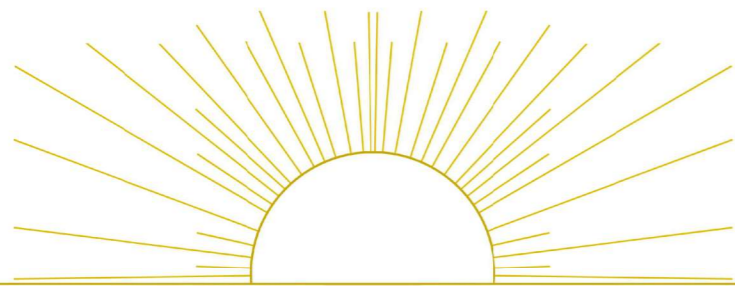


DILS LUCAS FOX

Ground floor



Representative plan of the project is not a contractual document; It may be subject to changes due to technical, legal or administrative requirements and licenses, as well as the construction or design necessities derived from the project development and works/construction management. All decorative and furniture elements are merely indicative.



# SUNRISE BAY

RESIDENCES



## HOUSE MII-09/10-B+ CONFORT (first floor)



Useful area

Living-dining	52,95 m <sup>2</sup>
Distributor	5,44 m <sup>2</sup>
Kitchen	7,48 m <sup>2</sup>
Bedroom 1	12,58 m <sup>2</sup>
Bathroom 1	4,45 m <sup>2</sup>
Bathroom 2	2,55 m <sup>2</sup>
Laundryroom	3,36 m <sup>2</sup>
Staircase	10,88 m <sup>2</sup>
Bedroom 2	10,42 m <sup>2</sup>
Bathroom 3	4,05 m <sup>2</sup>
Bedroom 3	10,42 m <sup>2</sup>
Bathroom 4	4,05 m <sup>2</sup>

Total useful interior area 128,63 m<sup>2</sup>

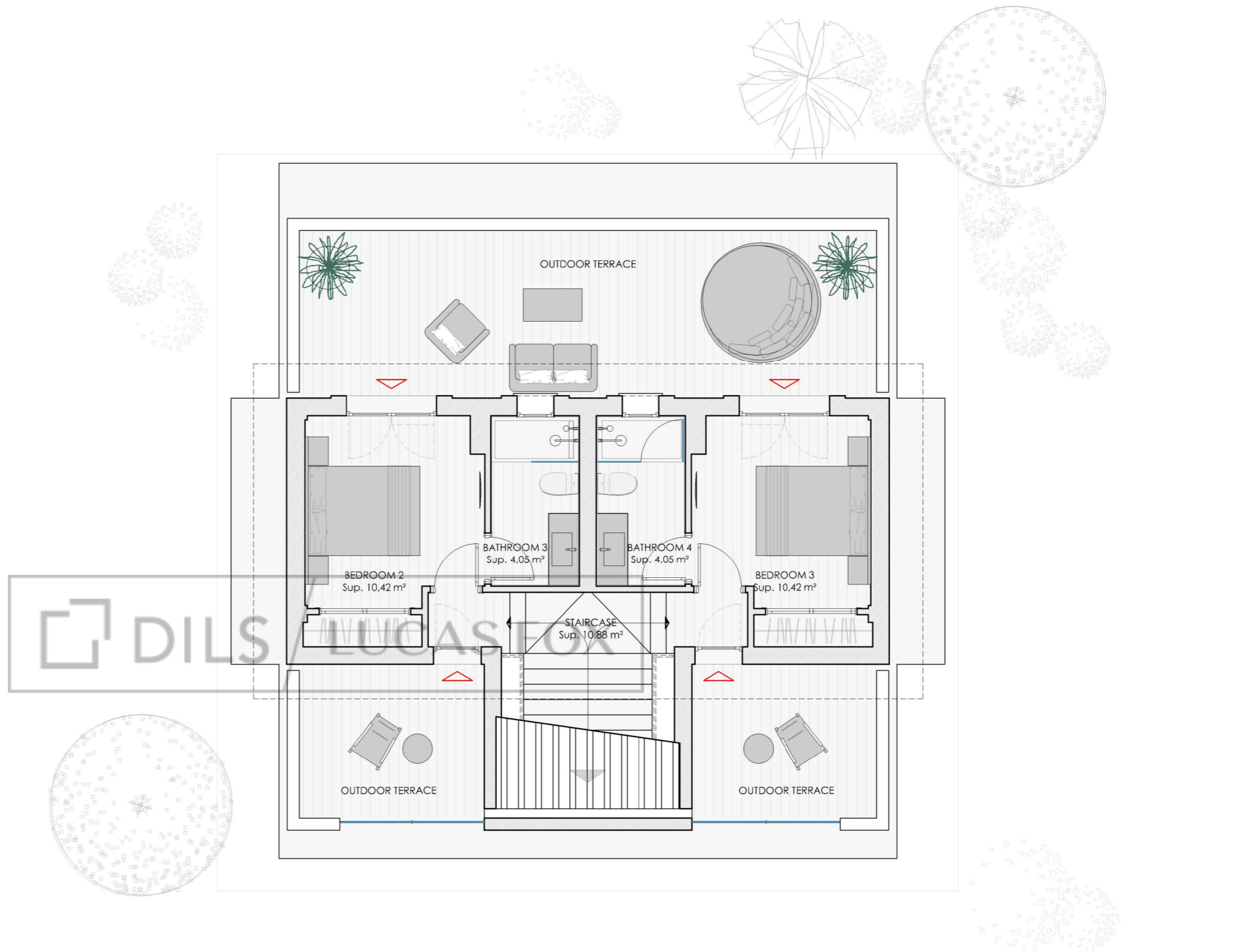
Built area

Closed built area	150,00 m <sup>2</sup>
Terrace built area	42,61 m <sup>2</sup>

Total built area 192,61 m<sup>2</sup>

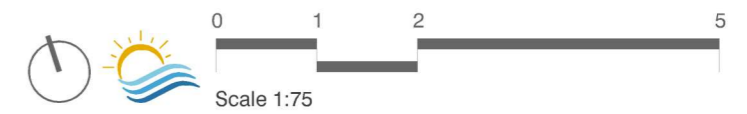
Garden area 301,54 m<sup>2</sup>

Plot area 452,70 m<sup>2</sup>



DILS LUCAS FOX

First floor



Representative plan of the project is not a contractual document; It may be subject to changes due to technical, legal or administrative requirements and licenses, as well as the construction or design necessities derived from the project development and works/construction management. All decorative and furniture elements are merely indicative.