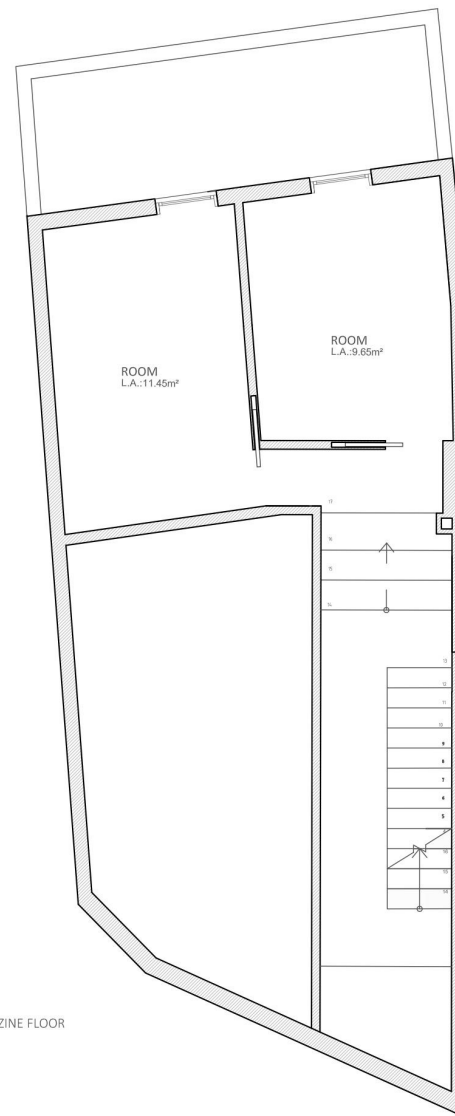


GROUND FLOOR



MEZZAZINE FLOOR

Cityhouse of three floors with two bedrooms, two bathrooms, one toilet and living-dining room-kitchen with a surface area of $132,27m^2$ with a patio of $10,56m^2$ on the ground floor and a roof terrace of $16,06m^2$.

-There are two rooms of $11,45m^2$ and $9,65m^2$, they are located on the mezzanine.