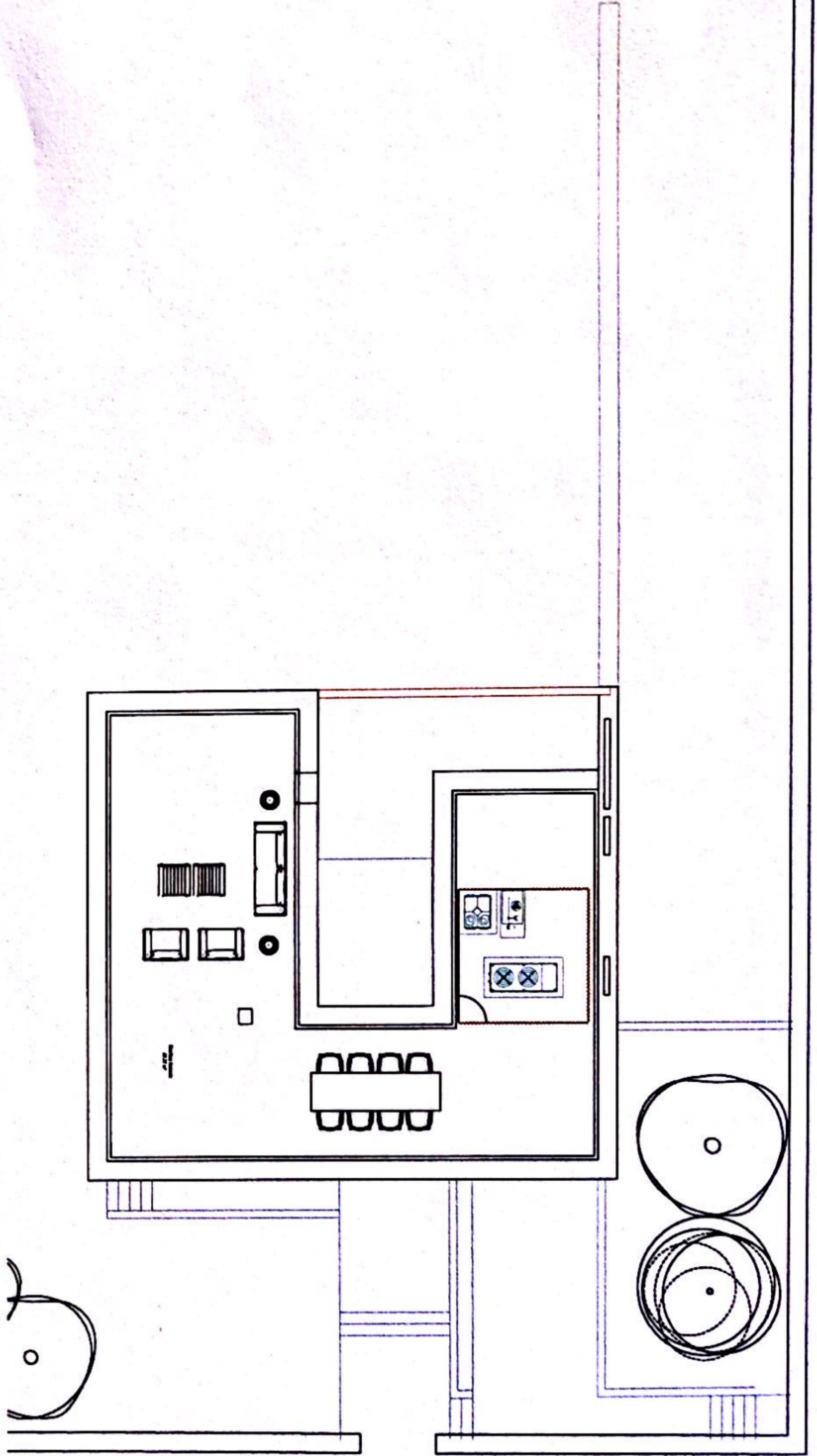
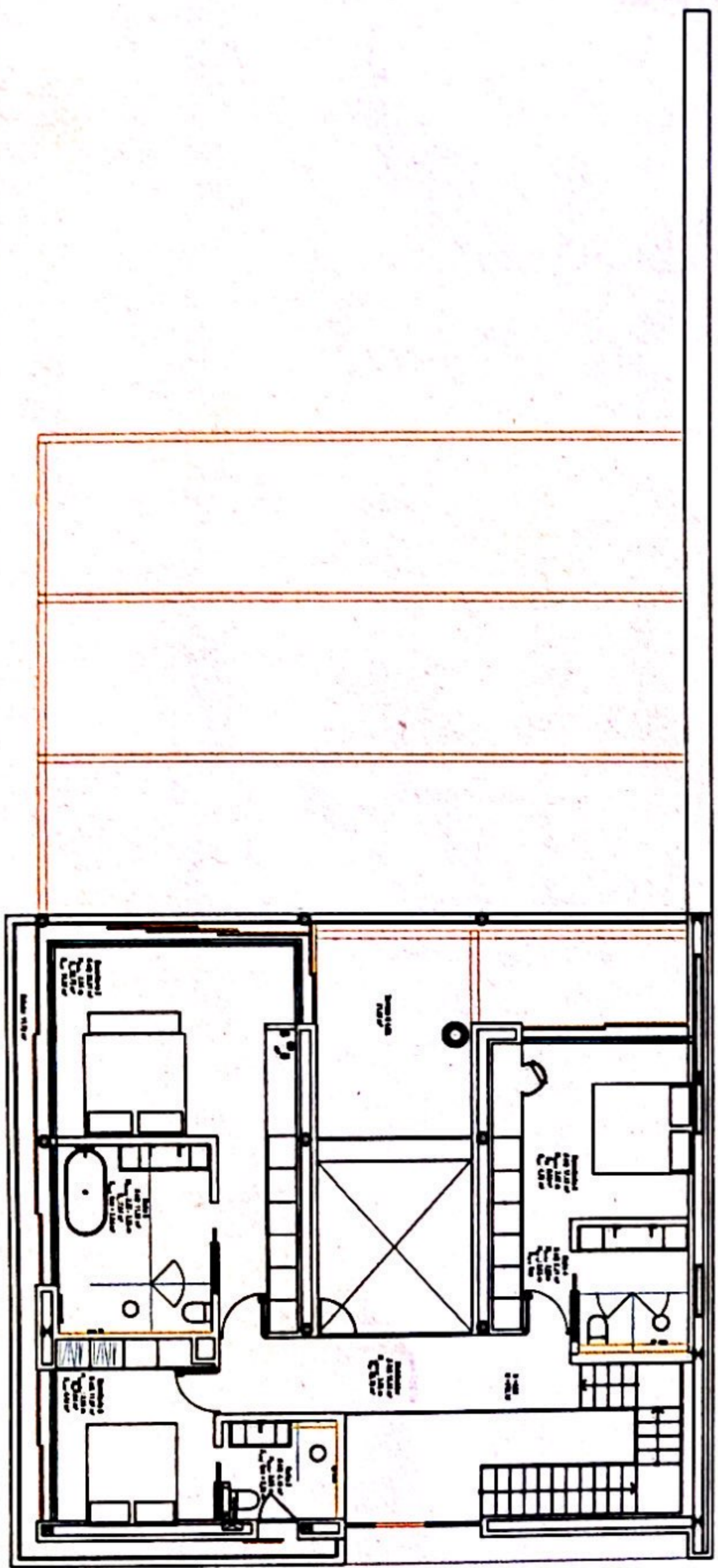
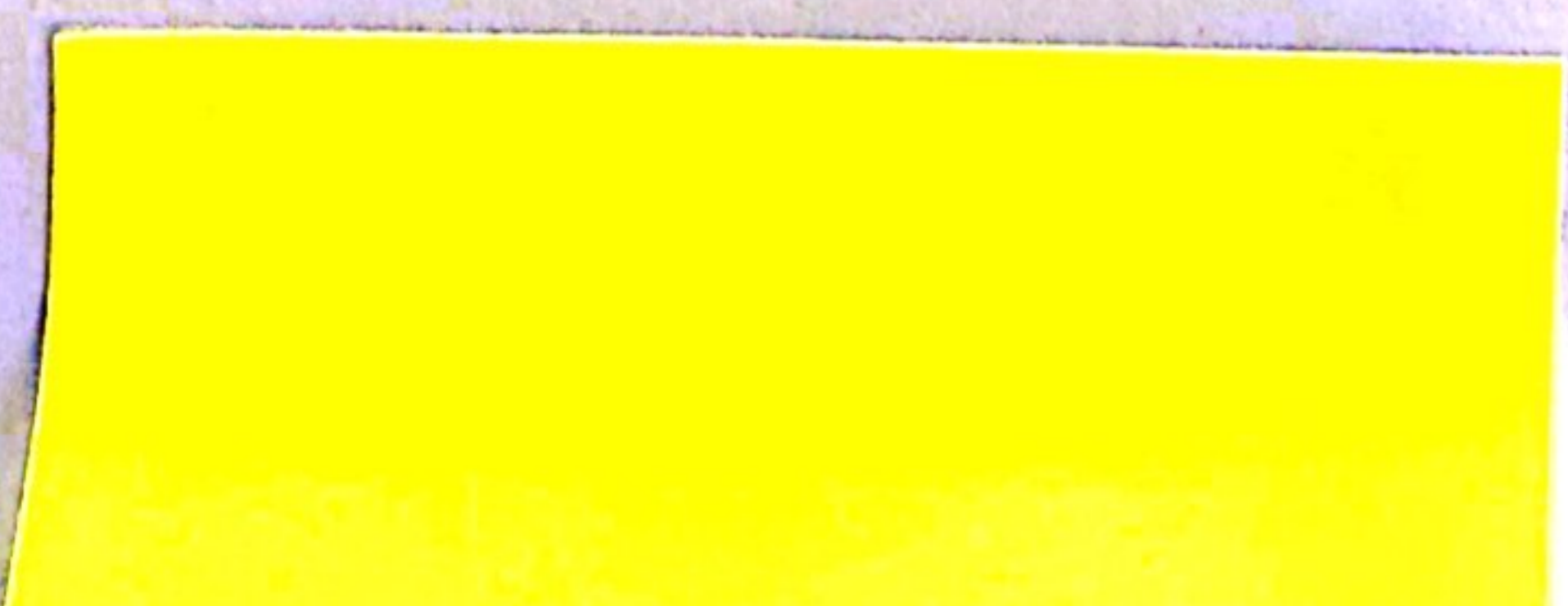


Room	Area (sq ft)	Volume (cu ft)	Notes
Garage	120.27	1.80	Auto
Auto Garage	1.80	1.80	Auto
Reception 1	14.42	14.42	Auto
Reception 2	6.88	6.88	Auto
Reception 3	11.21	11.21	Auto
Auto to entrance	14.24	14.24	Auto
Reception 4	6.87	6.87	Auto
Auto-Corridor-Corner	62.28	62.28	Auto
Auto	2.28	2.28	Auto
Reception 5	11.89	11.89	Auto
Reception 6	4.32	4.32	Auto
Reception 7	21.26	21.26	Auto
Reception 8	1.88	1.88	Auto
Reception 9	11.67	11.67	Auto
Reception 10	4.19	4.19	Auto
Reception 11	22.81	22.81	Auto
Reception 12	11.28	11.28	Auto
Reception 13	17.73	17.73	Auto
Reception 14	4.71	4.71	Auto
Reception 15	18.41	18.41	Auto
TOTAL (incl. Volume 6)	288.23	288.23	Total
Total (excl. Volume 6)	224.25	224.25	Total
Volume 6	148.27	148.27	Auto
Volume 7	48.28	48.28	Auto
Volume 8	28.79	28.79	Auto
Volume 9	64.82	64.82	Auto
Volume 10	21.82	21.82	Auto
Volume 11	82.27	82.27	Auto
Volume 12	1.78	1.78	Auto





Room	Area (sq ft)	Area (sq m)	Notes
Garage	102.27	9.41	Auto
Auto Storage	2.00	0.19	Auto
Dishwasher 1	9.40	0.87	Auto
Lauder	6.89	0.64	Auto
Room	11.21	1.04	Auto
Room de nettoyage	9.24	0.86	Auto
Magasin pièces	4.97	0.46	Auto
Espace-Change-Cour	88.20	8.14	Auto
App	2.00	0.19	Auto
Dishwasher 1	11.59	1.07	Auto
Salon 1	4.28	0.40	Auto
Veranda	21.20	1.96	Auto
Deposito	2.80	0.26	Auto
Dishwasher 2	11.27	1.04	Auto
Salon 2	4.10	0.38	Auto
Dishwasher 3	22.81	2.11	Auto
Salon 3	11.20	1.04	Auto
Dishwasher 4	17.10	1.59	Auto
Salon 4	4.71	0.44	Auto
Dishwasher 5	9.41	0.87	Auto
20211: 601 Vehículo B			
Total Construcción Vehículo B		583.20	54.00
Terrazo 11.620	14.57	1.35	Piso de
Terrazo 10-120	4.20	0.39	Piso de
Acero	20.79	1.92	Piso de
Pavimento	88.82	8.20	Piso de
Terrazo 10-140	21.82	2.01	Piso de
Módulo Cocina	82.17	7.61	Piso de
Deposito auto	1.118.81	103.81	Piso de



Autor: dt
 Fecha: 2022
 Escala: A3 5/8
5.03