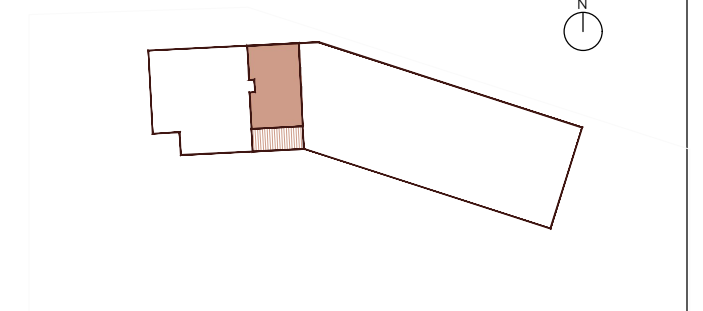
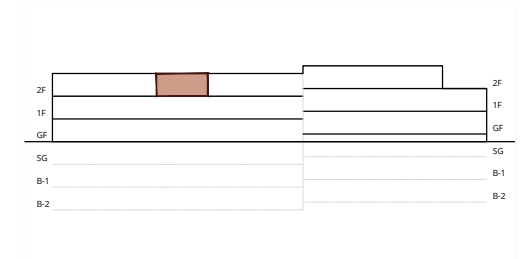
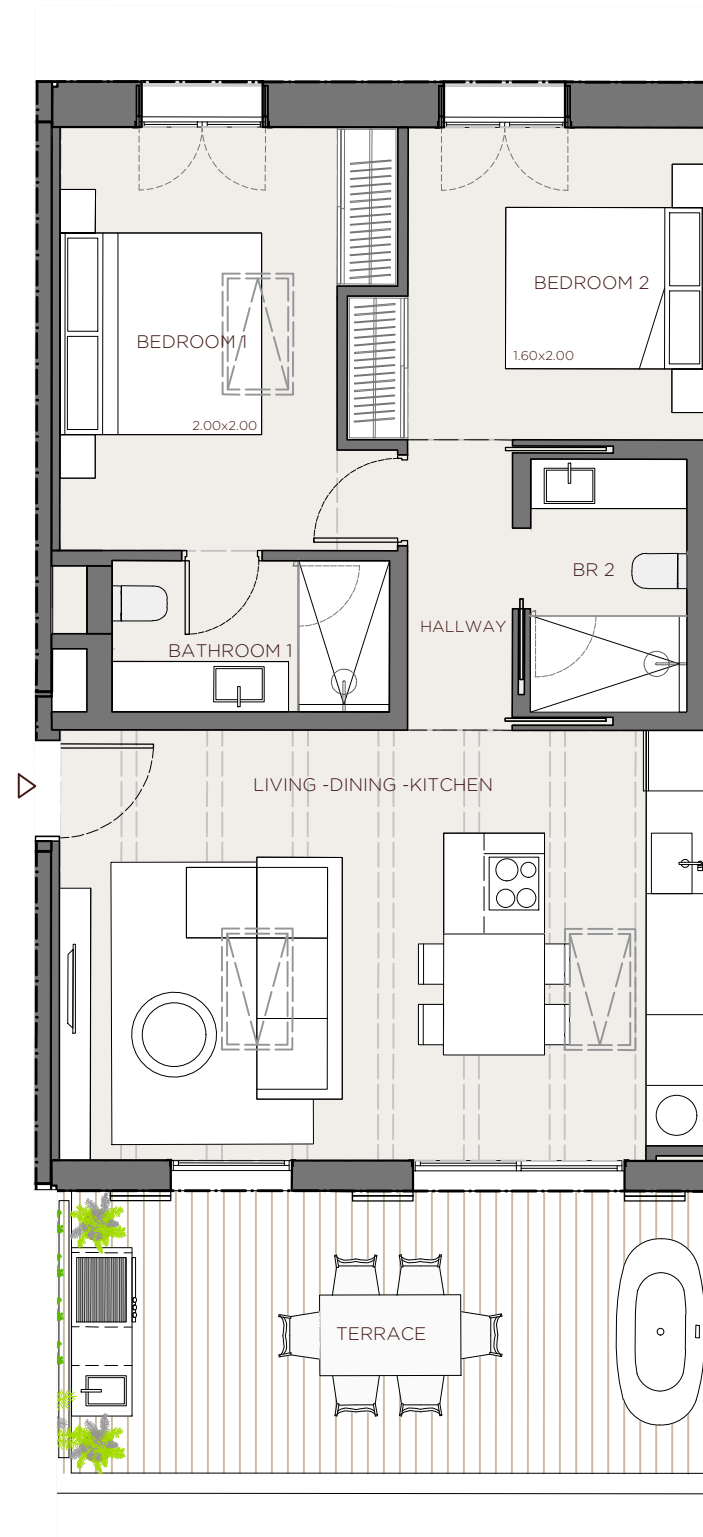
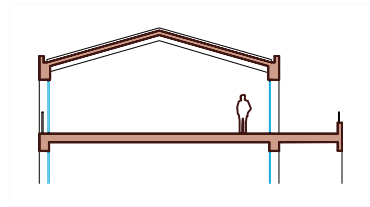


XOJAY



3 0 -APARTMENT-

INDOOR USABLE FLOOR AREA	61,45
INDOOR GROSS FLOOR AREA	73,74
OUTDOOR GROSS FLOOR AREA	19,34
TOTAL GROSS FLOOR AREA	93,08
GFA + COMMON AREAS	118,65

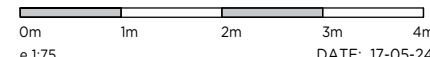
3 0 -USABLE FLOOR AREA-

ROOM	SURFACE
LIVING-DINING-KITCHEN	27,41
HALLWAY	2,86
BEDROOM 1	13,10
BATHROOM 1	4,13
BEDROOM 2	10,06
BATHROOM 2	3,89

TERRACE	18,28
---------	-------

- KITCHEN
- WARDROBES
- SMART CONTROL
- SOLAR CONTROL GLASS
- EXTERIOR SHUTTERS
- COMMUNITY POOL
- COMMUNITY SPA
- COMMUNITY GYM
- AC/HEATING

XOJ **CMV**

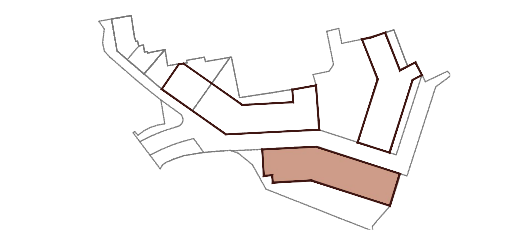


*This document is informative, it has not contractual value until the structure and installations are completely defined

**THIS DOCUMENT INCLUDING USABLE AREAS AND GROSS FLOOR AREAS IS ONLY TEMPORARY AND NOT FINAL DUE TO MUNICIPALY CHANGES AND CONSTRUCTION DESIGN

XOJONQUET

THE PARK RESIDENCES



APARTMENT **3 0**