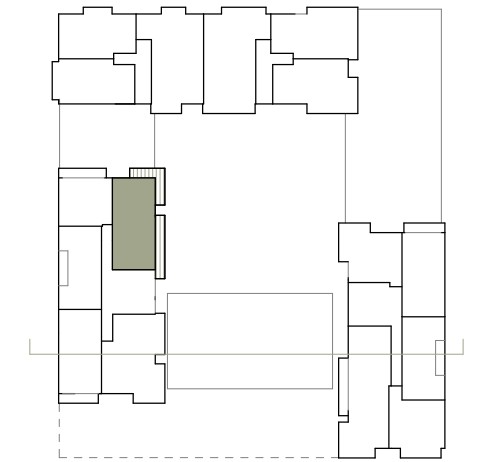
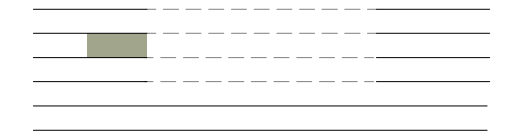


XOJAY

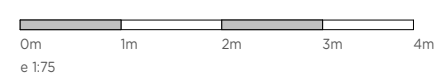


V.3U APARTMENT	
INDOOR USABLE FLOOR AREA	77.25
INDOOR GROSS FLOOR AREA	94.76
TERRACE 01	14.54
TERRACE 02	14.75
GROSS FLOOR AREA	124.05
GFA + COMMON AREAS	149.55

V.3U- USABLE FLOOR AREA	
ROOM	SURFACE
LIVING-DINING-KITCHEN	37.19
BEDROOM 1	15.33
BATHROOM 1	5.54
BEDROOM 2	14.24
BATHROOM 2	4.94
TOTAL USABLE FLOOR AREA	77.25

- KITCHEN
- WARDROBES
- SMART CONTROL
- PANORAMA WINDOWS
- SOLAR CONTROL GLASS
- COMMUNITY POOL
- COMMUNITY GYM
- SECURITY SYSTEM
- ART WALL
- BLINDS
- AC/HEATING
- (M) MOTORIZED WINDOW

XOPARQ CMV



DATE: 19/10/23

*This document is informative, it has not contractual value until the structure and installations are completely defined

****THIS DOCUMENT INCLUDING USABLE AREAS AND GROSS FLOOR AREAS IS ONLY TEMPORARY AND NOT FINAL DUE TO MUNICIPALY CHANGES AND CONSTRUCTION DESIGN**

XOPARQ
The Palma Residences

APARTMENT

3.U