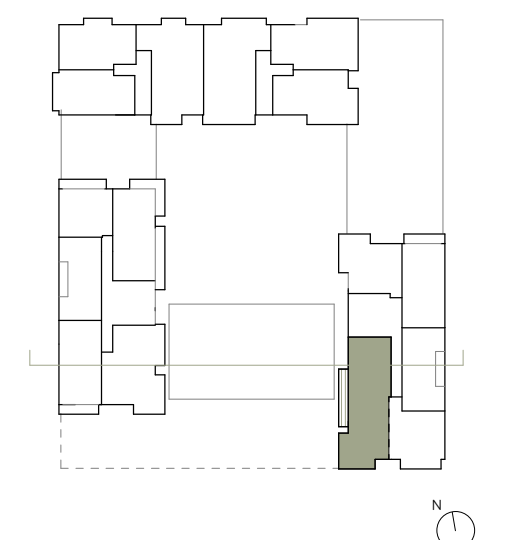
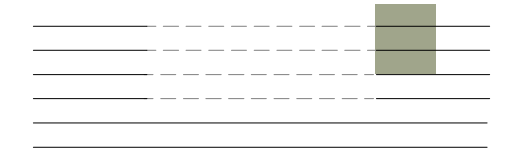
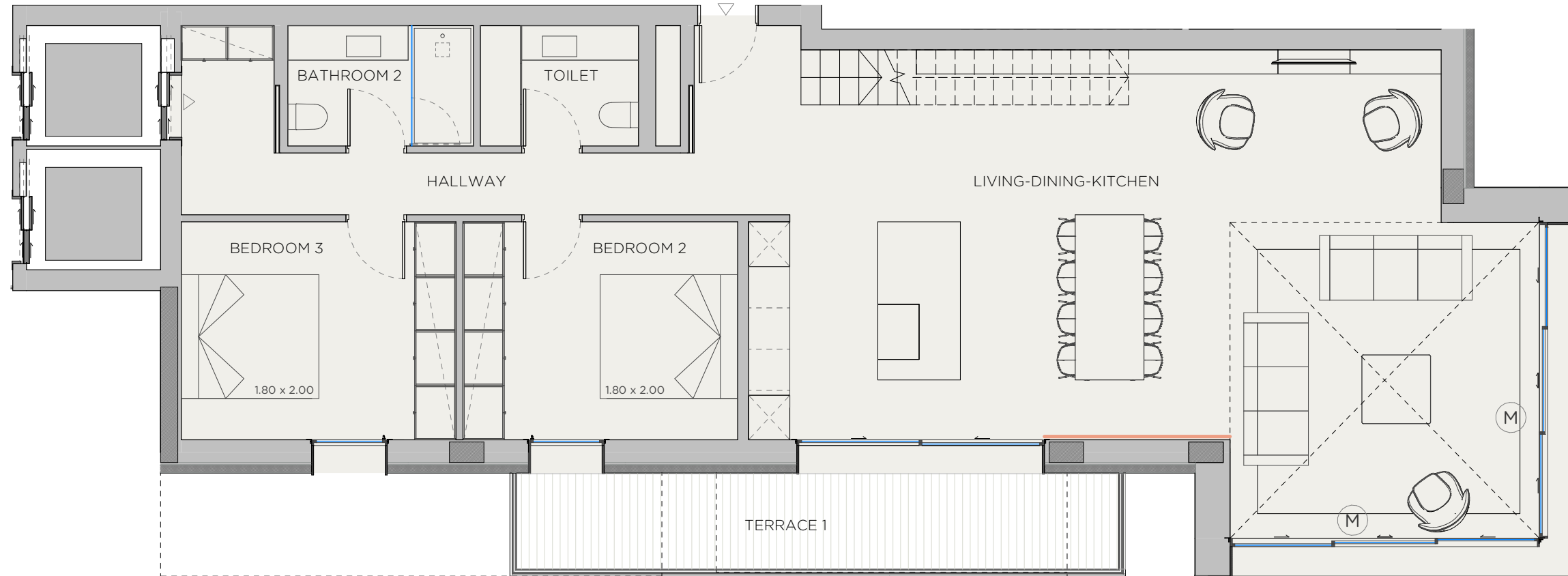


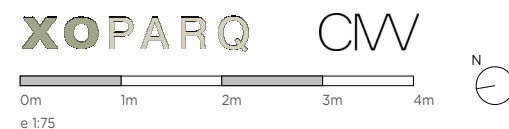
# XOJAY



V.3P APARTMENT	
INDOOR USABLE FLOOR AREA	169.32
INDOOR GROSS FLOOR AREA	210.50
TERRACE 01	13.43
TERRACE 02	72.17
GROSS FLOOR AREA	296.10
GFA + COMMON AREAS	356.98

V.3P- USABLE FLOOR AREA	
ROOM	SURFACE
LIVING-DINING-KITCHEN	70.47
BEDROOM 2	12.66
BEDROOM 3	12.66
BATHROOM 2	4.73
TOILET	4.03
HALLWAY	9.48
BEDROOM 1	22.60
WALKIN CLOSET	6.09
BATHROOM 1	6.26
STUDIO	7.68
HALLWAY	12.66
TOTAL USABLE FLOOR AREA	169.32

- KITCHEN
- WARDROBES
- SMART CONTROL
- PANORAMA WINDOWS
- SOLAR CONTROL GLASS
- COMMUNITY POOL
- COMMUNITY GYM
- SECURITY SYSTEM
- ART WALL
- BLINDS
- AC/HEATING
- (M) MOTORIZED WINDOW



DATE: 19/10/23

\*This document is informative, it has not contractual value until the structure and installations are completely defined

**\*\*THIS DOCUMENT INCLUDING USABLE AREAS AND GROSS FLOOR AREAS IS ONLY TEMPORARY AND NOT FINAL DUE TO MUNICIPALY CHANGES AND CONSTRUCTION DESIGN**

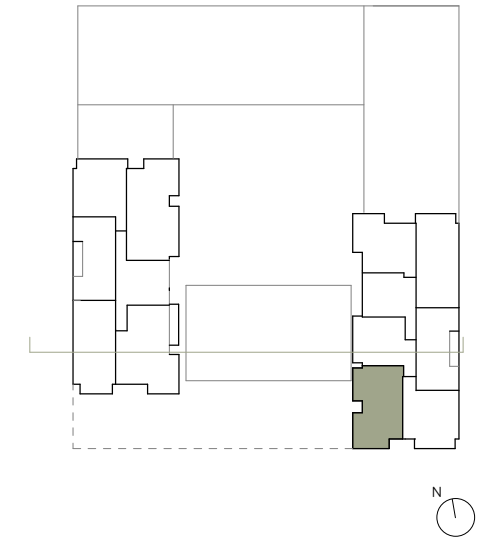
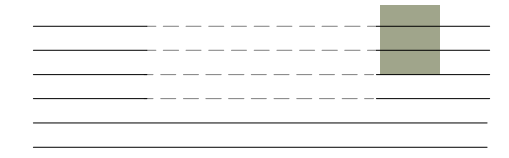
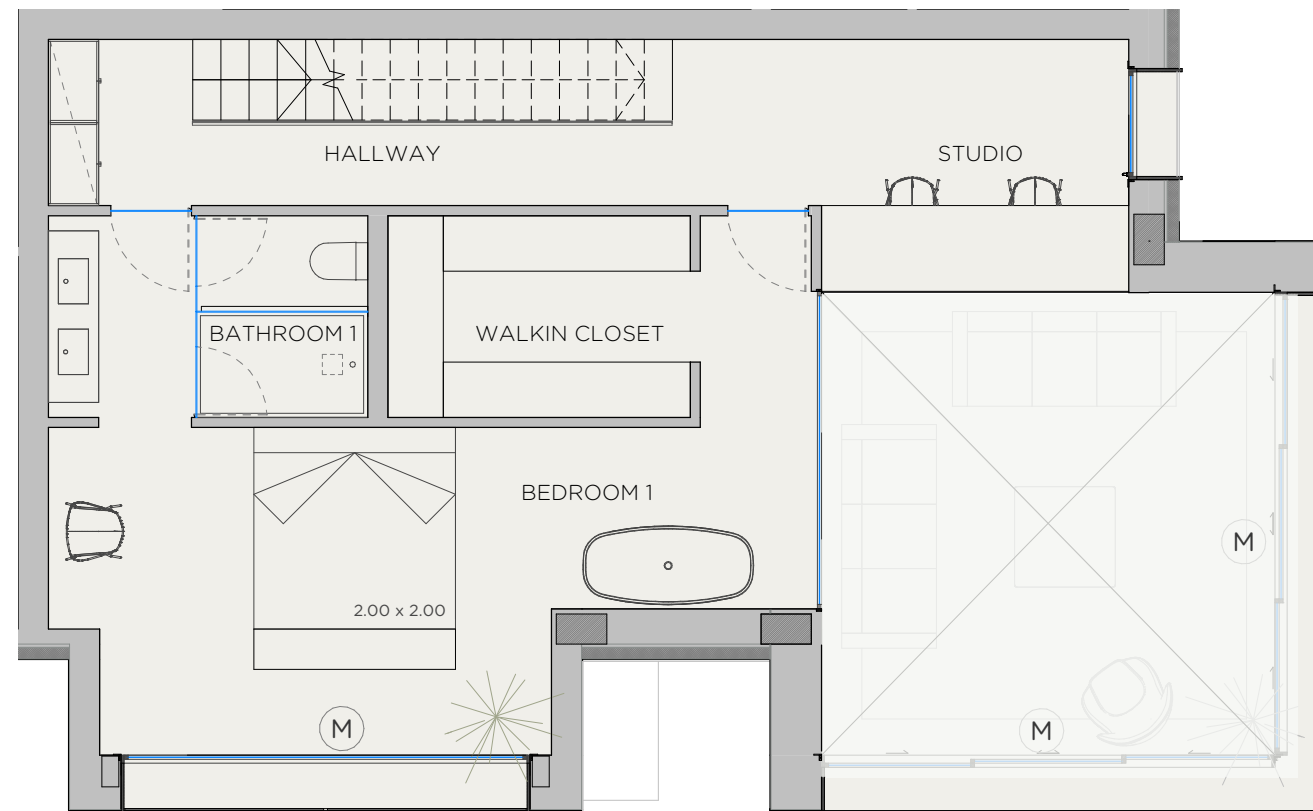
# XOPARQ

The Palma Residences

APARTMENT

3.P

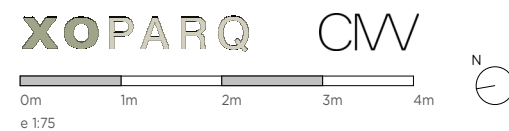
# XOJAY



V.3P APARTMENT	
INDOOR USABLE FLOOR AREA	169.32
INDOOR GROSS FLOOR AREA	210.50
TERRACE 01	13.43
TERRACE 02	72.17
GROSS FLOOR AREA	296.10
GFA + COMMON AREAS	356.98

V.3P- USABLE FLOOR AREA	
ROOM	SURFACE
LIVING-DINING-KITCHEN	70.47
BEDROOM 2	12.66
BEDROOM 3	12.66
BATHROOM 2	4.73
TOILET	4.03
HALLWAY	9.48
BEDROOM 1	22.60
WALKIN CLOSET	6.09
BATHROOM 1	6.26
STUDIO	7.68
HALLWAY	12.66
TOTAL USABLE FLOOR AREA	169.32

- KITCHEN
- WARDROBES
- SMART CONTROL
- PANORAMA WINDOWS
- SOLAR CONTROL GLASS
- COMMUNITY POOL
- COMMUNITY GYM
- SECURITY SYSTEM
- ART WALL
- BLINDS
- AC/HEATING
- (M) MOTORIZED WINDOW



DATE: 19/10/23

\*This document is informative, it has not contractual value until the structure and installations are completely defined

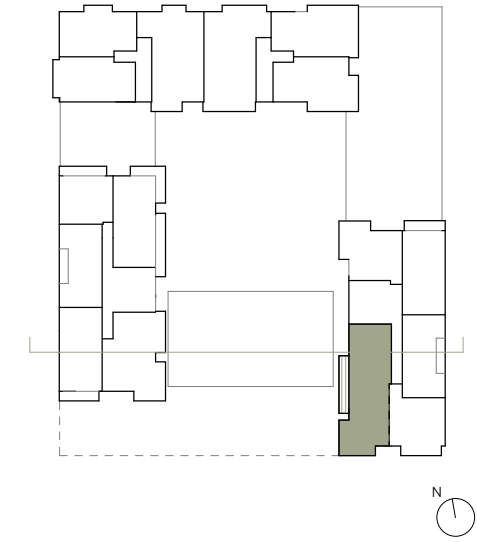
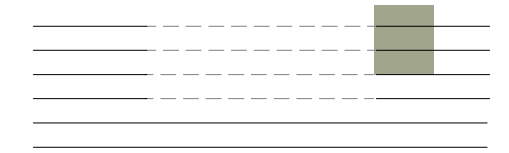
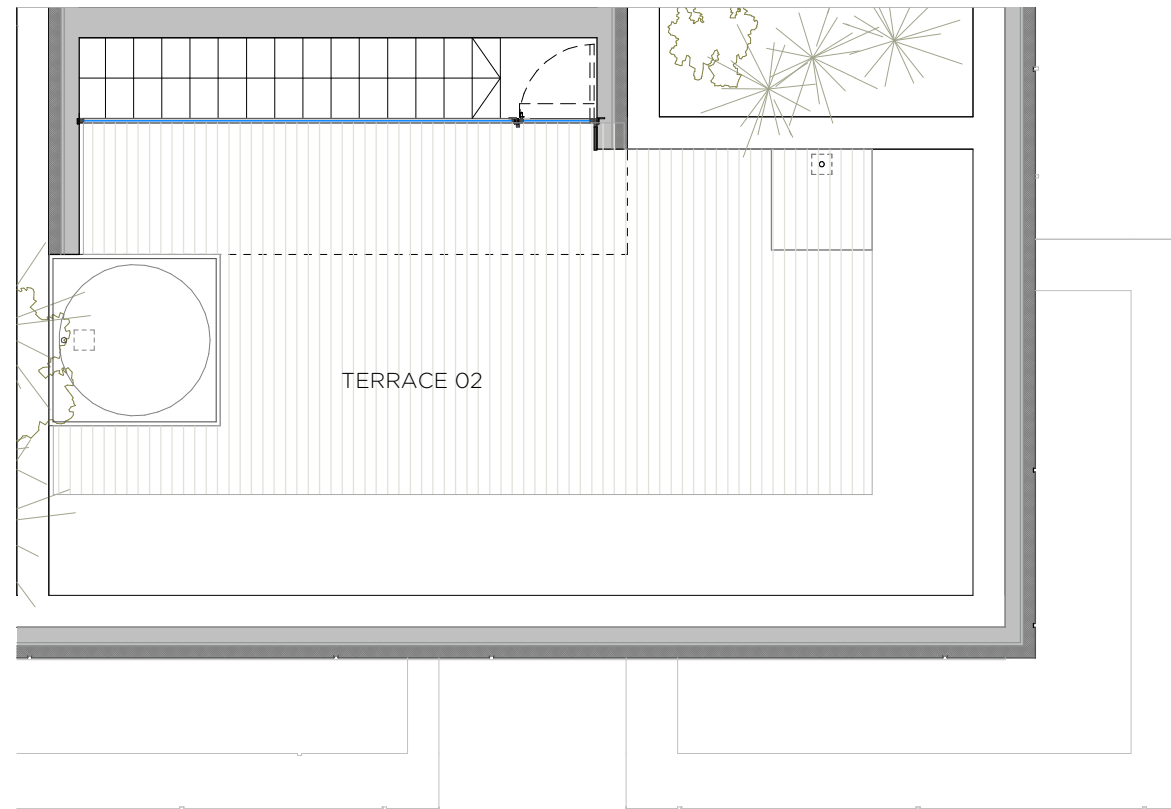
**\*\*THIS DOCUMENT INCLUDING USABLE AREAS AND GROSS FLOOR AREAS IS ONLY TEMPORARY AND NOT FINAL DUE TO MUNICIPALY CHANGES AND CONSTRUCTION DESIGN**

# XOPARQ

The Palma Residences

APARTMENT

**3.P**



V.3P APARTMENT	
INDOOR USABLE FLOOR AREA	169.32
INDOOR GROSS FLOOR AREA	210.50
TERRACE 01	13.43
TERRACE 02	72.17
GROSS FLOOR AREA	296.10
GFA + COMMON AREAS	356.98

V.3P- USABLE FLOOR AREA	
ROOM	SURFACE
LIVING-DINING-KITCHEN	70.47
BEDROOM 2	12.66
BEDROOM 3	12.66
BATHROOM 2	4.73
TOILET	4.03
HALLWAY	9.48
BEDROOM 1	22.60
WALKIN CLOSET	6.09
BATHROOM 1	6.26
STUDIO	7.68
HALLWAY	12.66
TOTAL USABLE FLOOR AREA	169.32

- KITCHEN
- WARDROBES
- SMART CONTROL
- PANORAMA WINDOWS
- SOLAR CONTROL GLASS
- COMMUNITY POOL
- COMMUNITY GYM
- SECURITY SYSTEM
- ART WALL
- BLINDS
- AC/HEATING
- (M) MOTORIZED WINDOW

**XOPARQ** **CMV**

DATE: 19/10/23

\*This document is informative, it has not contractual value until the structure and installations are completely defined

**\*\*THIS DOCUMENT INCLUDING USABLE AREAS AND GROSS FLOOR AREAS IS ONLY TEMPORARY AND NOT FINAL DUE TO MUNICIPALY CHANGES AND CONSTRUCTION DESIGN**