

V.30 APARTMENT	
INDOOR USABLE FLOOR AREA	118.73
INDOOR GROSS FLOOR AREA	149.53
TERRACE	98.65
GROSS FLOOR AREA	248.18
GFA + COMMON AREAS	299.21

V.30- USABLE FLOOR AREA	
ROOM	SURFACE
LIVING-DINING_KITCHEN	37.20
BEDROOM 1	12.71
BATHROOM 1	5.86
BEDROOM 2	12.71
BATHROOM 2	5.94
BEDROOM 3	20.96
ENTRANCE	8.91
BATHROOM 3	5.53
HALLWAY	8.91
TOTAL USABLE FLOOR AREA	118.73

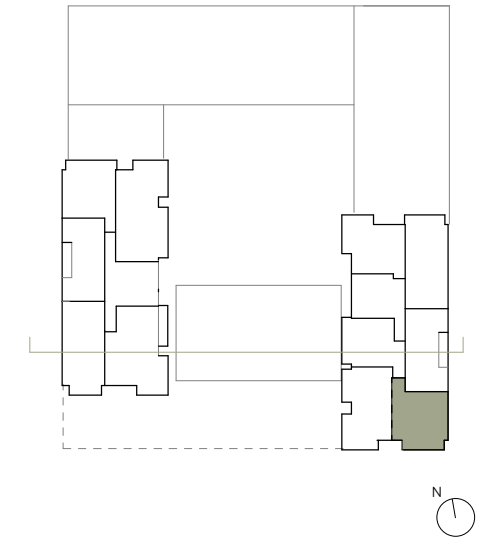
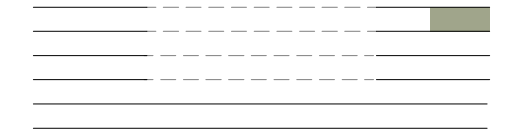
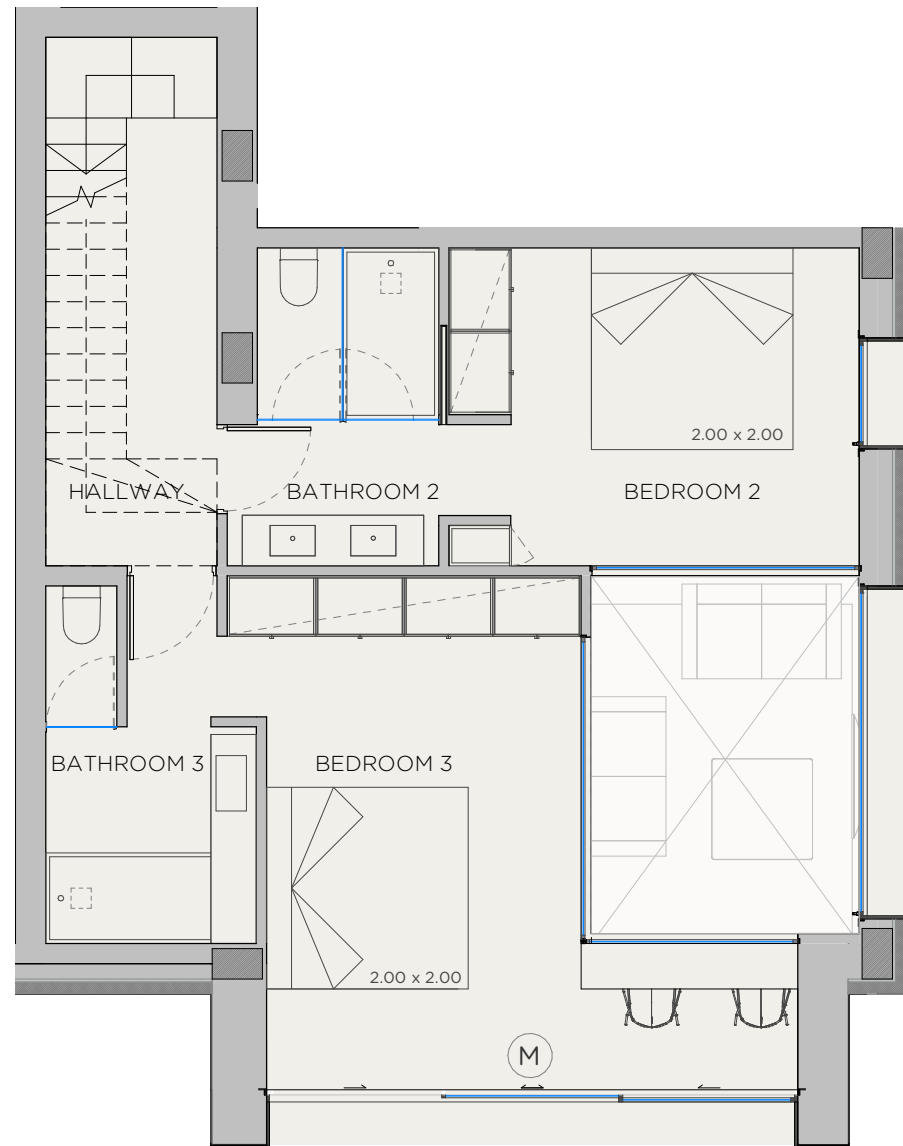
- KITCHEN
- WARDROBES
- SMART CONTROL
- PANORAMA WINDOWS
- SOLAR CONTROL GLASS
- COMMUNITY POOL
- COMMUNITY GYM
- SECURITY SYSTEM
- ART WALL
- BLINDS
- AC/HEATING
- (M) MOTORIZED WINDOW

XOPARQ **CMV**

DATE: 19/10/23

*This document is informative, it has not contractual value until the structure and installations are completely defined

****THIS DOCUMENT INCLUDING USABLE AREAS AND GROSS FLOOR AREAS IS ONLY TEMPORARY AND NOT FINAL DUE TO MUNICIPALY CHANGES AND CONSTRUCTION DESIGN**



V.30 APARTMENT	
INDOOR USABLE FLOOR AREA	118.73
INDOOR GROSS FLOOR AREA	149.53
TERRACE	98.65
GROSS FLOOR AREA	248.18
GFA + COMMON AREAS	299.21

V.30- USABLE FLOOR AREA	
ROOM	SURFACE
LIVING-DINING_KITCHEN	37.20
BEDROOM 1	12.71
BATHROOM 1	5.86
BEDROOM 2	12.71
BATHROOM 2	5.94
BEDROOM 3	20.96
ENTRANCE	8.91
BATHROOM 3	5.53
HALLWAY	8.91
TOTAL USABLE FLOOR AREA	118.73

- KITCHEN
- WARDROBES
- SMART CONTROL
- PANORAMA WINDOWS
- SOLAR CONTROL GLASS
- COMMUNITY POOL
- COMMUNITY GYM
- SECURITY SYSTEM
- ART WALL
- BLINDS
- AC/HEATING
- (M) MOTORIZED WINDOW

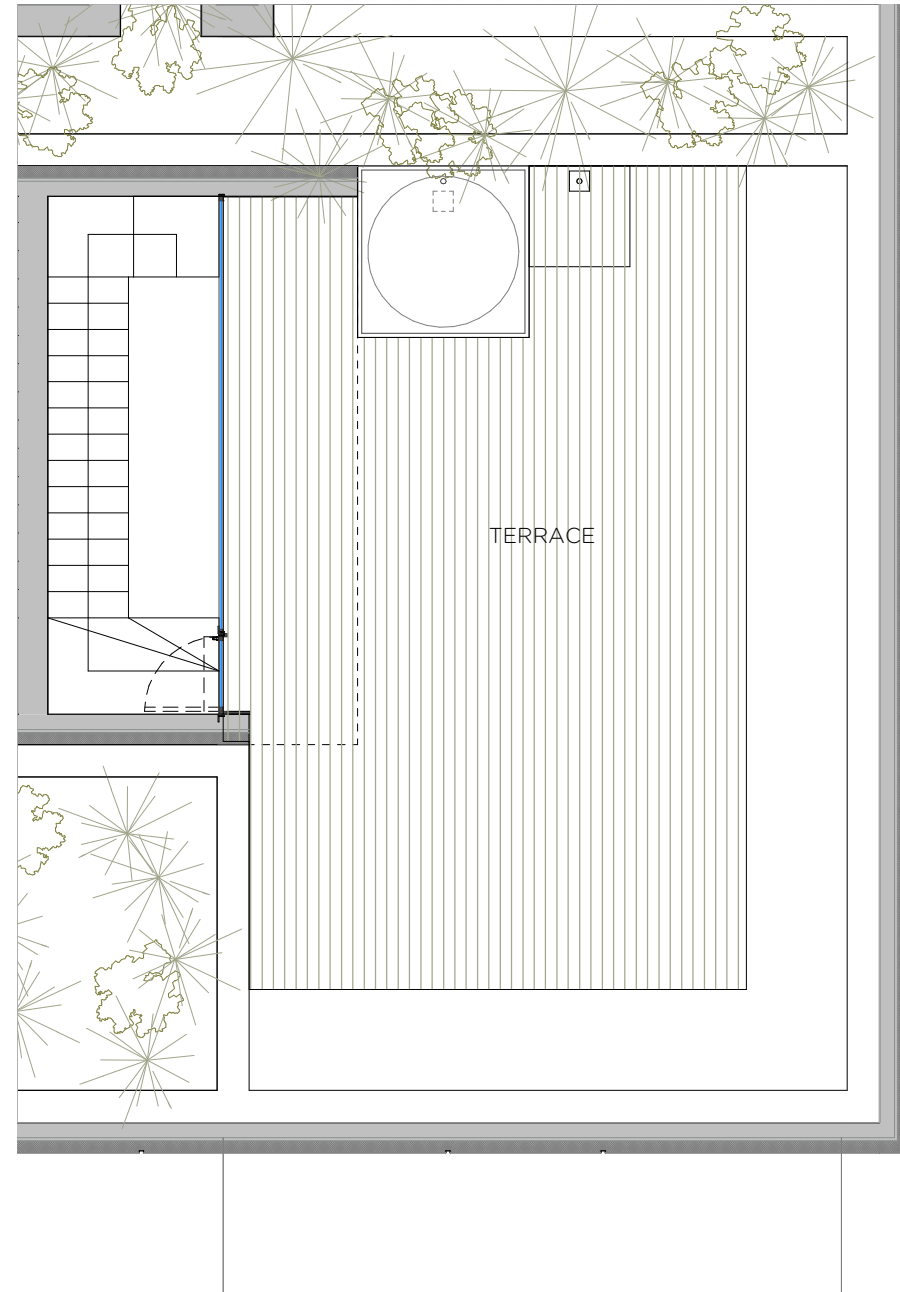
XOPARQ **CMV**

DATE: 19/10/23

*This document is informative, it has not contractual value until the structure and installations are completely defined

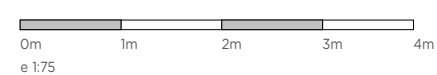
****THIS DOCUMENT INCLUDING USABLE AREAS AND GROSS FLOOR AREAS IS ONLY TEMPORARY AND NOT FINAL DUE TO MUNICIPALY CHANGES AND CONSTRUCTION DESIGN**

XOJAY



- KITCHEN
- WARDROBES
- SMART CONTROL
- PANORAMA WINDOWS
- SOLAR CONTROL GLASS
- COMMUNITY POOL
- COMMUNITY GYM
- SECURITY SYSTEM
- ART WALL
- BLINDS
- AC/HEATING
- (M) MOTORIZED WINDOW

XOPARQ CMV

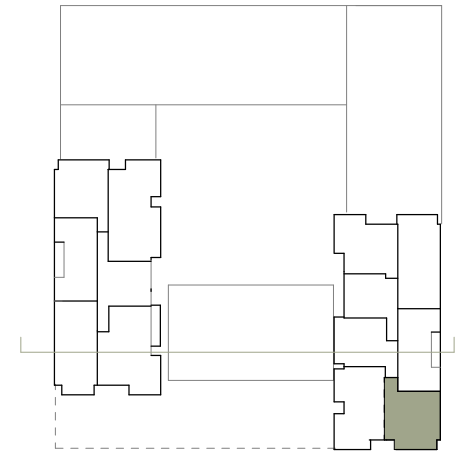
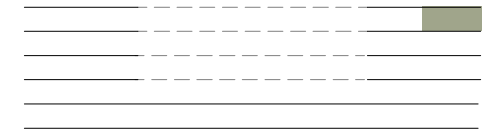


DATE: 19/10/23

*This document is informative, it has not contractual value until the structure and installations are completely defined

****THIS DOCUMENT INCLUDING USABLE AREAS AND GROSS FLOOR AREAS IS ONLY TEMPORARY AND NOT FINAL DUE TO MUNICIPALY CHANGES AND CONSTRUCTION DESIGN**

XOPARQ
The Palma Residences



V.30 APARTMENT

INDOOR USABLE FLOOR AREA	118.73
INDOOR GROSS FLOOR AREA	149.53
TERRACE	98.65
GROSS FLOOR AREA	248.18
GFA + COMMON AREAS	299.21

V.30- USABLE FLOOR AREA

ROOM	SURFACE
LIVING-DINING_KITCHEN	37.20
BEDROOM 1	12.71
BATHROOM 1	5.86
BEDROOM 2	12.71
BATHROOM 2	5.94
BEDROOM 3	20.96
ENTRANCE	8.91
BATHROOM 3	5.53
HALLWAY	8.91
TOTAL USABLE FLOOR AREA	118.73

APARTMENT

3.0