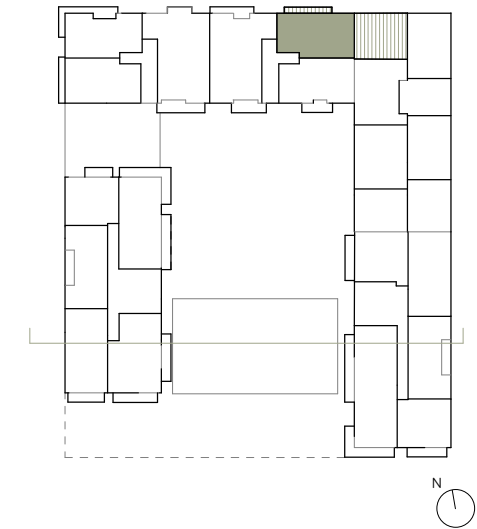
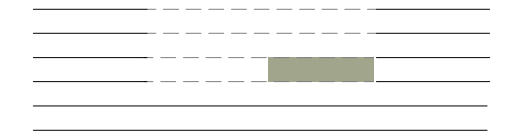
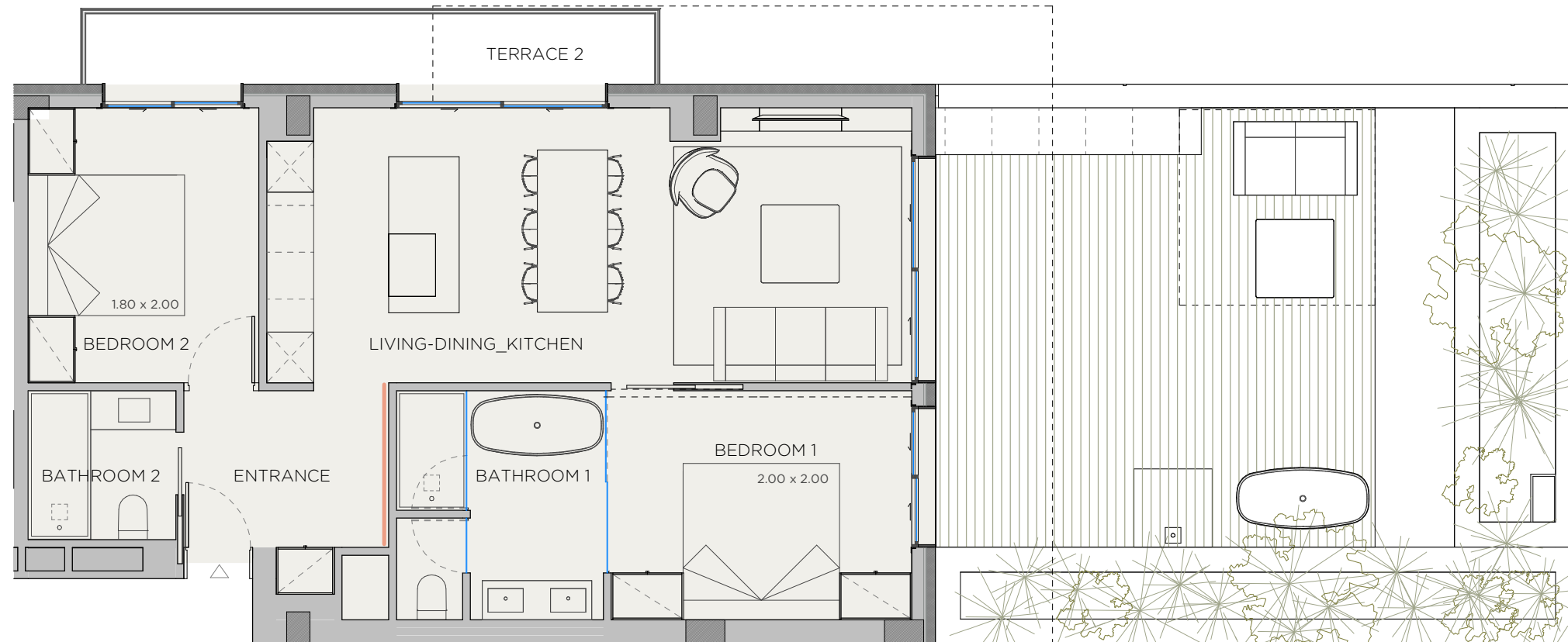


# XOJAY



V.2E APARTMENT	
INDOOR USABLE FLOOR AREA	67.51
INDOOR GROSS FLOOR AREA	81.31
TERRACE 01	58.99
TERRACE 02	6.99
GROSS FLOOR AREA	147.30
GFA + COMMON AREAS	177.59

V.2E- USABLE FLOOR AREA	
ROOM	SURFACE
LIVING-DINING_KITCHEN	28.60
BEDROOM 1	10.77
BATHROOM 1	7.75
BEDROOM 2	10.90
BATHROOM 2	3.79
ENTRANCE	5.70
<b>TOTAL USABLE FLOOR AREA</b>	<b>67.51</b>

- KITCHEN
- WARDROBES
- SMART CONTROL
- PANORAMA WINDOWS
- SOLAR CONTROL GLASS
- COMMUNITY POOL
- COMMUNITY GYM
- SECURITY SYSTEM
- ART WALL
- BLINDS
- AC/HEATING
- (M) MOTORIZED WINDOW

**XOPARQ** **CMV**

DATE: 19/10/23

\*This document is informative, it has not contractual value until the structure and installations are completely defined

**\*\*THIS DOCUMENT INCLUDING USABLE AREAS AND GROSS FLOOR AREAS IS ONLY TEMPORARY AND NOT FINAL DUE TO MUNICIPALY CHANGES AND CONSTRUCTION DESIGN**

# XOPARQ

The Palma Residences

APARTMENT

**2.E**