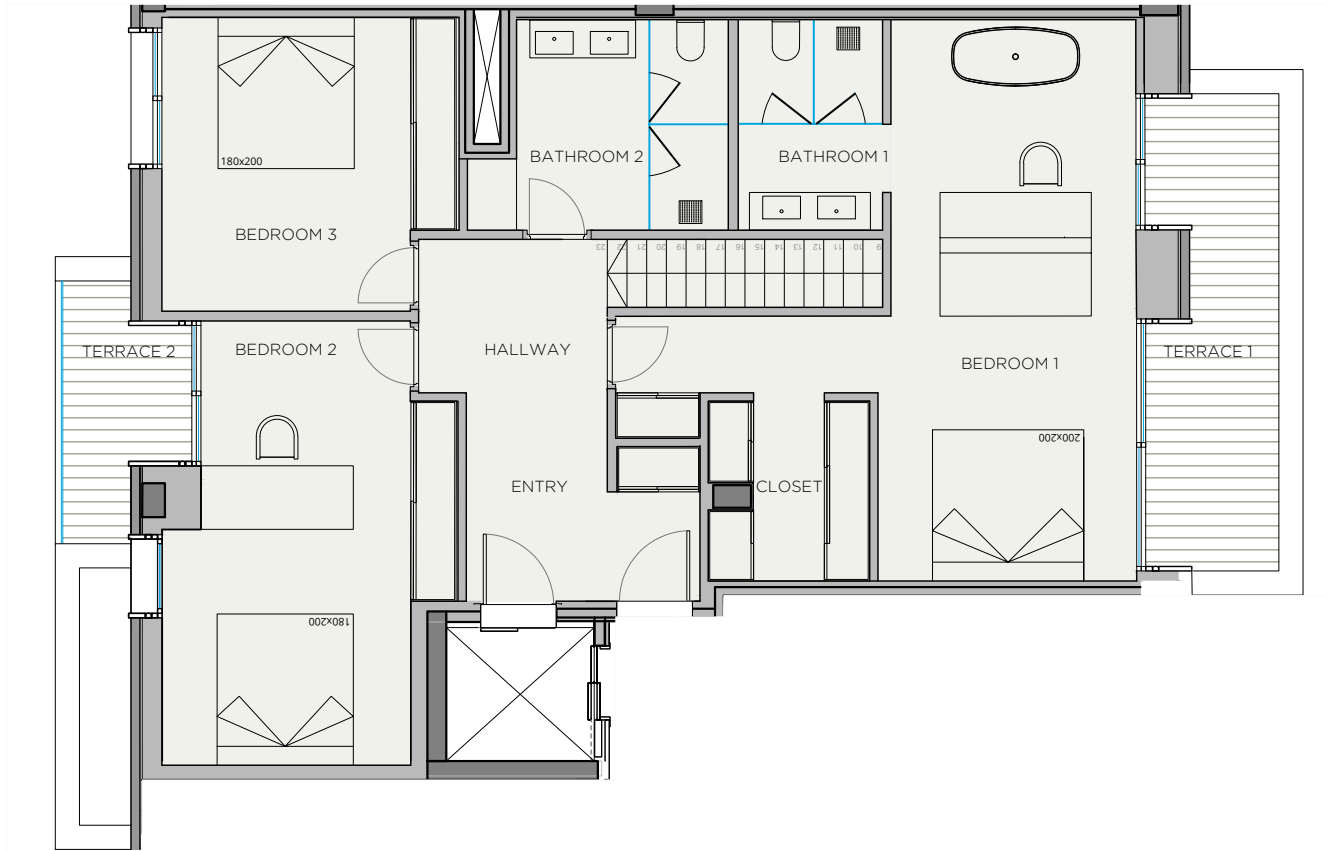
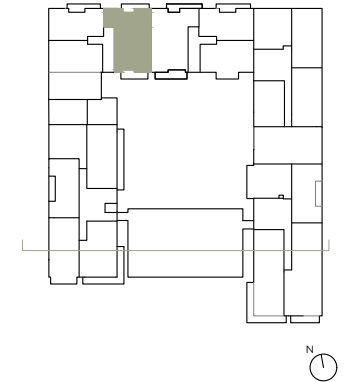
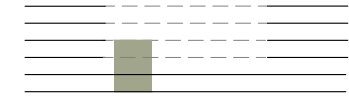


XOJAY



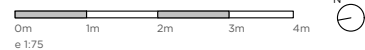
V.1C APARTMENT	
INDOOR USABLE FLOOR AREA	283.86
INDOOR GROSS FLOOR AREA	344.38
TERRACE 01	8.25
TERRACE 02	10.23
TERRACE 03	35.08
GROSS FLOOR AREA	397.94
GFA + COMMON AREAS	479.76

V.1C- USABLE FLOOR AREA	
ROOM	SURFACE
FIRST FLOOR	
ENTRY	7.57
HALLWAY	5.07
BEDROOM 1	31.87
BEDROOM 2	19.65
BEDROOM 3	14.67
BATHROOM 1	6.87
BATHROOM 2	8.51
GROUND FLOOR	
LIVING-DINING_KITCHEN	72.09
PANTRY	2.27
TOILET	2.62
STAIRCASE	11.54
BASEMENT	
PARKING	55.80
STORAGE	38.34
HALLWAY	2.04
STAIRCASE	4.36
TOTAL USABLE FLOOR AREA	283.86

- KITCHEN
- WARDROBES
- SMART CONTROL
- PANORAMA WINDOWS
- SOLAR CONTROL GLASS
- COMMUNITY POOL
- COMMUNITY GYM
- SECURITY SYSTEM
- ART WALL
- BLINDS
- AC/HEATING
- (M)MOTORIZED WINDOW

* FURNITURE IS NOT INCLUDED

XOPARQ



DATE: 25/04/24

*This document is informative, it has not contractual value until the structure and installations are completely defined

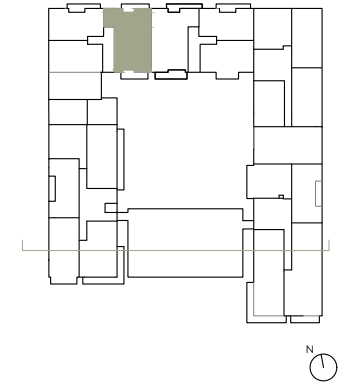
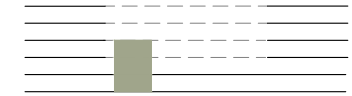
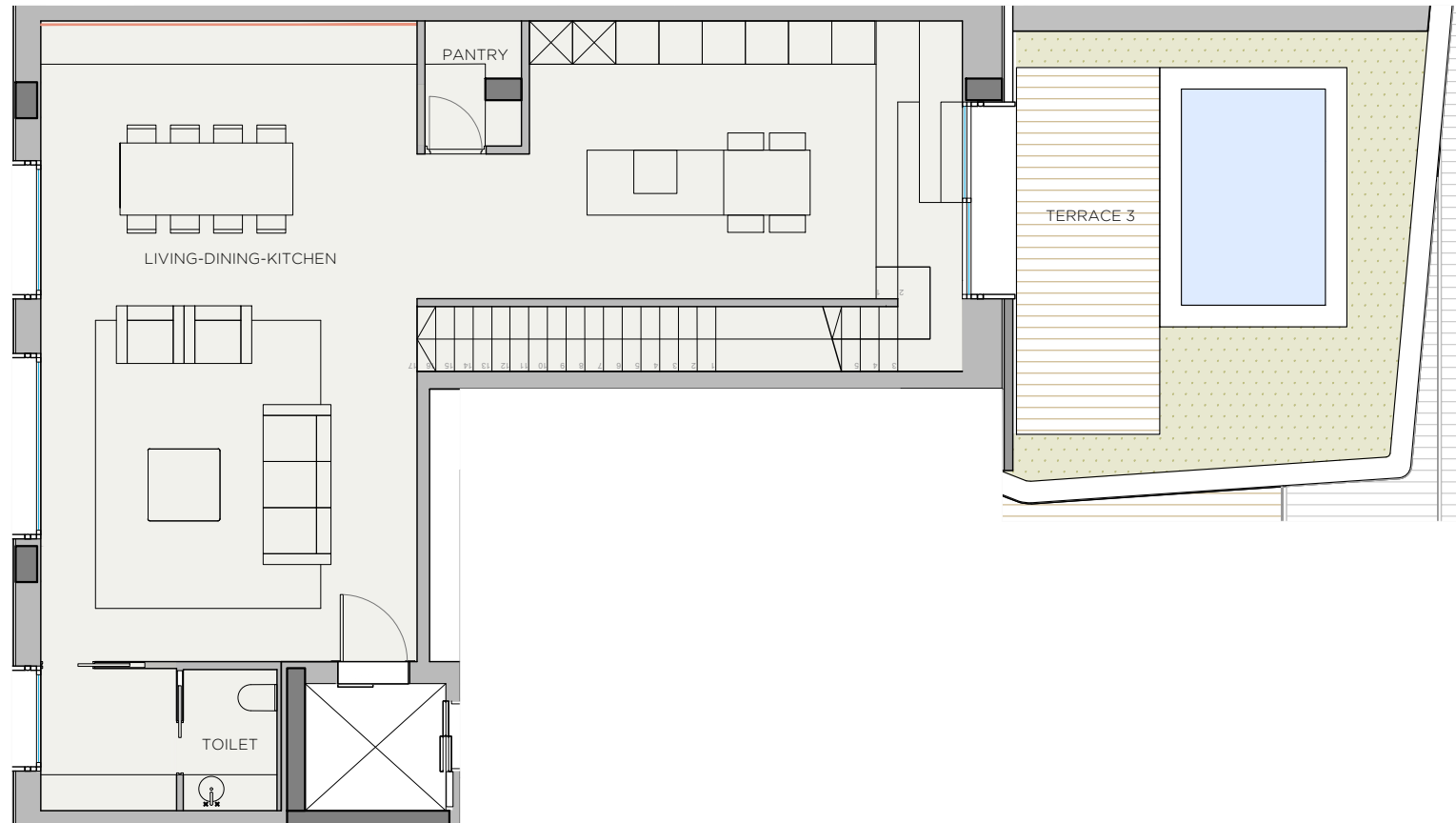
****MEASUREMENTS MAY CHANGE IN THE FURTHER PLANNING PHASE**

*****THIS DOCUMENT, INCLUDING USABLE AREAS AND GROSS FLOOR AREAS, IS ONLY TEMPORARY AND NOT FINAL DUE TO MUNICIPAL CHANGES AND CONSTRUCTION DESIGN**

XOPARQ
The Palma Residences

APARTMENT **1C**

XOJAY



V.I.C APARTMENT	
INDOOR USABLE FLOOR AREA	283.86
INDOOR GROSS FLOOR AREA	344.38
TERRACE 01	8.25
TERRACE 02	10.23
TERRACE 03	35.08
GROSS FLOOR AREA	397.94
GFA + COMMON AREAS	479.76

V.I.C- USABLE FLOOR AREA	
ROOM	SURFACE
FIRST FLOOR	
ENTRY	7.57
HALLWAY	5.07
BEDROOM 1	31.87
BATHROOM 1	6.87
BEDROOM 2	19.65
BATHROOM 2	8.51
BEDROOM 3	14.67
GROUND FLOOR	
LIVING-DINING_KITCHEN	72.09
PANTRY	2.27
TOILET	2.62
STAIRCASE	11.54
BASEMENT	
PARKING	55.80
STORAGE	38.34
HALLWAY	2.04
STAIRCASE	4.36
TOTAL USABLE FLOOR AREA	283.86

XOPARQ



DATE: 25/04/24

*This document is informative, it has not contractual value until the structure and installations are completely defined

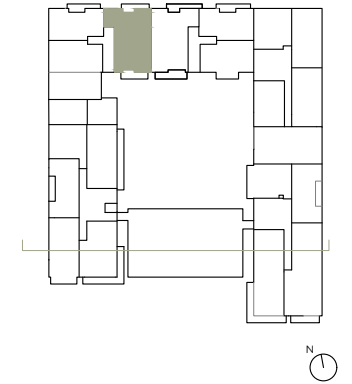
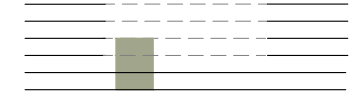
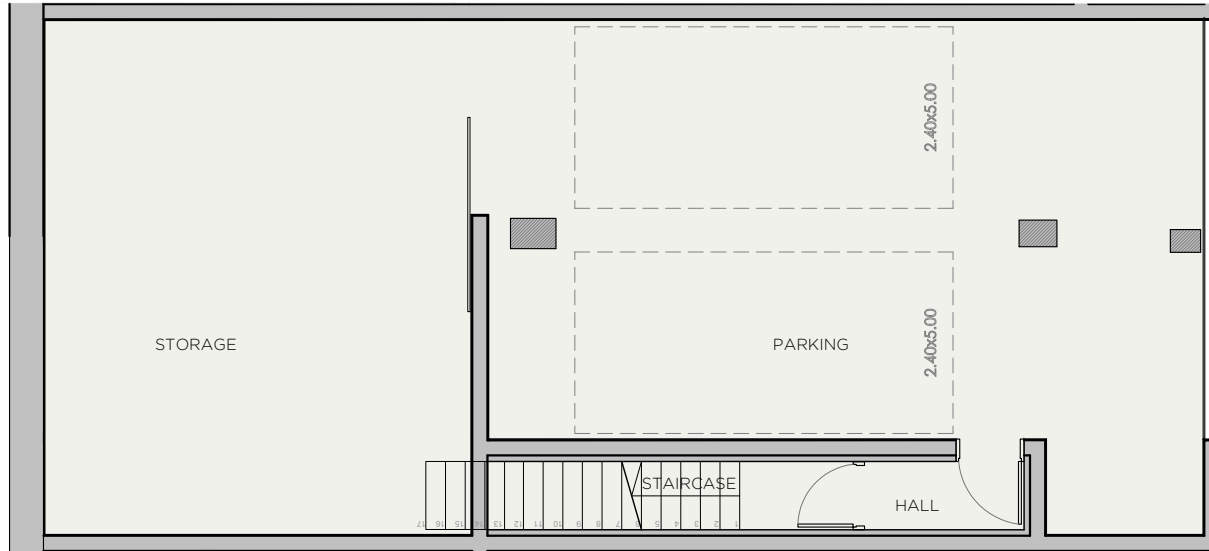
****MEASUREMENTS MAY CHANGE IN THE FURTHER PLANNING PHASE**

*****THIS DOCUMENT, INCLUDING USABLE AREAS AND GROSS FLOOR AREAS, IS ONLY TEMPORARY AND NOT FINAL DUE TO MUNICIPALY CHANGES AND CONSTRUCTION DESIGN**

XOPARQ
The Palma Residences

APARTMENT **1C**

XOJAY



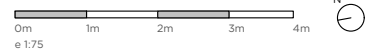
V.I.C APARTMENT	
INDOOR USABLE FLOOR AREA	283.86
INDOOR GROSS FLOOR AREA	344.38
TERRACE 01	8.25
TERRACE 02	10.23
TERRACE 03	35.08
GROSS FLOOR AREA	397.94
GFA + COMMON AREAS	479.76

V.I.C- USABLE FLOOR AREA	
ROOM	SURFACE
FIRST FLOOR	
ENTRY	7.57
HALLWAY	5.07
BEDROOM 1	31.87
BATHROOM 1	6.87
BEDROOM 2	19.65
BATHROOM 2	8.51
BEDROOM 3	14.67
GROUND FLOOR	
LIVING-DINING_KITCHEN	72.09
PANTRY	2.27
TOILET	2.62
STAIRCASE	11.54
BASEMENT	
PARKING	55.80
STORAGE	38.34
HALLWAY	2.04
STAIRCASE	4.36
TOTAL USABLE FLOOR AREA	283.86

- KITCHEN
- WARDROBES
- SMART CONTROL
- PANORAMA WINDOWS
- SOLAR CONTROL GLASS
- COMMUNITY POOL
- COMMUNITY GYM
- SECURITY SYSTEM
- ART WALL
- BLINDS
- AC/HEATING
- (M)MOTORIZED WINDOW

* FURNITURE IS NOT INCLUDED

XOPARQ



DATE: 25/04/24

*This document is informative, it has not contractual value until the structure and installations are completely defined

****MEASUREMENTS MAY CHANGE IN THE FURTHER PLANNING PHASE**

*****THIS DOCUMENT, INCLUDING USABLE AREAS AND GROSS FLOOR AREAS, IS ONLY TEMPORARY AND NOT FINAL DUE TO MUNICIPAL CHANGES AND CONSTRUCTION DESIGN**

XOPARQ
The Palma Residences

APARTMENT **1C**