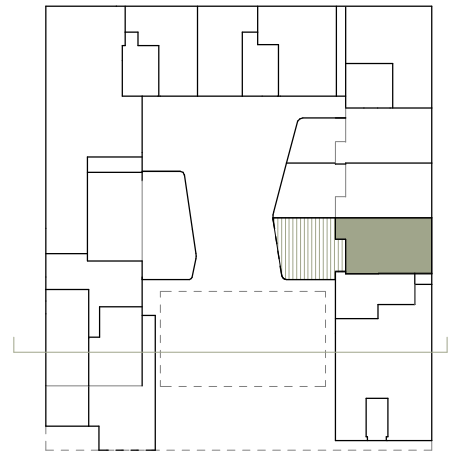
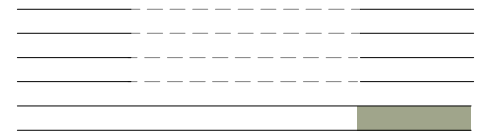
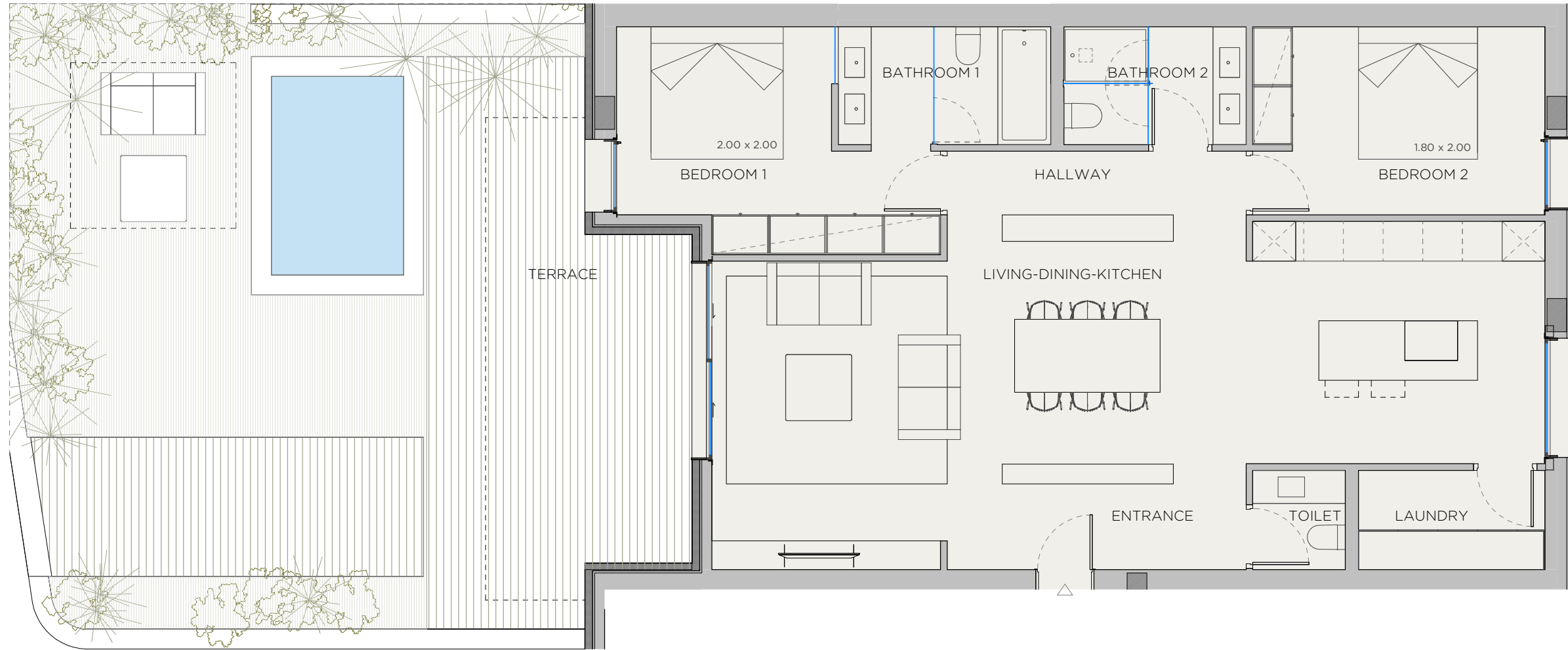


XOJAY



V.0M APARTMENT	
INDOOR USABLE FLOOR AREA	103.89
INDOOR GROSS FLOOR AREA	121.67
TERRACE	94.04
GROSS FLOOR AREA	215.70
GFA + COMMON AREAS	260.05

V.0M- USABLE FLOOR AREA	
ROOM	SURFACE
LIVING-DINING-KITCHEN	49.87
BEDROOM 1	12.89
BATHROOM 1	5.81
BEDROOM 2	12.49
LAUNDRY	4.23
BATHROOM 2	4.75
TOILET	2.10
HALLWAY	4.34
ENTRANCE	7.40
TOTAL USABLE FLOOR AREA	103.89

- KITCHEN
- WARDROBES
- SMART CONTROL
- PANORAMA WINDOWS
- SOLAR CONTROL GLASS
- COMMUNITY POOL
- COMMUNITY GYM
- SECURITY SYSTEM
- ART WALL
- BLINDS
- AC/HEATING
- (M) MOTORIZED WINDOW

XOPARQ **CMV**

DATE: 14/07/23

*This document is informative, it has not contractual value until the structure and installations are completely defined

****THIS DOCUMENT INCLUDING USABLE AREAS AND GROSS FLOOR AREAS IS ONLY TEMPORARY AND NOT FINAL DUE TO MUNICIPALY CHANGES AND CONSTRUCTION DESIGN**

XOPARQ

The Palma Residences

APARTMENT

0.M