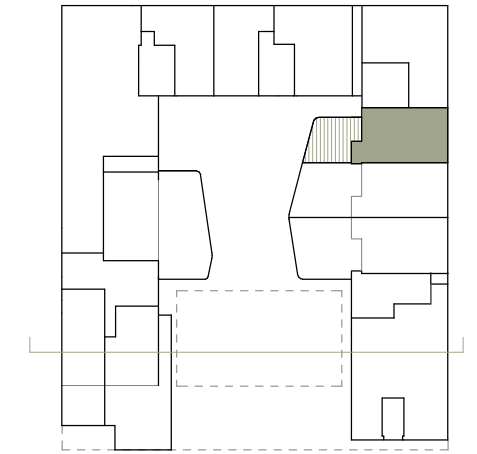
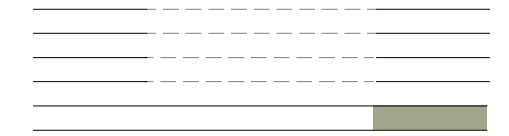
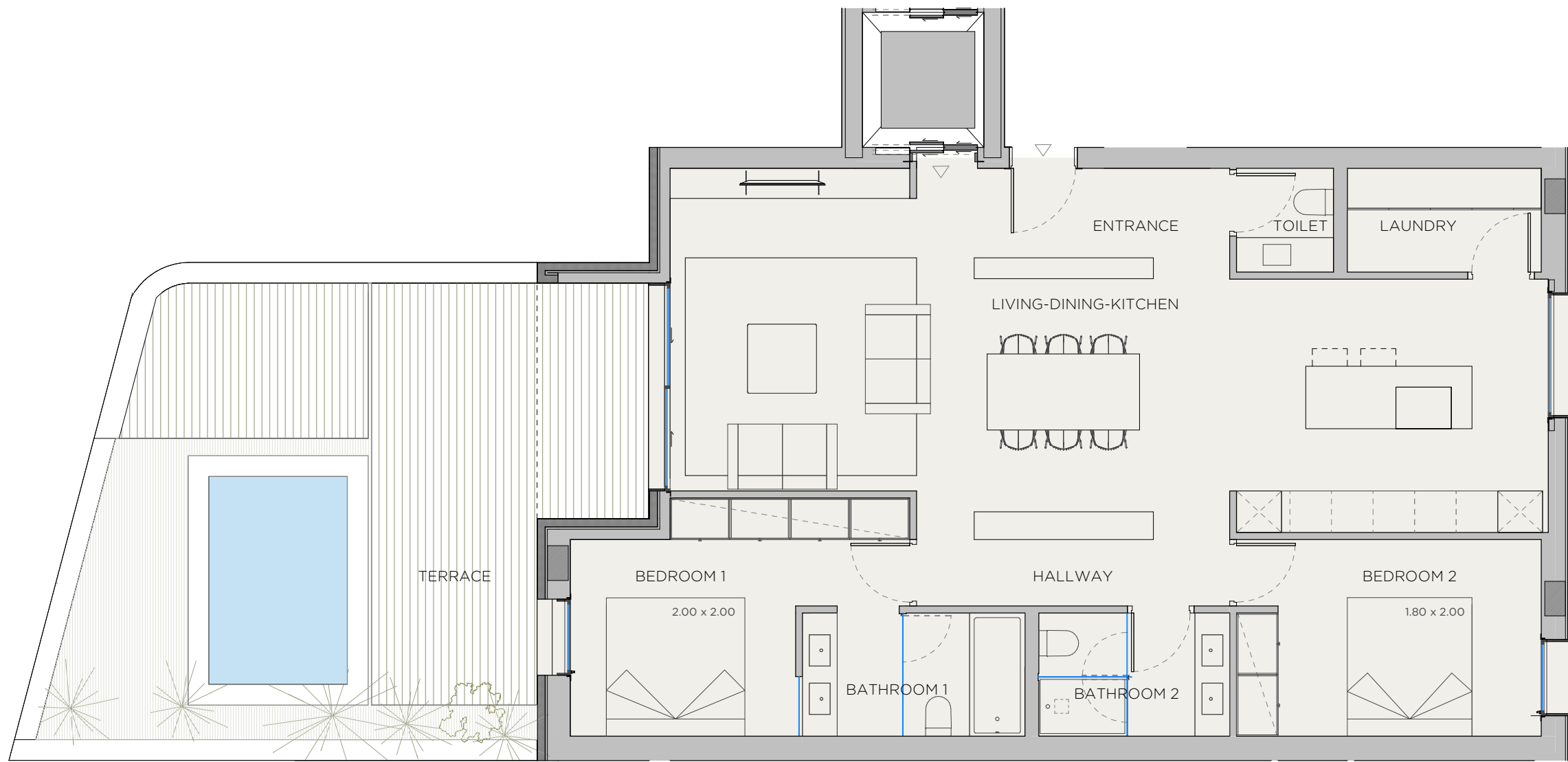


# XOJAY



V.01 APARTMENT	
INDOOR USABLE FLOOR AREA	103.88
INDOOR GROSS FLOOR AREA	119.92
TERRACE 01	52.77
GROSS FLOOR AREA	172.69
GFA + COMMON AREAS	208.19

V.01- USABLE FLOOR AREA	
ROOM	SURFACE
LIVING-DINING-KITCHEN	49.98
BEDROOM 1	13.00
BATHROOM 1	5.72
BEDROOM 2	12.44
LAUNDRY	4.20
BATHROOM 2	4.90
TOILET	2.10
HALLWAY	4.04
ENTRANCE	7.50
<b>TOTAL USABLE FLOOR AREA</b>	<b>103.88</b>

- KITCHEN
- WARDROBES
- SMART CONTROL
- PANORAMA WINDOWS
- SOLAR CONTROL GLASS
- COMMUNITY POOL
- COMMUNITY GYM
- SECURITY SYSTEM
- ART WALL
- BLINDS
- AC/HEATING
- (M) MOTORIZED WINDOW

**XOPARQ** **CMV**

DATE: 14/07/23

\*This document is informative, it has not contractual value until the structure and installations are completely defined

**\*\*THIS DOCUMENT INCLUDING USABLE AREAS AND GROSS FLOOR AREAS IS ONLY TEMPORARY AND NOT FINAL DUE TO MUNICIPALY CHANGES AND CONSTRUCTION DESIGN**

# XOPARQ

The Palma Residences

APARTMENT

**0.1**