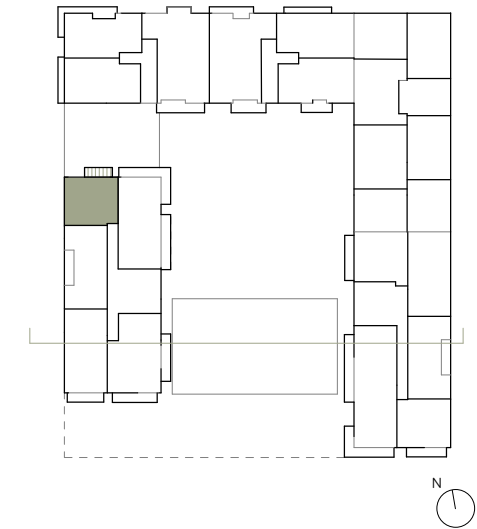
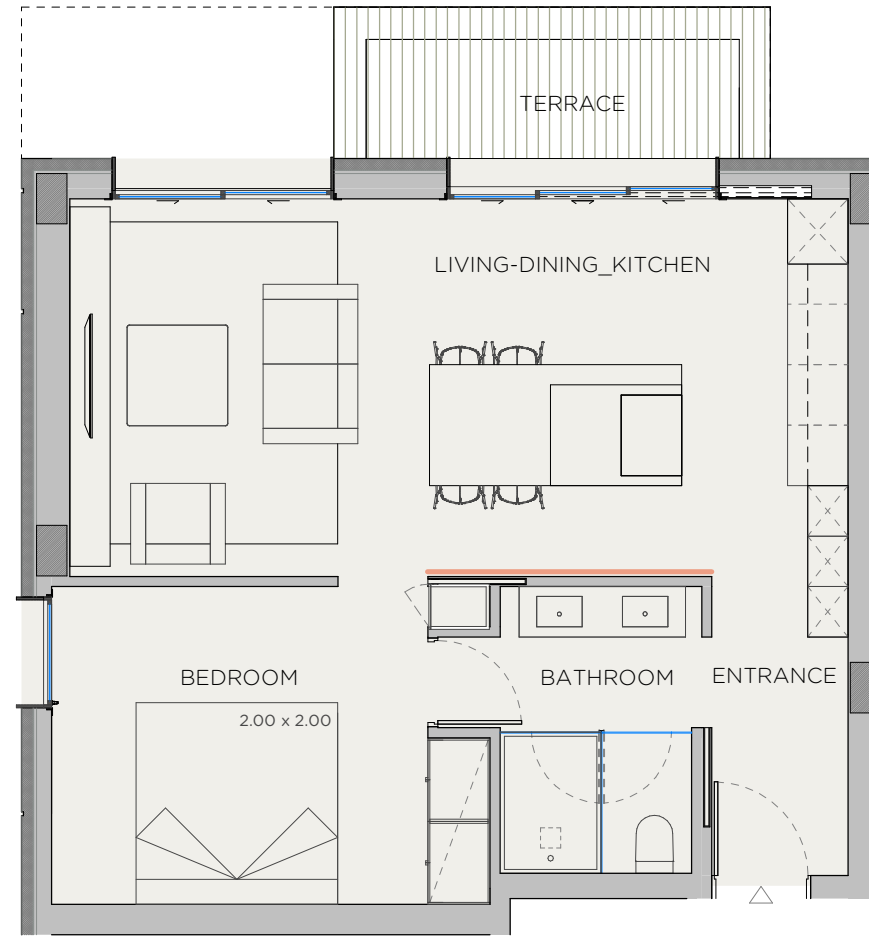


# XOJAY



V.2T APARTMENT	
INDOOR USABLE FLOOR AREA	51.93
INDOOR GROSS FLOOR AREA	62.14
TERRACE	6.50
GROSS FLOOR AREA	68.64
GFA + COMMON AREAS	82.75

V.2T- USABLE FLOOR AREA	
ROOM	SURFACE
LIVING-DINING_KITCHEN	28.92
BEDROOM	13.04
BATHROOM	5.97
ENTRANCE	4.01
TOTAL USABLE FLOOR AREA	51.93

- KITCHEN
- WARDROBES
- SMART CONTROL
- PANORAMA WINDOWS
- SOLAR CONTROL GLASS
- COMMUNITY POOL
- COMMUNITY GYM
- SECURITY SYSTEM
- ART WALL
- BLINDS
- AC/HEATING
- (M) MOTORIZED WINDOW

**XOPARQ** **CWV**

0m 1m 2m 3m 4m  
e 1:75

DATE: 19/10/23

\*This document is informative, it has not contractual value until the structure and installations are completely defined

**\*\*THIS DOCUMENT INCLUDING USABLE AREAS AND GROSS FLOOR AREAS IS ONLY TEMPORARY AND NOT FINAL DUE TO MUNICIPALY CHANGES AND CONSTRUCTION DESIGN**

# XOPARQ

The Palma Residences

APARTMENT

2.T