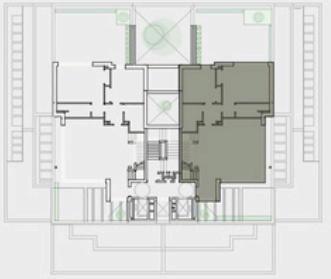
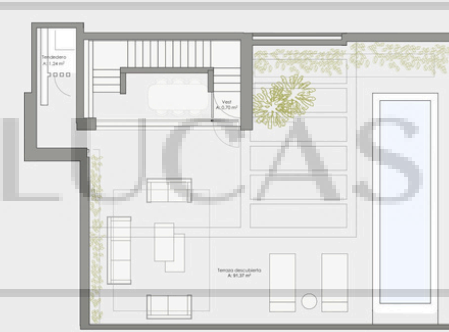
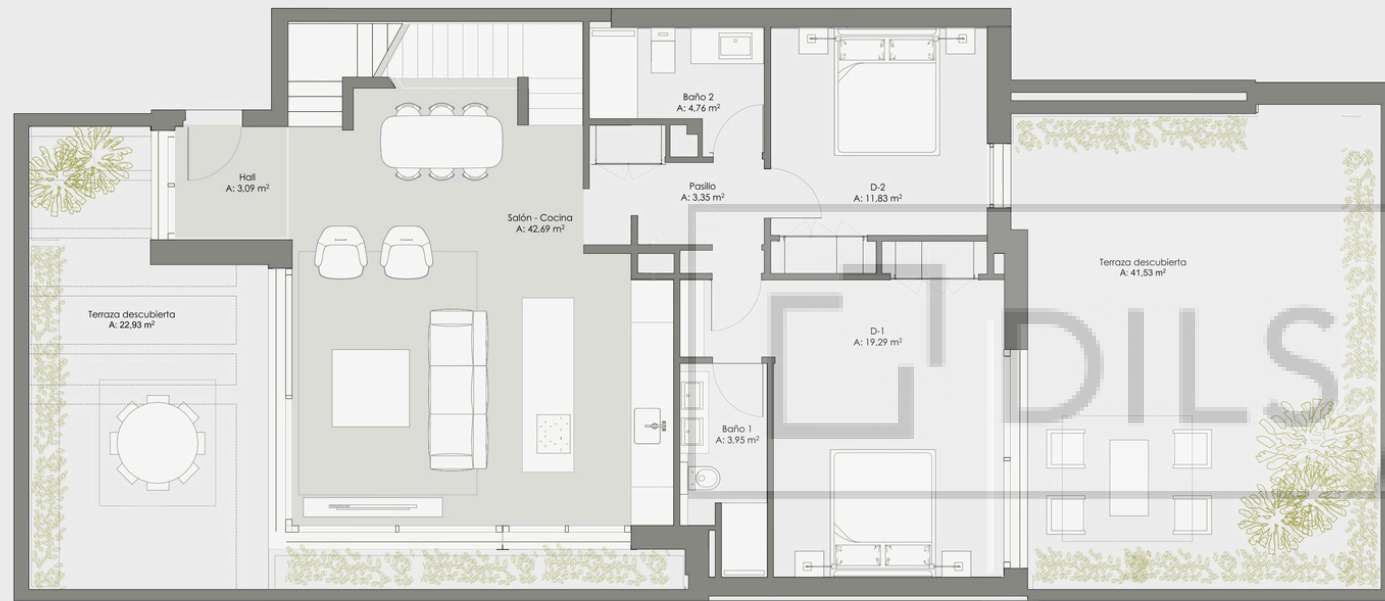
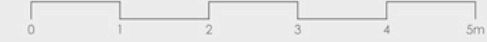


Planta
Ático

Vivienda
B



Escala gráfica

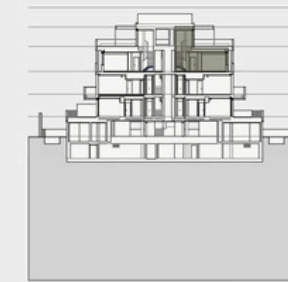


Especificaciones técnicas

Dormitorios	2	Trastero	1
C. Baño	2	Plaza de garaje	2

Superficies (m²)

Sup. construida*	107,47 m ²
Sup. construida + áreas comunes	137,61 m ²
Terrazas	174,12 m ²



-