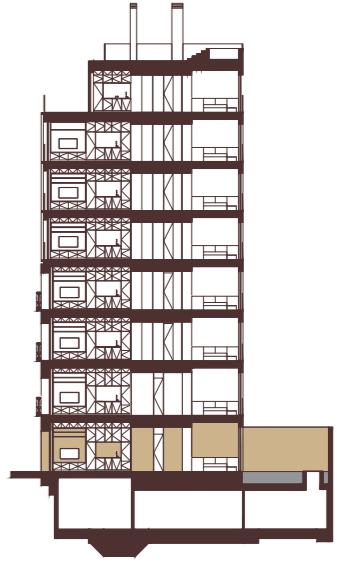
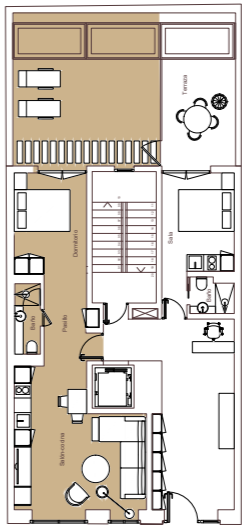
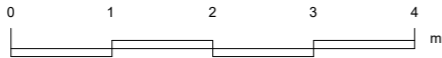
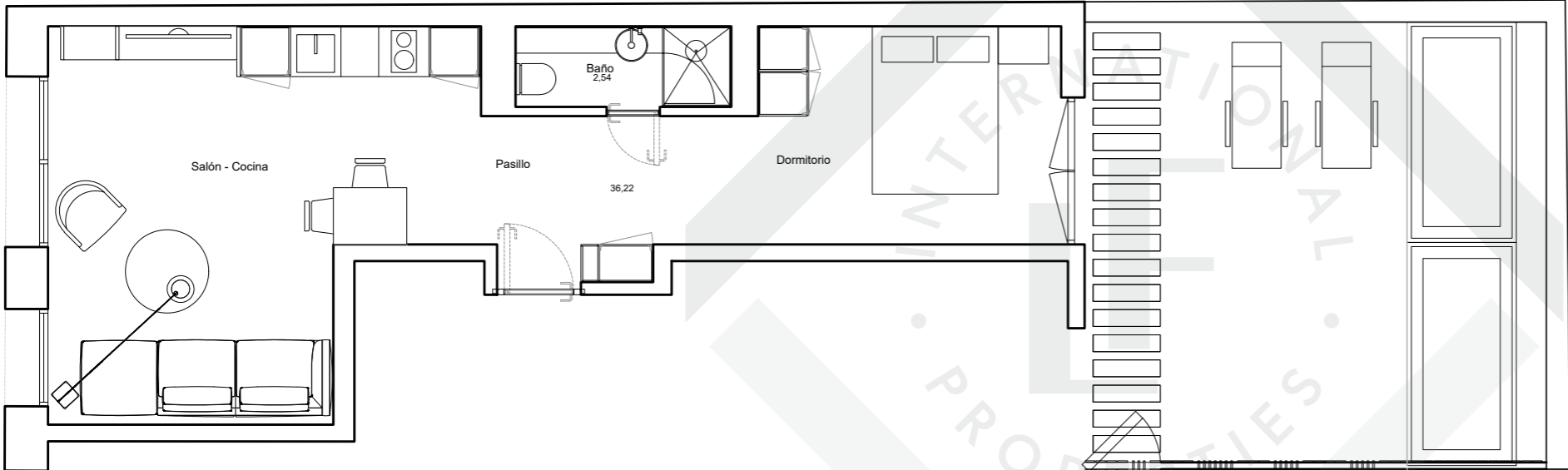


PLANTA BAJA / BAJO A

C | Santa Engracia



Especificaciones Técnicas

- Dormitorio: 1
- Baño: 1
- Salón: 1
- Terraza: 1

Superficies (M2)

- Construida: 48.07
- Construida + ZZCC: 73.23
- Exterior: 31.89
- Total: 105.12

By: