

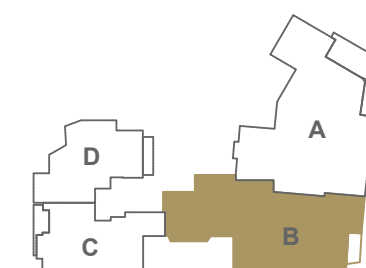
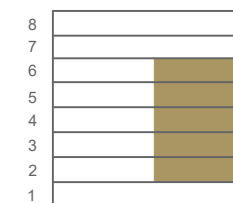
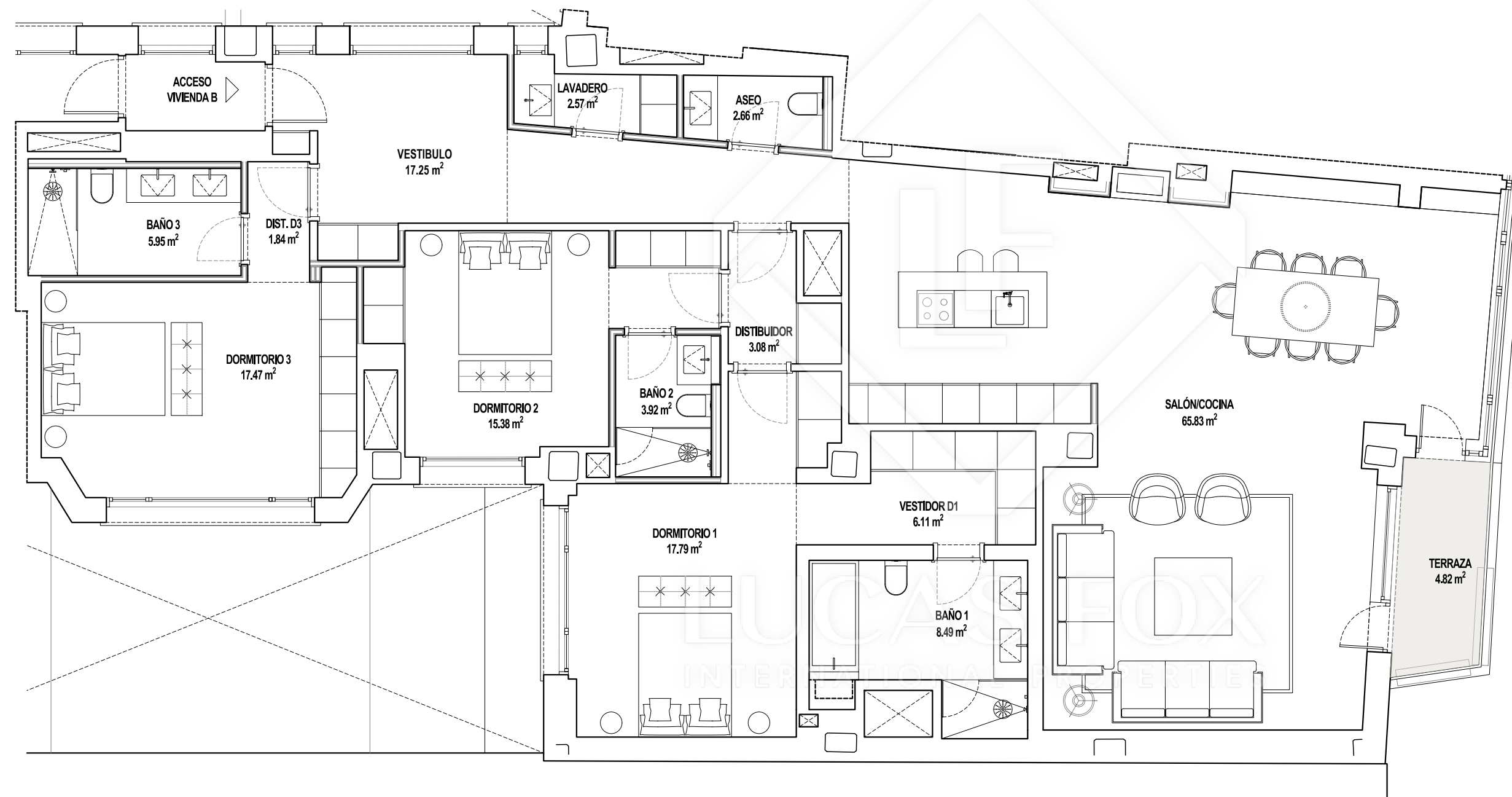
# P. TIPO

## VIVIENDA B | 5 UDS.

### SUPERFICIES CONSTRUIDAS

VIVIENDA	25.10 m <sup>2</sup>
TERRAZA	5.70 m <sup>2</sup>
ZONAS COMUNES	55.79 m <sup>2</sup>

**TOTAL** 266.59 m<sup>2</sup>



Ubicación de la tipología en planta