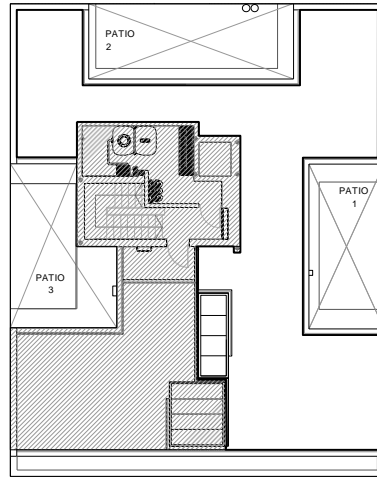
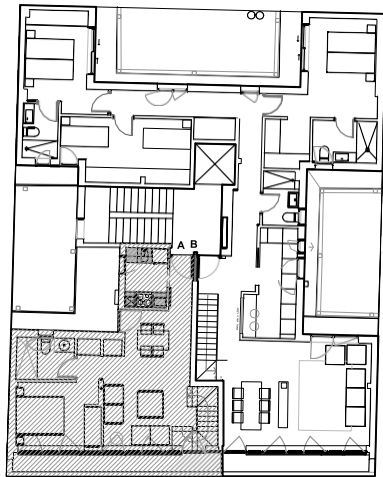


VIVIENDA B - PLANTA SEXTA

SUPERFICIES

Sup útil total	102.97m ²
Sup construida	128.88m ²
Sup terraza + t. en cubierta	99.01m ²



VIVIENDA B - PLANTA SEXTA

SUPERFICIES

Sup útil total	102.97m ²
Sup construida	128.88m ²
Sup terraza	
+ t. en cubierta	99.01m ²

