



FLOOR 1

GROSS INTERNAL AREA
 FLOOR 1 176.3 m² FLOOR 2 183.7 m²
 TOTAL : 359.9 m²

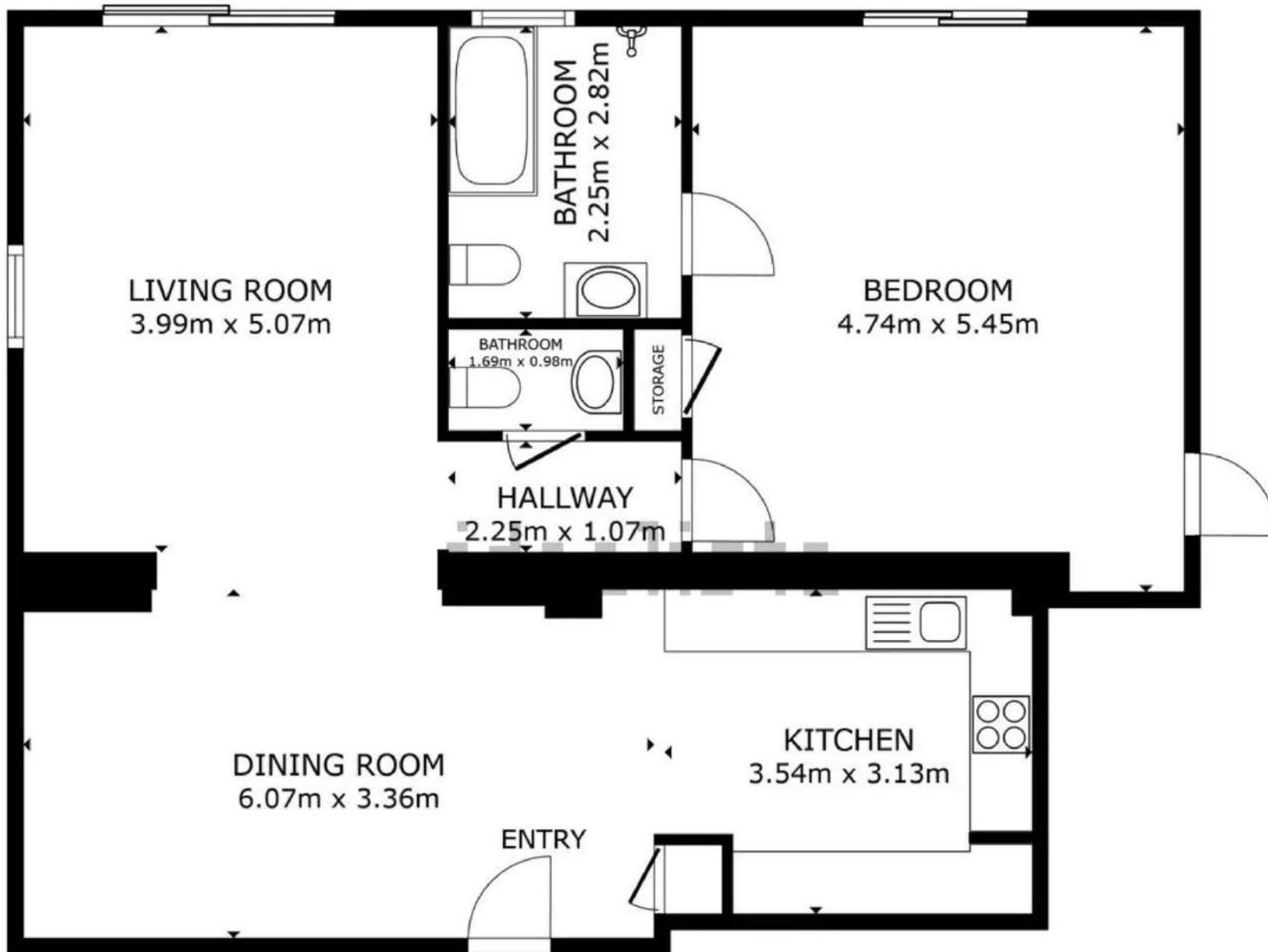
SIZES AND DIMENSIONS ARE APPROXIMATE, ACTUAL MAY VARY.



FLOOR 2

GROSS INTERNAL AREA
 FLOOR 1 176.3 m² FLOOR 2 183.7 m²
 TOTAL : 359.9 m²

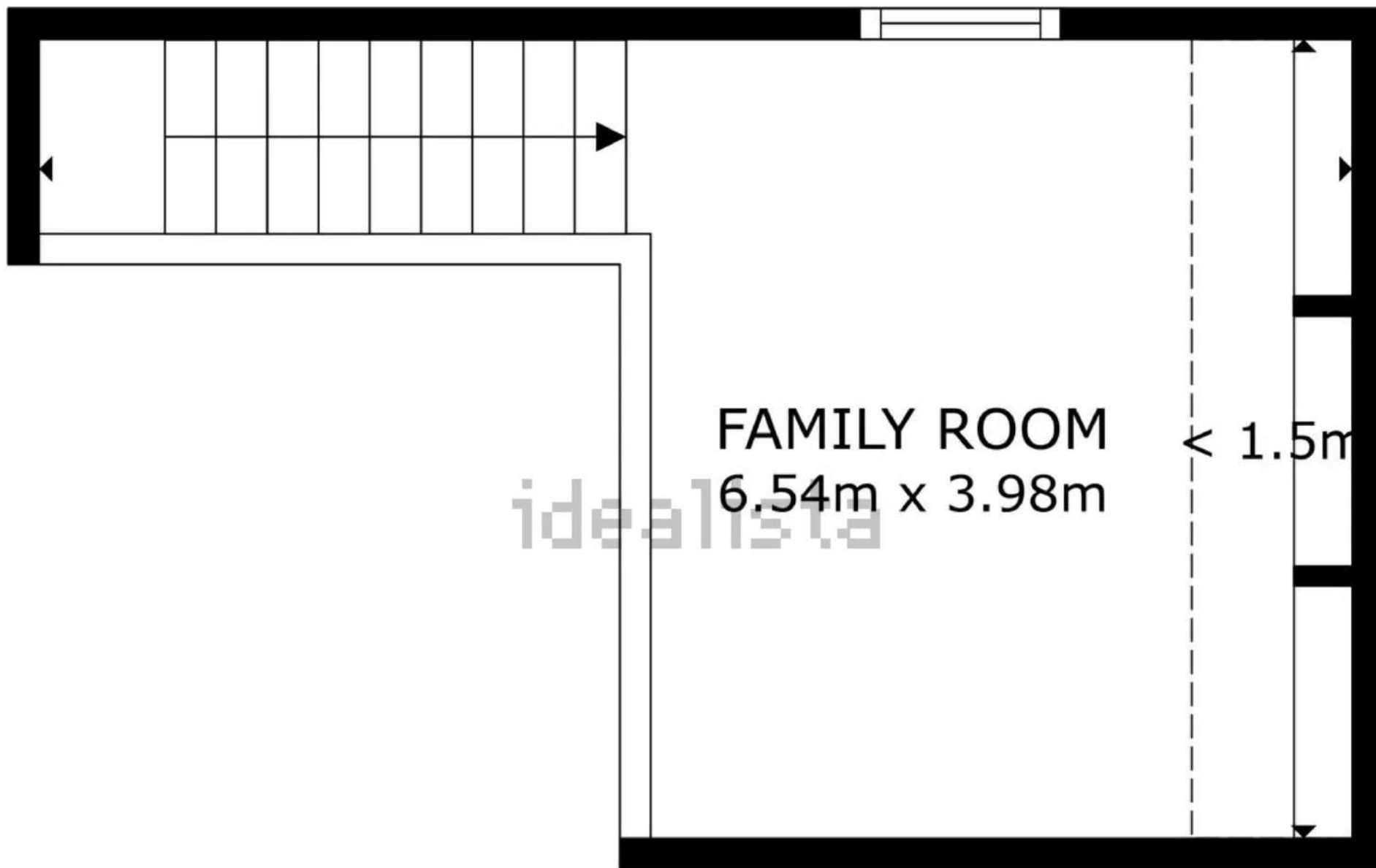
SIZES AND DIMENSIONS ARE APPROXIMATE, ACTUAL MAY VARY.



FLOOR PLAN

GROSS INTERNAL AREA
 FLOOR PLAN 92.5 m²
 TOTAL : 92.5 m²

SIZES AND DIMENSIONS ARE APPROXIMATE, ACTUAL MAY VARY.



FAMILY ROOM
6.54m x 3.98m

< 1.5m

FLOOR PLAN

GROSS INTERNAL AREA
FLOOR PLAN 13.7 m²
EXCLUDED AREAS : REDUCED HEADROOM 3.2 m²
TOTAL : 13.7 m²
SIZES AND DIMENSIONS ARE APPROXIMATE, ACTUAL MAY VARY.