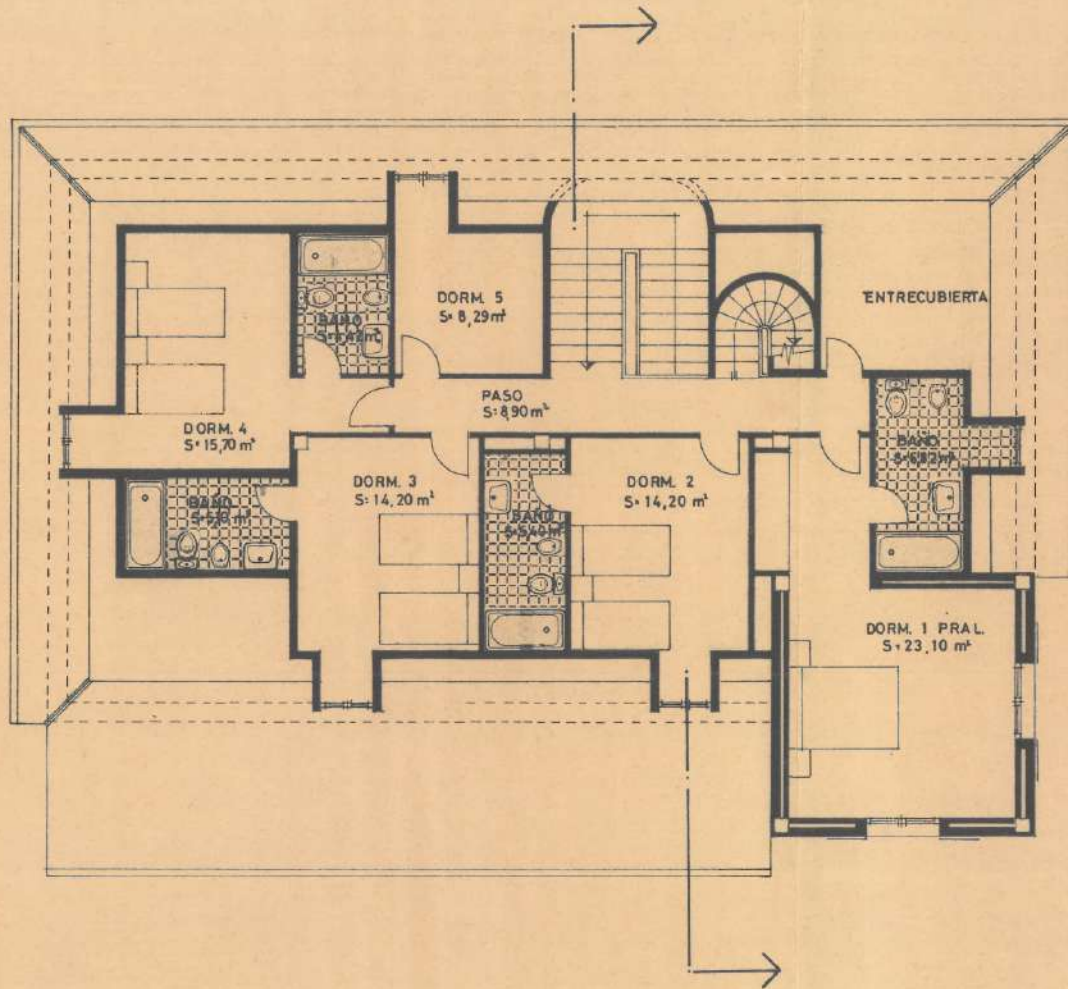
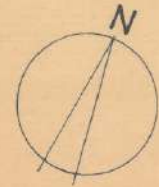
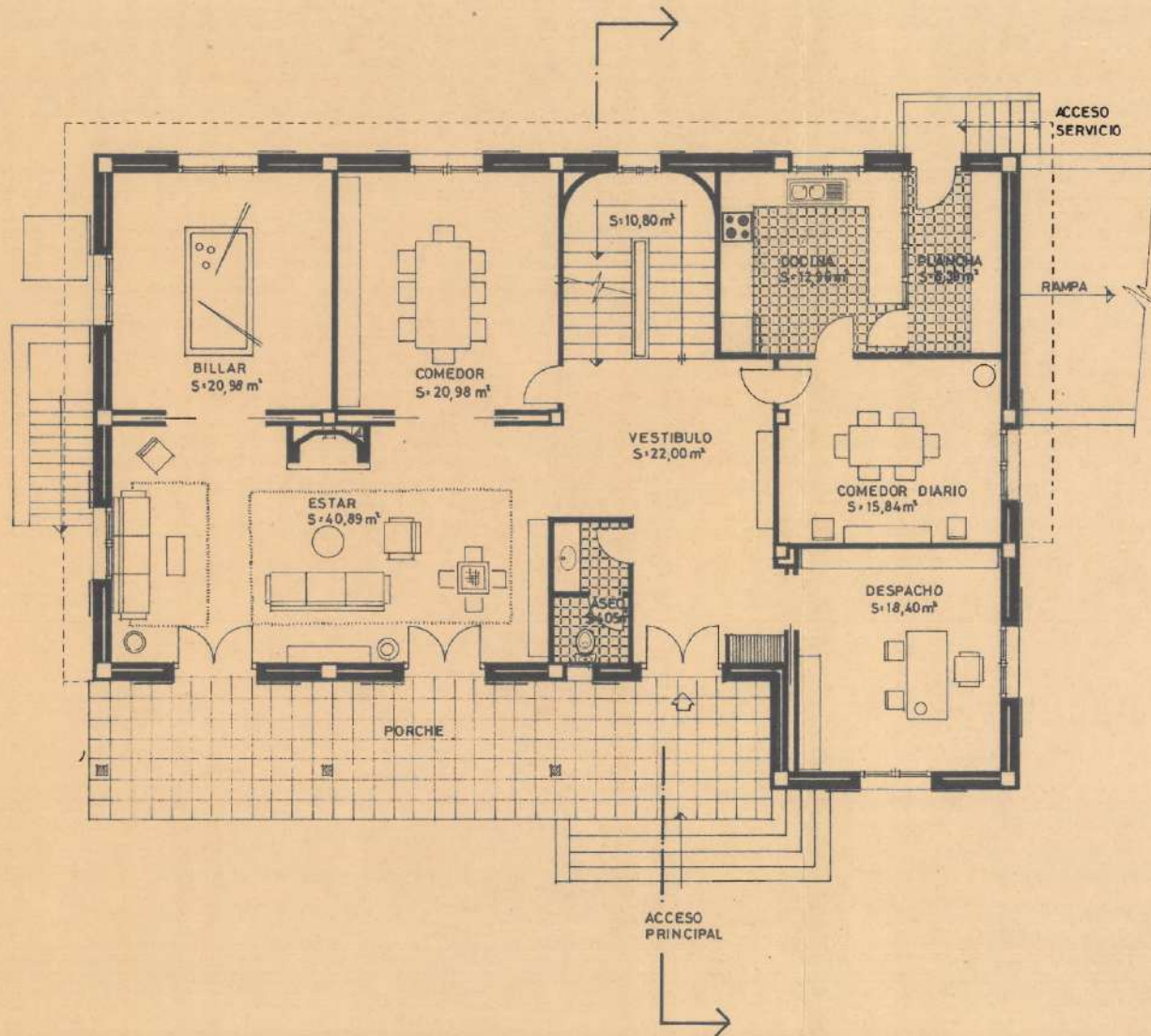


seccion
escala 1:100
vitoria - febrero - 1978
el arquitecto



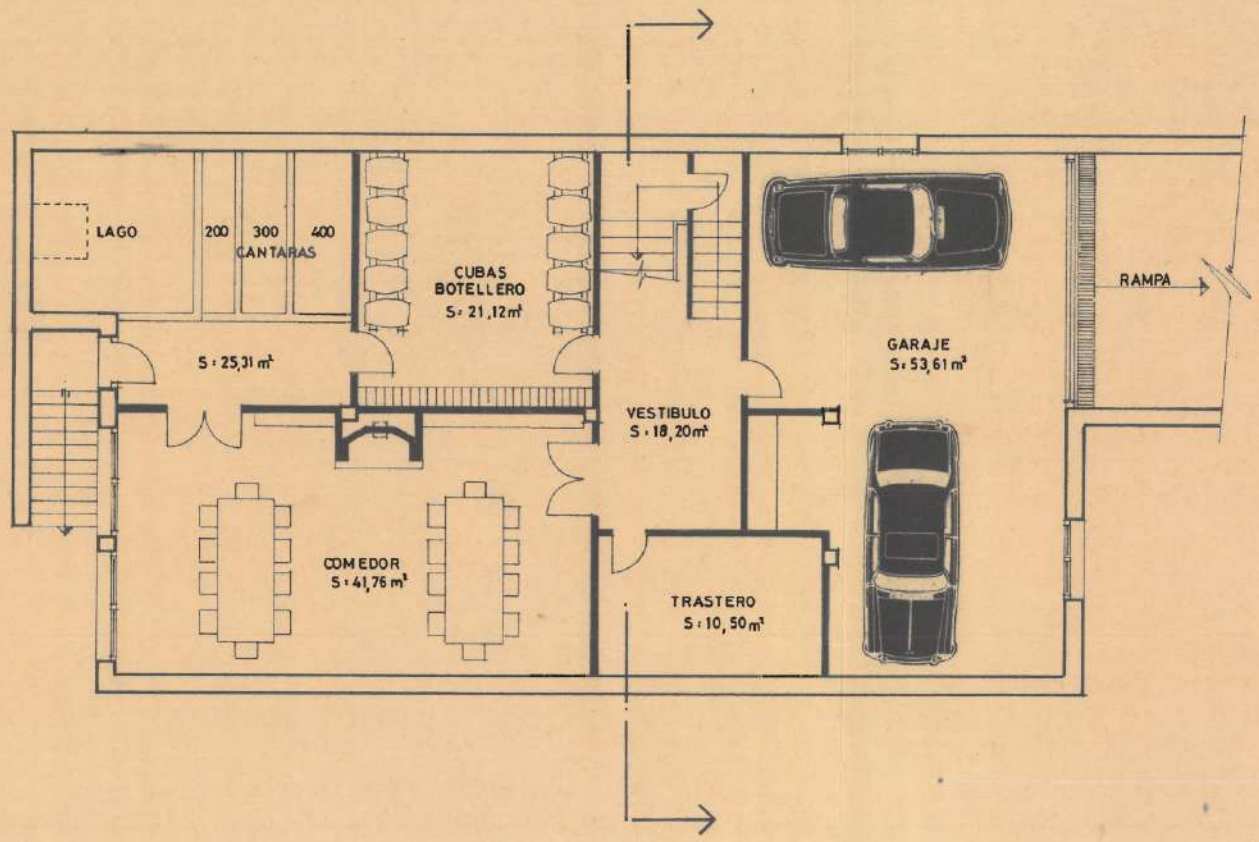
SUP. CONSTRUIDA 130,25 m²
SUP. UTIL 108,83 m²

planta primera
escala 1:100
vitoria - febrero - 1978
el arquitecto



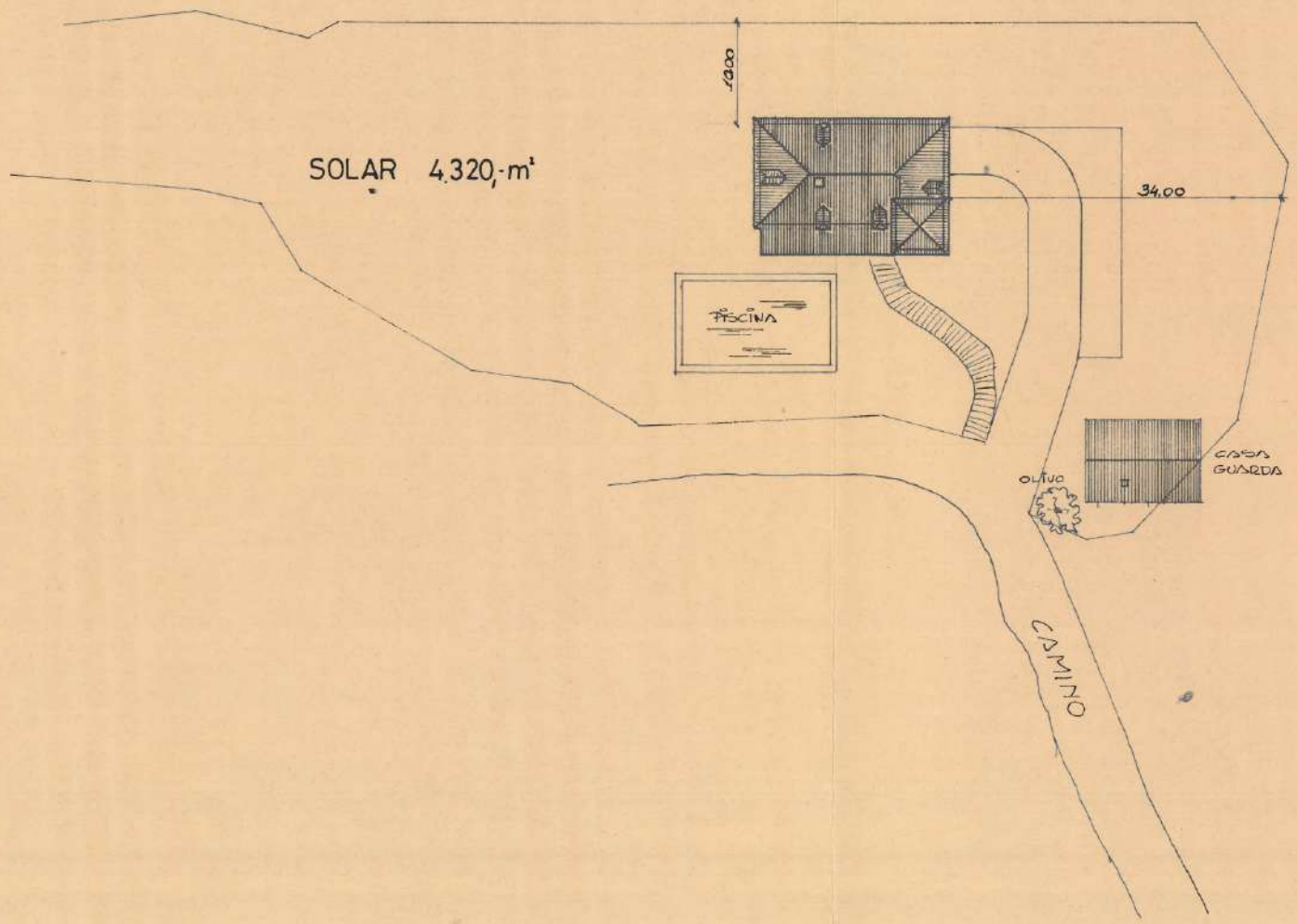
SUP. CONSTRUIDA 201,86m²
SUP. UTIL 173,29m²

planta baja
escala 1:100
vitoria - febrero - 1978
el arquitecto

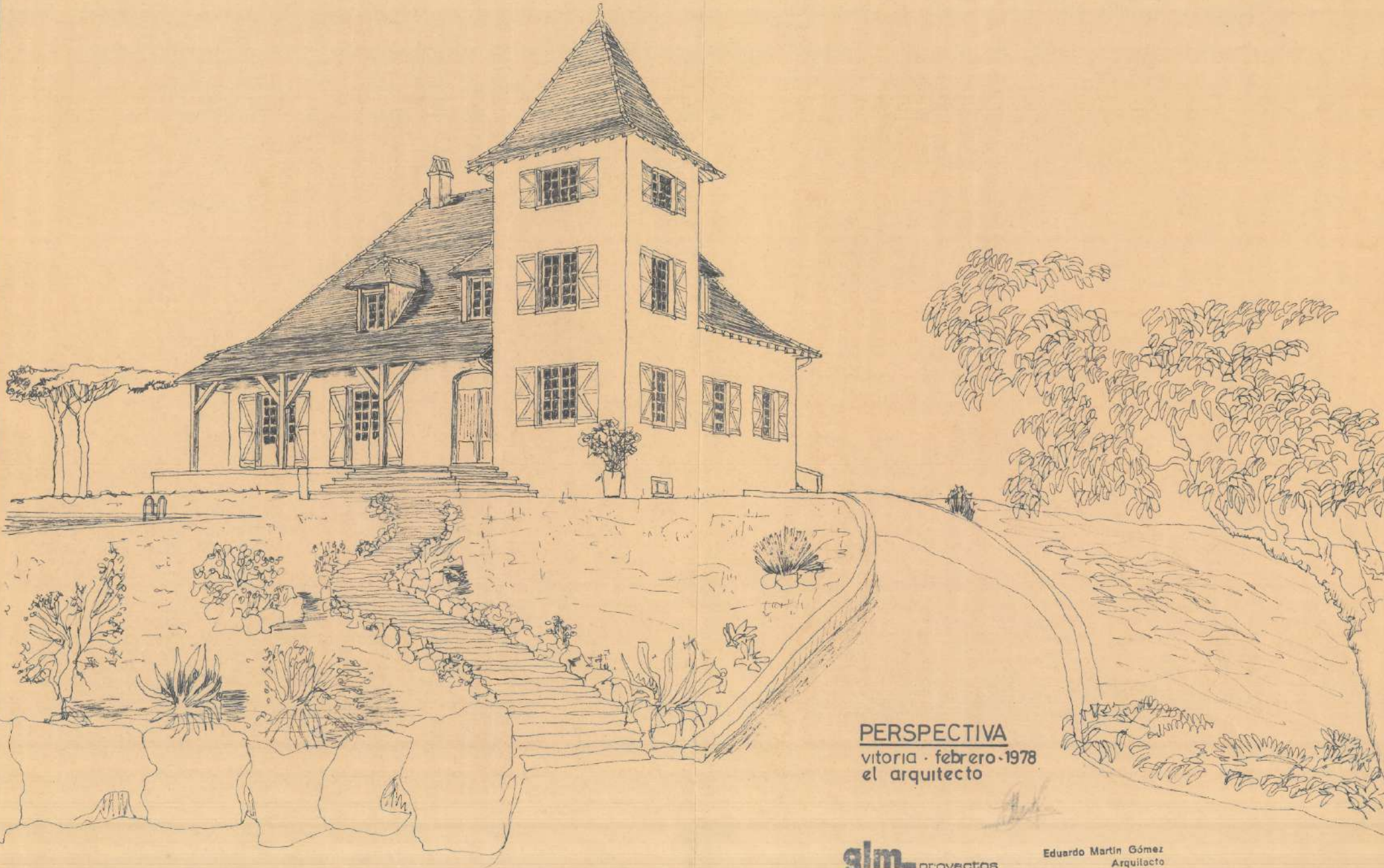


SUP. CONSTRUIDA 196,91 m²
SUP. UTIL 170,05 m²

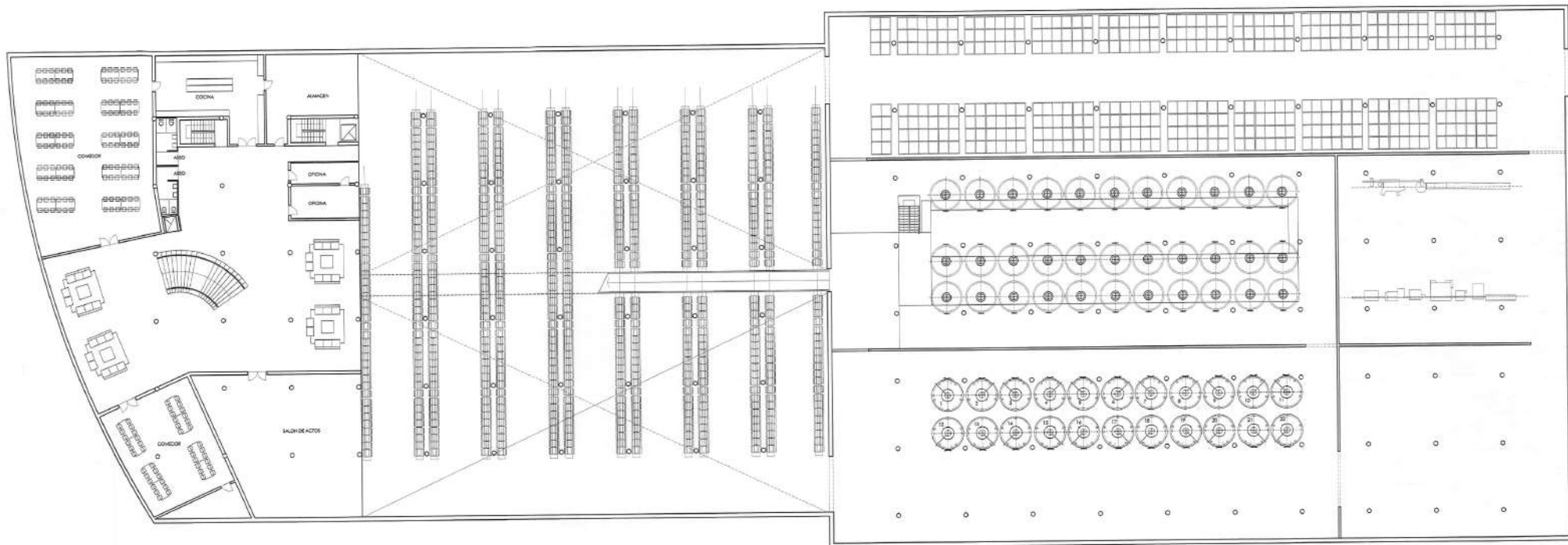
planta de sotano
escala 1:100
vitoria - febrero - 1978

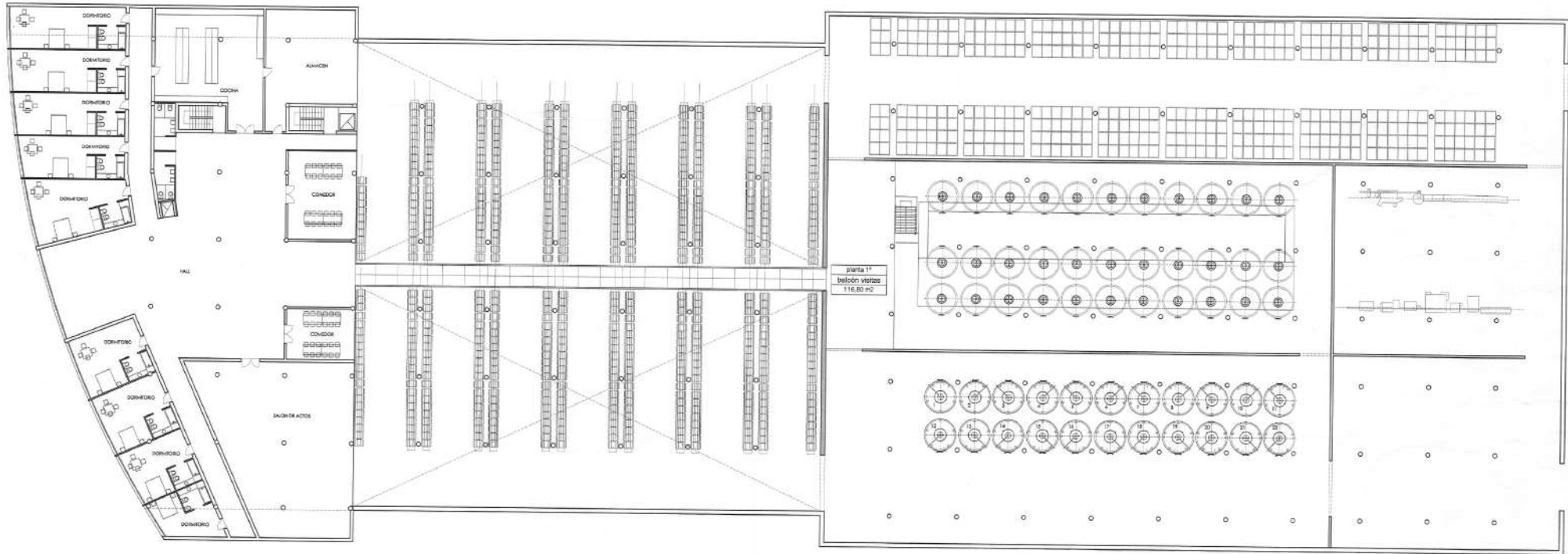


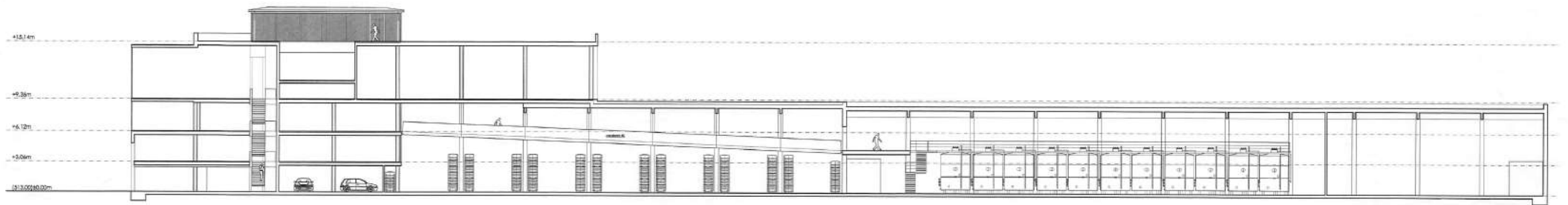
emplazamiento
escala 1:500
vitoria - febrero - 1978
el arquitecto



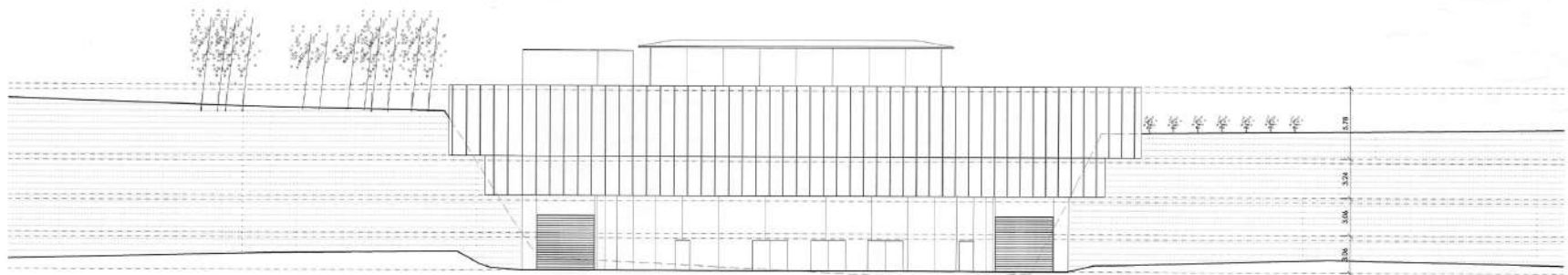
PERSPECTIVA
vitoria · febrero · 1978
el arquitecto







SECCION LONGITUDINAL TIPO



ALZADO FRONTAL escala 1/200