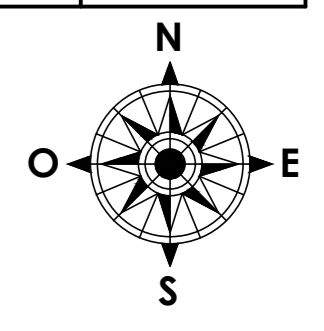


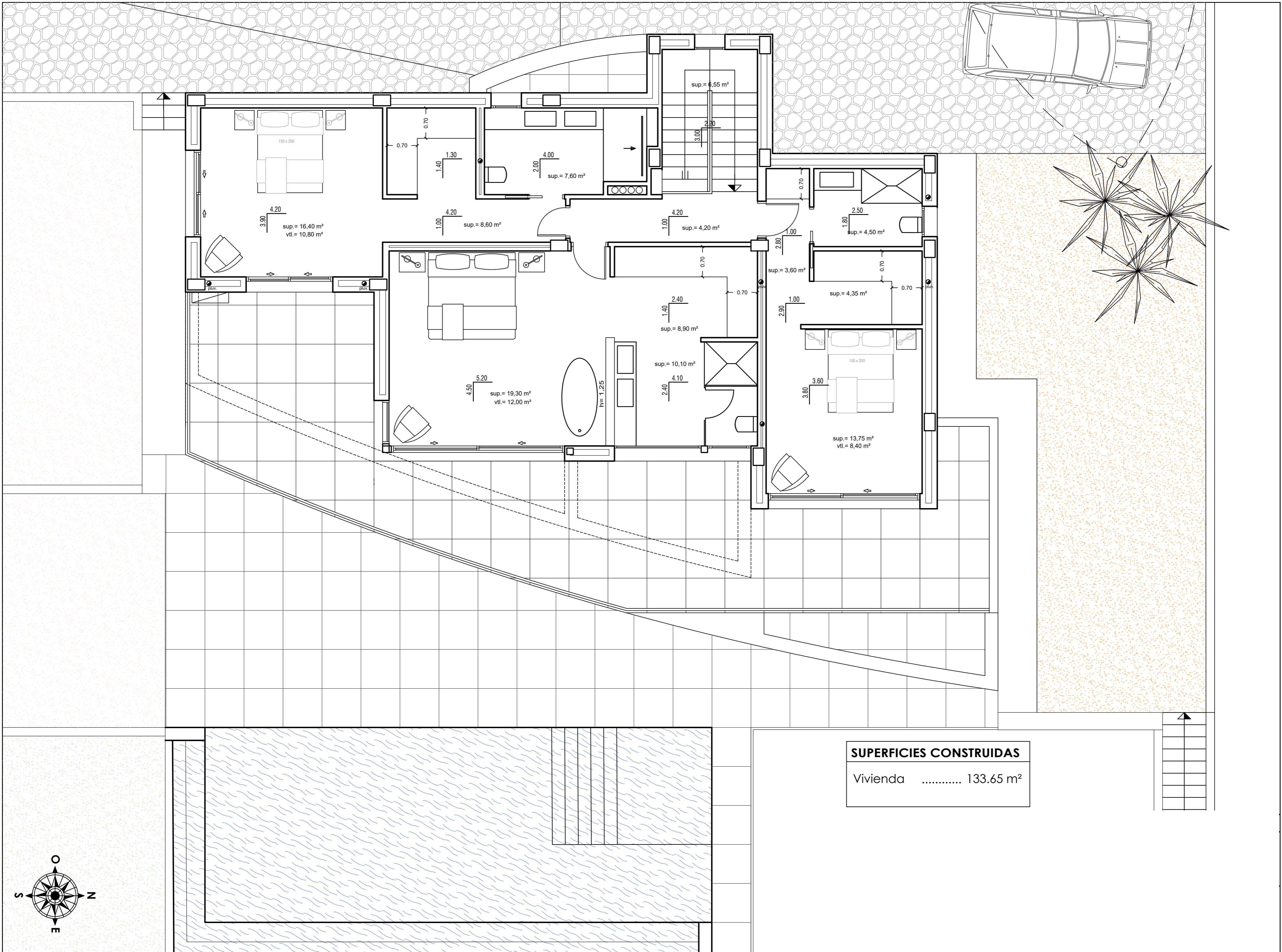
ZONA
COMUN
390,90 m²

APLICACION DE ORDENANZAS	PROYECTO	PGOU
EDIFICACION PRINCIPAL:		
SUP. NETA PARCELA	1003,00 m ²	≥ 800,00 m ²
SUP. OCUPADA	196,40 m ²	≤ 250,75 m ²
OCUPACIÓN	19,58 %	≤ 25,00 %
SUP. CONSTRUIDA	311,90 m ²	≤ 319,95 m ²
EDIFICABILIDAD	0,311 m ² /m ²	≤ 0,319 m ² /m ²
EDIFICACION AUXILIAR:		
barbacoa	20,00 m ²	
Depuradora piscina	8,30 m ²	
Pergola aparcamiento	16,50 m ²	
TOTAL SUP. AUXILIAR	44,80 m ²	≤ 50,00 m ²
	4,47 %	≤ 5,00 %
ALTURA MAXIMA 2 p / 6,00 m.		
Retranqueos según planos		

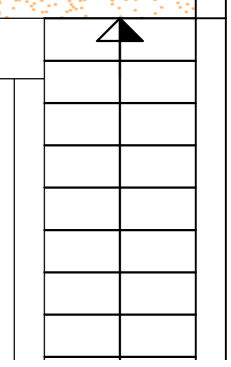
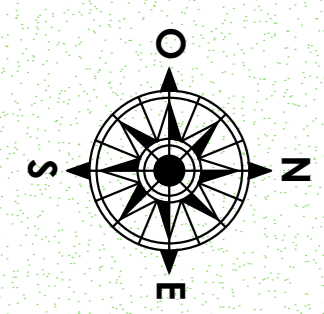


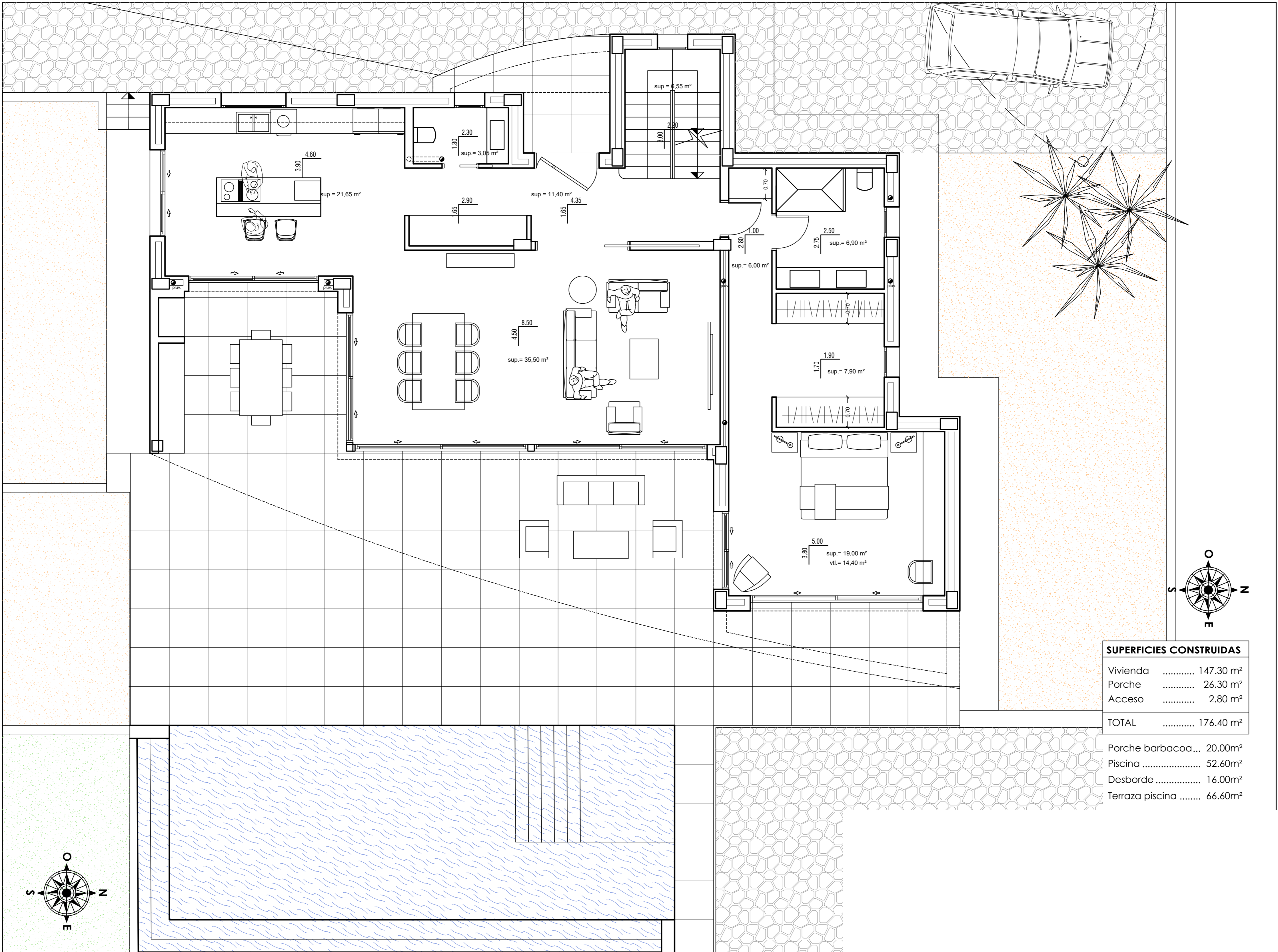
C/ Mostoles

Conexión a red de alcantarillado existente



SUPERFICIES CONSTRUIDAS
 Vivienda 133.65 m²

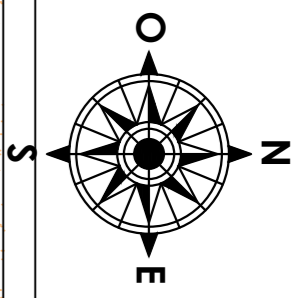
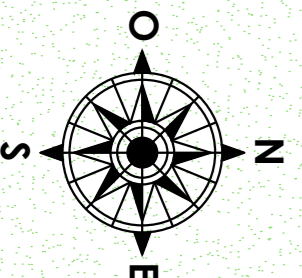


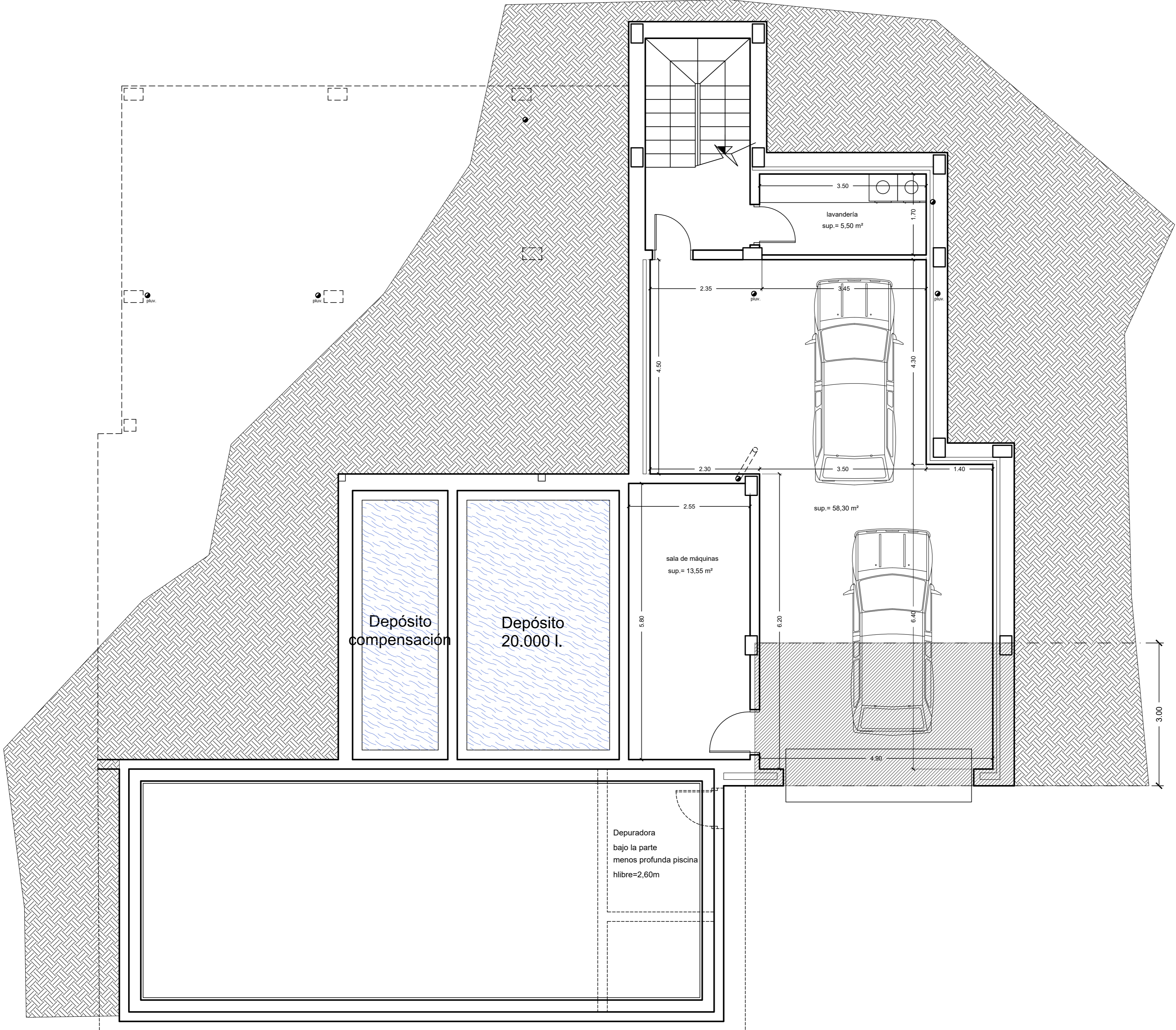


SUPERFICIES CONSTRUIDAS

Vivienda	147.30 m ²
Porche	26.30 m ²
Acceso	2.80 m ²
TOTAL	176.40 m²

Porche barbacoa...	20.00m ²
Piscina	52.60m ²
Desborde	16.00m ²
Terraza piscina	66.60m ²





SUPERFICIES CONSTRUIDAS

Sótano total	90.00 m ²
NO computable	73.60 m ²
COMPUTABLE	16.40 m ²

SUPERFICIES AUXILIARES

Sala de máquinas...	16.50 m ²
Depuradora	8.30 m ²