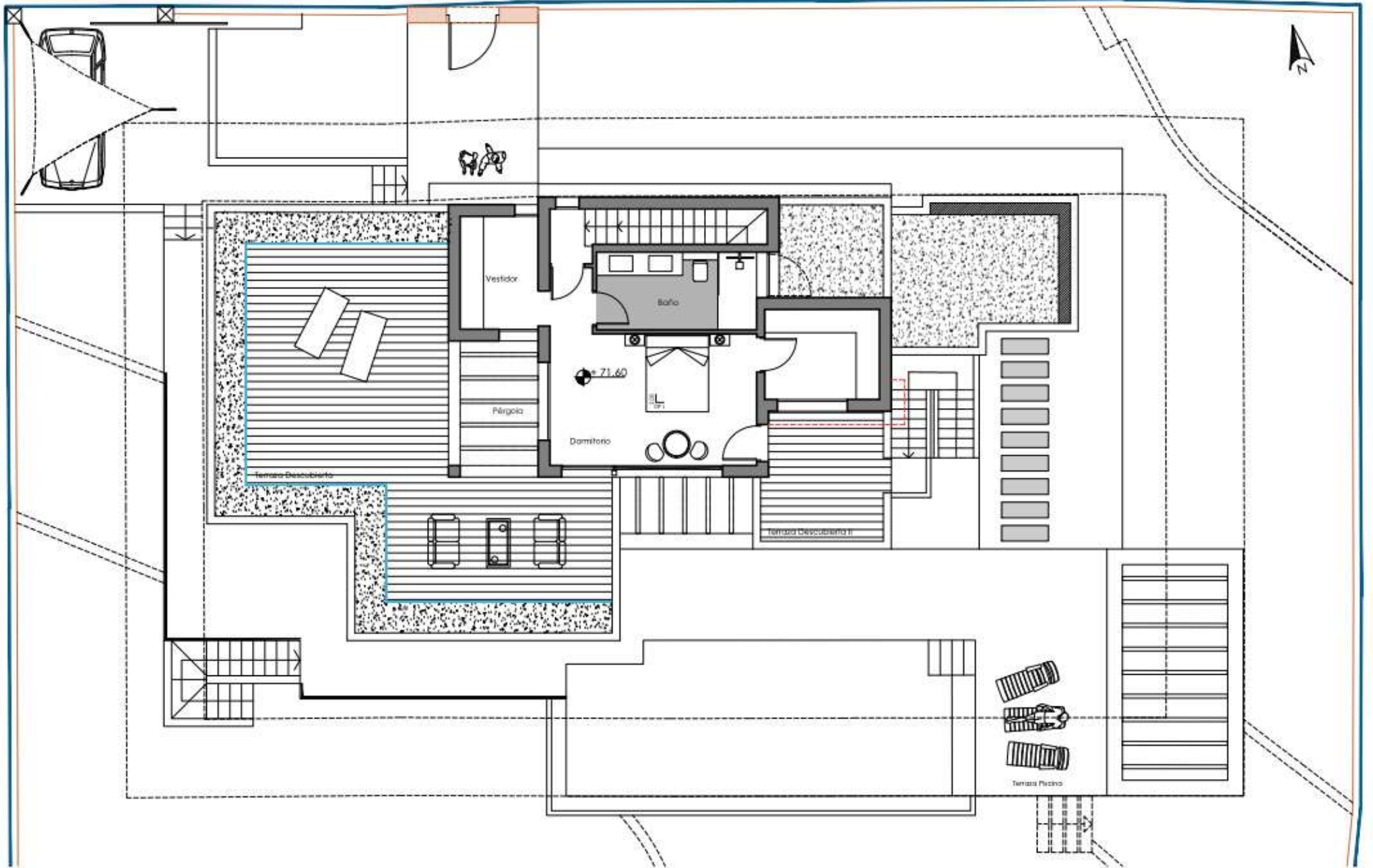
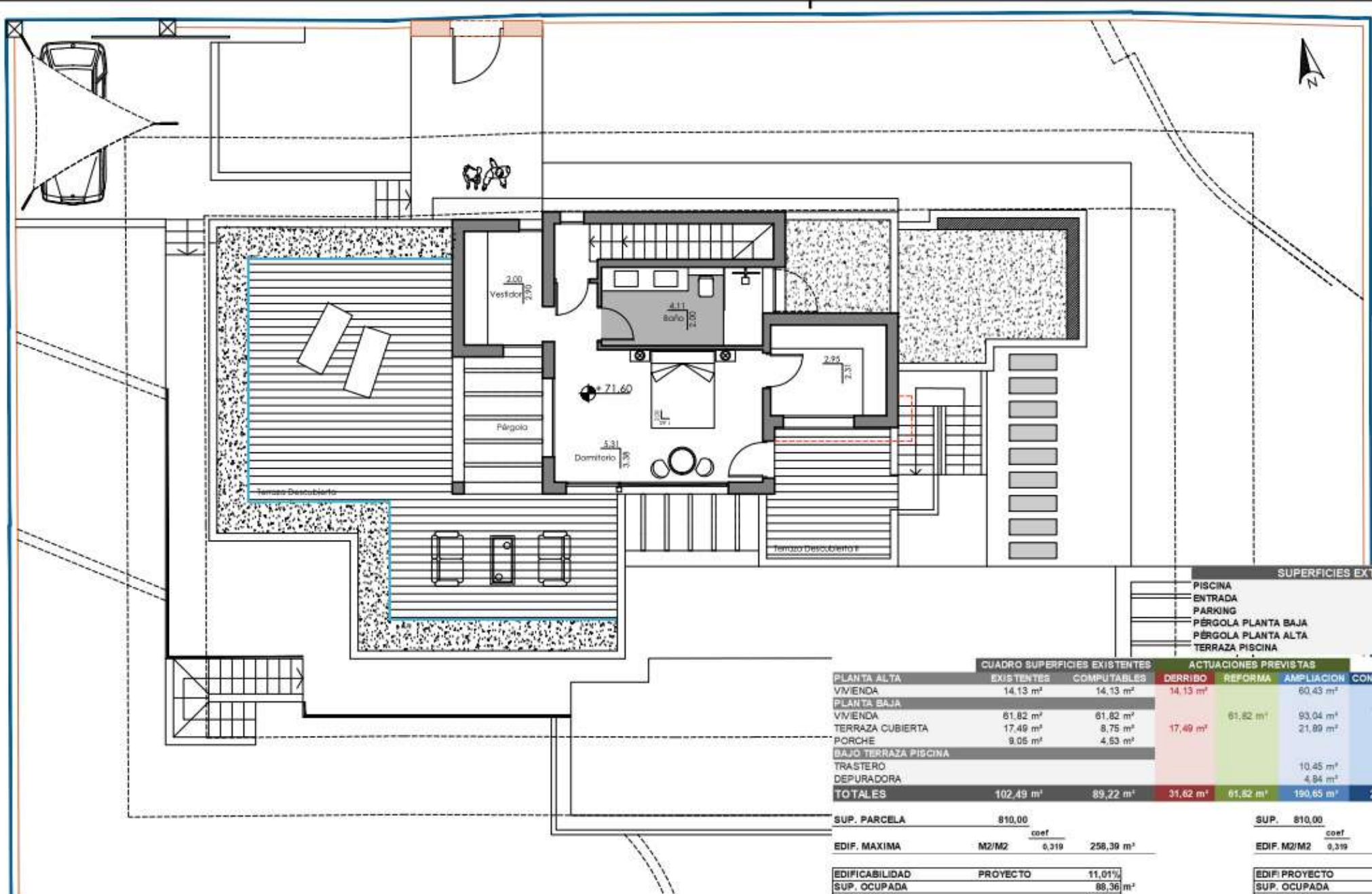


| SUPERFICIES EXTERIORES | |
|------------------------|----------|
| PISCINA | 40,80 m2 |
| ENTRADA | 17,40 m2 |
| PARKING | 31,58 m2 |
| PÉRGOLA PLANTA BAJA | 22,20 m2 |
| PÉRGOLA PLANTA ALTA | 8,05 m2 |
| TERRAZA PISCINA | 68,25 m2 |

| | CUADRO SUPERFICIES EXISTENTES | | ACTUACIONES PREVISTAS | | | | |
|-----------------------------|-------------------------------|----------------------------|----------------------------|----------------------------|-----------------------------|-----------------------------|-----------------------------|
| | EXISTENTES | COMPUTABLES | DERRIBO | REFORMA | AMPLIACIÓN | CONSTRUIDAS | COMPUTABLES |
| PLANTA ALTA | | | | | | | |
| VIVIENDA | 14,13 m ² | 14,13 m ² | 14,13 m ² | | 50,43 m ² | 60,43 m ² | 60,43 m ² |
| PLANTA BAJA | | | | | | | |
| VIVIENDA | 61,82 m ² | 61,82 m ² | | 51,82 m ² | 93,04 m ² | 154,86 m ² | 154,86 m ² |
| TERRAZA CUBIERTA | 17,49 m ² | 8,75 m ² | 17,49 m ² | | 21,89 m ² | 21,89 m ² | 10,95 m ² |
| PORCHE | 9,05 m ² | 4,53 m ² | | | | 9,05 m ² | 4,53 m ² |
| BAJO TERRAZA PISCINA | | | | | | | |
| TRASTERO | | | | | 10,45 m ² | 10,45 m ² | 10,45 m ² |
| DEPURADORA | | | | | 4,84 m ² | 4,84 m ² | 4,84 m ² |
| TOTALES | 102,49 m² | 89,22 m² | 31,62 m² | 51,82 m² | 190,65 m² | 261,52 m² | 246,05 m² |

| | | | | | | |
|----------------|----------------------|--------------|-----------------------|-------------|------------|-----------------------|
| SUP. PARCELA | 810,00 | | SUP. | 810,00 | | |
| EDIF. MAXIMA | M2/M2 | coef 0,319 | 258,39 m ² | EDIF. M2/M2 | coef 0,319 | 258,39 m ² |
| EDIFICABILIDAD | PROYECTO | 11,01% | EDIF. PROYECTO | 30,36% | | |
| SUP. OCUPADA | 88,36 m ² | SUP. OCUPADA | 185,80 m ² | | | |
| OCUPACION | 10,91% | OCUPACION | 22,94% | | | |





SUPERFICIES EXTERIORES

| | |
|---------------------|----------------------|
| PISCINA | 40,80 m ² |
| ENTRADA | 17,40 m ² |
| PARKING | 31,58 m ² |
| PÉRGOLA PLANTA BAJA | 22,20 m ² |
| PÉRGOLA PLANTA ALTA | 8,05 m ² |
| TERRAZA PISCINA | 68,25 m ² |

CUADRO SUPERFICIES EXISTENTES

| | EXISTENTES | COMPUTABLES |
|----------------------|-----------------------|----------------------|
| PLANTA ALTA | | |
| VIVIENDA | 14,13 m ² | 14,13 m ² |
| PLANTA BAJA | | |
| VIVIENDA | 61,82 m ² | 61,82 m ² |
| TERRAZA CUBIERTA | 17,49 m ² | 8,75 m ² |
| PORCHE | 9,05 m ² | 4,53 m ² |
| BAJO TERRAZA PISCINA | | |
| TRASTERO | | |
| DEPURADORA | | |
| TO TALES | 102,49 m ² | 89,22 m ² |

ACTUACIONES PREVISTAS

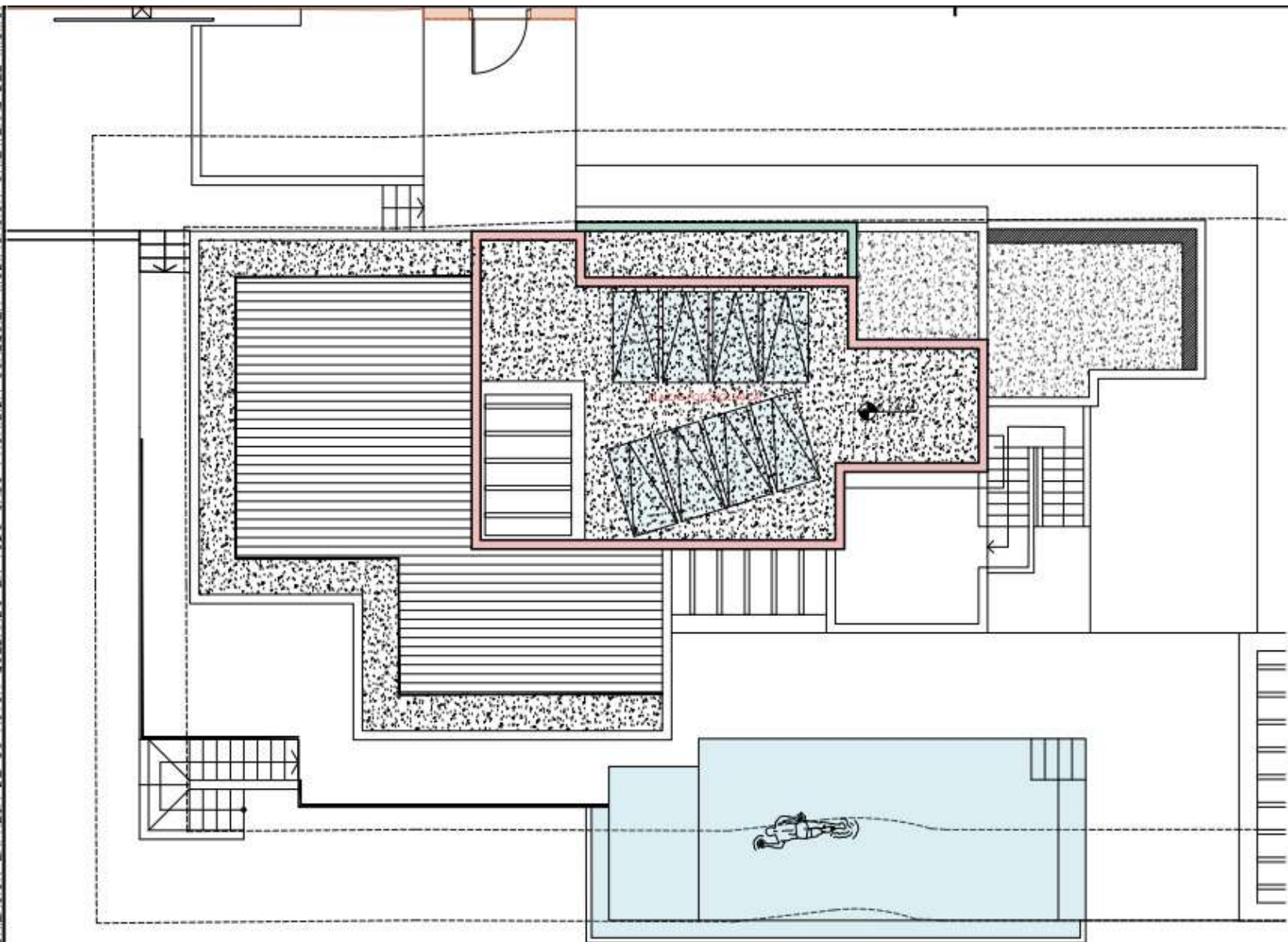
| DERRIBO | REFORMA | AMPLIACION | CONSTRUIDAS | COMPUTABLES |
|----------------------|----------------------|-----------------------|-----------------------|-----------------------|
| 14,13 m ² | 61,82 m ² | 93,04 m ² | 60,43 m ² | 60,43 m ² |
| 17,49 m ² | | 21,99 m ² | 154,86 m ² | 154,86 m ² |
| | | | 21,89 m ² | 10,95 m ² |
| | | | 9,05 m ² | 4,53 m ² |
| | | 10,45 m ² | 10,45 m ² | 10,45 m ² |
| | | 4,94 m ² | 4,94 m ² | 4,94 m ² |
| 31,62 m ² | 61,82 m ² | 190,65 m ² | 261,52 m ² | 246,05 m ² |

| | |
|--------------|--|
| SUP. PARCELA | 810,00 |
| EDIF. MAXIMA | M ² /M ² 0,319 258,39 m ² |

| |
|--|
| SUP. 810,00 |
| EDIF. M ² /M ² 0,319 258,39 m ² |

| | |
|-------------------------|----------------------|
| EDIFICABILIDAD PROYECTO | 11,01% |
| SUP. OCUPADA | 88,36 m ² |
| OCUPACION | 10,91% |

| | |
|----------------|-----------------------|
| EDIF. PROYECTO | 30,38% |
| SUP. OCUPADA | 185,80 m ² |
| OCUPACION | 22,94% |



ESPECIFICACIONES CUBIERTA

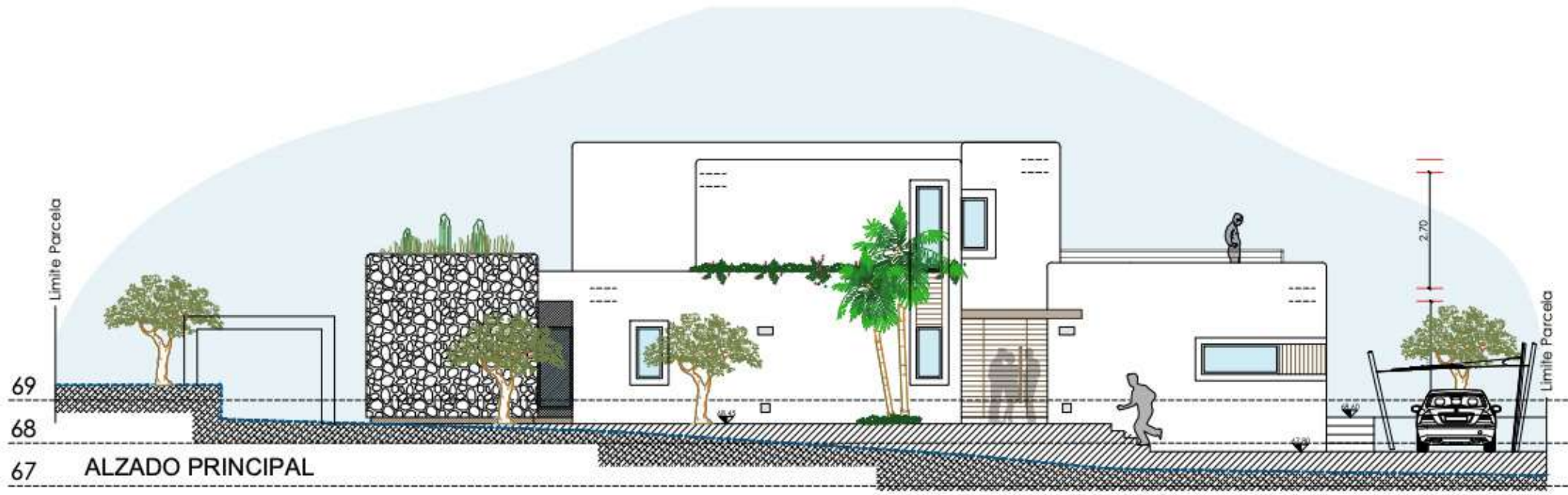
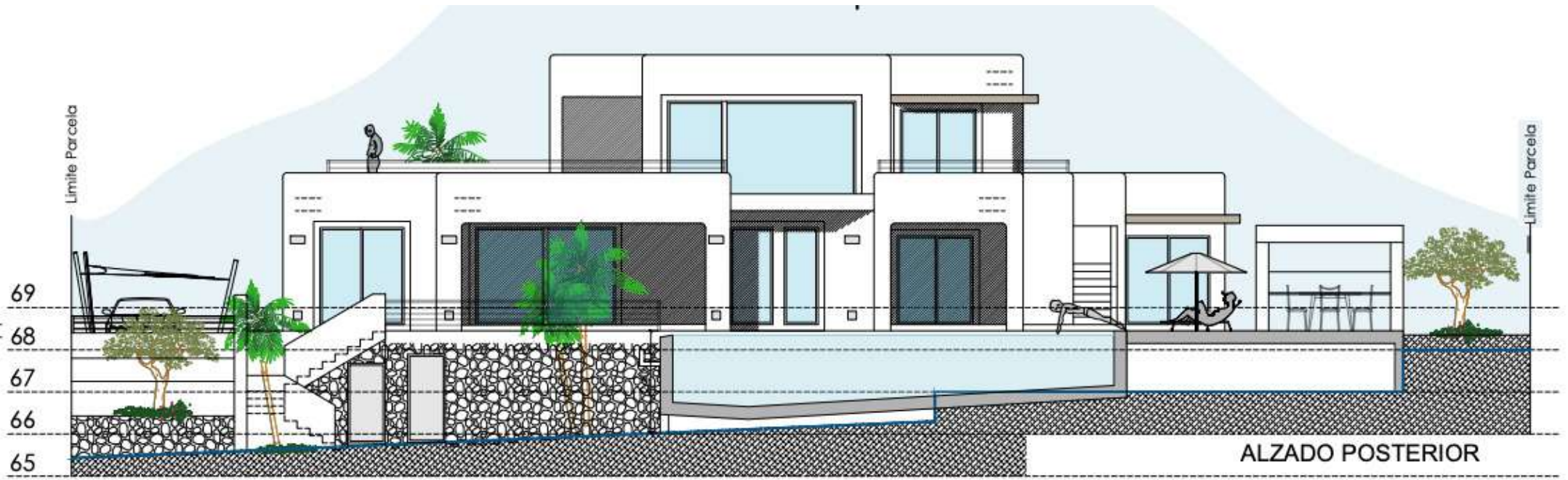


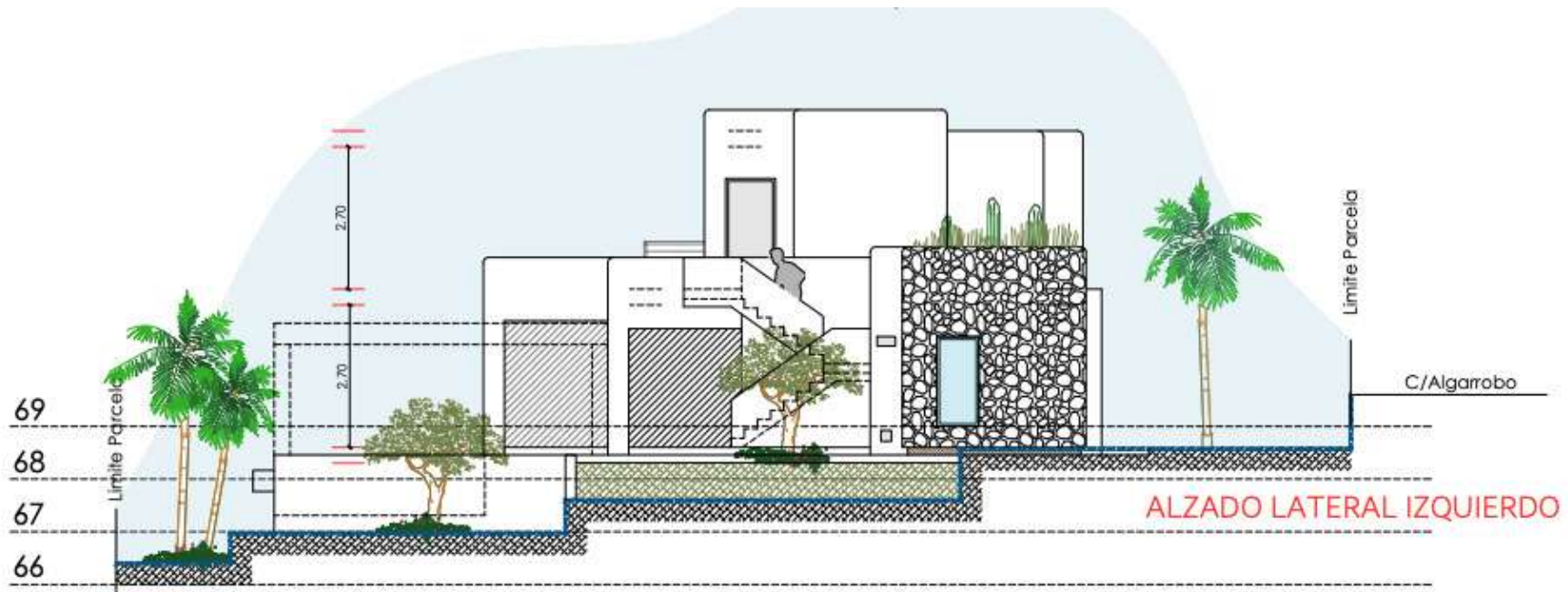
Albardilla

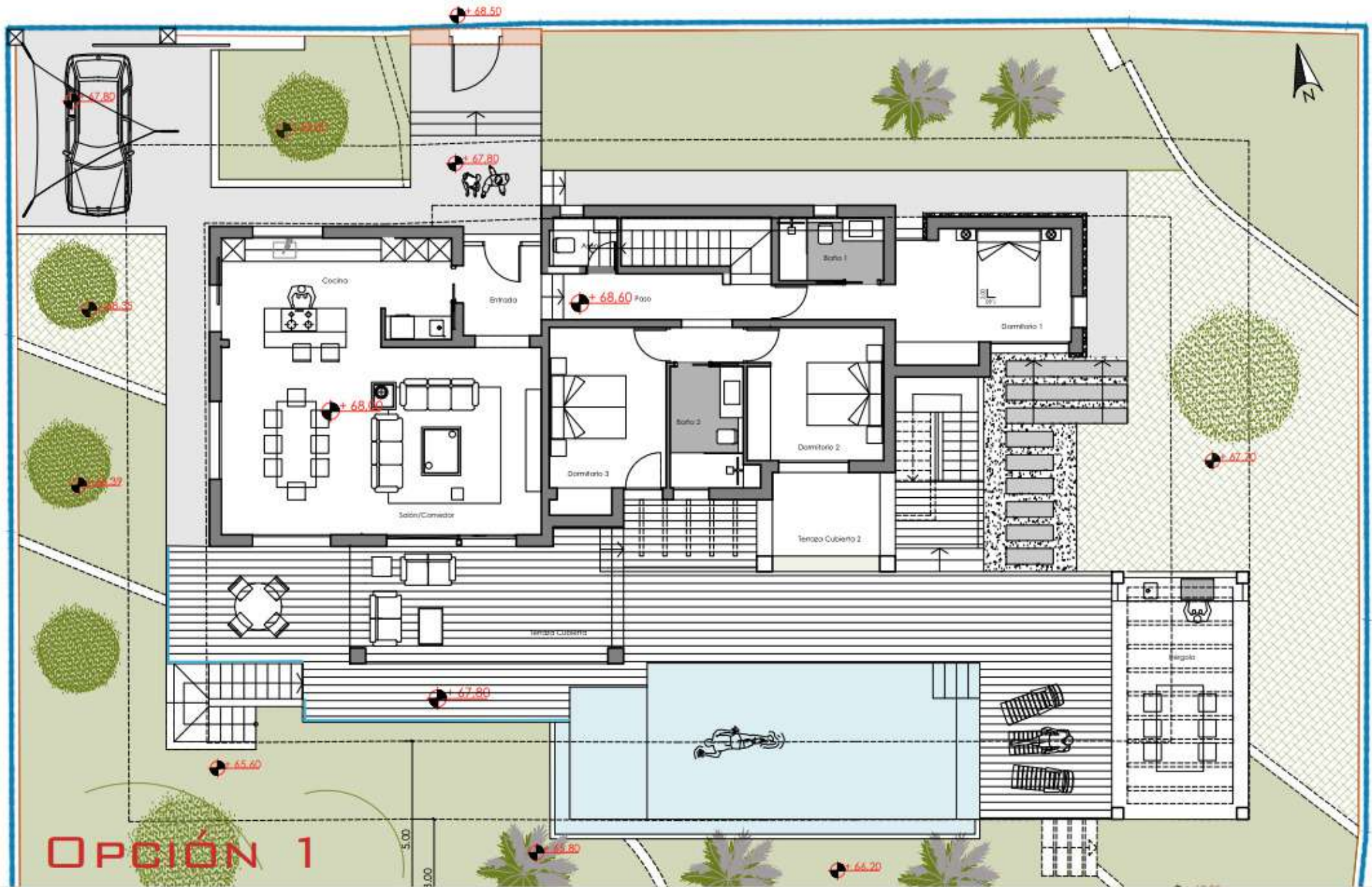
- Hormigón Polímero. Modelo ULMA-MJ
- Color Blanco
- Con goterón
- Impermeable
- Disponer juntas de dilatación en petos
- Juntas impermeables con sellado adecuado
- Albardilla recta.
- Disponer aliviaderos en cubierta.
- ml de albardilla 36,80¹
- ml de albardilla 7,60²

- Gárgolas prefabricadas
- Aliviadores
- Juntas dilatación

+0.00
 Altura de los petos terminados







OPCIÓN 1