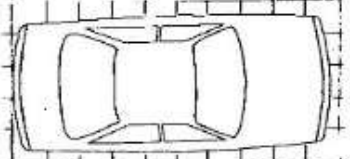
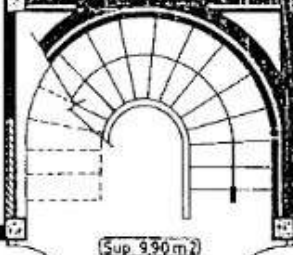


AL JIBE
Sup 12,5 m²

AL JIBE
Sup 19,5 m²



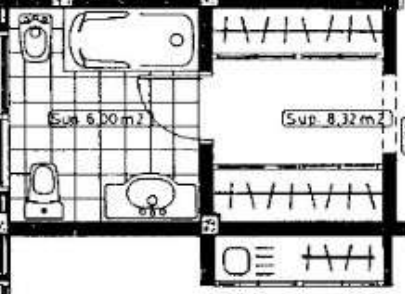
Sup. 33,50 m²



Sup 9,90 m²

Sup 16,00 m²

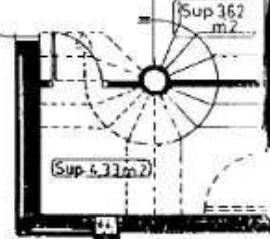
Sup. 11,18 m²



Sup. 6,00 m²

Sup. 8,32 m²

Sup 2,6 m²

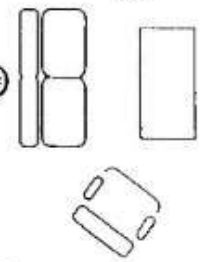
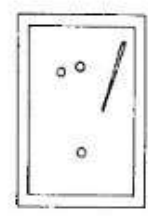
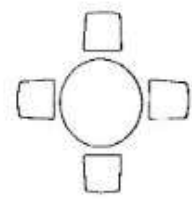


Sup 3,62 m²

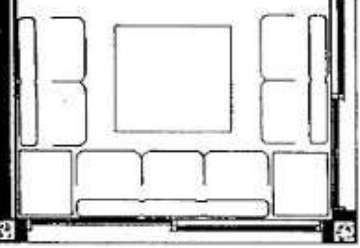
Sup. 4,31 m²

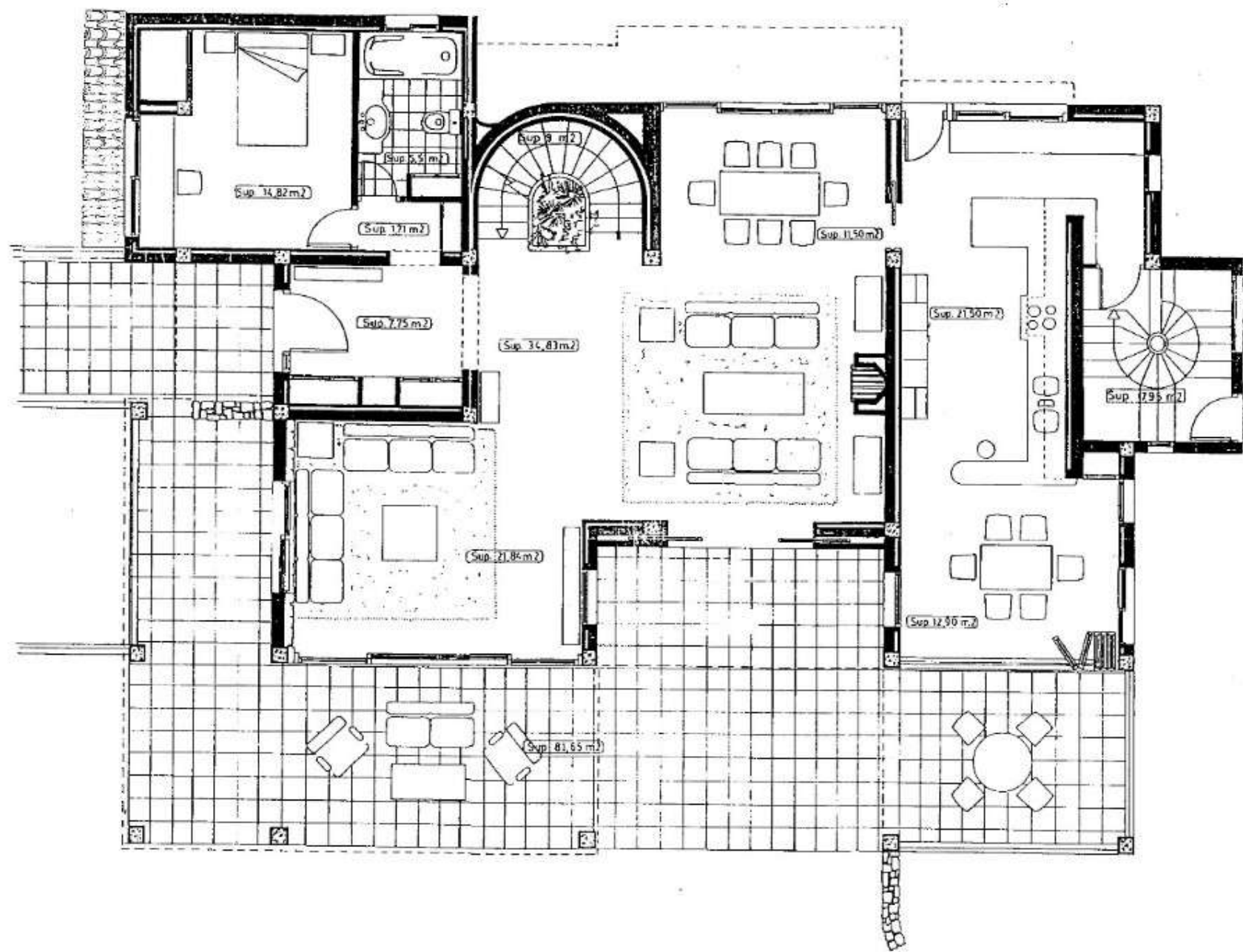
Sup 78,31 m²

Sup. 22,80 m²



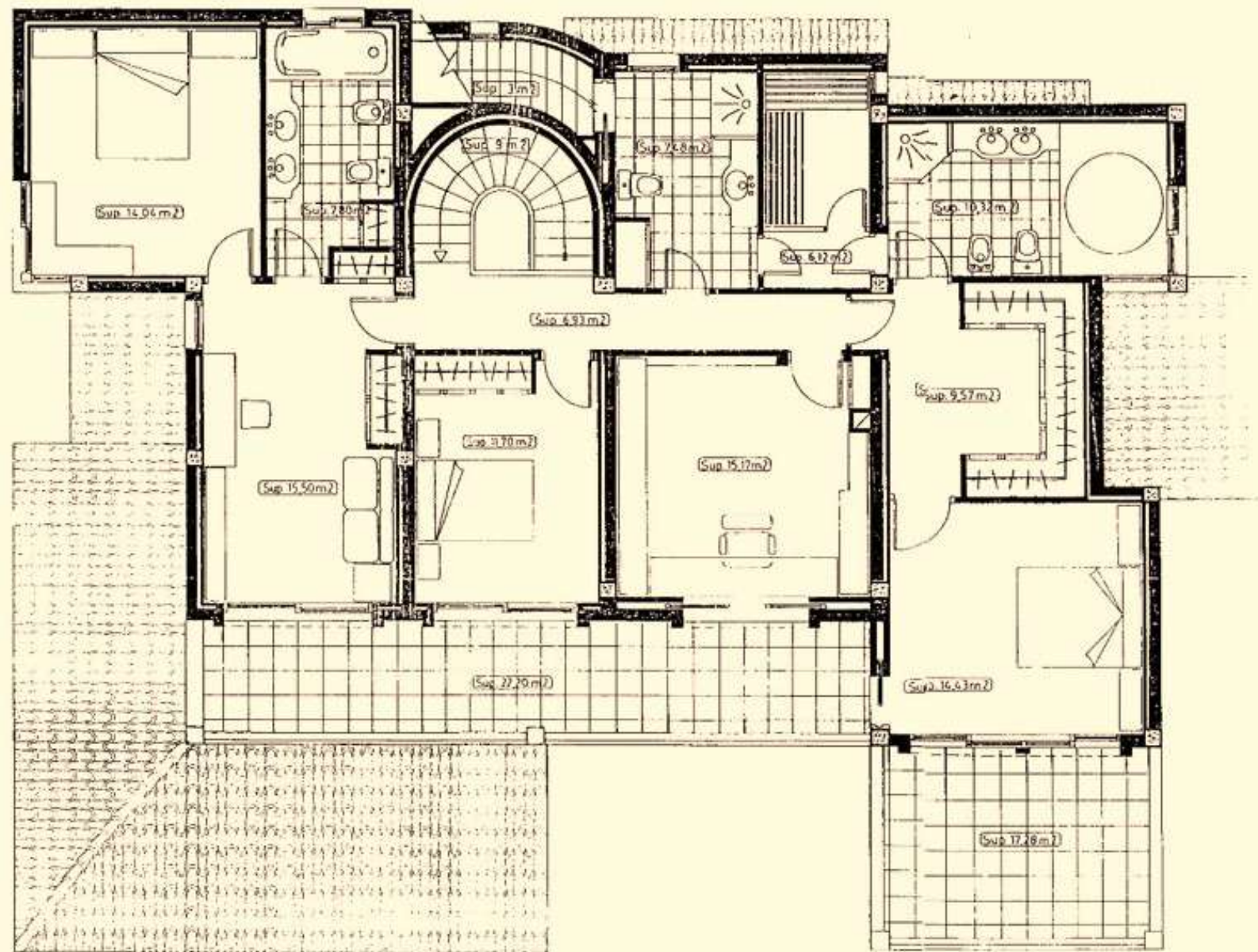
ALMACEN Y CUARTO DE MAQUINAS
Sup. 52,00 m²





PLANTA BAJA

sup. cerrada 173,24 m²
 sup. cubierta 80,76 m²



PLANTA PISO

sup cerrada 160,83 m²
 sup terrazas 39,48 m²