

# TYRIAN

Tyros - 206

PRICE ON APPLICATION

Type	Bedrooms	Bathrooms
Apartment	3	3+1
Interior	Terrace	Total
213,54m <sup>2</sup>	69,21m <sup>2</sup>	282,75m <sup>2</sup>

### Built Area

Living Area	213,54m <sup>2</sup>
<hr/>	
Terrace	69,21m <sup>2</sup>
<hr/>	
Total	282,75m <sup>2</sup>
<hr/>	
Built Area Common Area	308,65m <sup>2</sup>

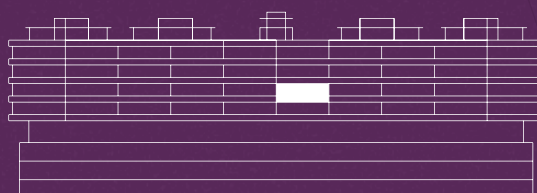
### Usable Area

Living Area	192,00m <sup>2</sup>
<hr/>	
Terrace	55,90m <sup>2</sup>
<hr/>	
Total	247,90m <sup>2</sup>

### Usable area according to Decree BOJA 218/2005

Living Area	192,00m <sup>2</sup>
<hr/>	
According to decree	211,20m <sup>2</sup>

\*All dimensions are approximate and will depend on the final layout of the construction.



3 BEDROOM DATE: SEPTEMBER 2024  
 APARTMENT SCALE: 1/100 (A2)

PROPERTY: ARCHITECT:  
 DEI HOMES SL. MOISÉS GARCÍA GONZÁLEZ

Usable Area

Living Room + Kitchen	63,50m <sup>2</sup>
Master Bedroom	49,40m <sup>2</sup>
Bedroom 1	29,00m <sup>2</sup>
Bedroom 2	25,40m <sup>2</sup>
Terrace 1	47,80m <sup>2</sup>
Terrace 2	8,10m <sup>2</sup>

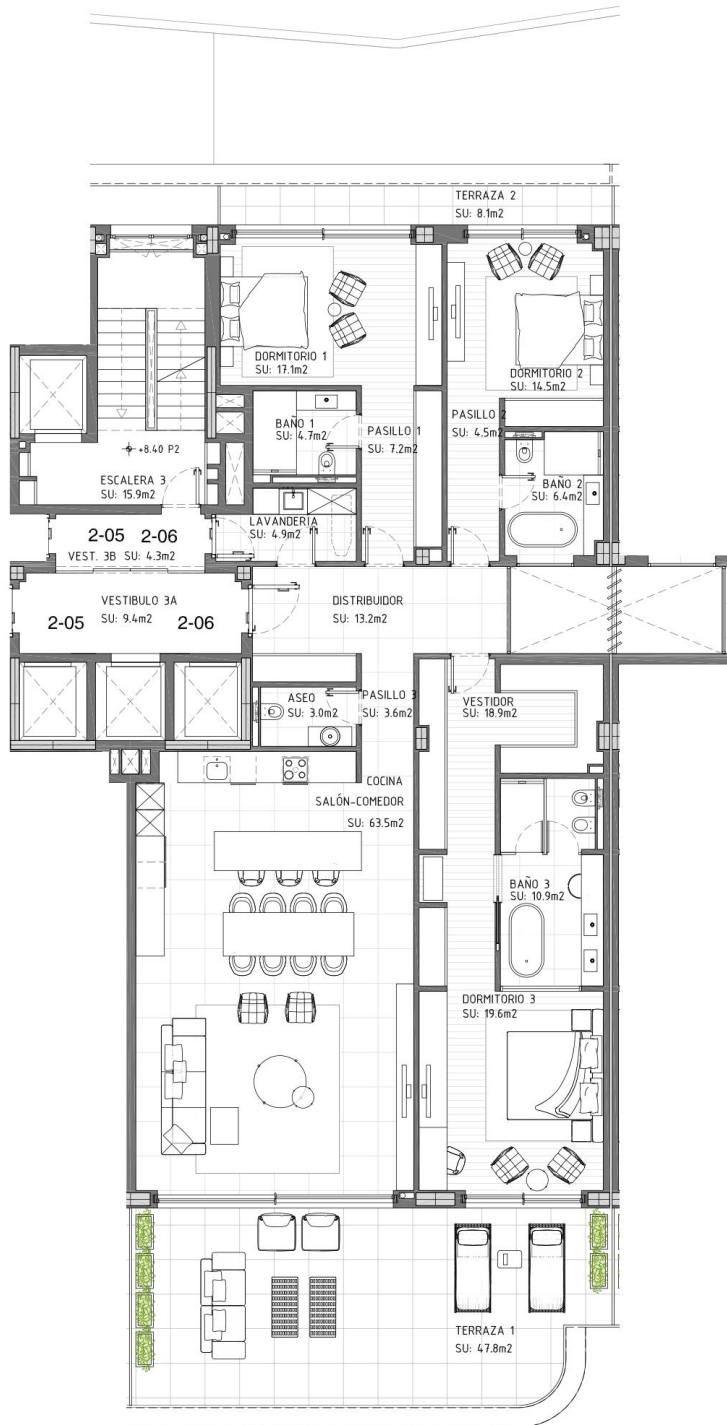
\*All dimensions are approximate and will depend on the final layout of the construction.

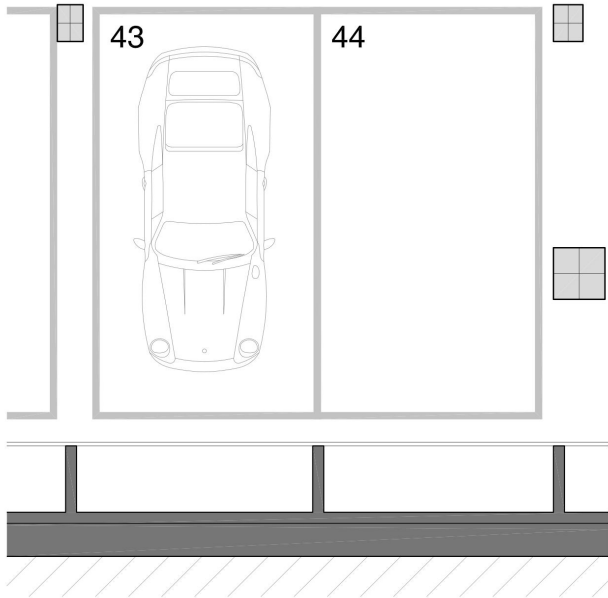
FLOOR 2



\*Indicative plan, not legally binding.

\*This document is for informational purposes and may undergo changes due to technical requirements of the project. All furniture, including kitchen furnishings, is for reference only. The door swings and the layout of sanitary fixtures are not binding. The indicated surface areas are approximate and may be subject to modifications for technical reasons during the execution of the works. The surface areas listed below have been calculated in accordance with Decree 218/2005 on consumer information regarding the sale and rental of homes in Andalusia.





3 BEDROOM DATE: SEPTEMBER 2024  
 APARTMENT SCALE: 1/100 (A2)

PROPERTY: DEI HOMES SL. ARCHITECT: MOISÉS GARCÍA GONZÁLEZ

Usable Area

Storage Room 5,68m<sup>2</sup>

Parking 39,17m<sup>2</sup>

Garage Basement Floor -3



\*This document is for informational purposes and may undergo changes due to technical requirements of the project. All furniture, including kitchen furnishings, is for reference only. The door swings and the layout of sanitary fixtures are not binding. The indicated surface areas are approximate and may be subject to modifications for technical reasons during the execution of the works. The surface areas listed below have been calculated in accordance with Decree 218/2005 on consumer information regarding the sale and rental of homes in Andalusia.