

# TYRIAN

Ciro - 407

PRICE ON APPLICATION

Type	Bedrooms	Bathrooms		
Penthouse	3	3+1		
Interior	Terrace	Supergarage	Total	
223,97m <sup>2</sup>	287,55m <sup>2</sup>	112,18m <sup>2</sup>	623,70m <sup>2</sup>	

### Built Area

Living Area	223,97m <sup>2</sup>
<hr/>	
Terrace	287,55m <sup>2</sup>
<hr/>	
Total	511,52m <sup>2</sup>
<hr/>	
Built Area Common Area	324,14m <sup>2</sup>

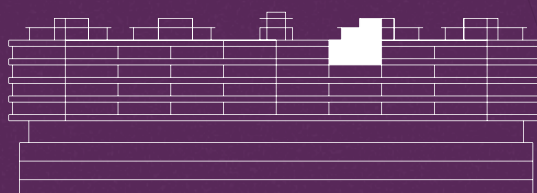
### Usable Area

Living Area	200,80m <sup>2</sup>
<hr/>	
Terrace	260,60m <sup>2</sup>
<hr/>	
Total	461,40m <sup>2</sup>

### Usable area according to Decree BOJA 218/2005

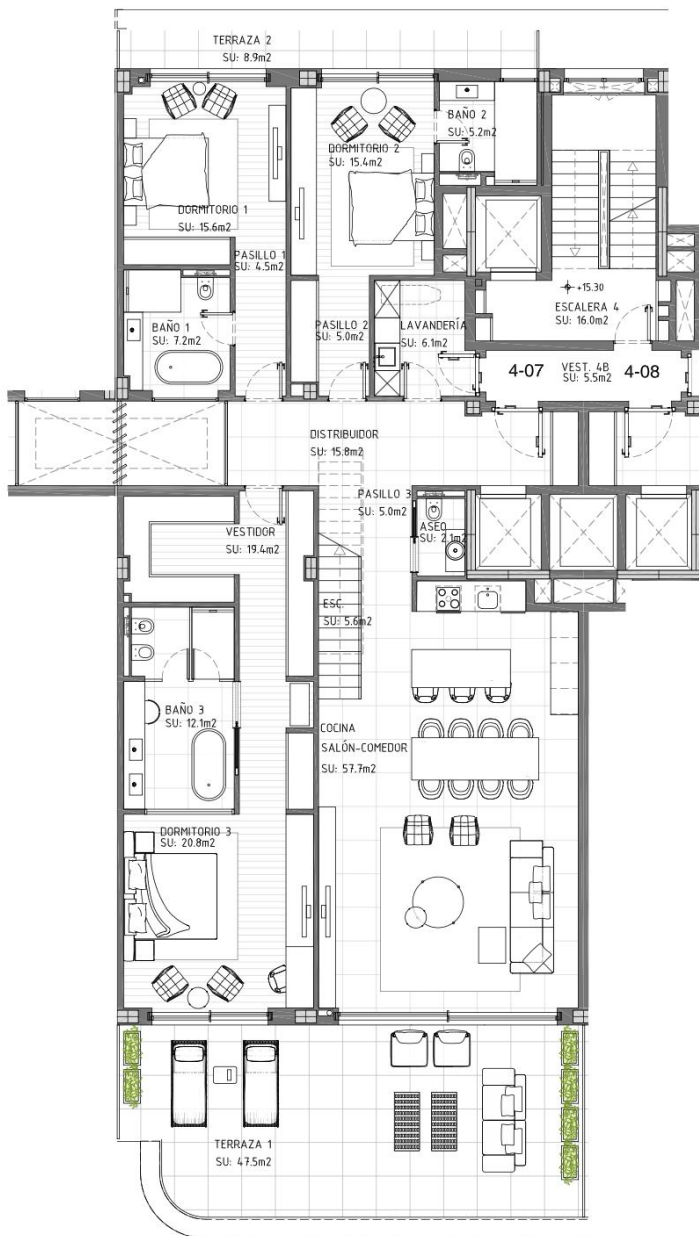
Living Area	200,80m <sup>2</sup>
<hr/>	
According to decree	220,88m <sup>2</sup>

\*All dimensions are approximate and will depend on the final layout of the construction.



3 BEDROOM DATE: SEPTEMBER 2024  
 PENTHOUSE SCALE: 1/100 (A2)

PROPERTY: DEI HOMES SL. ARCHITECT: MOISÉS GARCÍA GONZÁLEZ



### Usable Area

Living Room + Kitchen	57,70m <sup>2</sup>
Master Bedroom	52,30m <sup>2</sup>
Bedroom 1	27,30m <sup>2</sup>
Bedroom 2	25,60m <sup>2</sup>
Terrace 1	47,50m <sup>2</sup>
Terrace 2	8,90m <sup>2</sup>

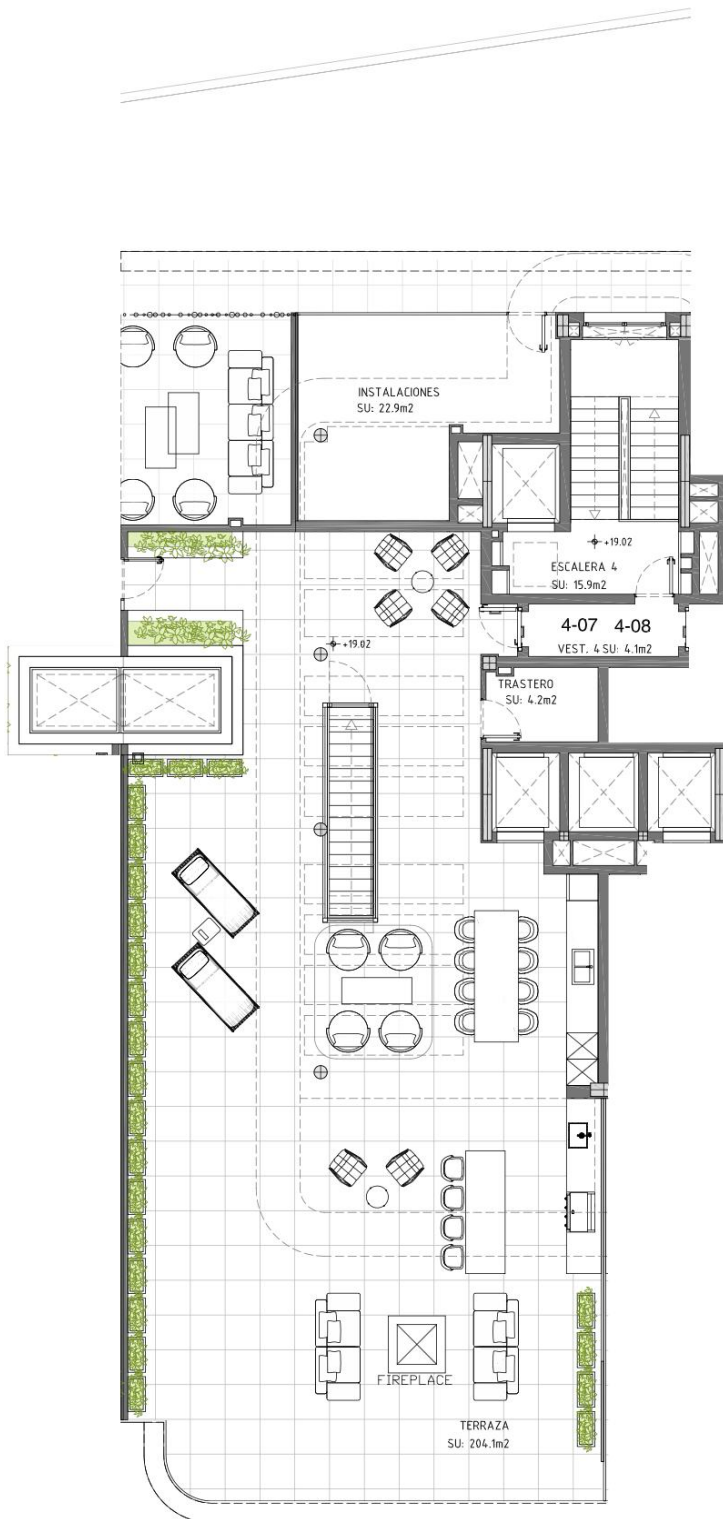
\*All dimensions are approximate and will depend on the final layout of the construction.

### FLOOR 4



\*Indicative plan, not legally binding.

\*This document is for informational purposes and may undergo changes due to technical requirements of the project. All furniture, including kitchen furnishings, is for reference only. The door swings and the layout of sanitary fixtures are not binding. The indicated surface areas are approximate and may be subject to modifications for technical reasons during the execution of the works. The surface areas listed below have been calculated in accordance with Decree 218/2005 on consumer information regarding the sale and rental of homes in Andalusia.



3 BEDROOM DATE: SEPTEMBER 2024  
 PENTHOUSE SCALE: 1/100 (A2)

PROPERTY: DEI HOMES SL. ARCHITECT: MOISÉS GARCÍA GONZÁLEZ

### Usable Area

Utility Room	22,90m <sup>2</sup>
Terrace	204,10m <sup>2</sup>
Storage Room	4,20m <sup>2</sup>

\*All dimensions are approximate and will depend on the final layout of the construction.

### SOLARIUM



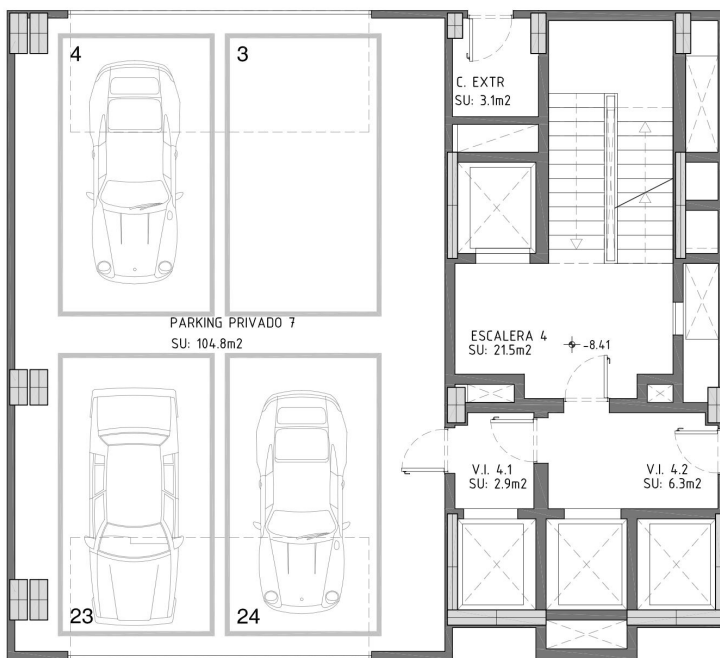
\*Indicative plan, not legally binding.

\*This document is for informational purposes and may undergo changes due to technical requirements of the project. All furniture, including kitchen furnishings, is for reference only. The door swings and the layout of sanitary fixtures are not binding. The indicated surface areas are approximate and may be subject to modifications for technical reasons during the execution of the works. The surface areas listed below have been calculated in accordance with Decree 218/2005 on consumer information regarding the sale and rental of homes in Andalusia.

[QUALITY MEMORY LINK](#)

3 BEDROOM DATE: SEPTEMBER 2024  
 PENTHOUSE SCALE: 1/100 (A2)

PROPERTY: ARCHITECT:  
 DEI HOMES SL. MOISÉS GARCÍA GONZÁLEZ



## Usable Area

Supergarage 104,80m<sup>2</sup>

\*All dimensions are approximate and will depend on the final layout of the construction.

FLOOR 4



\*Indicative plan, not legally binding.

\*This document is for informational purposes and may undergo changes due to technical requirements of the project. All furniture, including kitchen furnishings, is for reference only. The door swings and the layout of sanitary fixtures are not binding. The indicated surface areas are approximate and may be subject to modifications for technical reasons during the execution of the works. The surface areas listed below have been calculated in accordance with Decree 218/2005 on consumer information regarding the sale and rental of homes in Andalusia.

[QUALITY MEMORY LINK](#)