

TYRIAN

Fenicia - 101

PRICE ON APPLICATION

Type	Bedrooms	Bathrooms
Apartment	4	4+1
Interior	Terrace	Total
275,27m ²	163,70m ²	438,97m ²

Built Area

Living Area	275,27m ²
<hr/>	
Terrace	163,70m ²
<hr/>	
Total	438,97m ²
<hr/>	
Built Area Incl. Common Area	397,87m ²

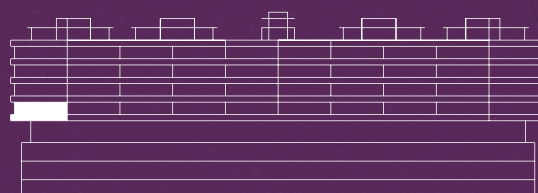
Usable Area

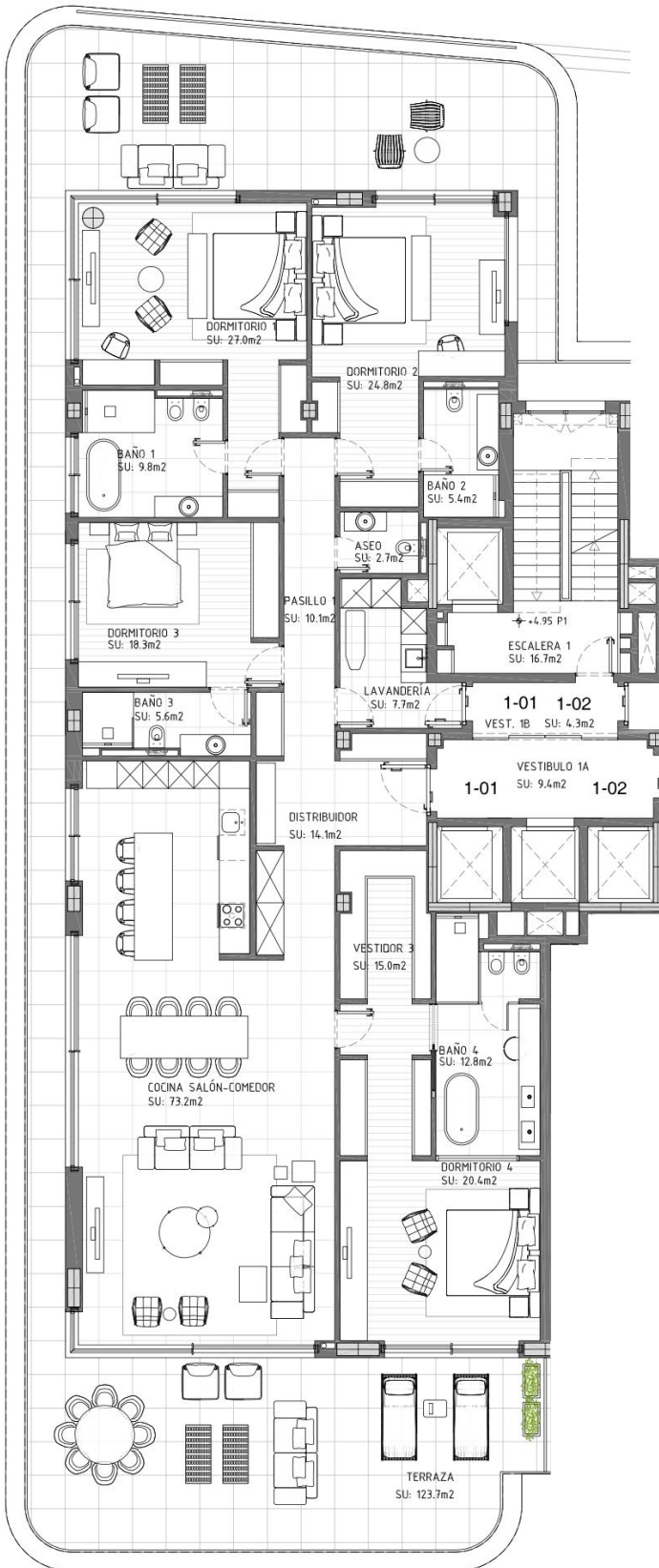
Living Area	246,90m ²
<hr/>	
Terrace	123,70m ²
<hr/>	
Total	370,60m ²

Usable area according to Decree BOJA 218/2005

Living Area	246,90m ²
<hr/>	
According to decree	271,59m ²

*All dimensions are approximate and will depend on the final layout of the construction.





4 BEDROOM DATE: MARCH 2025
 APARTMENT SCALE: 1/100 (A2)

PROPERTY: ARCHITECT:
 DEI HOMES SL. MOISÉS GARCÍA GONZÁLEZ

Usable Area

Living Room + Kitchen	73,20m ²
Master Bedroom	48,20m ²
Bedroom 1	36,80m ²
Bedroom 2	30,20m ²
Bedroom 3	23,90m ²
Terrace	123,70m ²

*All dimensions are approximate and will depend on the final layout of the construction.

FLOOR 1



*Indicative plan, not legally binding.

*This document is for informational purposes and may undergo changes due to technical requirements of the project. All furniture, including kitchen furnishings, is for reference only. The door swings and the layout of sanitary fixtures are not binding. The indicated surface areas are approximate and may be subject to modifications for technical reasons during the execution of the works. The surface areas listed below have been calculated in accordance with Decree 218/2005 on consumer information regarding the sale and rental of homes in Andalusia.

4 BEDROOM DATE: SEPTEMBER 2024
 APARTMENT SCALE: 1/100 (A2)

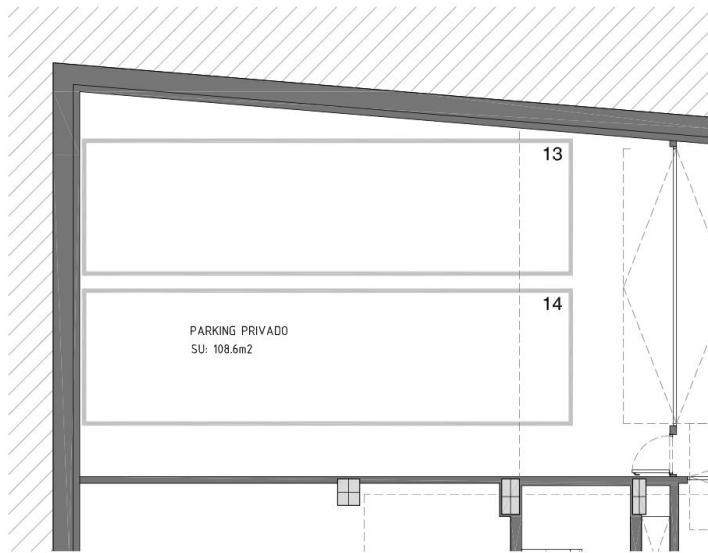
PROPERTY: DEI HOMES SL. ARCHITECT: MOISÉS GARCÍA GONZÁLEZ

Usable Area

Supergarage 108,60m²

Storage Room 0,00m²

*All dimensions are approximate and will depend on the final layout of the construction.



Garage Basement Floor -2



*This document is for informational purposes and may undergo changes due to technical requirements of the project. All furniture, including kitchen furnishings, is for reference only. The door swings and the layout of sanitary fixtures are not binding. The indicated surface areas are approximate and may be subject to modifications for technical reasons during the execution of the works. The surface areas listed below have been calculated in accordance with Decree 218/2005 on consumer information regarding the sale and rental of homes in Andalusia.