



Villa 25

Tipology C

Bedrooms
6

Bathrooms
6+2

Orientation
S/E

PRICE ON REQUEST





AVENUE

MARBELLA

VILLA 25

PLOT	1.673,54 m ²
------	-------------------------

BUILT AREA

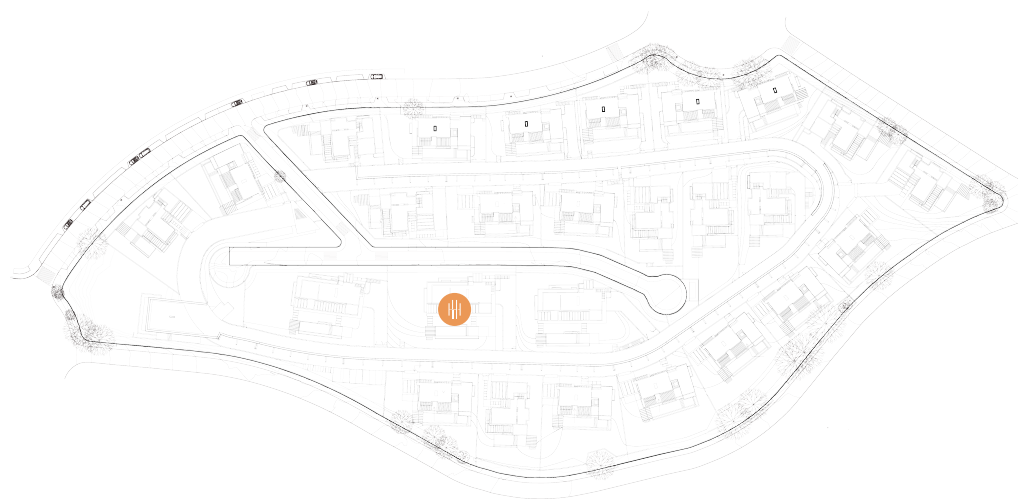
Living Area	701,30 m ²
-------------	-----------------------

Terrace Area	446,50 m ²
--------------	-----------------------

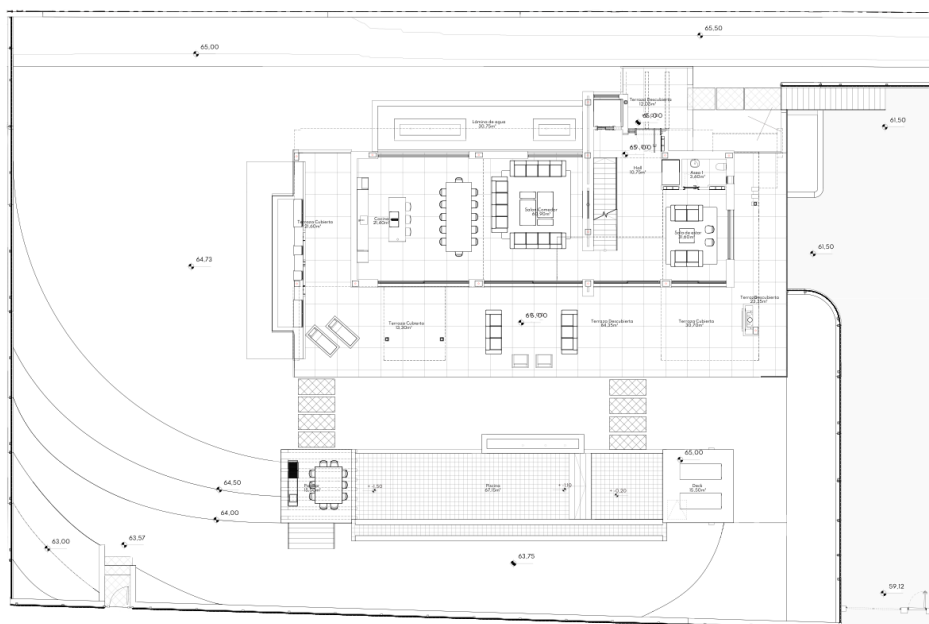
ACCORDING TO DECRETO 218/2005

Useful Area	607,86 m ²
-------------	-----------------------

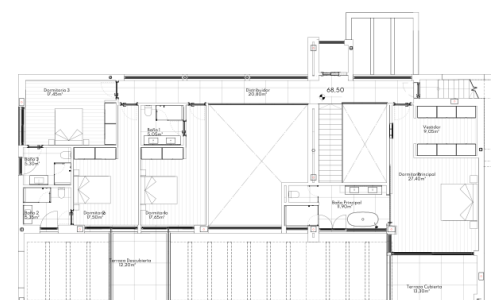
Built Area	783,17 m ²
------------	-----------------------



This plan may be modified depending on progress of the development. The furniture shown is purely for decorative purposes. The project manager reserves the right to make the necessary changes for any possible functional, aesthetic and legal reasons, without this negatively affecting the quality of the construction. Illustrative dimensions.



MAIN LEVEL



UPPER LEVEL



This plan may be modified depending on progress of the development. The furniture shown is purely for decorative purposes. The project manager reserves the right to make the necessary changes for any possible functional, aesthetic and legal reasons, without this negatively affecting the quality of the construction. Illustrative dimensions.

avenuemarbella.es