



---

## Villa 2

Tipology B1

Bedrooms  
5

Bathrooms  
5+2

Orientation  
E

PRICE ON REQUEST









# AVENUE

MARBELLA

## VILLA 2

PLOT	979,04 m <sup>2</sup>
------	-----------------------

### BUILT AREA

Living Area	488,25 m <sup>2</sup>
-------------	-----------------------

Terrace Area	355,15 m <sup>2</sup>
--------------	-----------------------

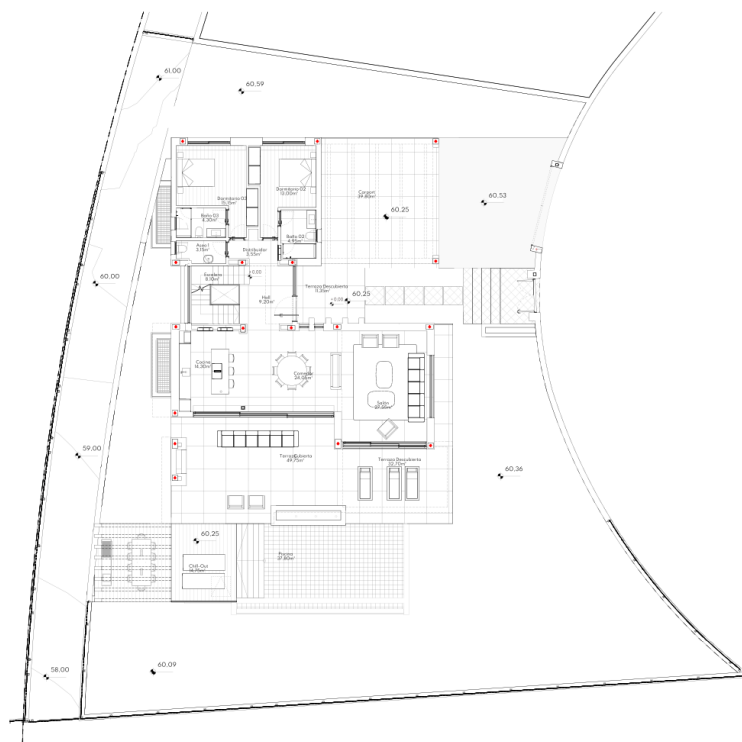
ACCORDING TO DECRETO 218/2005

Useful Area	434,56 m <sup>2</sup>
-------------	-----------------------

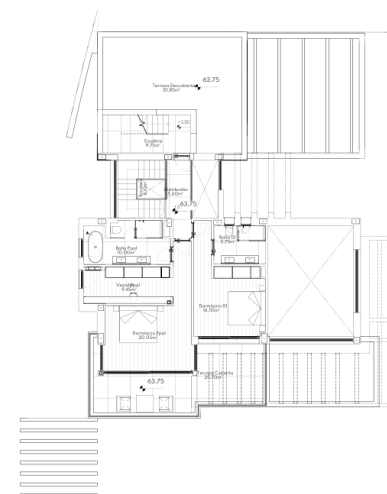
Built Area	546,28 m <sup>2</sup>
------------	-----------------------



This plan may be modified depending on progress of the development. The furniture shown is purely for decorative purposes. The project manager reserves the right to make the necessary changes for any possible functional, aesthetic and legal reasons, without this negatively affecting the quality of the construction. Illustrative dimensions.



MAIN LEVEL



UPPER LEVEL



This plan may be modified depending on progress of the development. The furniture shown is purely for decorative purposes. The project manager reserves the right to make the necessary changes for any possible functional, aesthetic and legal reasons, without this negatively affecting the quality of the construction. Illustrative dimensions.



# SOLARIUM

