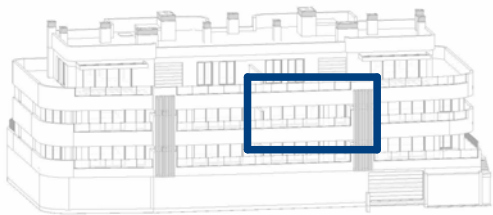


ORIGIN



LOCATION



APPROXIMATE AREAS

Entrance	8,93 m²
Living-room/Kitchen	41,70 m²
Hallway	2,30 m²
Master Bedroom	14,99 m²
Bedroom 2	11,44 m²
Master Bathroom	5,02 m²
Bathroom 2	4,01 m²
Utility Room	3,16 m²
INTERNAL USEFUL FLOOR AREA	91,55 m²

INTERNAL BUILT AREA	105,64 m²
P.P. COMMON AREAS	18,44 m²
INTERNAL CROSS AREA INCLUDING P.P. COMMON AREAS	124,08 m²

EXTERNAL AREAS	
Covered Terrace	27,63 m²
Uncovered Terrace	- m²
Courtyard	- m²
Garden	- m²
EXTERNAL USEFUL FLOOR AREA	27,63 m²

REGARDING DECRETO BOJA 218/2005	
TOTAL USEFUL FLOOR AREA	100,71 m²
TOTAL BUILT AREA	133,62 m²

DEPARTAMENTO TÉCNICO  
Revisión: 02  
Fecha: 05/01/2024

Property                      Block 2                      First Floor                      A Door

The information hereby contained may be subject to modifications in the course o the building works on account of technical or legal requirements, without detriment to the general level of quality of the materials. The illustrated furniture, including the kitchen, has decoration purposes only, and it is not included in the property. The steps leading to the property and to the patios are subject to modifications subject to the levelling of the streets at the Project Managers' criteria.

1 m                      2 m                      3 m                      4 m                      5 m