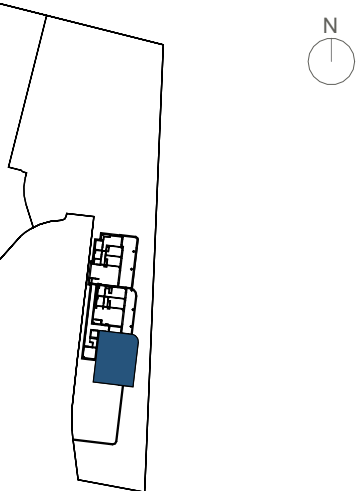


ORIGIN



LOCATION



APPROXIMATE AREAS



Entrance	2,95 m²
Living-room/Kitchen	34,67 m²
Hallway	3,37 m²
Master Bedroom	15,79 m²
Bedroom 2	9,98 m²
Bedroom 3	10,17 m²
Master Bathroom	4,39 m²
Bathroom 2	3,85 m²
Utility Room	2,38 m²
INTERNAL USEFUL FLOOR AREA	87,55 m²

INTERNAL BUILT AREA	104,57 m²
P.P. COMMON AREAS	20,73 m²
INTERNAL CROSS AREA INCLUDING P.P. COMMON AREAS	125,3 m²

EXTERNAL AREAS	
Covered Terrace	34,22 m²
Uncovered Terrace	- m²
Courtyard	- m²
Garden	- m²
EXTERNAL USEFUL FLOOR AREA	34,22 m²

REGARDING DECRETO BOJA 218/2005	
TOTAL USEFUL FLOOR AREA	96,31 m²
TOTAL BUILT AREA	134,6 m²

Property Block 10 Ground Floor C Door

1 m 2 m 3 m 4 m 5 m

The information hereby contained may be subject to modifications in the course o the building works on account of technical or legal requirements, without detriment to the general level of quality of the materials. The illustrated furniture, including the kitchen, has decoration purposes only, and it is not included in the property. The steps leading to the property and to the patios are subject to modifications subject to the levelling of the streets at the Project Managers' criteria.