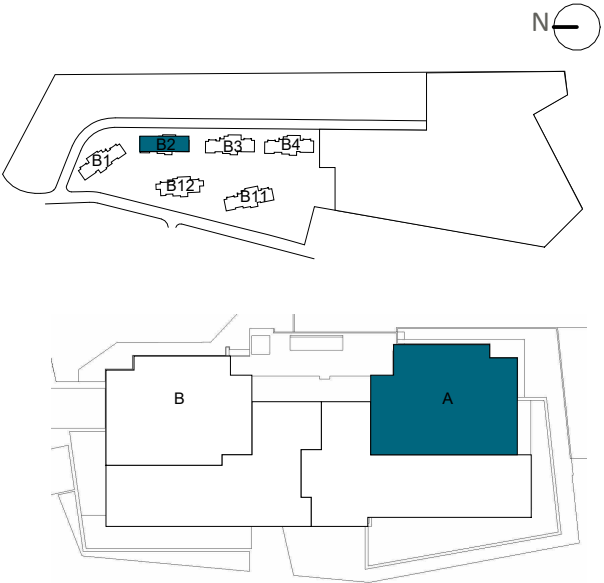


LOCATION



BLOCK 2

APPROXIMATE AREAS

Entrance	2.56 m²
Living room - Kitchen	46.65 m²
Hall	3.02 m²
Master Bedroom	17.65 m²
Master bathroom	6.49 m²
Bedroom 2	12.76 m²
Bedroom 3	12.32 m²
Bathroom 2	4.88 m²
INTERNAL USEFUL FLOOR AREA	106,33 m²

INTERNAL BUILT AREA	125,38 m²
P.P. COMMON AREAS	37,08 m²
INTERNAL BUILT AREA INCLUDING PP. COMMON AREAS	162,46 m²

EXTERNAL AREAS	
Uncovered laundry room	5,01 m²
Terrace pergola	19,46 m²
Uncovered terrace	96,15 m²
EXTERNAL USEFUL FLOOR AREA	120,62 m²

USEFUL FLOOR AREA SOLARIUM	59,36 m²
----------------------------	----------

REGARDING DECRETO BOJA 218/2005	
TOTAL USEFUL FLOOR AREA	116,96 m²
TOTAL BUILT AREA	173,09 m²



Penthouse 22A

The information contained may be modified during the course of the work execution due to technical or legal requirements, without implying any reduction in the overall level of qualities. The access steps to the dwelling and exits to courtyards may be altered according to the level of the streets and it is up to the D.F. to set the criteria.

The pool represented in the commercial plan of the solarium floor, and infographics, is not included in the project, nor in the sale price. It is an option for buyers, the cost of which will be added to the purchase price.

