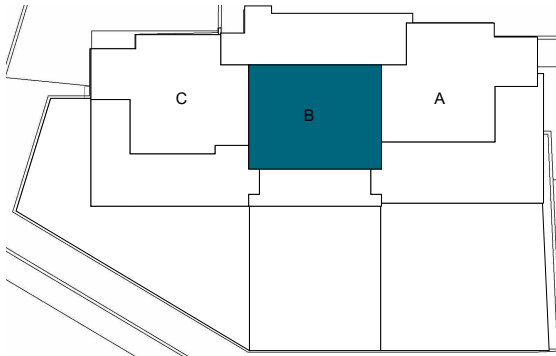
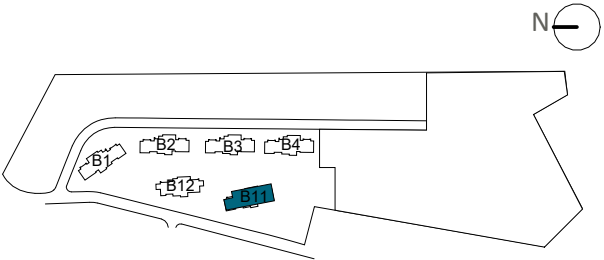


LOCATION



BLOCK 11

APPROXIMATE AREAS

Entrance	5,77 m²
Living room - Kitchen	32,94 m²
Hall	2,73 m²
Master bedroom	15,98 m²
Master bathroom	6,21 m²
Bedroom 2	12,09 m²
Bathroom 2	4,87 m²
INTERNAL USEFUL FLOOR AREA	80,59 m²

INTERNAL BUILT AREA	91,31 m²
P.P. COMMON AREAS	32,23 m²
INTERNAL BUILT AREA INCLUDING PP. COMMON AREAS	123,54 m²

EXTERNAL AREAS	
Covered terrace	27,11 m²
Uncovered terrace	4,89 m²
EXTERNAL USEFUL FLOOR AREA	32,00 m²

REGARDING DECRETO BOJA 218/2005	
TOTAL USEFUL FLOOR AREA	88,65 m²
TOTAL BUILT AREA	131,59 m²

Apartment 111B

The information contained may be modified during the course of the work execution due to technical or legal requirements, without implying any reduction in the overall level of qualities. The access steps to the dwelling and exits to courtyards may be altered according to the level of the streets and it is up to the D.F. to set the criteria.

