

VILLA 18 | R262

C/ EL SALVADOR, 36

Bedrooms	3
Bathrooms	4
Parking	2 cars

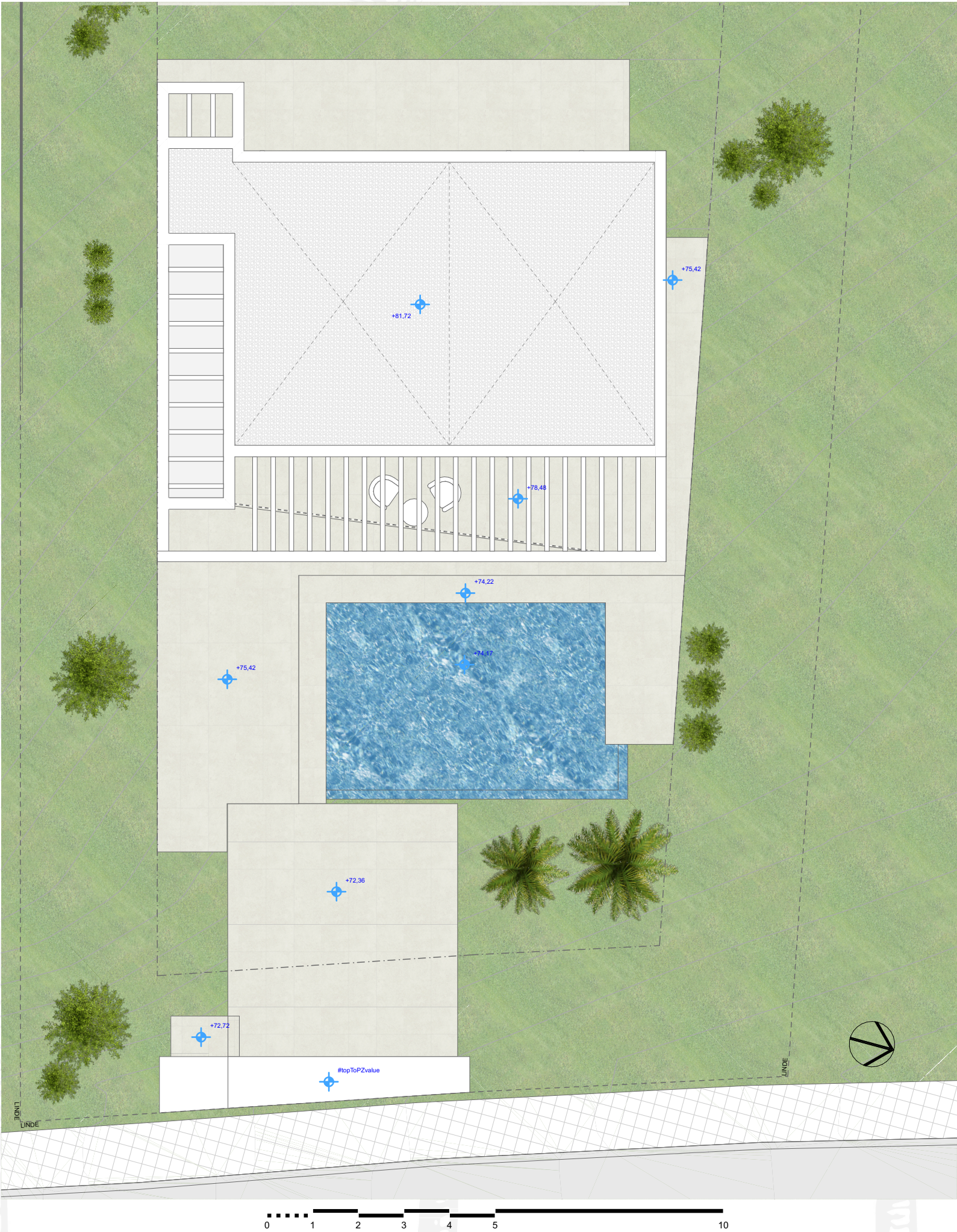
Built Area	248,25 sqm
Covered Terraces	12,18 sqm
Uncovered Terraces	89,14 sqm
Pool Area	25,41 sqm
Parking Area	32,79 sqm

Total Covered Area	260,43 sqm
Total Garden Area	309,09 sqm
Plot Surface	533,00 sqm

\*All the surfaces detailed in this floor plan correspond to built areas.

The floor plan is not final as it has been designed in accordance with the Building Execution Project and, consequently, KORK S.L. reserves the right to include whatever changes due to technical and/or legal imperatives required by any public Administration or Agency. These changes, in any case, will be in accordance with the progress of the construction work. The accessory elements (for example, including the kitchen) are merely for illustrative purposes. The rotation sense of doors and the distribution of sanitary fittings are not binding. The surface areas shown are approximate and, may be altered for technical and/or legal reasons in the course of the construction work.

ROOF TOP





VILLA 18 | R262

C/ EL SALVADOR, 36

Bedrooms	3
Bathrooms	4
Parking	2 cars

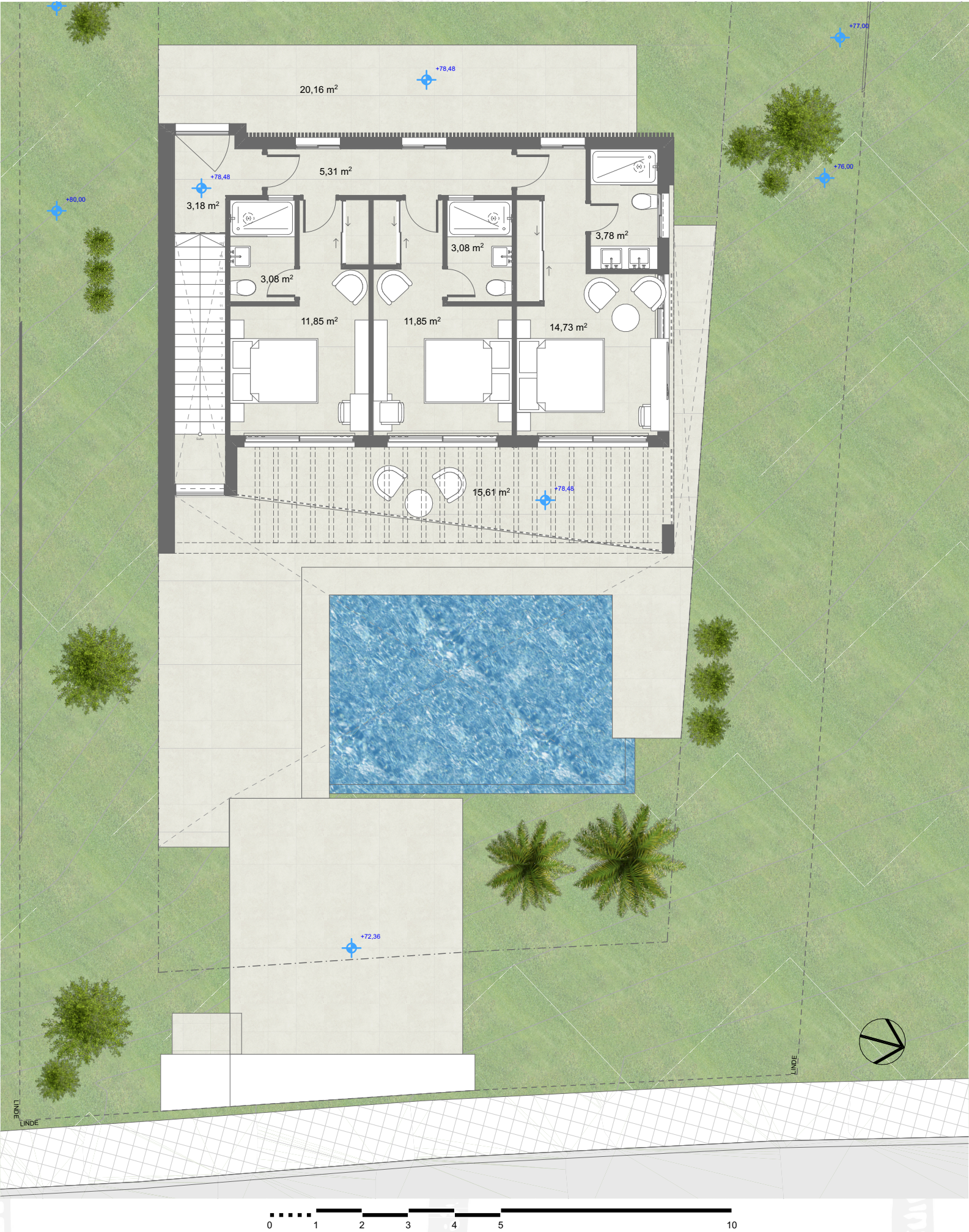
Built Area	248,25 sqm
Covered Terraces	12,18 sqm
Uncovered Terraces	89,14 sqm
Pool Area	25,41 sqm
Parking Area	32,79 sqm

Total Covered Area	260,43 sqm
Total Garden Area	309,09 sqm
Plot Surface	533,00 sqm

\*All the surfaces detailed in this floor plan correspond to built areas.

The floor plan is not final as it has been designed in accordance with the Building Execution Project and, consequently, KORK S.L. reserves the right to include whatever changes due to technical and/or legal imperatives required by any public Administration or Agency. These changes, in any case, will be in accordance with the progress of the construction work. The accessory elements (for example, including the kitchen) are merely for illustrative purposes. The rotation sense of doors and the distribution of sanitary fittings are not binding. The surface areas shown are approximate and, may be altered for technical and/or legal reasons in the course of the construction work.

FIRST FLOOR





# VIVACE

CONTEMPORARY VILLAS

## VILLA 18 | R262

C/ EL SALVADOR, 36

Bedrooms 3  
Bathrooms 4  
Parking 2 cars

Built Area 248,25 sqm  
Covered Terraces 12,18 sqm  
Uncovered Terraces 89,14 sqm  
Pool Area 25,41 sqm  
Parking Area 32,79 sqm

Total Covered Area 260,43 sqm  
Total Garden Area 309,09 sqm  
Plot Surface 533,00 sqm

\*All the surfaces detailed in this floor plan correspond to built areas.

The floor plan is not final as it has been designed in accordance with the Building Execution Project and, consequently, KORK S.L. reserves the right to include whatever changes due to technical and/or legal imperatives required by any public Administration or Agency. These changes, in any case, will be in accordance with the progress of the construction work. The accessory elements (for example, including the kitchen) are merely for illustrative purposes. The rotation sense of doors and the distribution of sanitary fittings are not binding. The surface areas shown are approximate and, may be altered for technical and/or legal reasons in the course of the construction work.

DEVELOPED

KORK

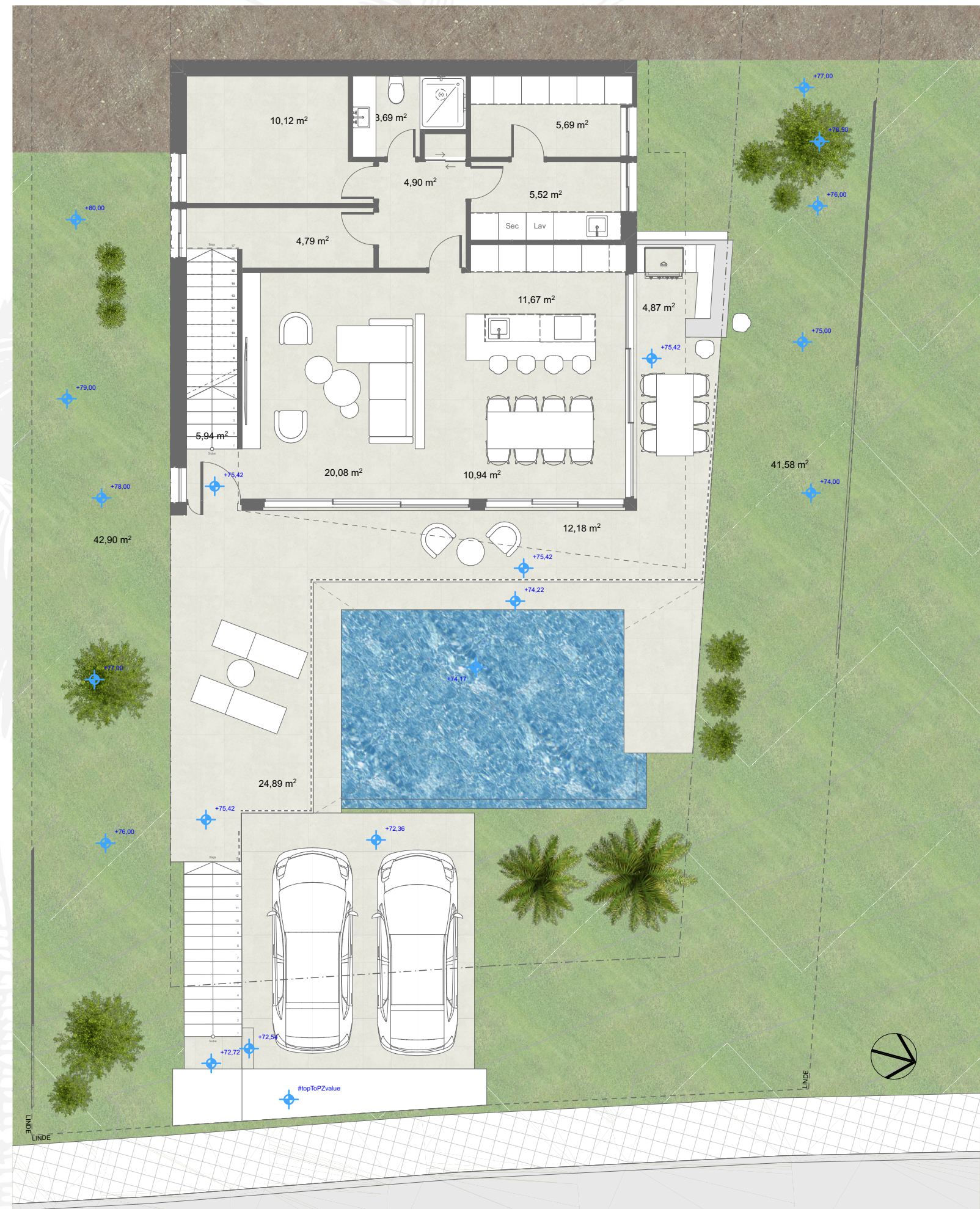
COMMERCIALIZED

Prime Invest

ARCHITECTURE

urbanika  
concept living SL

### GROUND FLOOR





VILLA 18 | R262

C/ EL SALVADOR, 36

Bedrooms	3
Bathrooms	4
Parking	2 cars

Built Area	248,25 sqm
Covered Terraces	12,18 sqm
Uncovered Terraces	89,14 sqm
Pool Area	25,41 sqm
Parking Area	32,79 sqm

Total Covered Area	260,43 sqm
Total Garden Area	309,09 sqm
Plot Surface	533,00 sqm

\*All the surfaces detailed in this floor plan correspond to built areas.

The floor plan is not final as it has been designed in accordance with the Building Execution Project and, consequently, KORK S.L. reserves the right to include whatever changes due to technical and/or legal imperatives required by any public Administration or Agency. These changes, in any case, will be in accordance with the progress of the construction work. The accessory elements (for example, including the kitchen) are merely for illustrative purposes. The rotation sense of doors and the distribution of sanitary fittings are not binding. The surface areas shown are approximate and, may be altered for technical and/or legal reasons in the course of the construction work.

BASEMENT

