

THE LIST - RÍO REAL
27 TOWNHOUSES PROJECT

The List Río Real is a complex made up of 27 townhouses which boast excellent quality finishes. The project will offer 2 types of semi-detached homes, with 4 and 5 bedrooms, spread over the basement, ground floor, and first floor. They also include a solarium with a private swimming pool, offering incredible sea views, tranquillity, and privacy.

PARCELA: PA-RR-9.

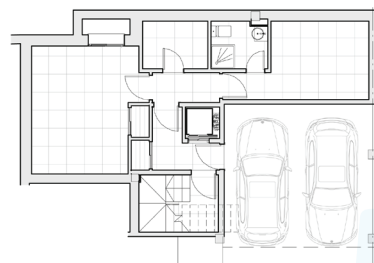
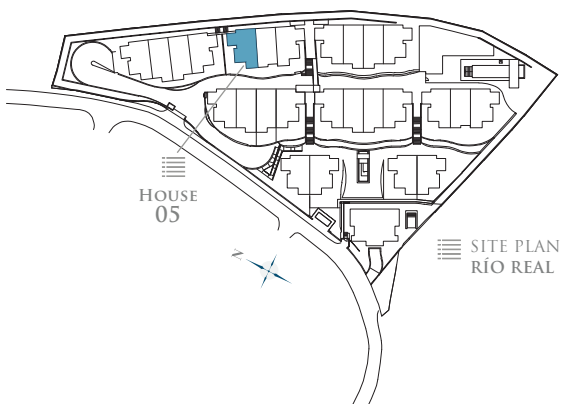
"LOMAS DEL POZUELO". MARBELLA

TOTAL PLOT AREA: 11.973,45 M²

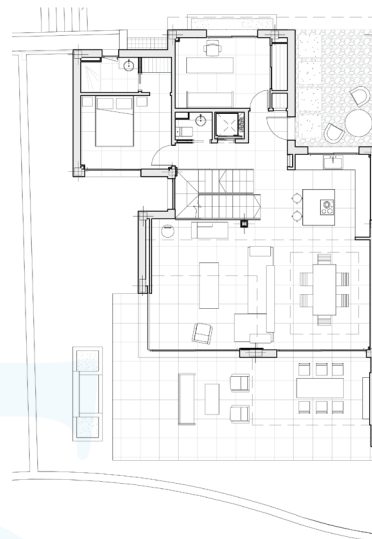
·NOTE: This document is informative. The floor plans and areas expressed may undergo variations due to technical demands of the project. The furniture shown is not included being merely illustrative.

5
FLOOR PLAN

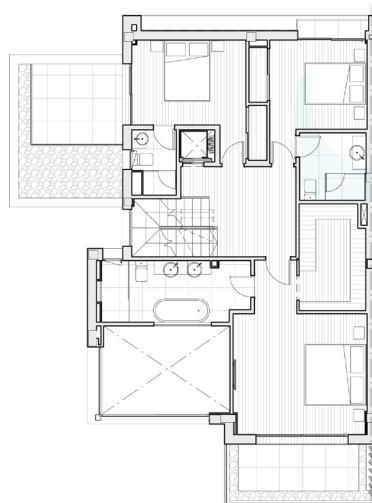
FLOORS
- HOUSE FIVE -



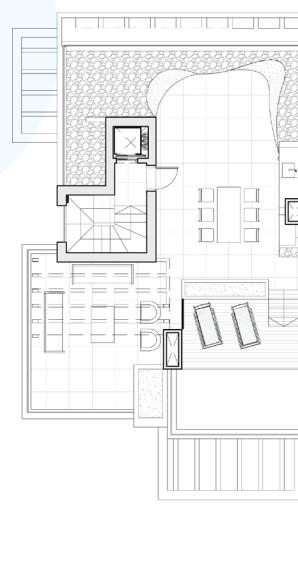
- BASEMENT -



- GROUND FLOOR -



- FIRST FLOOR -



- ROOF FLOOR -

TOTAL USEFUL AREA:
249,40 m²

TOTAL USEFUL AREA
ACCORDING TO RD 218/2005:
274,34 m²

BUILT AREA

LIVING AREA **228,15 m²**

TERRACES **190,80 m²**

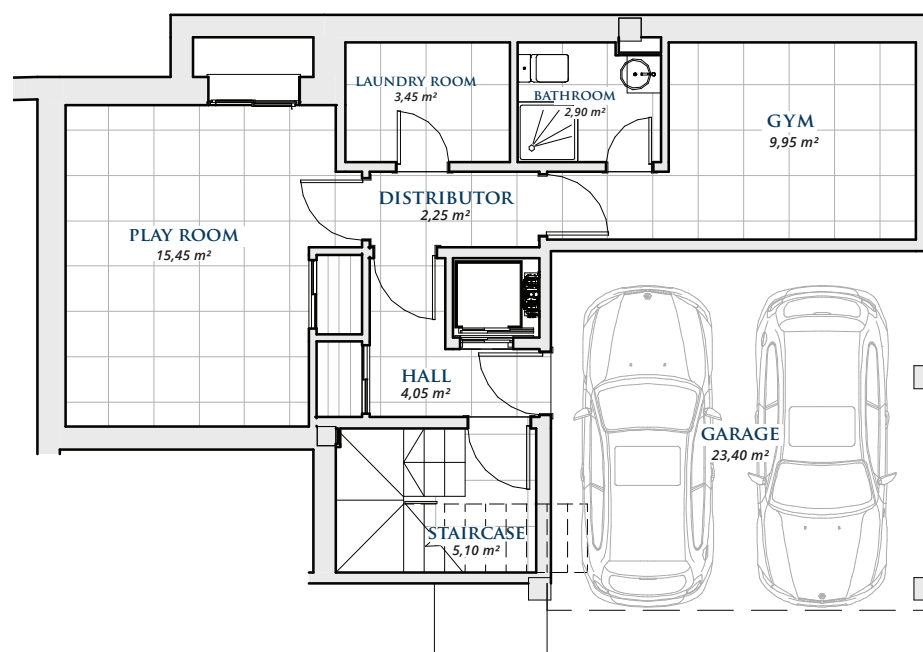
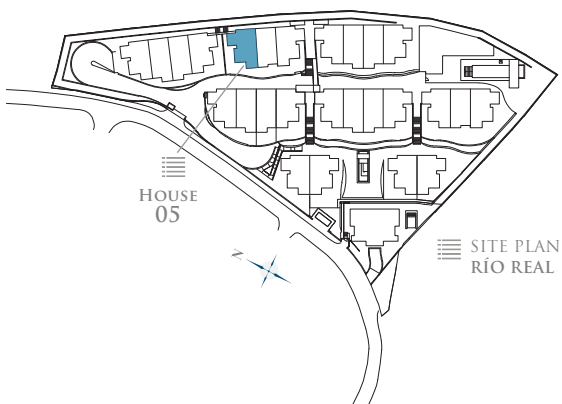
BASEMENT **79,41 m²**

PRIVATE GARDEN **61,21 m²**

TOTAL BUILT AREA: **498,36 m²**

5
FLOOR PLAN

BASEMENT
- HOUSE FIVE -



BASEMENT

BASEMENT	55,76 m ²
GARAGE	23,65 m ²
TOTAL BUILT AREA:	79,41 m²

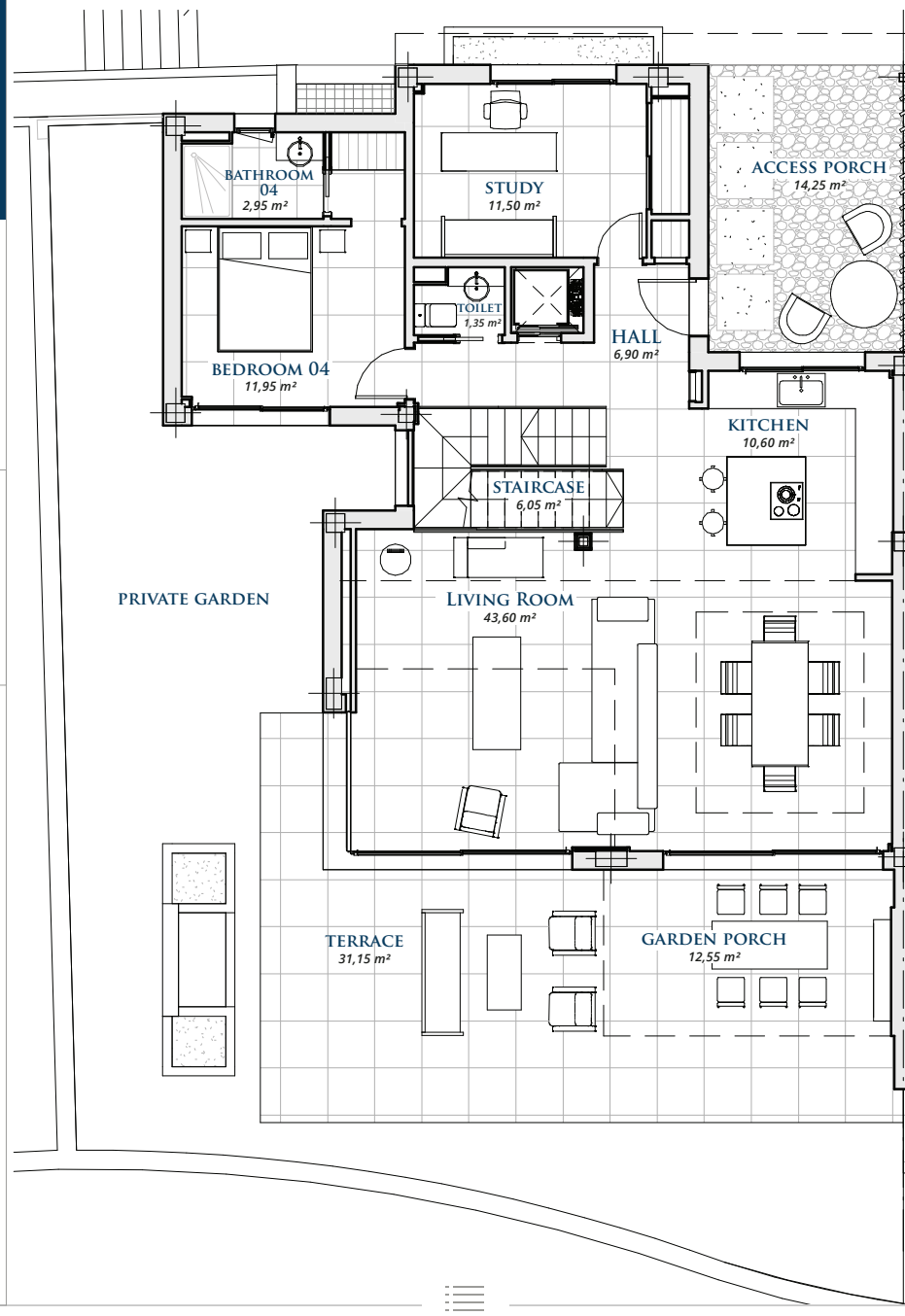
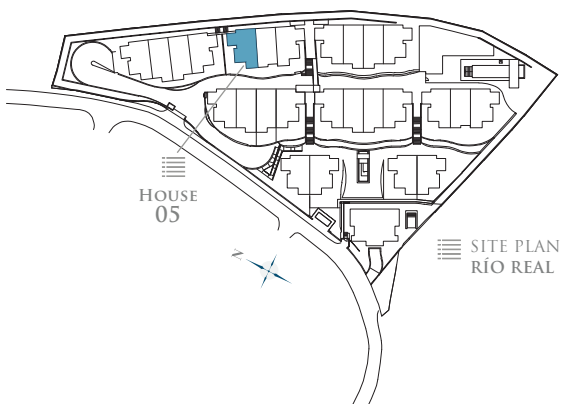
* Basements are subject to modifications due to installation requirements.

GRAPHIC SCALE 1:100



5
FLOOR PLAN

GROUND FLOOR
- HOUSE FIVE -



GROUND FLOOR

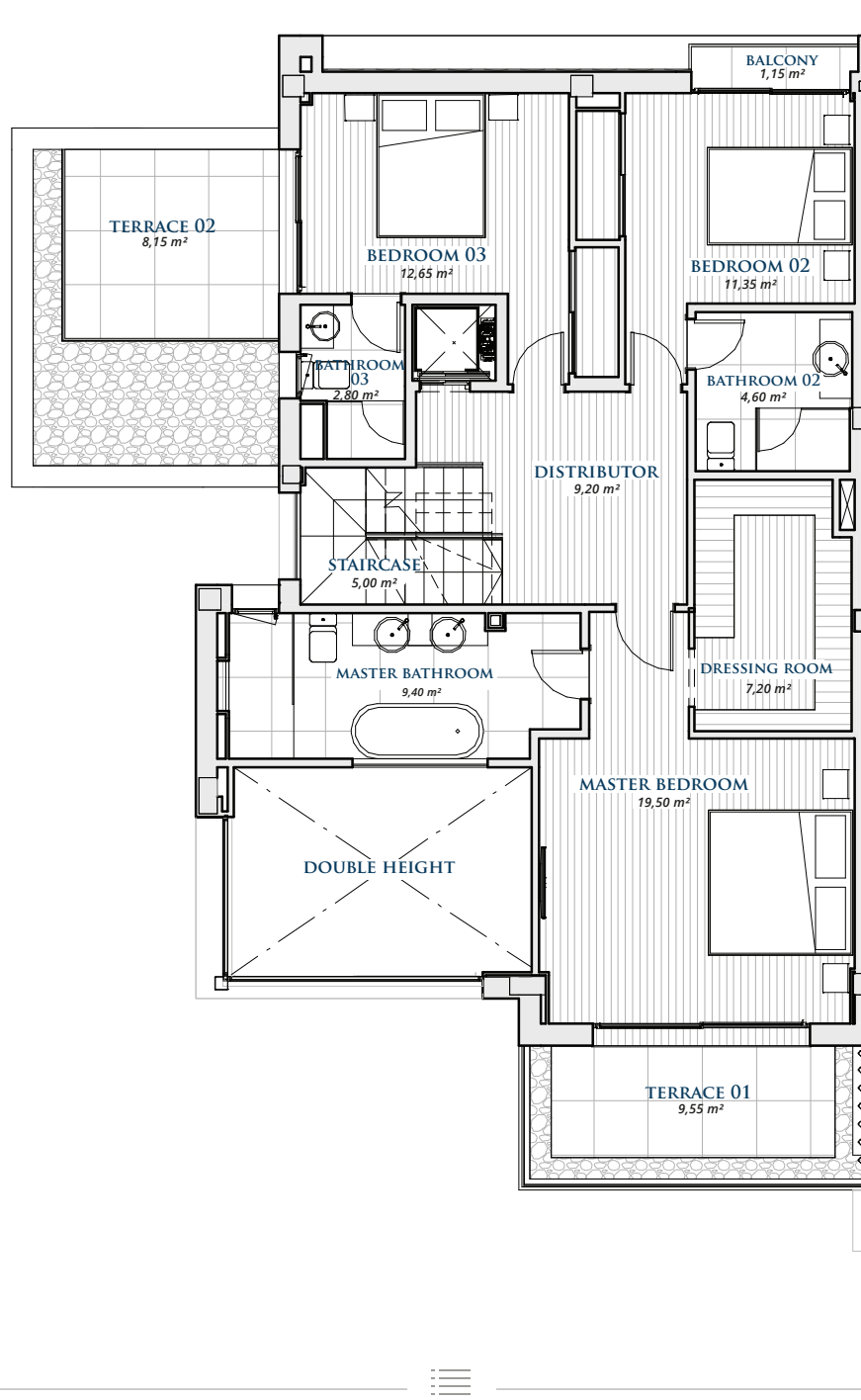
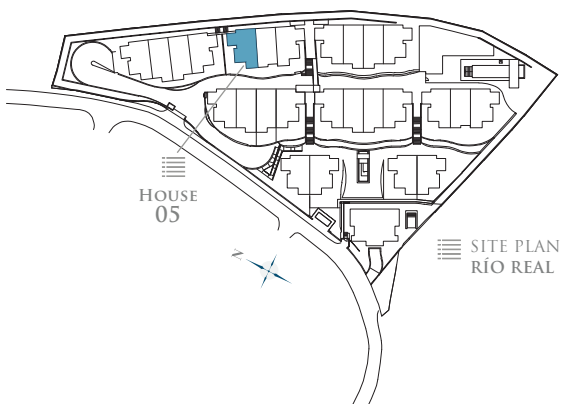
LIVING AREA	114,55 m ²
TERRACE	61,60 m ²
TOTAL BUILT AREA:	176,15 m ²

GRAPHIC SCALE 1:100



5
FLOOR PLAN

FIRST FLOOR
- HOUSE FIVE -



FIRST FLOOR

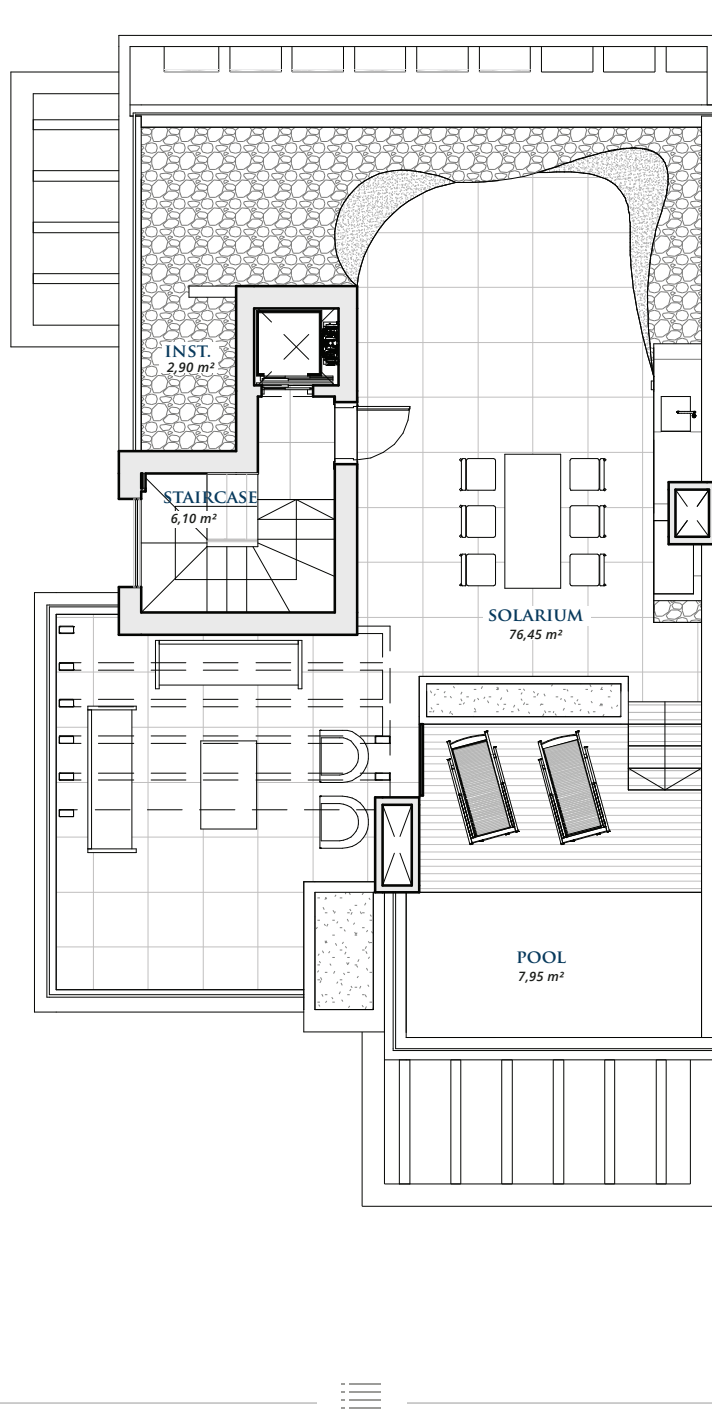
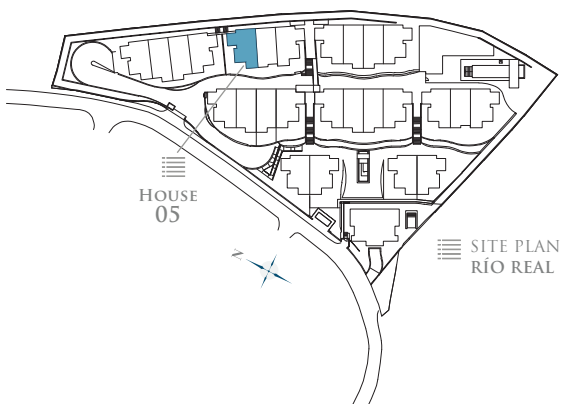
LIVING AREA	101,85 m ²
TERRACE	31,70 m ²
TOTAL BUILT AREA:	133,55 m ²

GRAPHIC SCALE 1:100



5
FLOOR PLAN

ROOF FLOOR
- HOUSE FIVE -



ROOF FLOOR

CLOSED AREA	11,75 m ²
TERRACE	97,50 m ²
TOTAL BUILT AREA:	109,25 m ²

GRAPHIC SCALE 1:100

