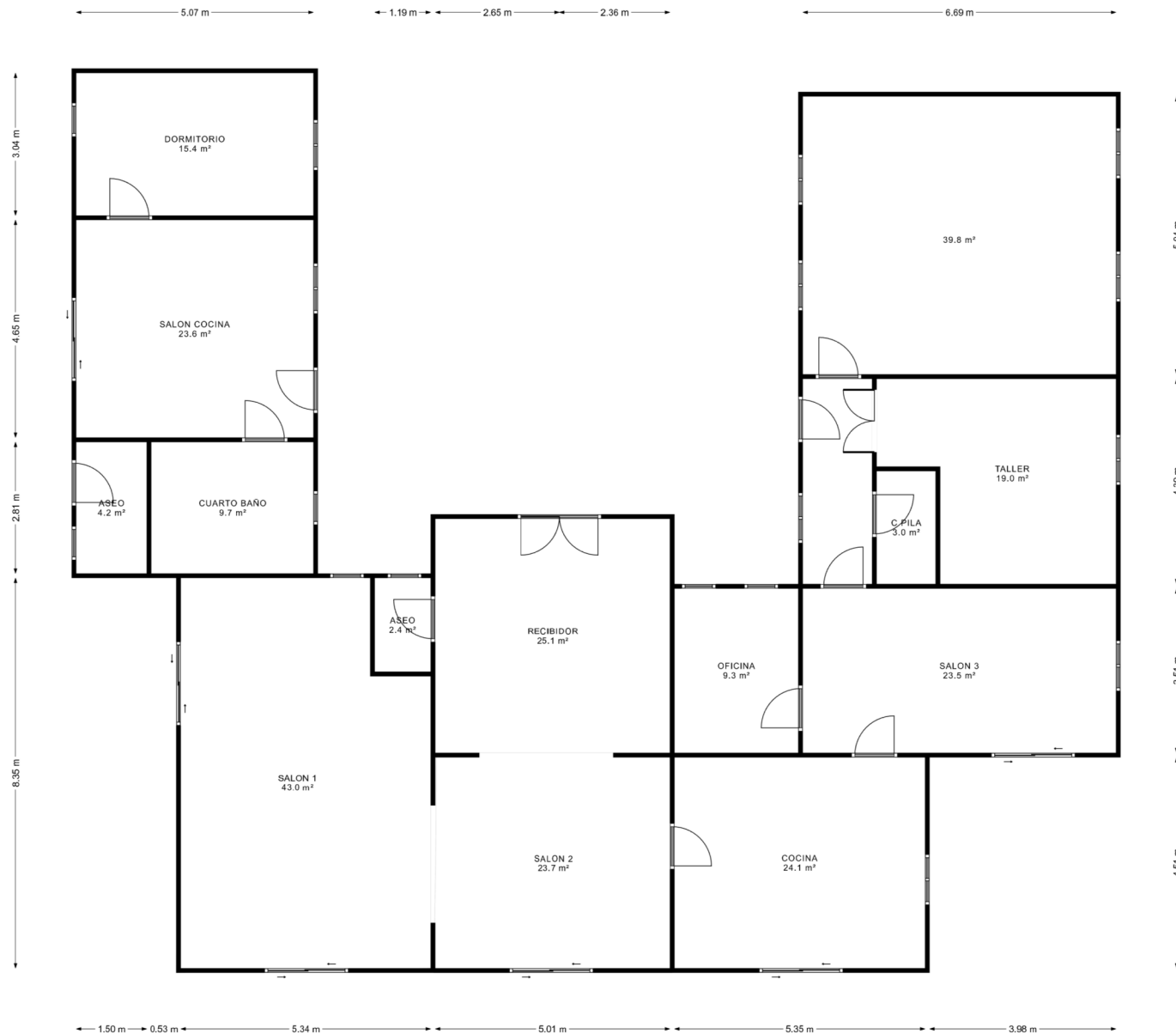
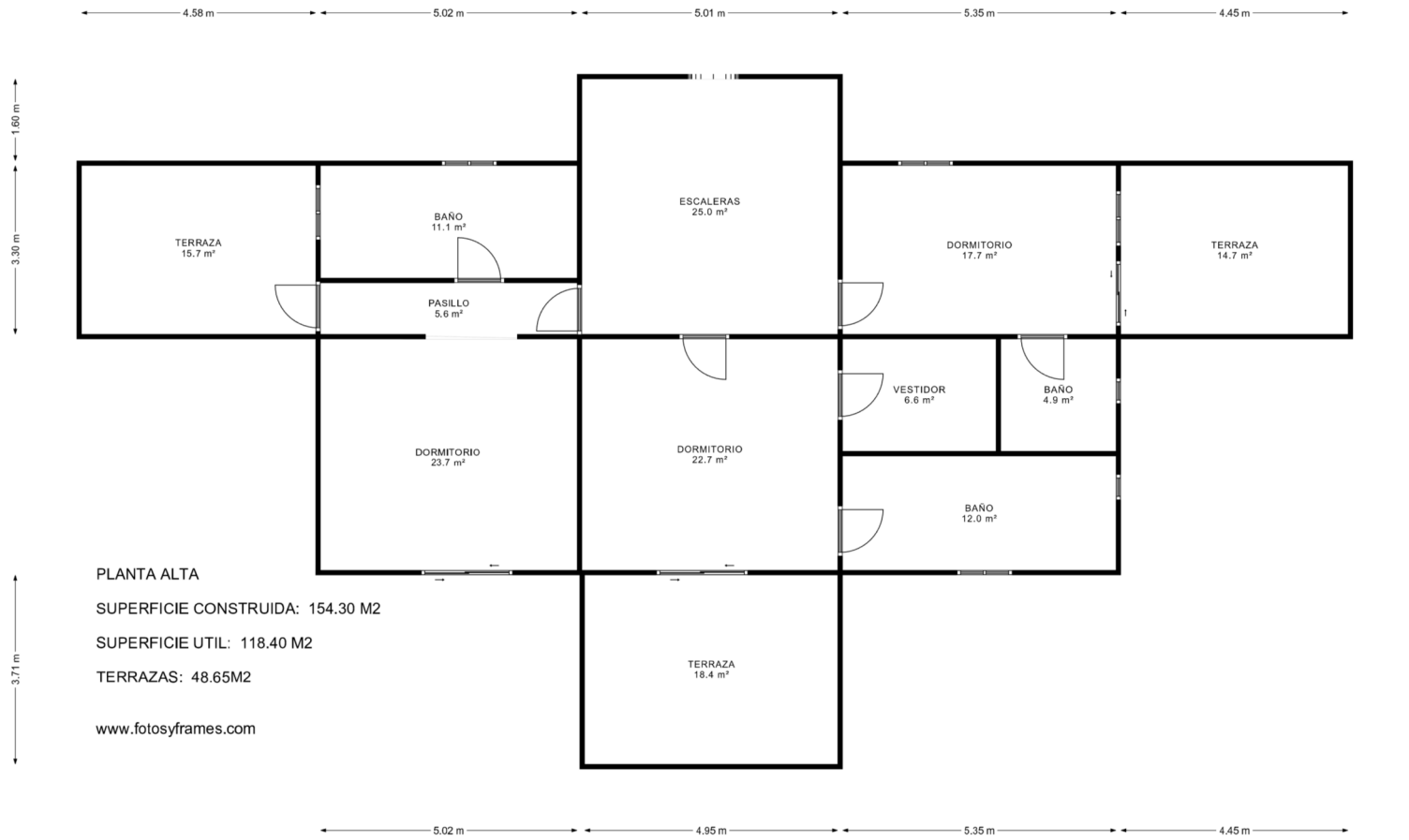
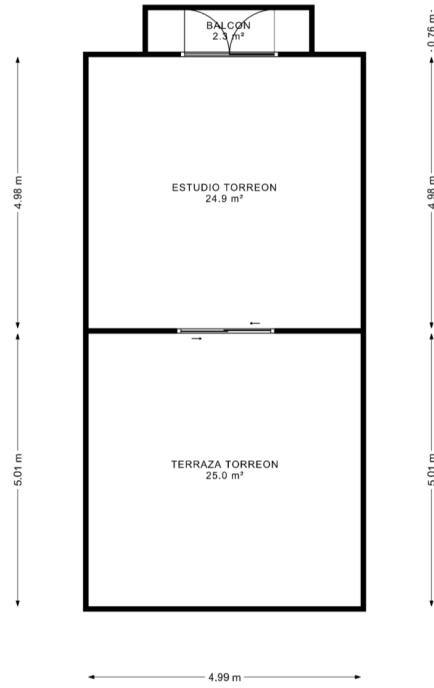


PLANTA BAJA
 SUPERFICIE CONSTRUIDA 324.30 M2
 SUPERFICIE UTIL 276.30 M2
 PORCHE 1001.15 MW
 TERRAZA 21.09 M2
 www.fotosyframes.com





← 0.99 m → ← 2.96 m →



PLANTA TORREON
SUPERFICIE CONSTRUIDA 33.06M 2
SUPERFICIE UTIL: 20.6 M2
TERRAZA 25 M2
www.fotosyframes.com