

# ALCHEMIST RESIDENCES

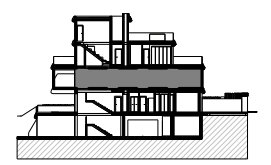
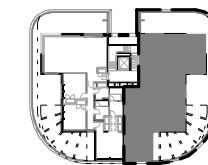
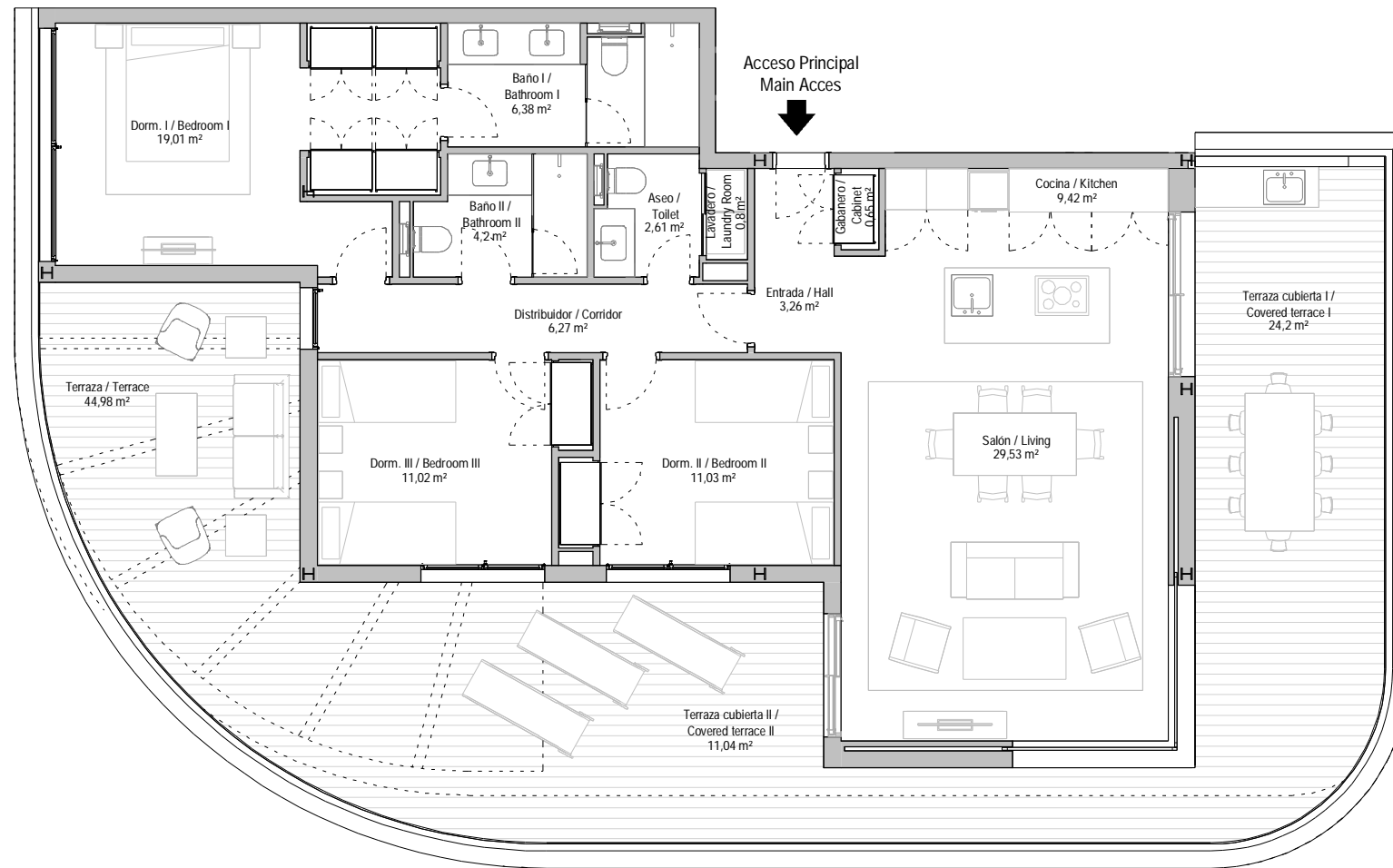
## BUILDING 6 ELEMENTS

# 611B



### CUADRO DE SUPERFICIES / AREAS

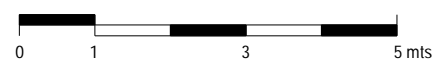
	SUP. ÚTIL USABLE AREAS	SUP. CONSTRUIDA BUILT AREA
Vivienda / Apartment	104 m <sup>2</sup>	122 m <sup>2</sup>
Terraza cubierta / Covered terrace	35 m <sup>2</sup>	35 m <sup>2</sup>
Terraza descubierta / Terrace uncovered	45 m <sup>2</sup>	45 m <sup>2</sup>
<b>Total</b>	<b>184 m<sup>2</sup></b>	<b>202 m<sup>2</sup></b>
S.C.U.P. / C.A.W.E.U.		0 m <sup>2</sup>
DECRETO 218/2005 / DECREE 218/2005		m <sup>2</sup>
Sup. útil interior/ Interior Usable Area		115 m <sup>2</sup>



### SITUACIÓN / POSITION ON PLOT



3BD-First floor



La información contenida en este documento, incluido mobiliario, tiene mero carácter comercial e ilustrativo, pudiendo sufrir variaciones por razones técnicas, comerciales o jurídicas durante la ejecución de las obras. S.C.U.P. significa Superficie Comunitaria de Uso Privativo. The information contained in this floorplan, including furniture, is of a purely commercial and illustrative nature, and may undergo variations for technical, commercial or legal reasons during the execution of the works. C.A.W.E.U. stands for Communal Area With Exclusive Use.