

# ALCHEMIST RESIDENCES

## BUILDING 4 SOL

### 4 2 0 B

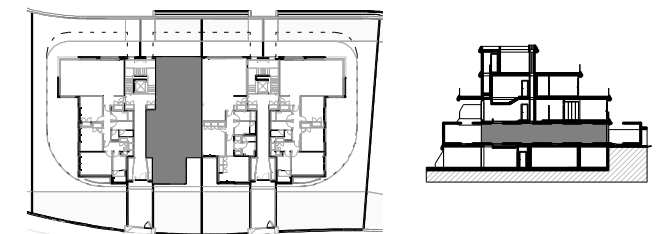
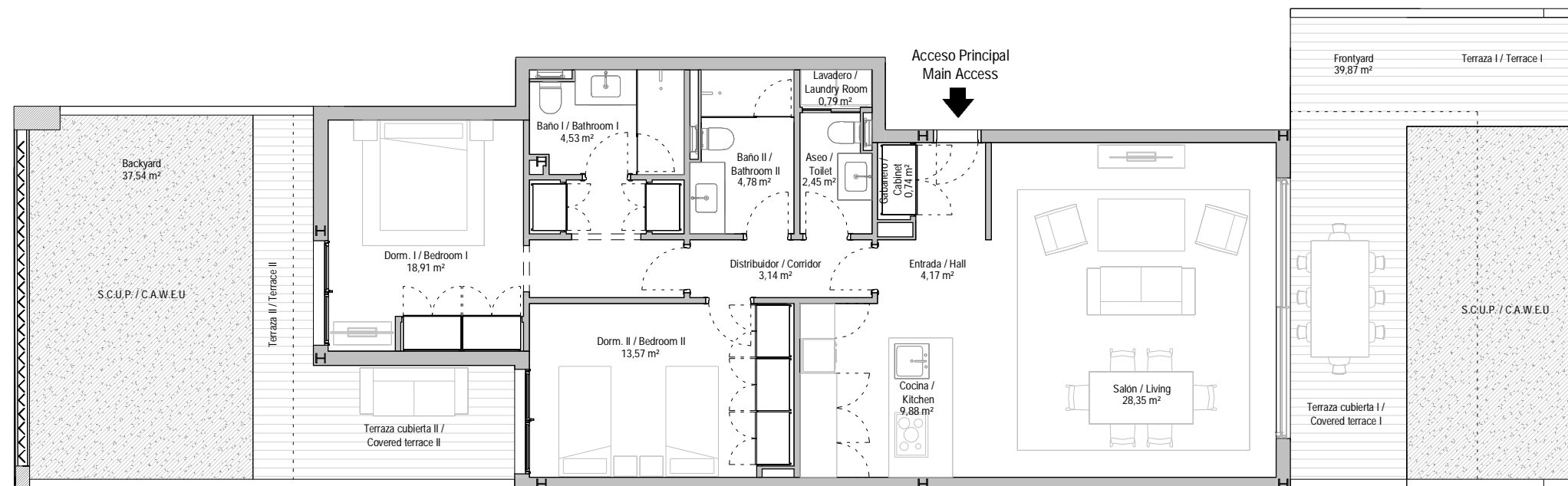


#### CUADRO DE SUPERFICIES / AREAS

	SUP. ÚTIL USABLE AREAS	SUP. CONSTRUIDA BUILT AREA
Vivienda / Apartment	91 m <sup>2</sup>	103 m <sup>2</sup>
Terraza cubierta / Covered terrace	19 m <sup>2</sup>	19 m <sup>2</sup>
Terraza descubierta / Terrace uncovered	16 m <sup>2</sup>	18 m <sup>2</sup>
<b>Total</b>	<b>168 m<sup>2</sup></b>	<b>140 m<sup>2</sup></b>
S.C.U.P. / C.A.W.E.U.		42 m <sup>2</sup>

DECRETO 218/2005 / DECREE 218/2005

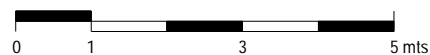
Sup. útil interior/ Interior Usable Area m<sup>2</sup>  
100 m<sup>2</sup>



#### SITUACIÓN / POSITION ON PLOT



#### 2BD-Groundfloor



La información contenida en este documento, incluido mobiliario, tiene mero carácter comercial e ilustrativo, pudiendo sufrir variaciones por razones técnicas, comerciales o jurídicas durante la ejecución de las obras. S.C.U.P. significa Superficie Comunitaria de Uso Privativo. The information contained in this floorplan, including furniture, is of a purely commercial and illustrative nature, and may undergo variations for technical, commercial or legal reasons during the execution of the works. C.A.W.E.U. stands for Communal Area With Exclusive Use.