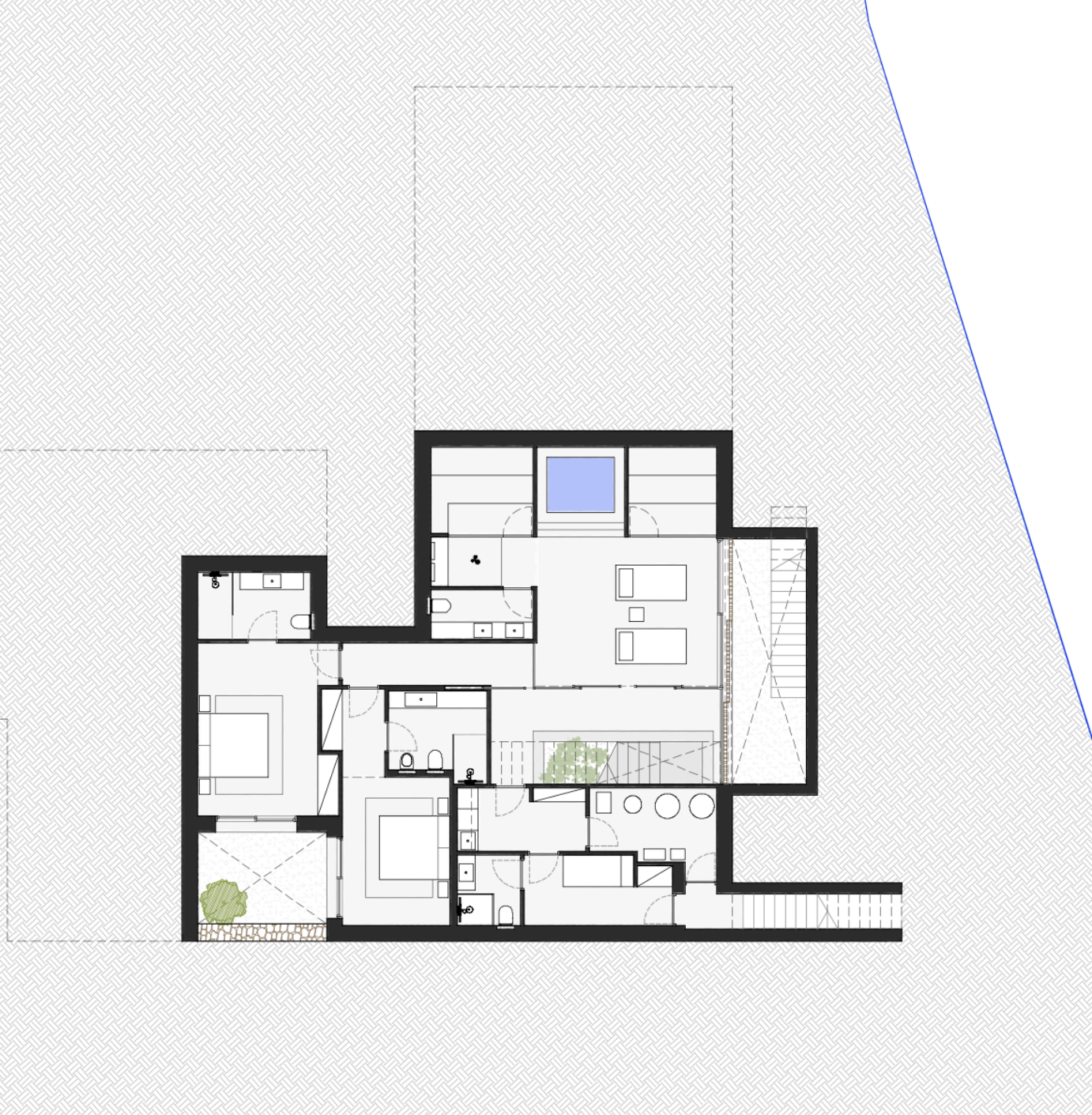




Ground Floor

- Entrance Hall
- Guest toilette
- Open-plan kitchen
- Study
- Living and dining rooms
- Fireplace
- Large covered terrace
- Infinity swimming pool
- Pool lounge
- Sundeck with seaviews
- Three ensuite bedrooms

Internal sq m: 284,82 sq m



Lower ground

- Two ensuite bedrooms
- SPA&Gym
- Staff ensuite bedroom
- Laundry room
- Technical room
- Two patios

Internal sq m: 149,98 sq m



Internal built areas

Ground floor	284,82 sq m
Lower ground floor	149,98 sq m
Total internal built area	434,64 sq m

Outdoor built areas

Total covered outdoor terraces	49,84 sq m
Swimming pool, water features and pool lounge	75,57 sq m
Garage	55 sq m

Plot size	1.935 sq m
PRICE	€ 3,95