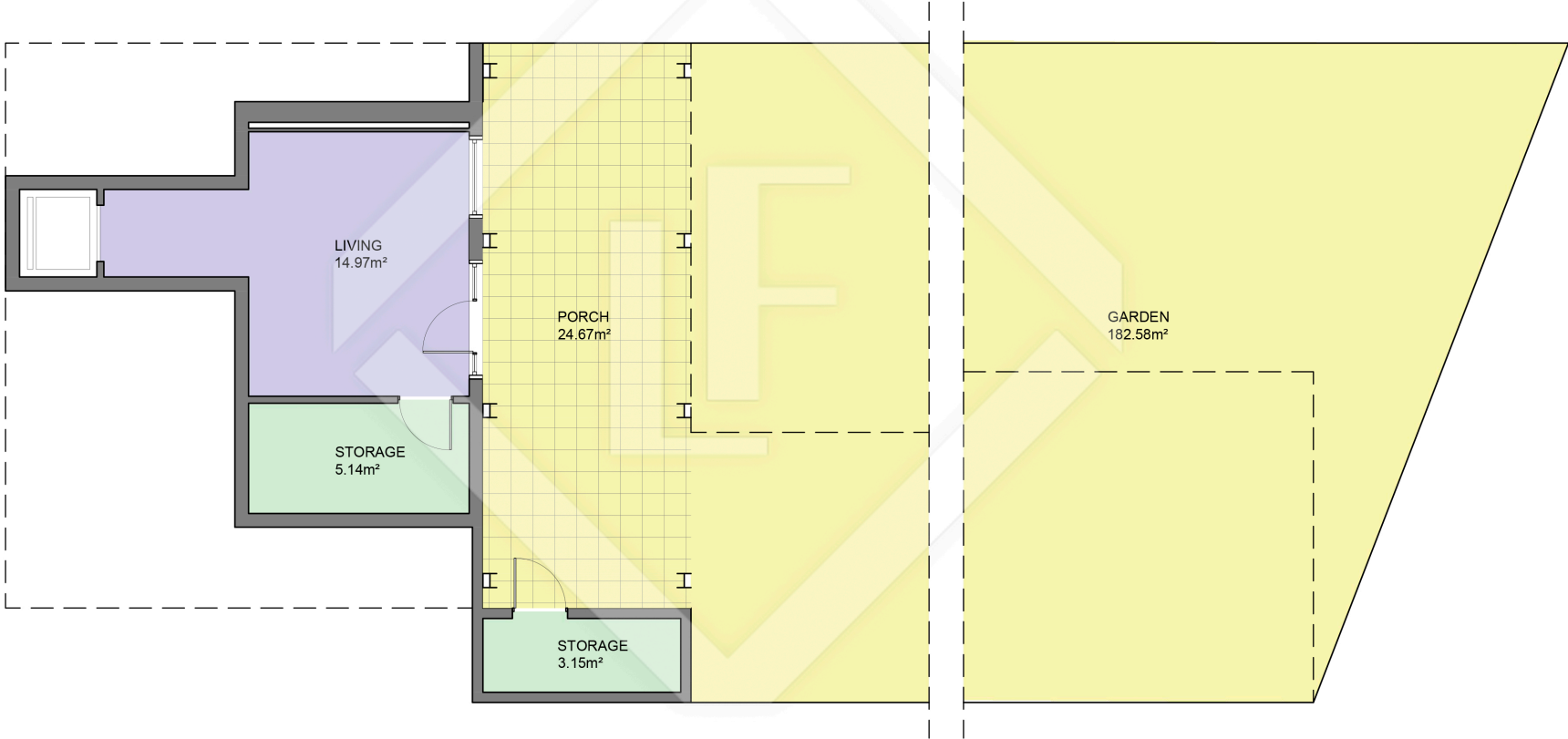


BCN8165



LUCAS FOX  
INTERNATIONAL PROPERTIES

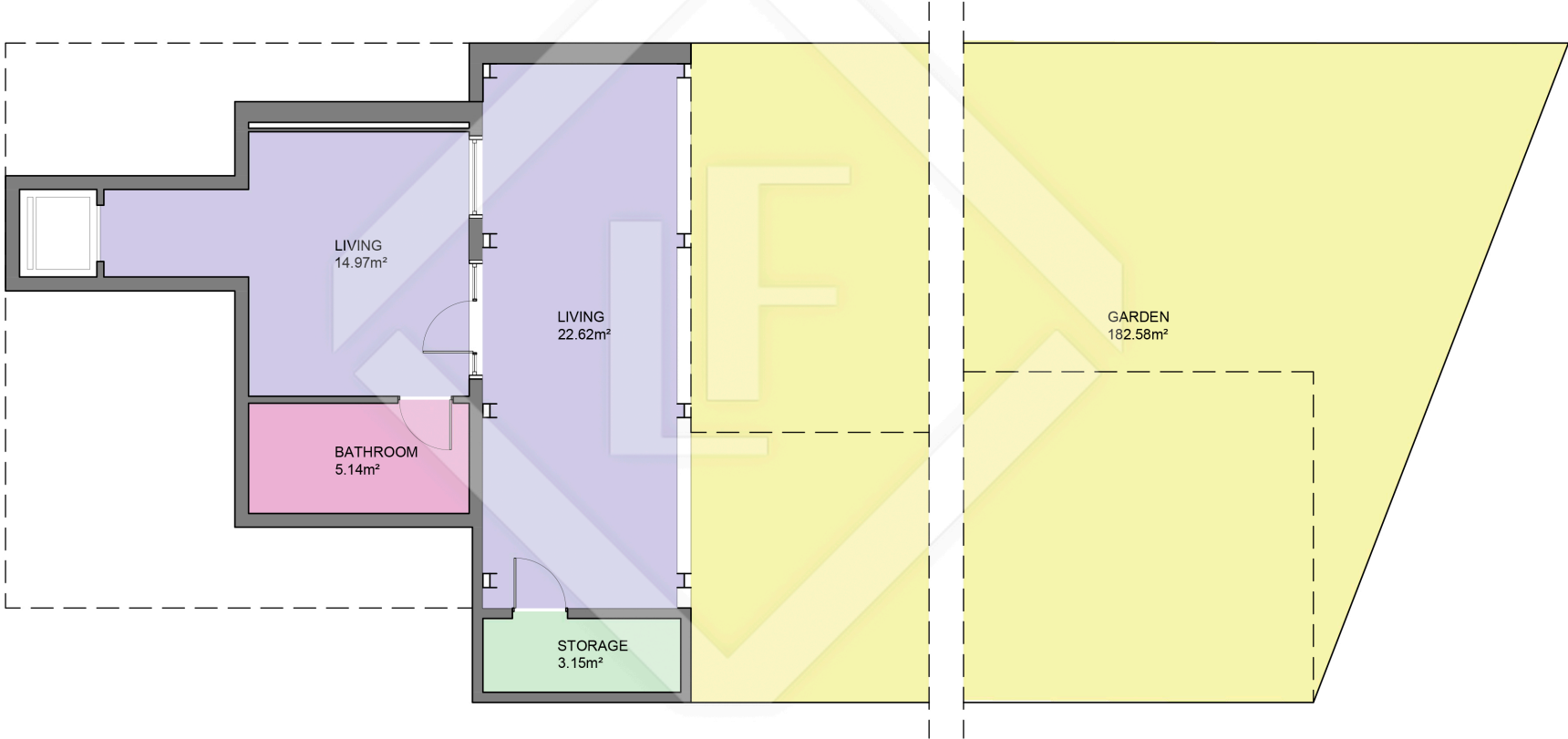
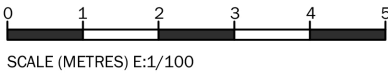
Measurements TOTAL HOUSE	
INTERIOR (Useful surface)	128.11m²
Exterior surface	326.33m²
Built surface	183.27m²
Terrain surface	292.00m²

Measurements BASEMENT FLOOR	
INTERIOR (Useful surface)	23.27m²
Exterior surface	207.25m²
Built surface	31.61m²



Scale in metres. Indicative only. Dimensions are approximate. All information contained here in is gathered from sources we believe to be reliable. However we cannot guarantee its accuracy and interested persons should rely on their own enquiries.

BCN8165P



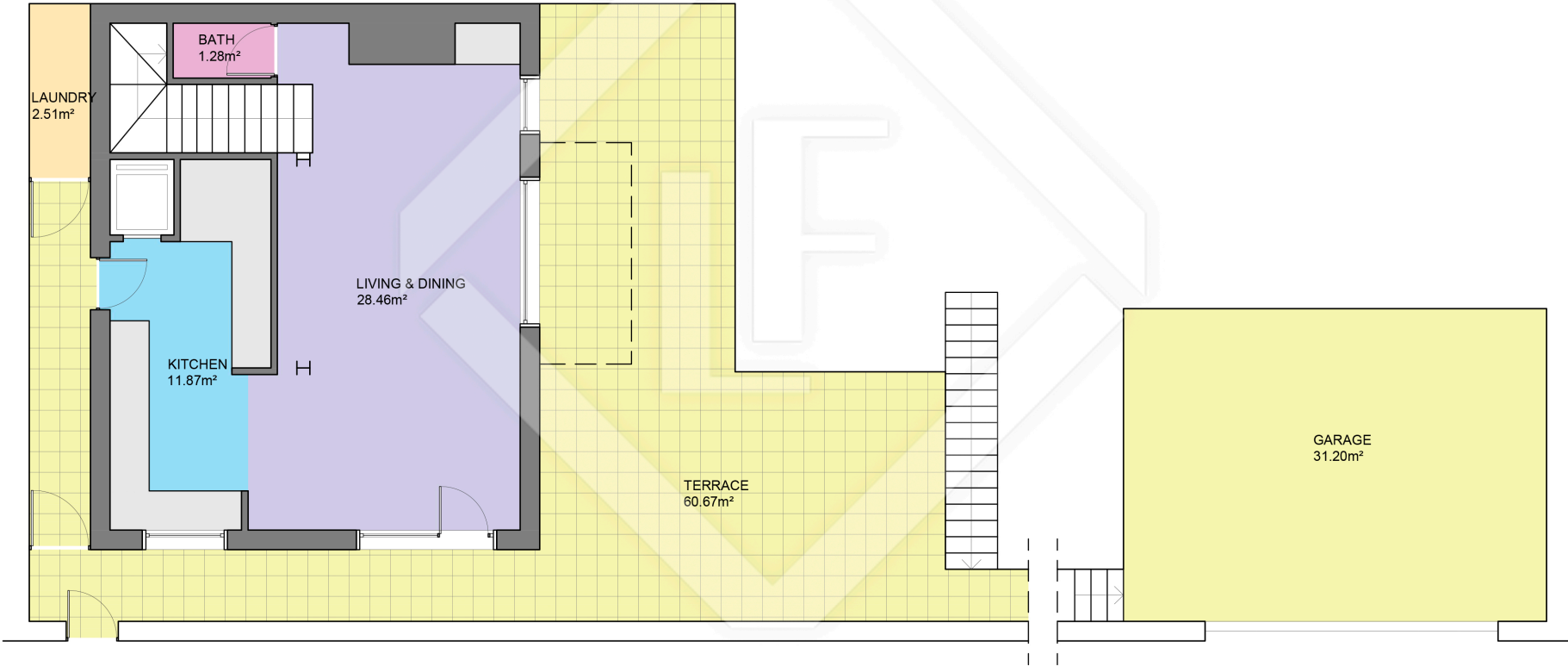
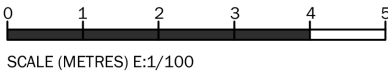
LUCAS FOX  
INTERNATIONAL PROPERTIES



Scale in metres. Indicative only. Dimensions are approximate. All information contained here in is gathered from sources we believe to be reliable. However we cannot guarantee its accuracy and interested persons should rely on their own enquiries.

Measurements BASEMENT FLOOR	
INTERIOR (Useful surface)	45.89m <sup>2</sup>
Garden	182.58m <sup>2</sup>
Built surface	56.56m <sup>2</sup>

BCN8165

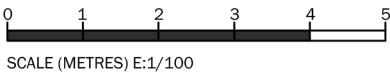


LUCAS FOX  
INTERNATIONAL PROPERTIES

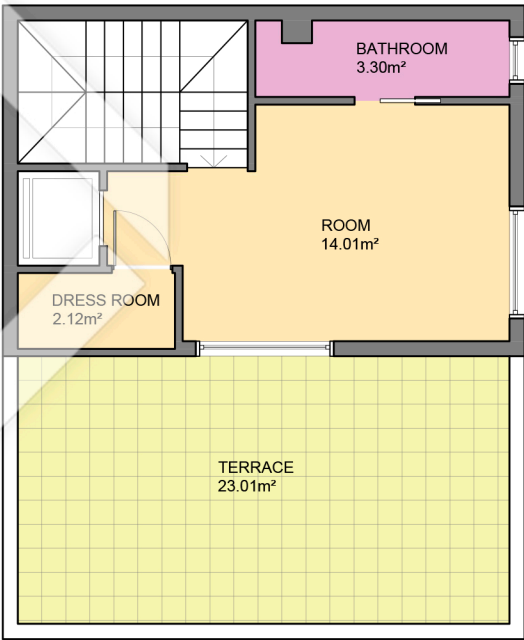


Scale in metres. Indicative only. Dimensions are approximate. All information contained here in is gathered from sources we believe to be reliable. However we cannot guarantee its accuracy and interested persons should rely on their own enquiries.

Measurements GROUND FLOOR	
INTERIOR (Useful surface)	44.13m <sup>2</sup>
Terrace	60.67m <sup>2</sup>
Garage	31.20m <sup>2</sup>
Built surface	62.23m <sup>2</sup>



FIRST FLOOR



SECOND FLOOR

LUCAS FOX  
INTERNATIONAL PROPERTIES

Measurements FIRST & SECOND FLOOR			
FIRST FLOOR		SECOND FLOOR	
INTERIOR (Useful surface)	41.28m²	INTERIOR (Useful surface)	19.43m²
Balcony	4.20m²	Balcony	23.01m²
Built surface	57.82m²	Built surface	32.01m²



Scale in metres. Indicative only. Dimensions are approximate. All information contained here in is gathered from sources we believe to be reliable. However we cannot guarantee its accuracy and interested persons should rely on their own enquiries.