

AS HIGH AS YOU CAN GO



saüc
sarrià





INTRO

AS **HIGH** AS YOU CAN GO

These are city homes with views to the horizon.

SAÛC 12 is Barcelona's highest development and just minutes from the city centre.

In Barcelona's exclusive Sarrià neighbourhood, six astonishing villas rise from the hillside and reach for the heavens.

AS GOOD AS YOU CAN GET

Impeccable style
and complete privacy.

SAÜC 12 is an expression of
its environment. Mediterranean
materials over multiple levels,
creating a horizontal architecture
with uplifting elegance.





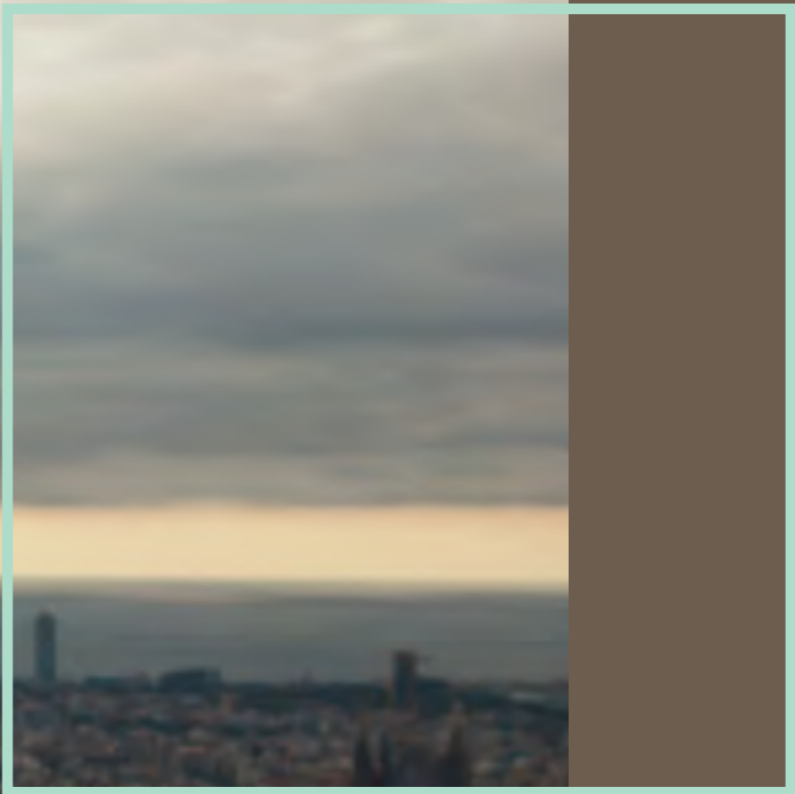
THE PROJECT

A **VIEW** FROM THE **TOP**

SAÜC12 offers a view from the top – in every respect.

These six villas, surrounded by a natural park, are the highest development in Barcelona.

From the hillside of Can Caralleu in Sarrià, each villa offers an unrivalled vantage point across the city and the sea beyond. The Barcelona skyline is below but the heart of the city is within easy reach.



THE LOCATION

FAR FROM
THE **NOISE**,
CLOSE TO
THE **ACTION**

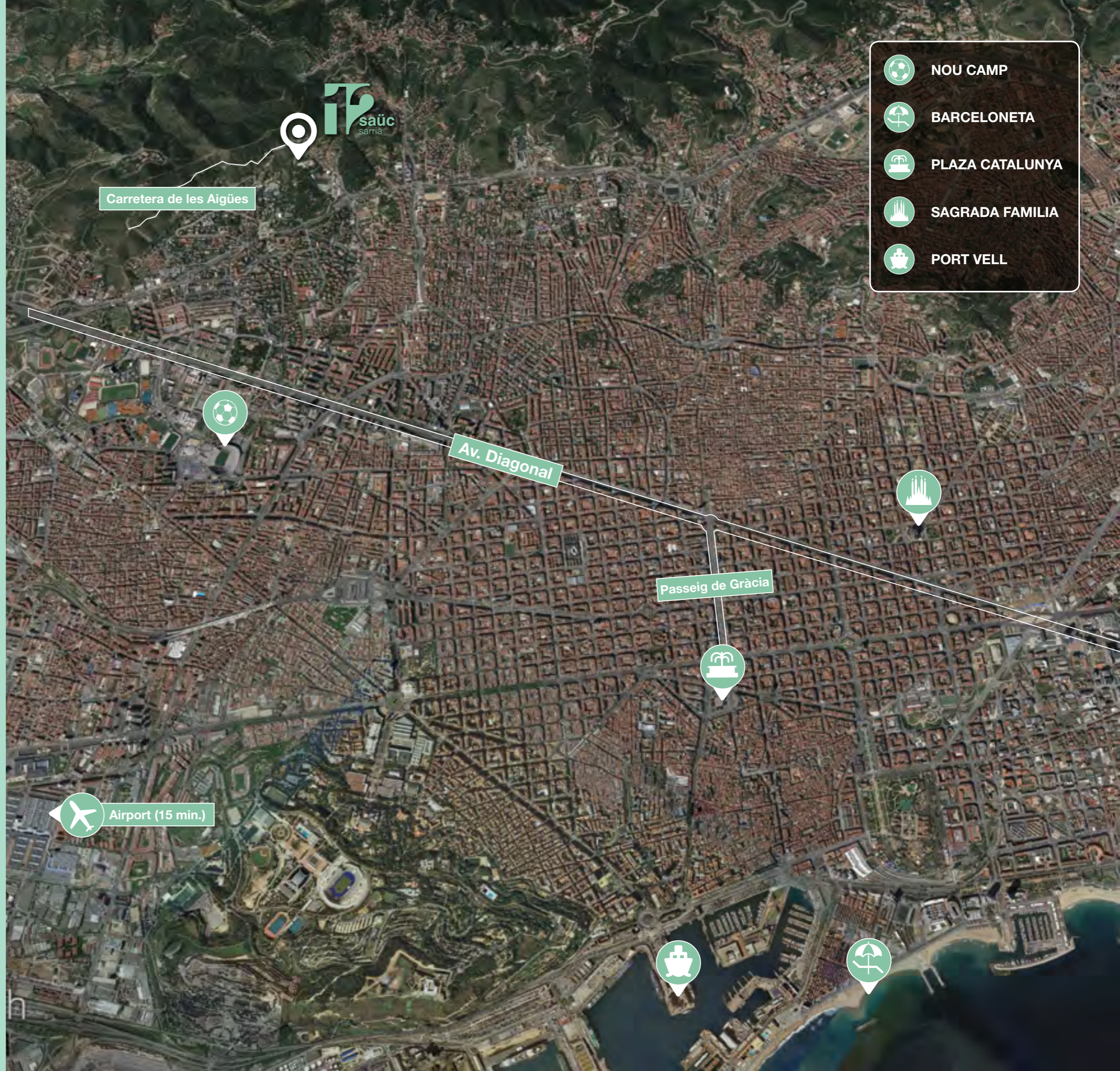
SAÜC 12 is located in the hillside neighbourhood of Can Caralleu in the uptown district of Sarrià, just minutes from the very centre of Barcelona.

THE LOCATION

SAÜC 12 is far from the noise but close to the action.

The centre of Barcelona, one of the world's greatest cities, is just a few minutes drive away. The B-20 ring road passes nearby, providing rapid access to the airport and the region's main motorways.

Highly reputable schools, local amenities and first-rate sports facilities are close at hand, creating extra free time to enjoy life.





THE VIEWS

HIGH ON THE HILLS

High on the hills above Sarrià, the views from **SAÜC12** have no limit.

All of Barcelona lies below, alive by day and sparkling with lights by night. Beyond the city skyline is the Mediterranean sea, stretching to the horizon.

Watch yachts sailing past and the constant, slow ballet of cruise liners and cargo ships around one of Spain's biggest ports.

After sunset, the stars come out, watched each night by the nearby Fabra Observatory, built here where the skies are clearest.

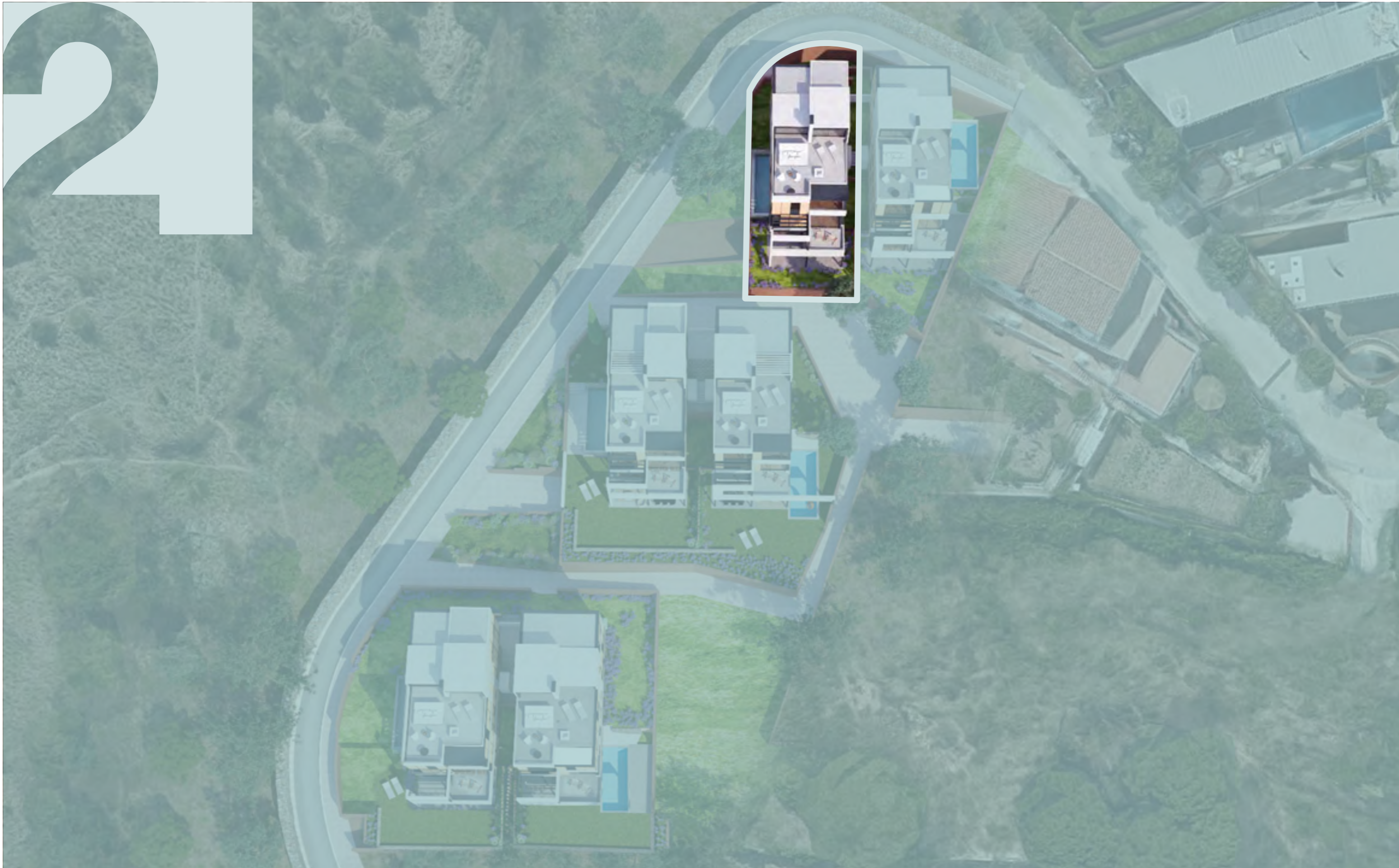


THE PROPERTIES

THE **SAÜC12** VILLAS

Architecture rooted
in the local landscape.

2



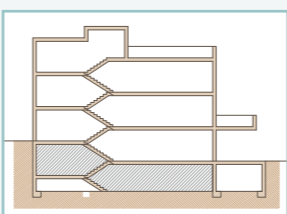
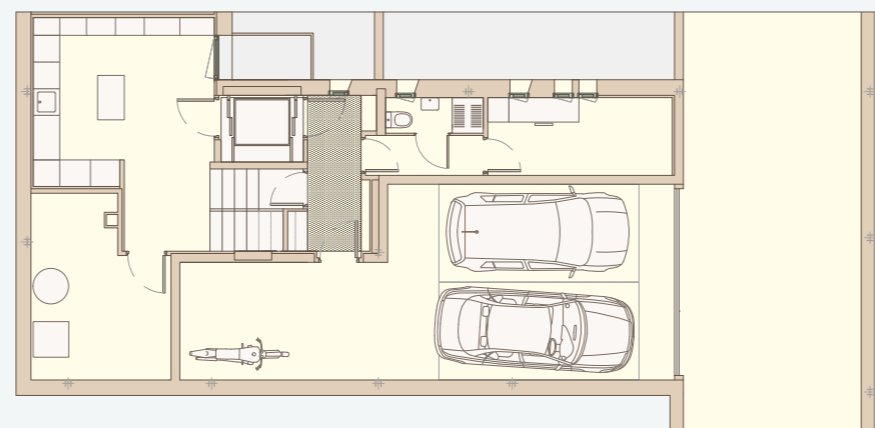
CASA 2 / VILLA 2

Superfície parcela **350m²**
Superfície construïda **480m²**
Piscina **22m²**

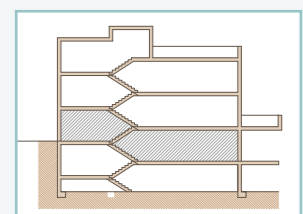
Plot area **350m²**
Built area **480m²**
Pool **22m²**



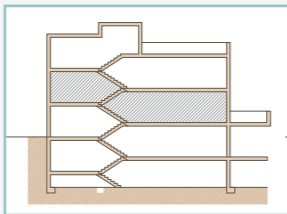
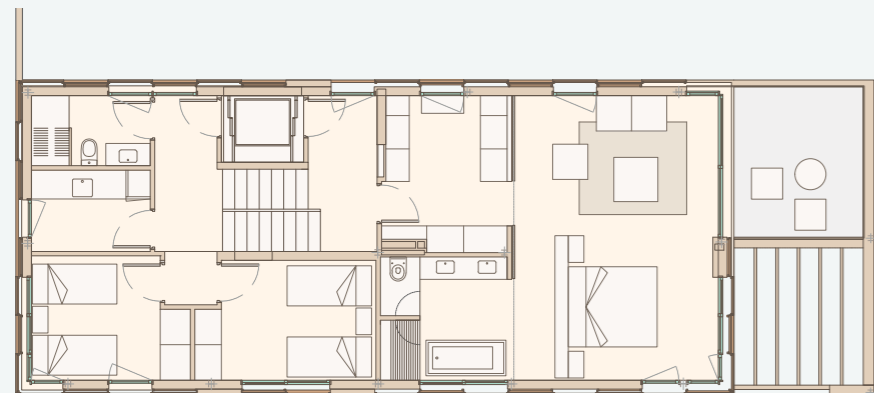
PLANTA -1
FLOOR -1



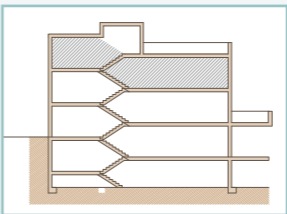
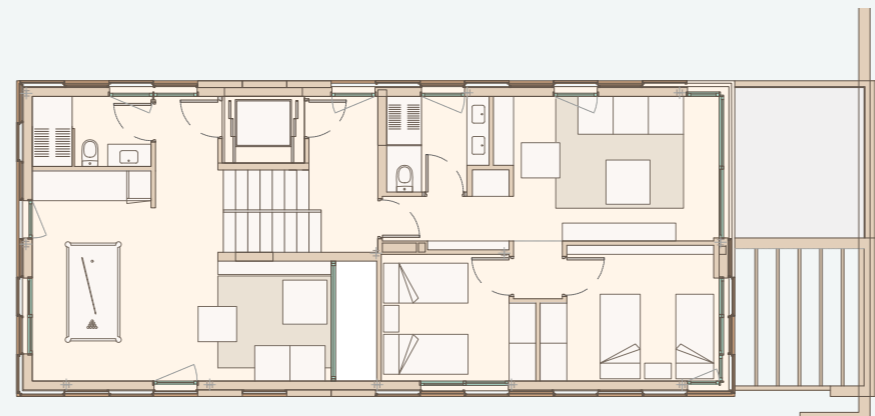
PLANTA BAJA
GROUND FLOOR



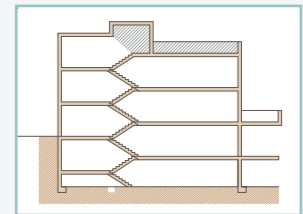
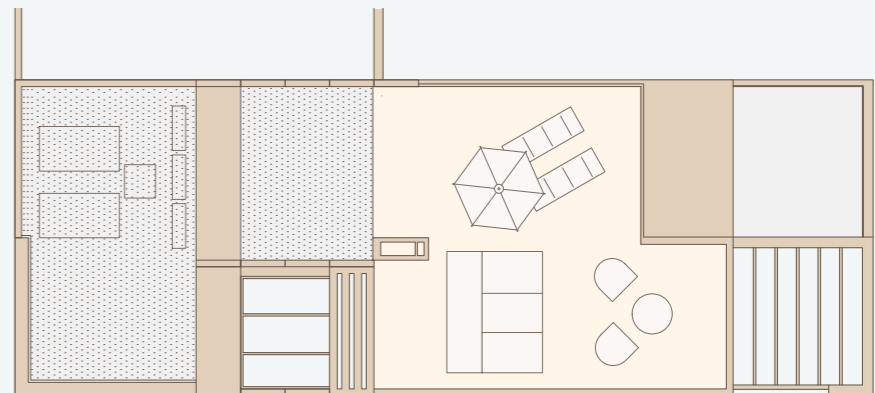
PLANTA 1
FLOOR 1



PLANTA 2
FLOOR 2

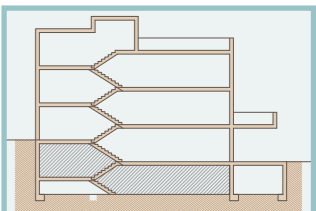
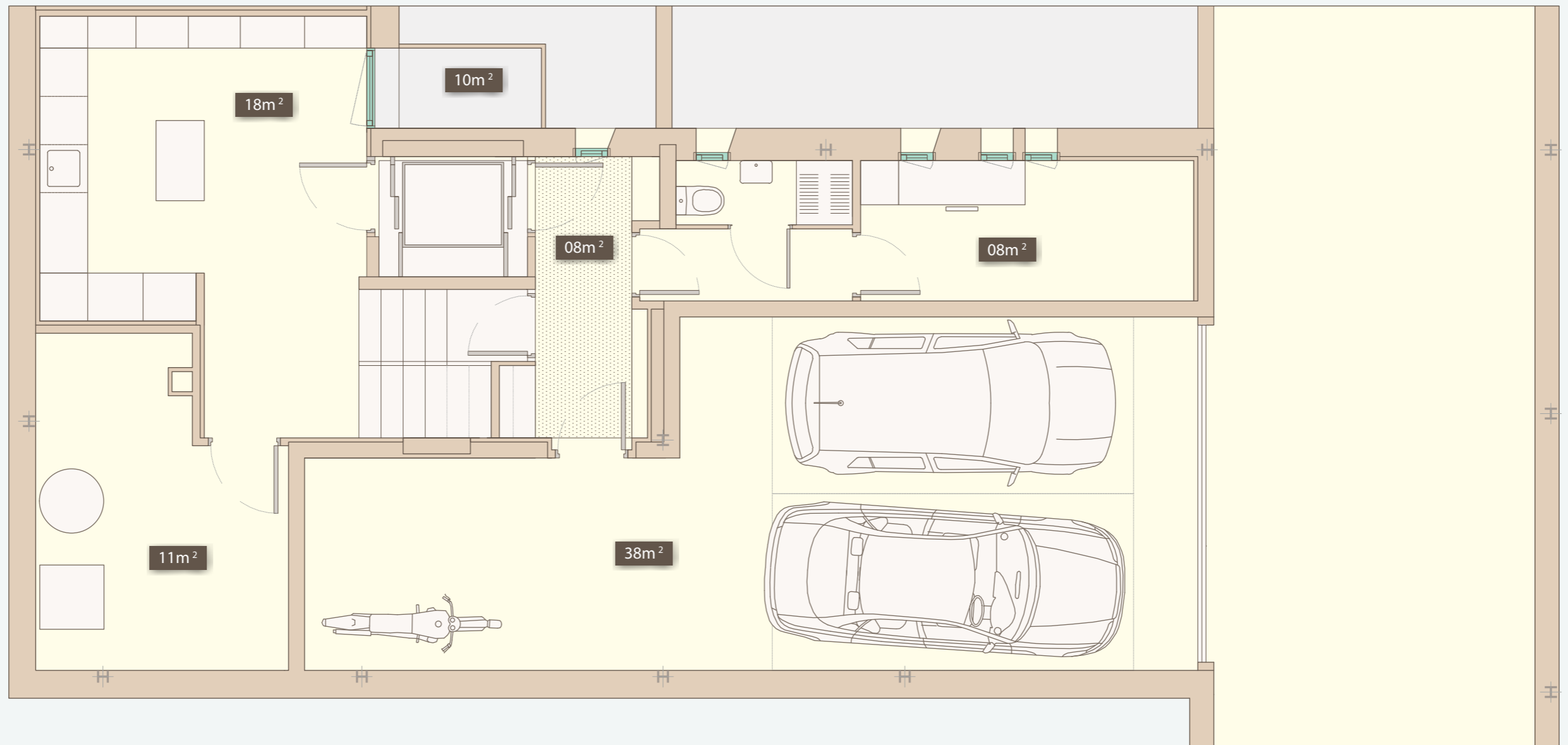


CUBIERTA
ROOFTOP





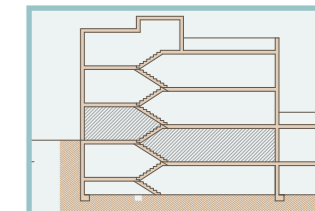
90° FLIPPED



PLANTA BAJA / GROUND FLOOR



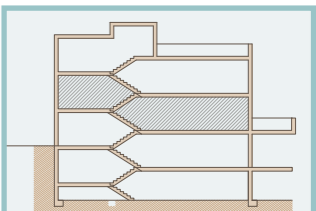
90° FLIPPED



PLANTA 1 / FLOOR 1

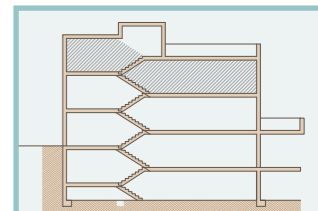
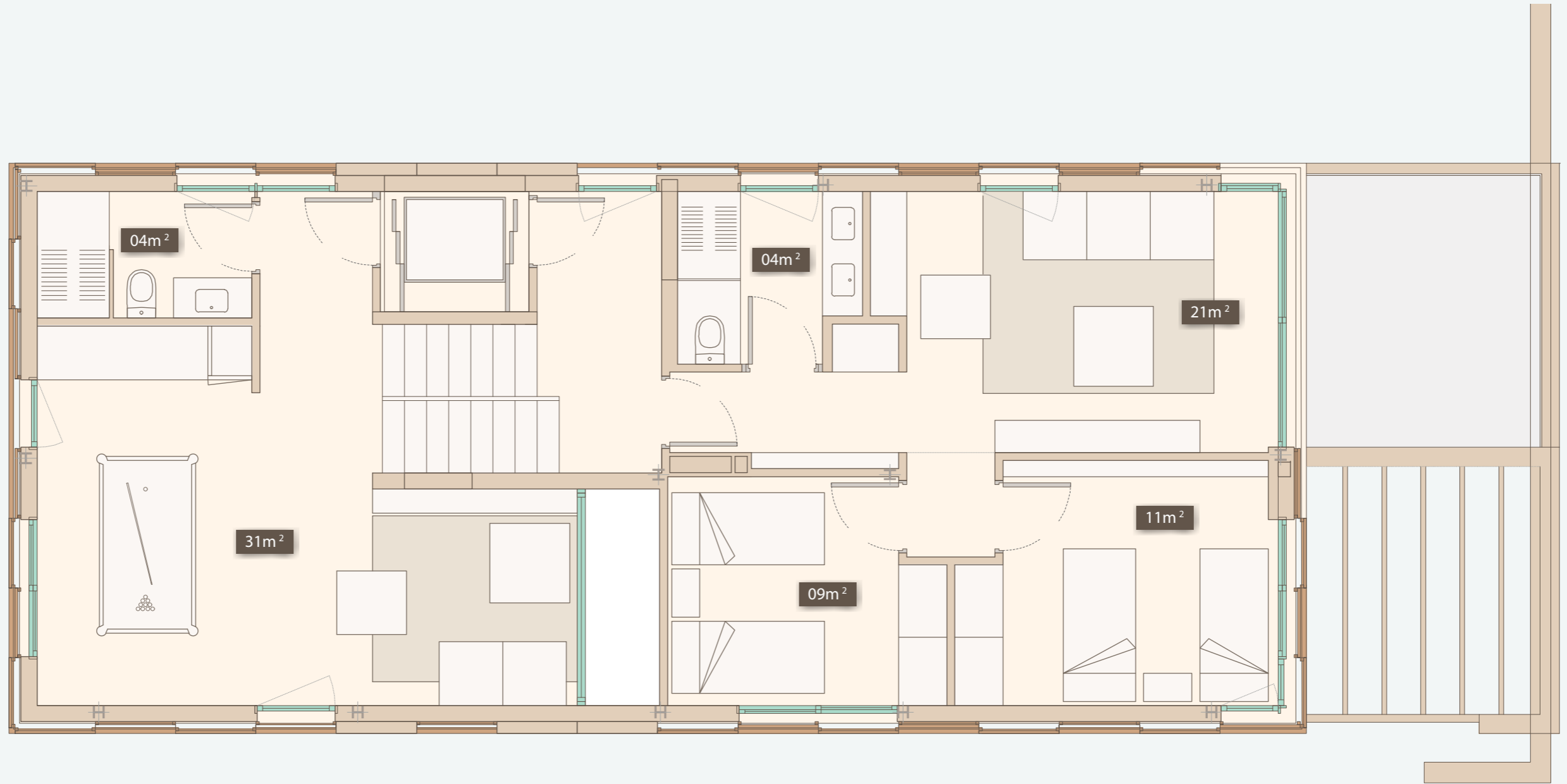


90° FLIPPED





90° FLIPPED



SOLARIUM / SUN DE CK



90° FLIPPED

