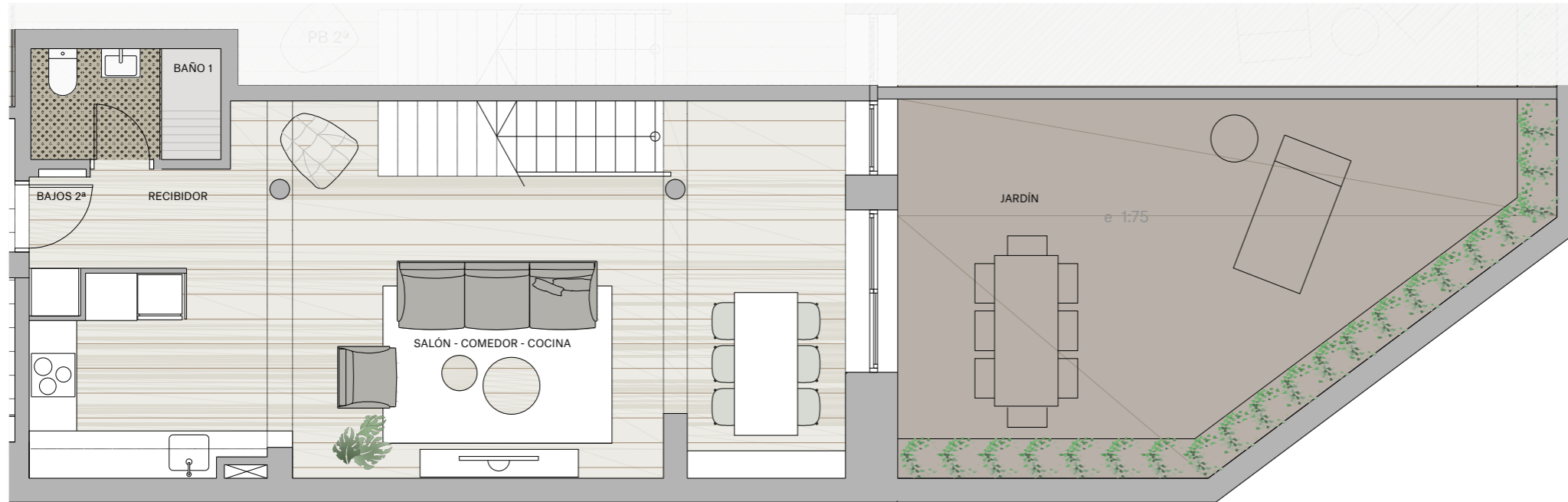
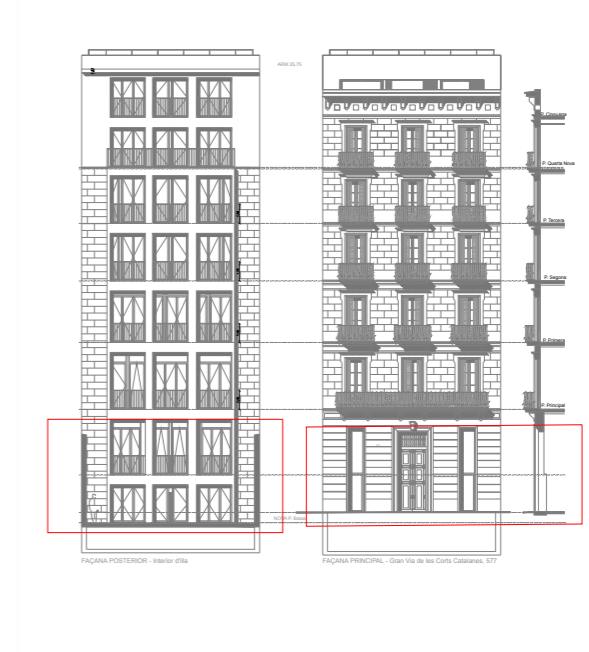
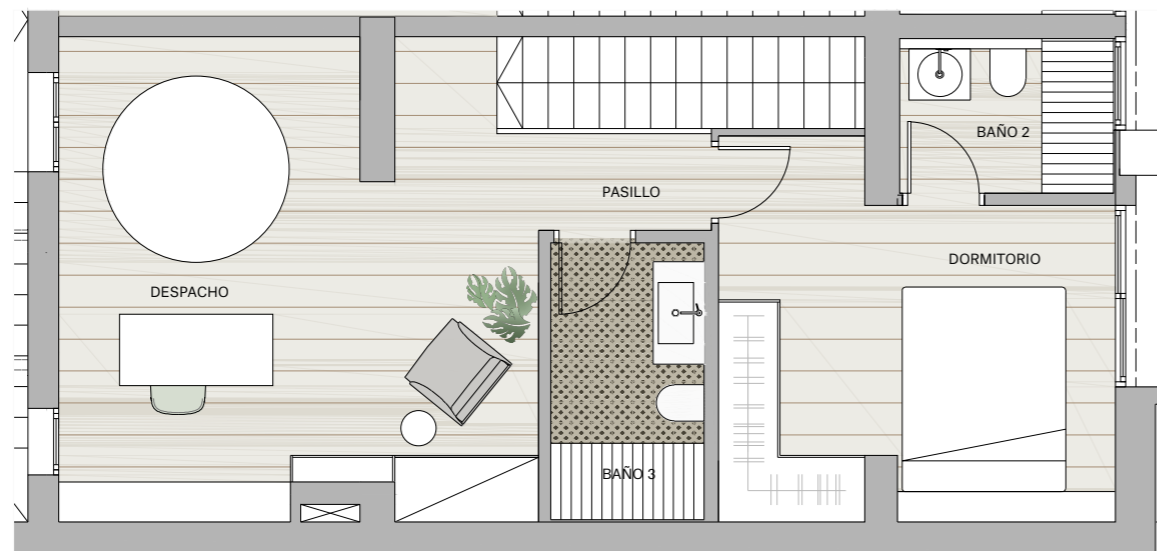


PLANTA BAJA - 2º



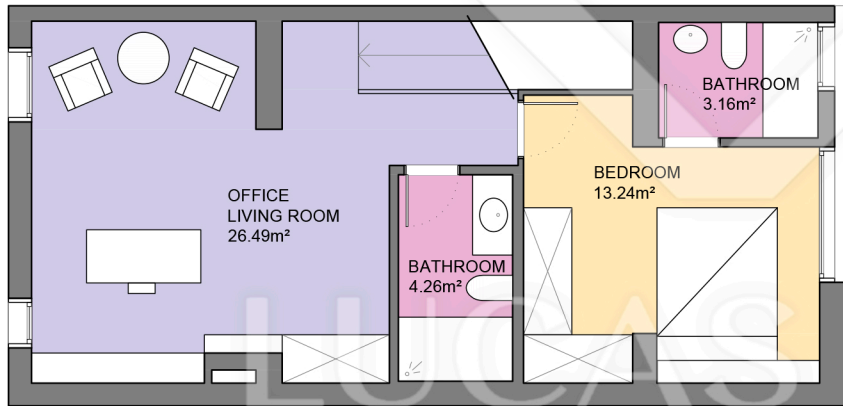
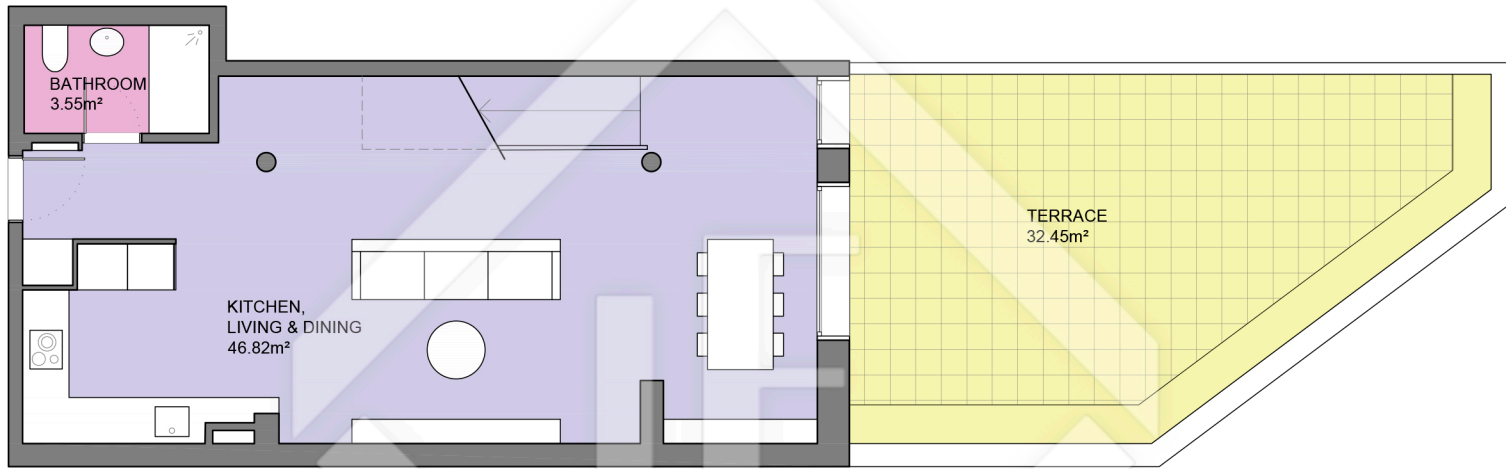
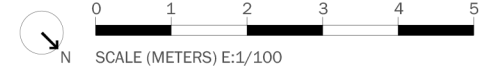
PLANTA BAJA - 2º

SUPERFICIE CONSTRUIDA	117,00
SUPERFICIES ÚTILES	
Salón comedor cocina	44,34
Baño 1	3,55
Recibidor	2,48
TOTAL	50,37
(interior PB)	
Dormitorio	13,24
Despacho	19,27
Baño 2	3,16
Baño 3	4,26
Pasillo	7,22
TOTAL	47,15
(interior attico)	
Jardín posterior	32,45
TOTAL	129,97
(interior + exterior)	



*Todos los planos son orientativos y están en fase de ejecución

BCN47682



Measurements GROUND FLOOR	
Built surface	60.50m ²
Useful surface	50.37m ²
Exterior surface	32.45m ²
Measurements FIRST FLOOR	
Built surface	57.08m ²
Useful surface	47.15m ²
Measurements TOTAL FLOOR	
Built surface	117.58m ²
Useful surface	97.52m ²
Exterior surface	32.45m ²



Scale in metres. Indicative only. Dimensions are approximate. All information contained here is gathered from sources we believe to be reliable. However we cannot guarantee its accuracy and interested persons should rely on their own enquiries.