

BCN37829

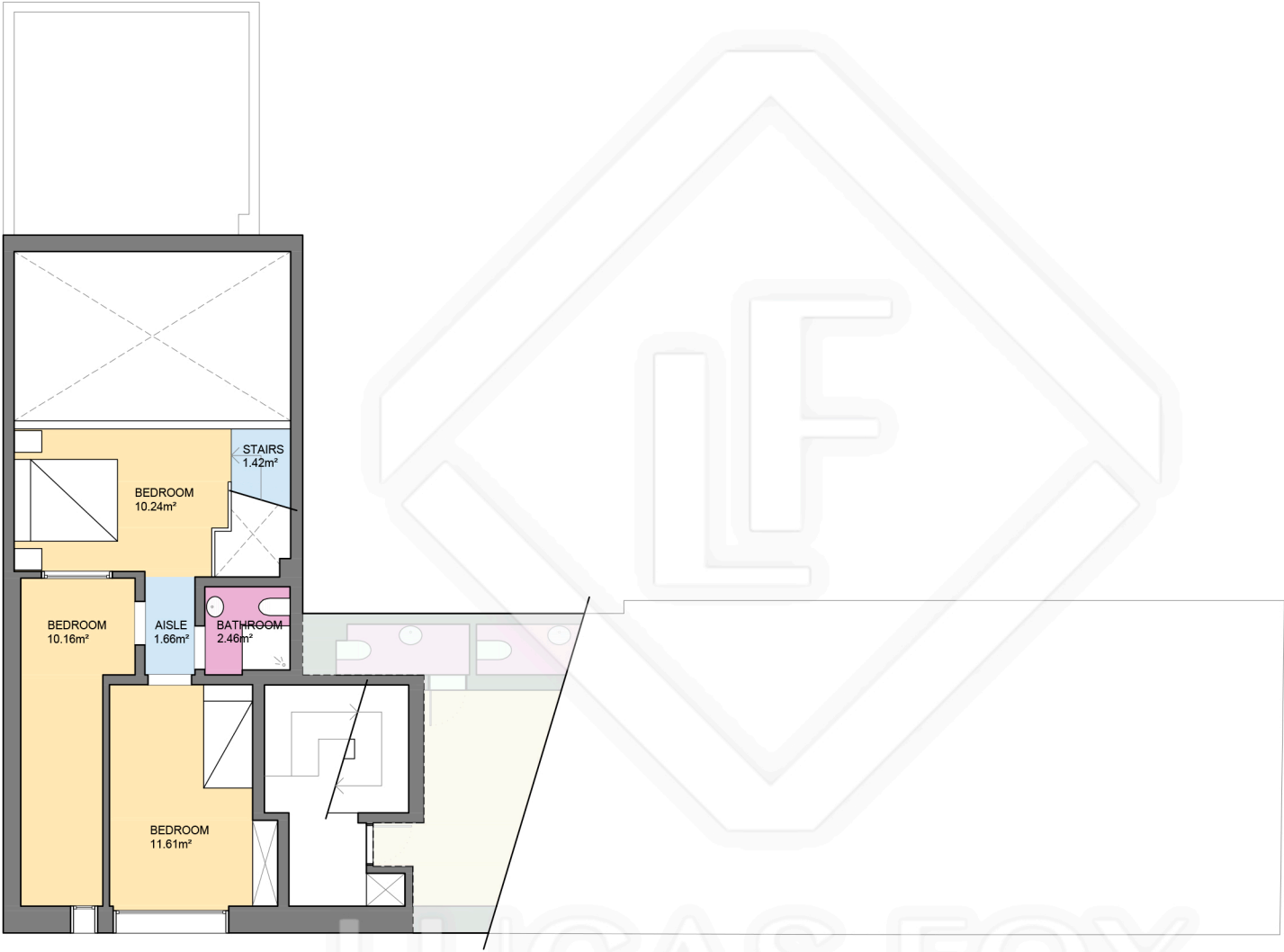


| | |
|---------------------------------|----------|
| Measurements 5B | |
| Built surface | 68.44m² |
| Useful surface | 58.00m² |
| Exterior surface | 18.07m² |
| Measurements 1° | |
| Built surface | 23.65m² |
| Useful surface | 17.90m² |
| Measurements 2° | |
| Built surface | 77.05m² |
| Useful surface | 61.77m² |
| Measurements TOTAL GROUND FLOOR | |
| Built surface | 169.14m² |
| Useful surface | 137.67m² |
| Staircase surface | 10.30m² |
| Exterior surface | 18.07m² |
| Measurements TOTAL BUILDING | |
| Built surface | 398.97m² |
| Useful surface | 327.65m² |
| Staircase surface | 25.38m² |
| Exterior surface | 158.11m² |



Scale in metres. Indicative only. Dimensions are approximate. All information contained here is gathered from sources we believe to be reliable. However we cannot guarantee its accuracy and interested persons should rely on their own enquiries.

BCN37829



5B - Mezzanine floor

| Measurements 5B - Ground floor | |
|-----------------------------------|----------|
| Built surface | 68.44m² |
| Useful surface | 58.00m² |
| Exterior surface | 18.07m² |
| Measurements 5B - MEZZANINE FLOOR | |
| Built surface | 48.90m² |
| Useful surface | 37.54m² |
| Measurements TOTAL 5B | |
| Built surface | 117.34m² |
| Useful surface | 195.67m² |
| Exterior surface | 18.07m² |

| Measurements TOTAL BUILDING | |
|-----------------------------|----------|
| Built surface | 398.97m² |
| Useful surface | 327.65m² |
| Staircase surface | 25.38m² |
| Exterior surface | 158.11m² |



Scale in metres. Indicative only. Dimensions are approximate. All information contained here is gathered from sources we believe to be reliable. However we cannot guarantee its accuracy and interested persons should rely on their own enquiries.

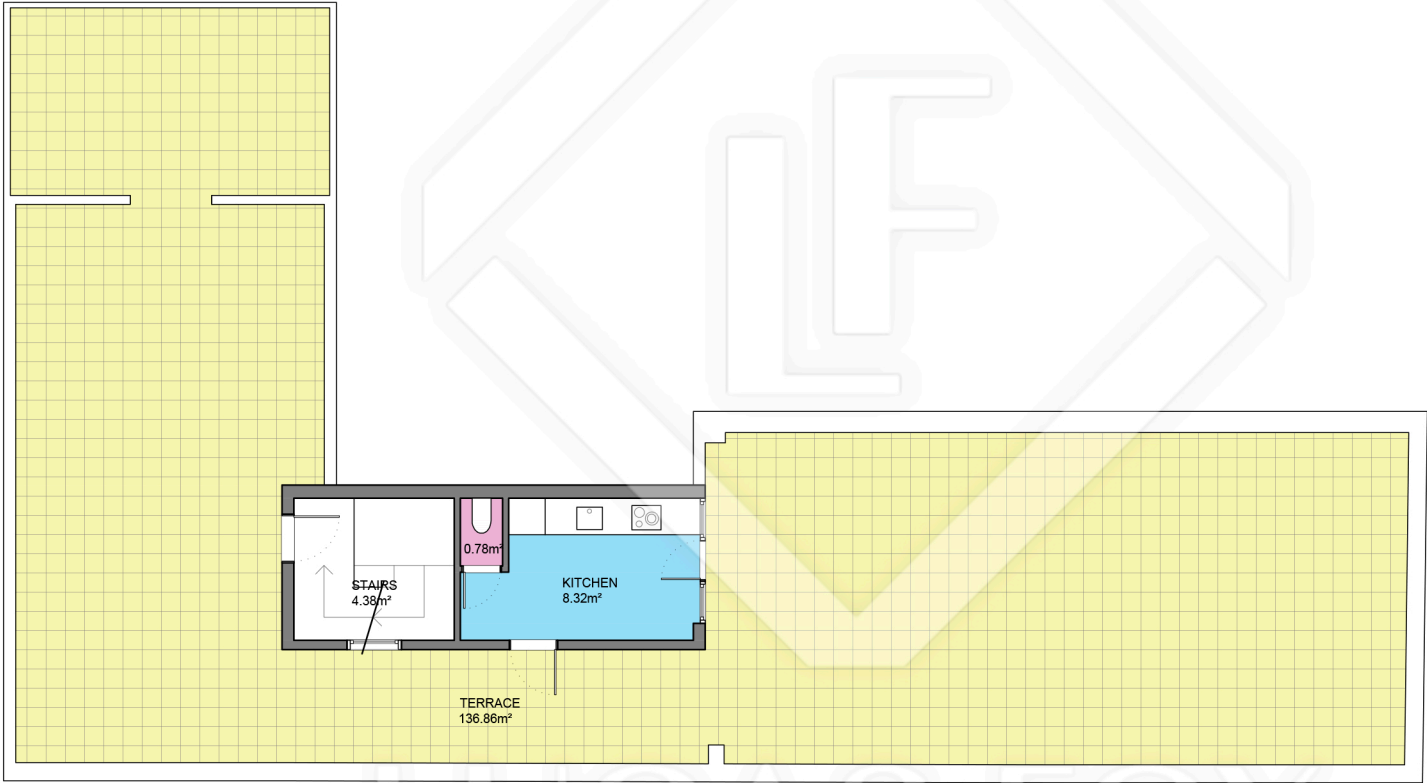
BCN37829



| | |
|--------------------------------|----------|
| Measurements 1° | |
| Built surface | 72.63m² |
| Useful surface | 61.95m² |
| Exterior surface | 1.20m² |
| Measurements 2° | |
| Built surface | 97.15m² |
| Useful surface | 81.39m² |
| Exterior surface | 1.98m² |
| Measurements TOTAL FIRST FLOOR | |
| Built surface | 169.78m² |
| Useful surface | 143.34m² |
| Staircase surface | 7.28m² |
| Exterior surface | 3.18m² |
| Measurements TOTAL BUILDING | |
| Built surface | 398.97m² |
| Useful surface | 327.65m² |
| Staircase surface | 25.38m² |
| Exterior surface | 158.11m² |



Scale in metres. Indicative only. Dimensions are approximate. All information contained here is gathered from sources we believe to be reliable. However we cannot guarantee its accuracy and interested persons should rely on their own enquiries.



| Measurements TOTAL TERRACE FLOOR | |
|----------------------------------|----------|
| Built surface | 11.15m² |
| Useful surface | 9.10m² |
| Staircase surface | 7.80m² |
| Exterior surface | 136.86m² |
| Measurements TOTAL BUILDING | |
| Built surface | 398.97m² |
| Useful surface | 327.65m² |
| Staircase surface | 25.38m² |
| Exterior surface | 158.11m² |