

FINLANDIA APARTMENTS

LUCAS FOX
NEW DEVELOPMENTS



PB - DUPLEX



	m ² CONSTRUIDOS	m ² ÚTILES
COCINA OFFICE (C)	10.14	9.54
SALÓN-COMEDOR (SC)	23.11	21.93
ESCALERA (E1)	3.36	3.08
RECIBIDOR (R)	5.33	4.77
SUITE-VESTIDOR 1 (S1)	12.17	11.09
BAÑO SUITE 1 (B1)	9.95	9.36
M² TOTALES	64.06	59.77



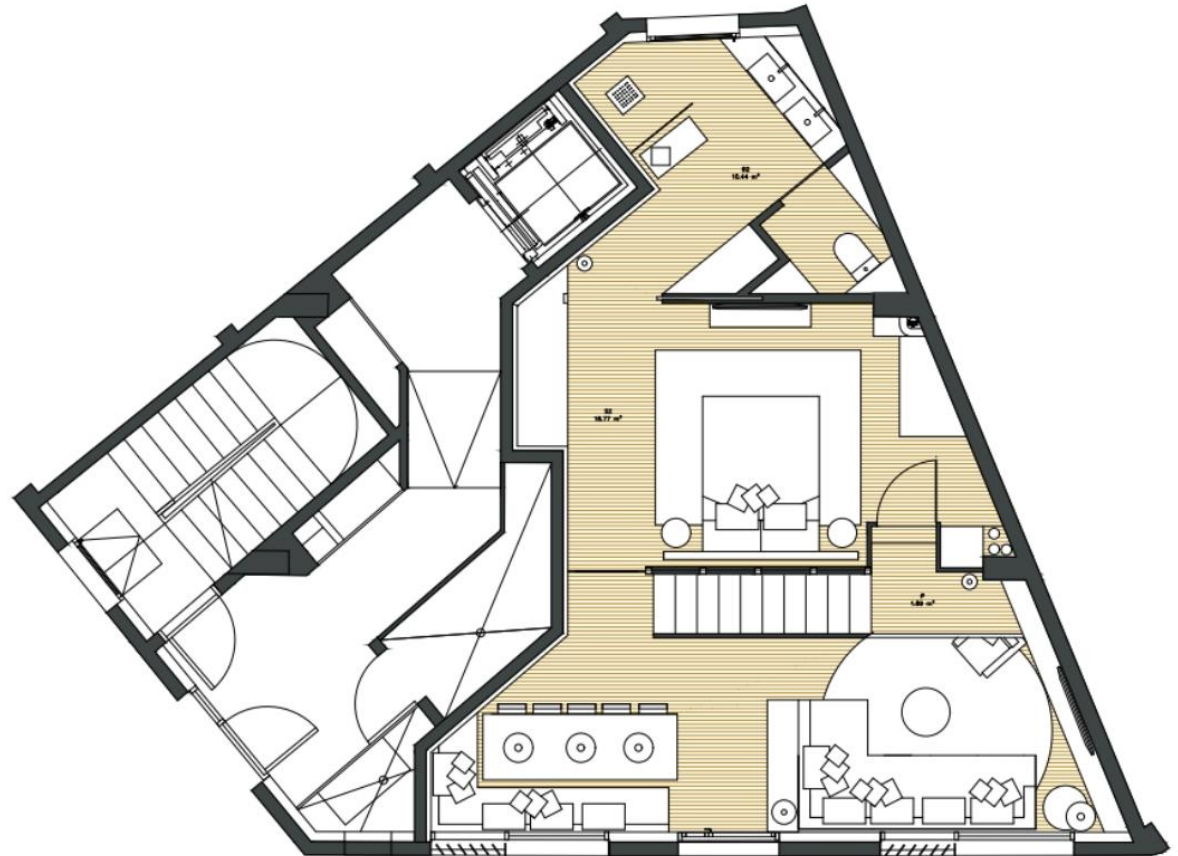
These details have been prepared in good faith but are not intended to constitute part of any offer of contract or create any contractual relationship. No description of information of any kind contained in these particulars may be relied upon as a statement or representation, warranty or fact. All images, plans and specifications shown are indicative only, cannot be guaranteed to represent the complete interiors or exteriors of the property. Any areas, measurements or distances given are approximate only. It is not possible to scale exactly from these drawings. Any buyer must satisfy himself by inspection or otherwise as to the correctness of any information given.

FINLANDIA APARTMENTS

LUCAS FOX
NEW DEVELOPMENTS



PB - DUPLEX



	m ² CONSTRUIDO	m ² ÚTILES
PASILLO (P)	2.00	1.89
SUITE-VESTIDOR 2 (S2)	19.81	18.77
BAÑO SUITE 2 (B2)	11.91	10.44
m² TOTALES	33.72	31.10

These details have been prepared in good faith but are not intended to constitute part of any offer of contract or create any contractual relationship. No description of information of any kind contained in these particulars may be relied upon as a statement or representation, warranty or fact. All images, plans and specifications shown are indicative only, cannot be guaranteed to represent the complete interiors or exteriors of the property. Any areas, measurements or distances given are approximate only. It is not possible to scale exactly from these drawings. Any buyer must satisfy himself by inspection or otherwise as to the correctness of any information given.