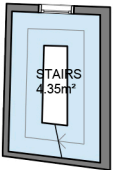


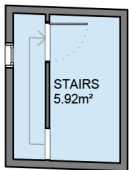
TOWER FLOOR



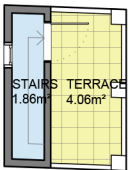
+1 & +2 floor



+3 floor



+4 floor



+5 floor

Measurements TOWER FLOOR	
Built surface	27.16m²
Useful surface	18.79m²
Exterior surface	4.06m²
Measurements MAIN FLOOR	
Built surface	276.43m²
Useful surface	227.97m²
Exterior surface	13.14m²
Height	4.00m
Measurements TOTAL FLOOR	
Built surface	303.59m²
Useful surface	246.76m²
Exterior surface	17.20m²