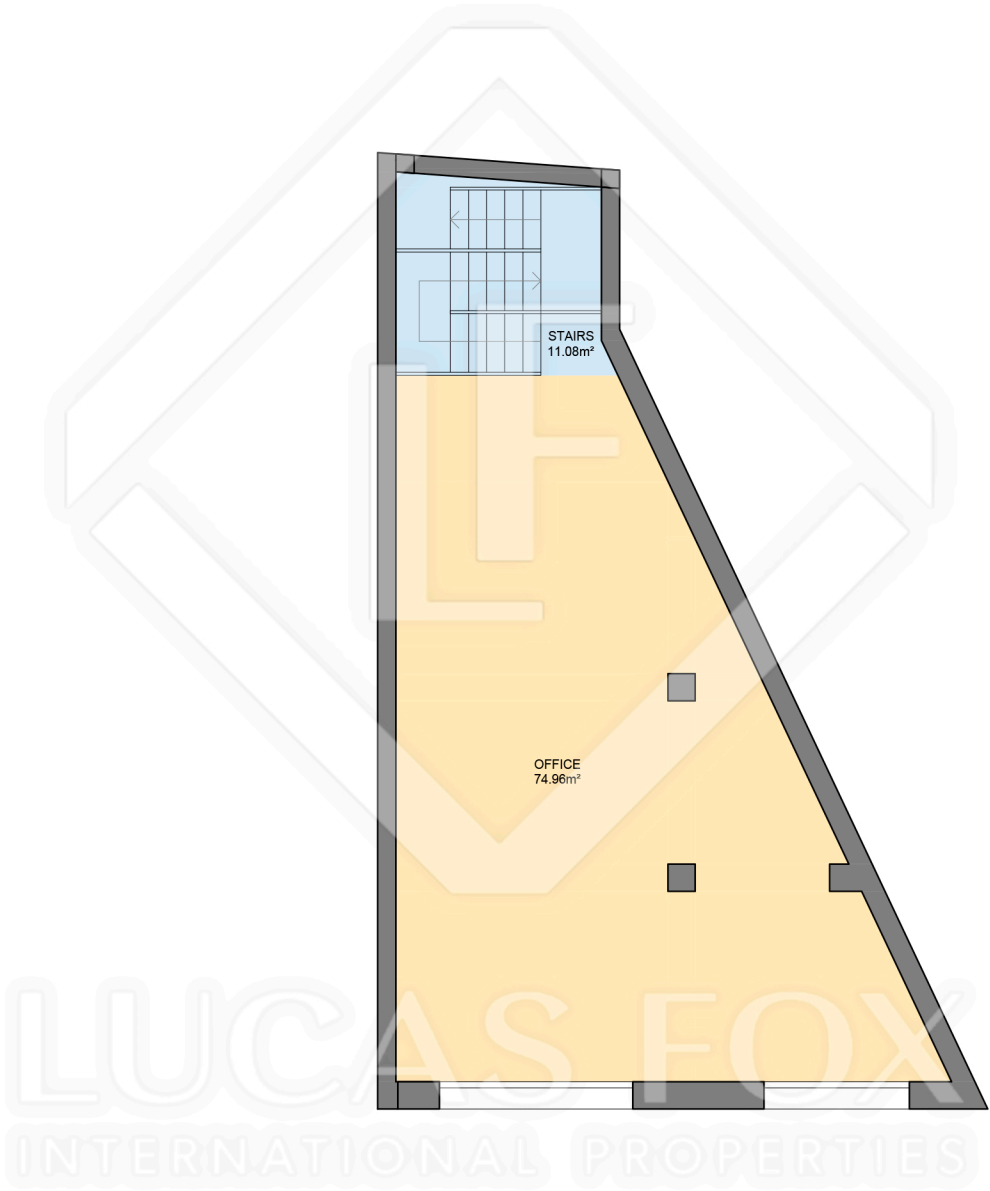


BCN33615

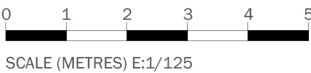


Measurements BASEMENT FLOOR	
Built surface	101.86m <sup>2</sup>
Useful surface	86.04m <sup>2</sup>
Measurements TOTAL FLOOR	
Built surface	572.10m <sup>2</sup>
Built surface (% porch)	602.96m <sup>2</sup>
Useful surface	481.22m <sup>2</sup>
Terrace surface	372.52m <sup>2</sup>
Terrain surface	736.00m <sup>2</sup>



Scale in metres. Indicative only. Dimensions are approximate. All information contained here is gathered from sources we believe to be reliable. However we cannot guarantee its accuracy and interested persons should rely on their own enquiries.

BCN33615

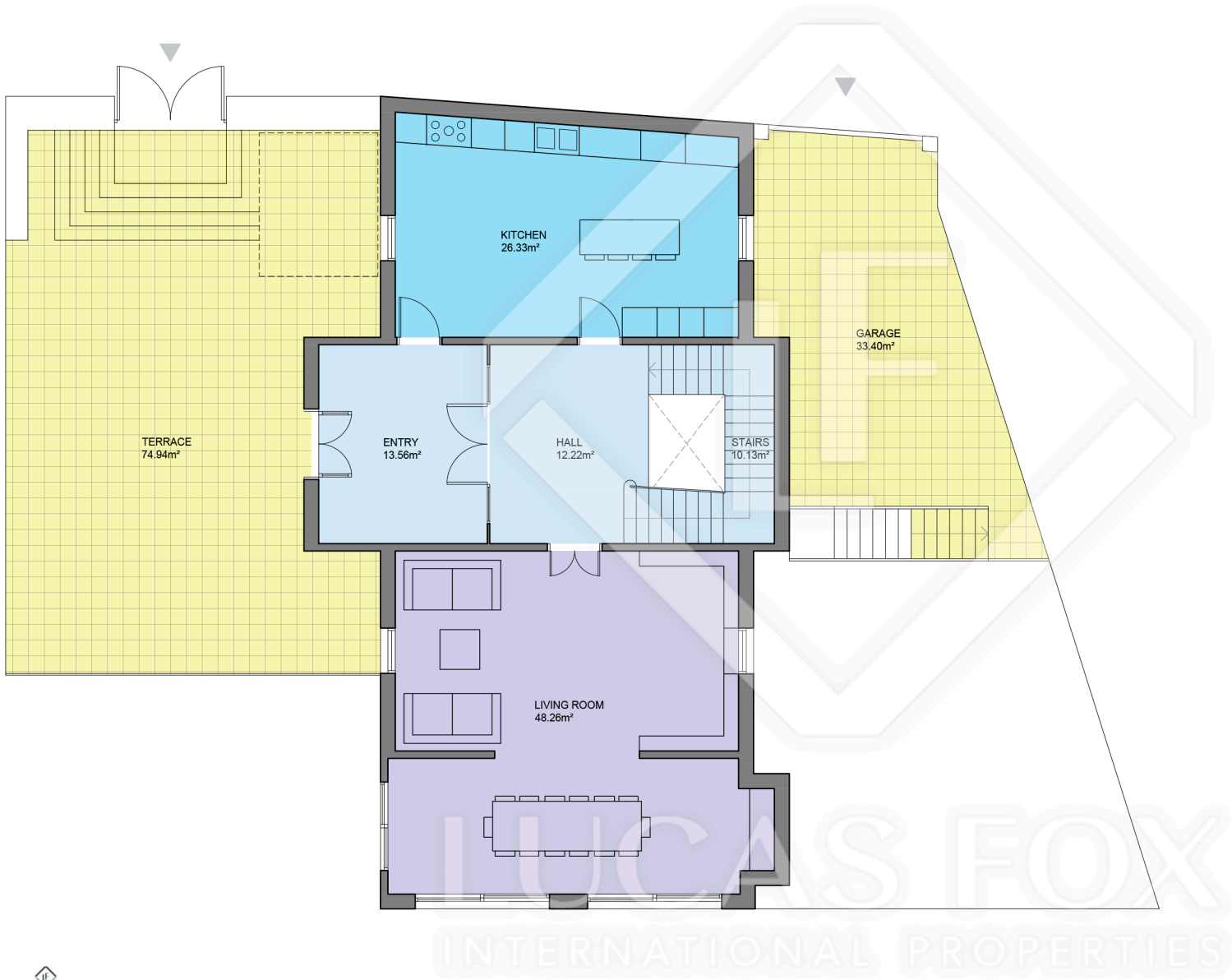
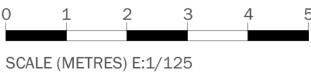


Measurements SEMI BASEMENT FLOOR	
Built surface	174.82m²
Useful surface	144.89m²
Terrace surface	89.41m²
Measurements TOTAL FLOOR	
Built surface	572.10m²
Built surface (% porch)	602.96m²
Useful surface	481.22m²
Terrace surface	372.52m²
Terrain surface	736.00m²



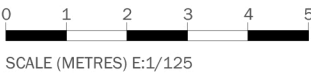
Scale in metres. Indicative only. Dimensions are approximate. All information contained here is gathered from sources we believe to be reliable. However we cannot guarantee its accuracy and interested persons should rely on their own enquiries.

BCN33615



Measurements GROUND FLOOR	
Built surface	131.95m²
Useful surface	110.50m²
Terrace surface	108.33m²
Measurements TOTAL FLOOR	
Built surface	572.10m²
Built surface (% porch)	602.96m²
Useful surface	481.22m²
Terrace surface	372.52m²
Terrain surface	736.00m²

BCN33615

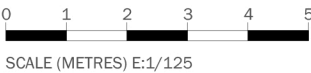


Measurements FIRST FLOOR	
Built surface	107.07m²
Useful surface	92.94m²
Terrace surface	26.12m²
Measurements TOTAL FLOOR	
Built surface	572.10m²
Built surface (% porch)	602.96m²
Useful surface	481.22m²
Terrace surface	372.52m²
Terrain surface	736.00m²



Scale in metres. Indicative only. Dimensions are approximate. All information contained here is gathered from sources we believe to be reliable. However we cannot guarantee its accuracy and interested persons should rely on their own enquiries.

BCN33615



Turret floor

Measurements SECOND FLOOR	
Built surface	41.97m²
Useful surface	34.61m²
Terrace surface	63.62m²
Measurements TURRET FLOOR	
Built surface	14.43m²
Useful surface	12.24m²
Terrace surface	00.00m²
Measurements TOTAL FLOOR	
Built surface	572.10m²
Built surface (% porch)	602.96m²
Useful surface	481.22m²
Terrace surface	372.52m²
Terrain surface	736.00m²



Scale in metres. Indicative only. Dimensions are approximate. All information contained here is gathered from sources we believe to be reliable. However we cannot guarantee its accuracy and interested persons should rely on their own enquiries.