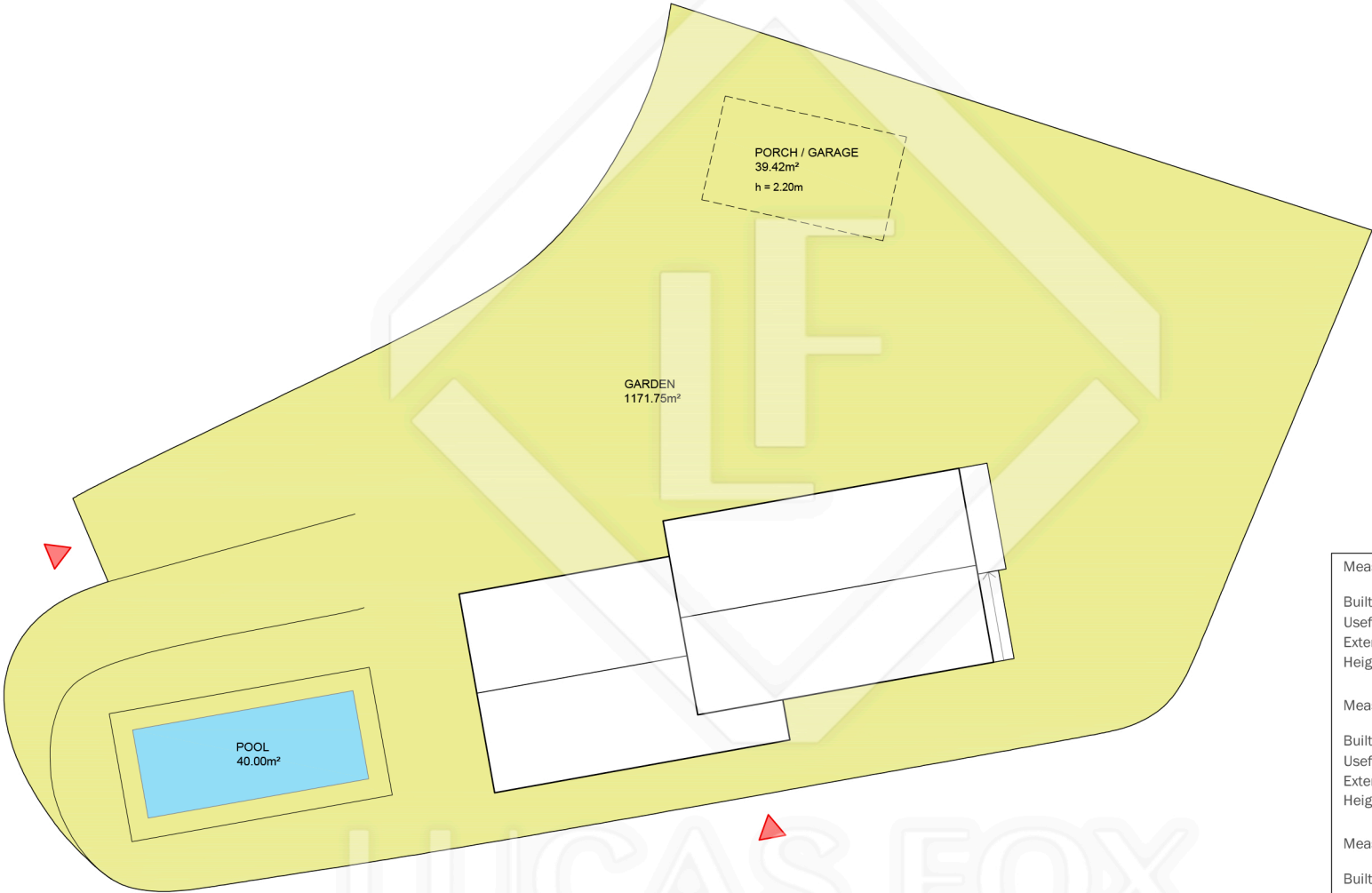
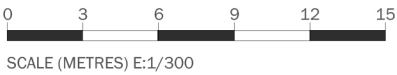
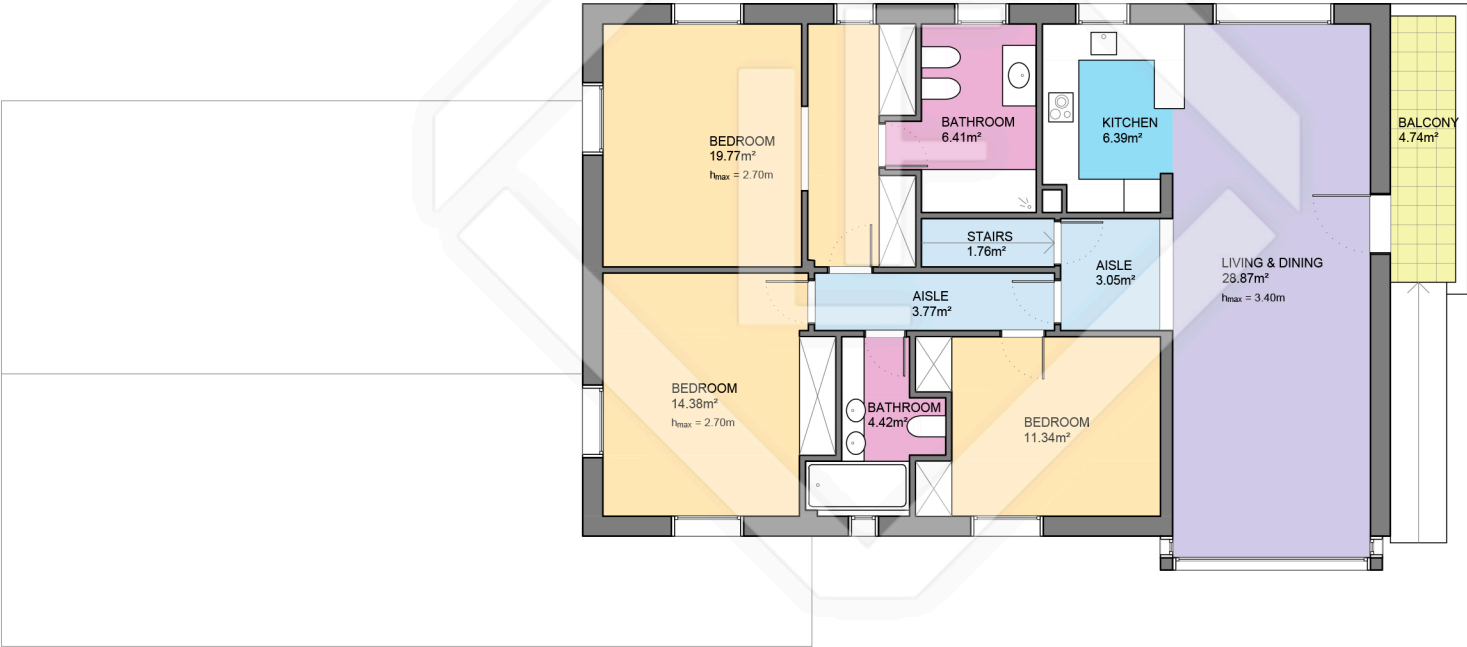


BCN32085



Measurements FIRST FLOOR	
Built surface	119.53m ²
Useful surface	100.17m ²
Exterior surface	4.74m ²
Height	2.35m
Measurements GROUND FLOOR	
Built surface	170.46m ²
Useful surface	143.77m ²
Exterior surface	1243.93m ²
Height	2.50m
Measurements SEMI-BASEMENT FLOOR	
Built surface	153.90m ²
Useful surface	118.88m ²
Height	2.22m
Measurements TOTAL FLOOR	
Built surface	443.89m ²
Useful surface	362.82m ²
Exterior surface	1248.67m ²
Terrain surface	1442.00m ²

BCN32085



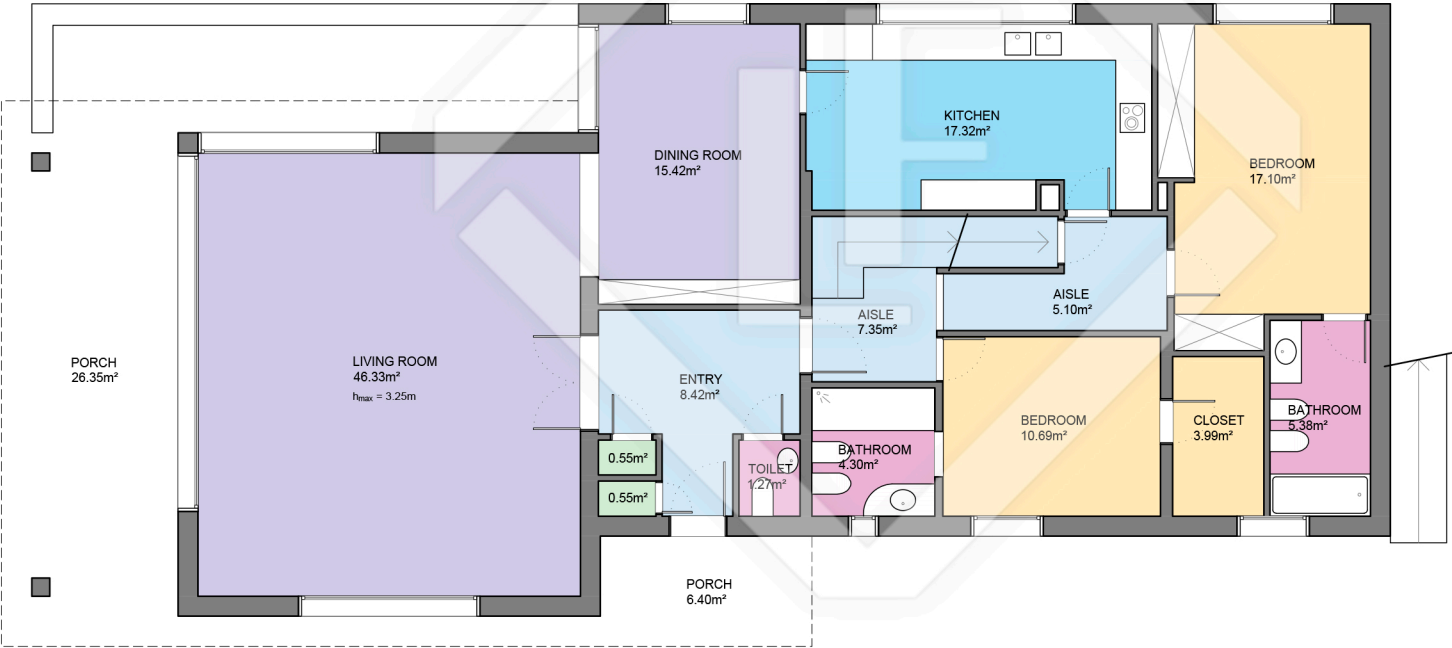
LUCAS FOX
INTERNATIONAL PROPERTIES

Measurements FIRST FLOOR	
Built surface	119.53m ²
Useful surface	100.17m ²
Exterior surface	4.74m ²
Height	2.35m
Measurements TOTAL FLOOR	
Built surface	443.89m ²
Useful surface	362.82m ²
Exterior surface	1248.67m ²
Terrain surface	1442.00m ²



Scale in metres. Indicative only. Dimensions are approximate. All information contained here is gathered from sources we believe to be reliable. However we cannot guarantee its accuracy and interested persons should rely on their own enquiries.

BCN32085



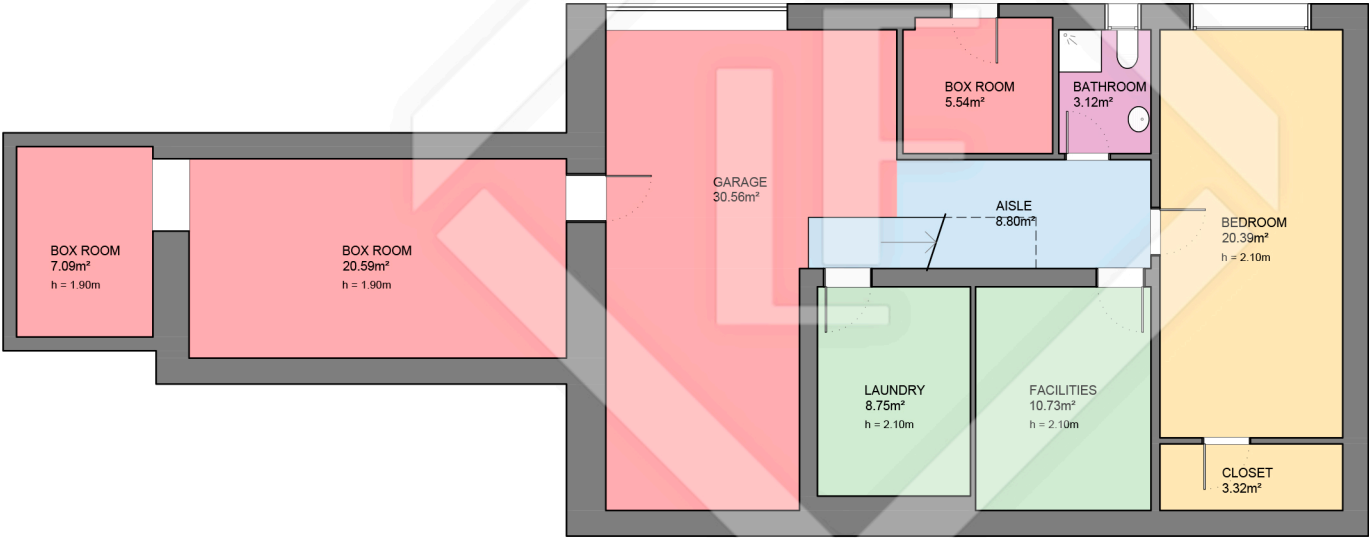
LUCAS FOX
INTERNATIONAL PROPERTIES

Measurements GROUND FLOOR	
Built surface	170.46m ²
Useful surface	143.77m ²
Exterior surface	1243.93m ²
Height	2.50m
Measurements TOTAL FLOOR	
Built surface	443.89m ²
Useful surface	362.82m ²
Exterior surface	1248.67m ²
Terrain surface	1442.00m ²



Scale in metres. Indicative only. Dimensions are approximate. All information contained here is gathered from sources we believe to be reliable. However we cannot guarantee its accuracy and interested persons should rely on their own enquiries.

BCN32085



LUCAS FOX
INTERNATIONAL PROPERTIES



Scale in metres. Indicative only. Dimensions are approximate. All information contained here is gathered from sources we believe to be reliable. However we cannot guarantee its accuracy and interested persons should rely on their own enquiries.

Measurements SEMI-BASEMENT FLOOR	
Built surface	153.90m ²
Useful surface	118.88m ²
Height	2.22m
Measurements TOTAL FLOOR	
Built surface	443.89m ²
Useful surface	362.82m ²
Exterior surface	1248.67m ²
Terrain surface	1442.00m ²